





Organza

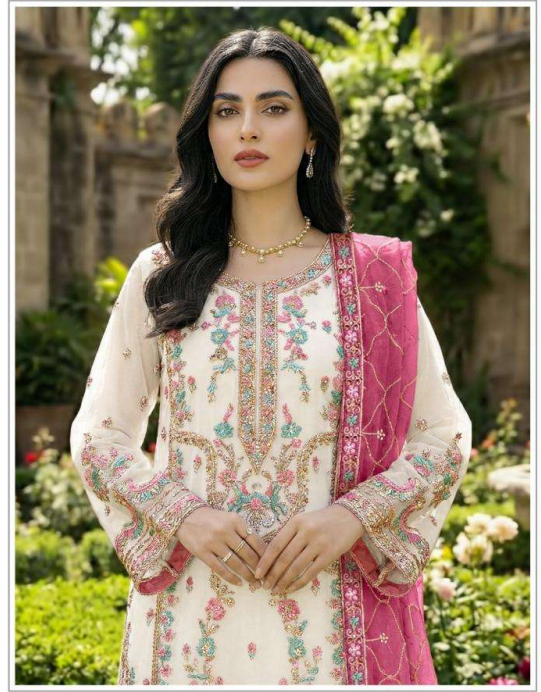
SF-5547-C

TOP:- ORGANZA EMBROIDERED
WITH HEAVY ZARKAN

DUPATTA:- ORGANZA EMBROIDERED
BOTTOM / INNER:- SANTOON

DO NOT USE ANY BLEACH OR RTAN REMOVING CHEMICAL 
IRON THE FABRIC AT MODERATE TEMPERATURE 

DISCLAIMER:
COLORS MIGHT APPEAR SLIGHTLY DIFFERENT DUE TO
PHOTOGRAPHIC/LIGHTING EQUIPMENT USED
SOME ACCESSORIES/EMBELLISHMENTS USED ARE ONLY FOR
SHOOT PURPOSES AND NOT PART OF THE ACTUAL SUIT



Organza

SF-5547

TOP:- ORGANZA EMBROIDERED
WITH HEAVY ZARKAN
DUPATTA:- ORGANZA EMBROIDERED
BOTTOM / INNER:- SANTOON

DO NOT USE ANY BLEACH OR RTAN REMOVING CHEMICAL 
IRON THE FABRIC AT MODERATE TEMPERATURE 

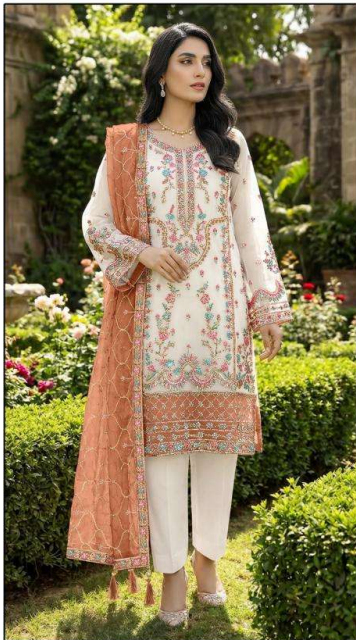
DISCLAIMER:
COLORS MIGHT APPEAR SLIGHTLY DIFFERENT DUE TO
PHOTOGRAPHIC/LIGHTING EQUIPMENT USED
SOME ACCESSORIES/EMBELLISHMENTS USED ARE ONLY FOR
SHOOT PURPOSES AND NOT PART OF THE ACTUAL SUIT



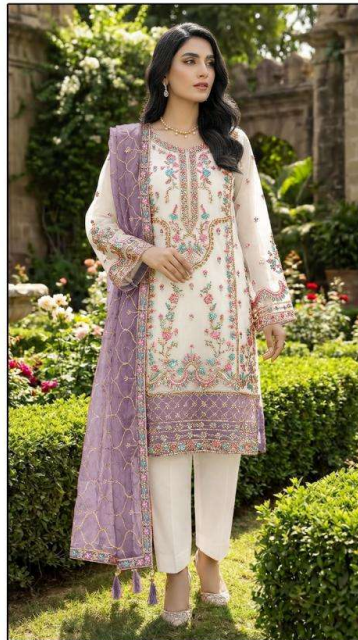
SF-5547



SF-5547-B



SF-5547-C

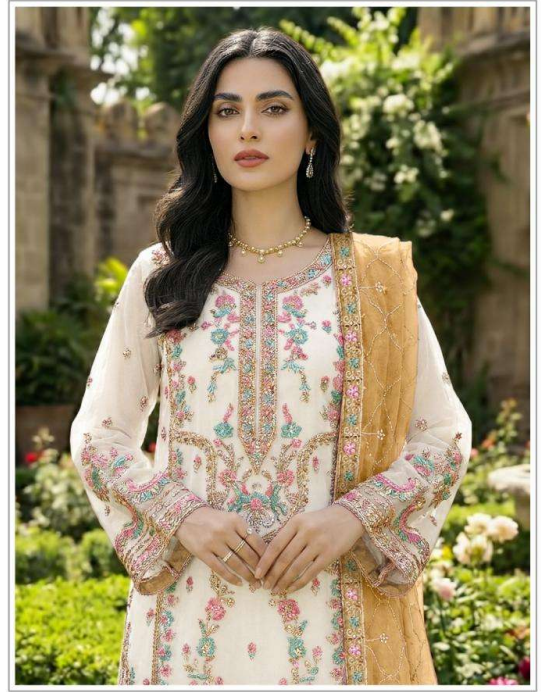


SF-5547-D

Organza



TOP:- ORGANZA EMBROIDERED
WITH HEAVY ZARKAN
DUPATTA:- ORGANZA EMBROIDERED
BOTTOM / INNER:- SANTOON



Organza

SF-5547-C

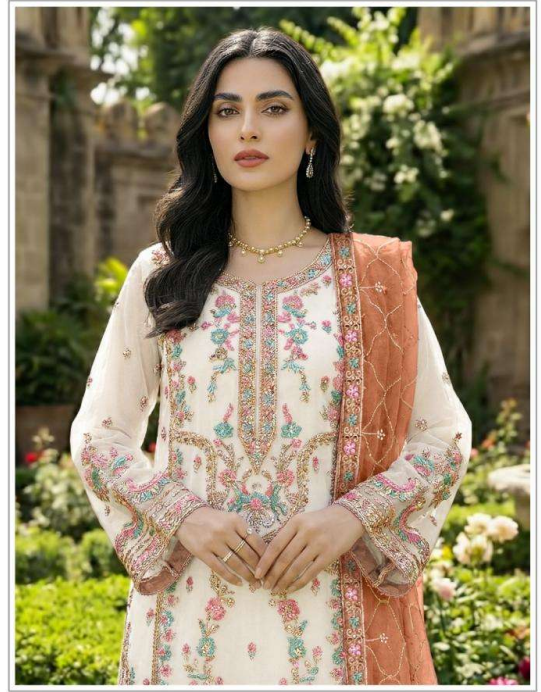
TOP:- ORGANZA EMBROIDERED
WITH HEAVY ZARKAN

DUPATTA:- ORGANZA EMBROIDERED

BOTTOM / INNER:- SANTOON

DO NOT USE ANY BLEACH OR RTAN REMOVING CHEMICAL 
IRON THE FABRIC AT MODERATE TEMPERATURE 

DISCLAIMER:
COLORS MIGHT APPEAR SLIGHTLY DIFFERENT DUE TO
PHOTOGRAPHIC/LIGHTING EQUIPMENT USED
SOME ACCESSORIES/EMBELLISHMENTS USED ARE ONLY FOR
SHOOT PURPOSES AND NOT PART OF THE ACTUAL SUIT



Organza

SF-5547-C

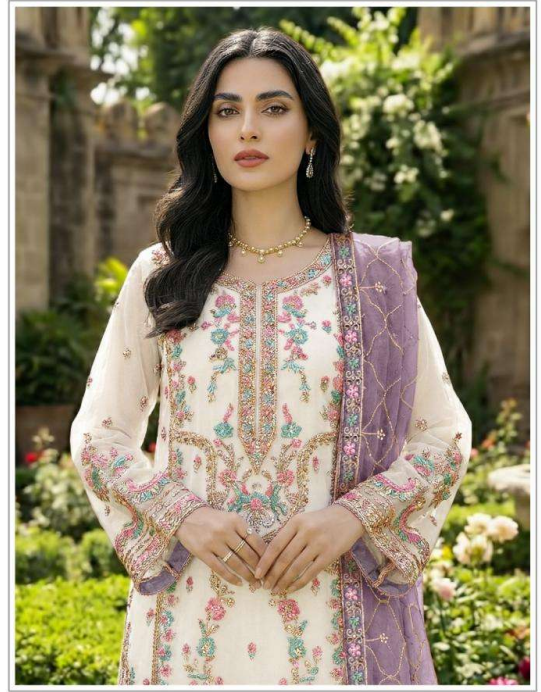
TOP:- ORGANZA EMBROIDERED
WITH HEAVY ZARKAN

DUPATTA:- ORGANZA EMBROIDERED

BOTTOM / INNER:- SANTOON

DO NOT USE ANY BLEACH OR RTAN REMOVING CHEMICAL 
IRON THE FABRIC AT MODERATE TEMPERATURE 

DISCLAIMER:
COLORS MIGHT APPEAR SLIGHTLY DIFFERENT DUE TO
PHOTOGRAPHIC/LIGHTING EQUIPMENT USED
SOME ACCESSORIES/EMBELLISHMENTS USED ARE ONLY FOR
SHOOT PURPOSES AND NOT PART OF THE ACTUAL SUIT



Organza

SF-5547-D

TOP:- ORGANZA EMBROIDERED
WITH HEAVY ZARKAN
DUPATTA:- ORGANZA EMBROIDERED
BOTTOM / INNER:- SANTOON

DO NOT USE ANY BLEACH OR RTAN REMOVING CHEMICAL 
IRON THE FABRIC AT MODERATE TEMPERATURE 

DISCLAIMER:
COLORS MIGHT APPEAR SLIGHTLY DIFFERENT DUE TO
PHOTOGRAPHIC/LIGHTING EQUIPMENT USED
SOME ACCESSORIES/EMBELLISHMENTS USED ARE ONLY FOR
SHOOT PURPOSES AND NOT PART OF THE ACTUAL SUIT