


RajpathTM
The Way Of Style

Airaavat Patola



Rajpath™
The Way to Style
Patola Silk

Stay in Style

COLOURFUL BRIGHT AND AWASH
IN SPLENDOR UNMATCHED
THESE DRESSES DO YOUR CHARM
JUSTICE LIKE NONE OTHER
FILL THE WORLD AROUND YOU
WITH BRIGHTNESS UNBOUND.





Rajpath™
The Way Of Style
Patola Silk
507

THE CLASSIC SOUTH INDIAN STRIPES ARE GIVEN A MAGIC TOUCH WITH A DASH OF CONTEMPORARINESS WEAR IN ON AN EVENING AFFAIR WITH ALAN TWIRLED YOUR FINGERTIPS.





Raj path™
The Way Of Style
Patola Silk



MUTED GLOD FLAMES ADLAZE AGAINST THE PEARL WHITE BACKGROUND LOOK AS DIVINE AS
A MORNING PRAYER EMBRACE THE BEAUTY OF PURITY.



Rajpath™
Patola Silk
509



Walk the talk

THIS SEASON YOUR LOOK GETS BETTER DEFINITION
WITH JUST A LITTLE ATTENTION TO DETAIL.



Rajpath™
the way it's done
Patola Silk
504





Rajpath™
Patola Silk



Classical Symphony

THE CLASSIC COLOUR COMBINATION STRATEGICALLY DESIGNED WITH AN INTRINSIC WEAVE OF KALAMKARI PRINT GIVES A CONTEMPORARY EDGE TO THIS PIECE. AN IDEAL PIECE FOR EVENING AFFAIRS.



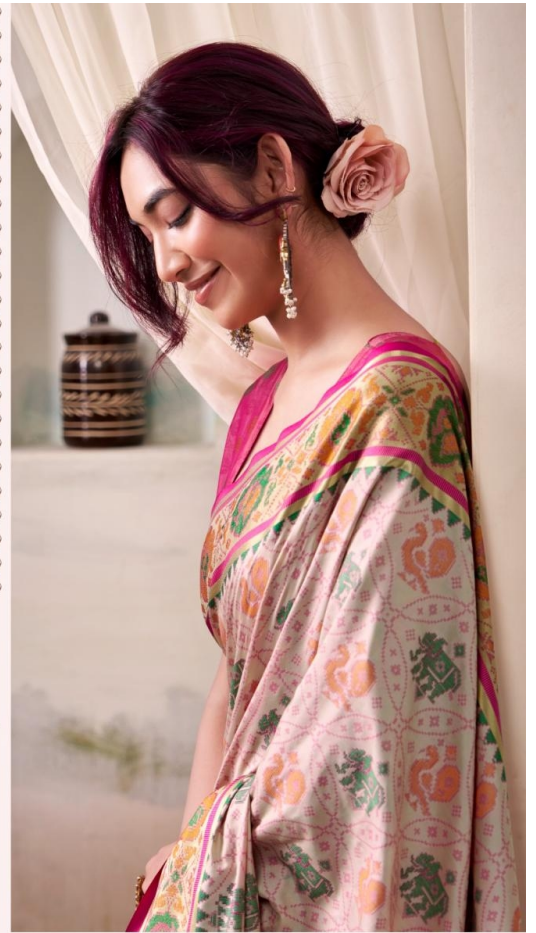




Rajpath™
Patola Silk
505

Pure Fiesta

MUTED GLOID FLAMES ADLAZE AGAINST
THE PEARL WHITE BACKGROUND LOOK
AS DIVINE AS A MORNING PRAYER.
EMBRACE THE BEAUTY OF PURITY.



Rajpath™
The Way of Style
Patola Silk



MUTED GLOD FLAMES ALLAZE AGAINST THE PEARL WHITE BACKGROUND LOOK AS DIVINE AS
A MORNING PRAYER. EMBRACE THE BEAUTY OF PURITY.





Rajpath™
The Way Of Style
Patola Silk

It's a class

FASHION AND STYLE ALWAYS DEPEND ON GOOD
COLOR AND FANTASTIC COMBINATION OF SHADS,
BUT AS PER OPINION EVERY COLOR SAYS YOUR
MOOD AND REFLECTS YOUR PERSONALITY.
SO WE CREATE ALL THE SHADS FOR ENHANCE
YOUR BEAUTY.




RajpathTM
The Way Of Style

Airaavat Patola



Rajpath™
The way of life
Patola Silk

Walk the talk
THIS REASON YOUR LOOK GETS BETTER DEFINITION
WITH JUST A LITTLE ATTENTION TO DETAIL