



*Heer*

BY KIMORA

TULIP

COLLECTION AVAILABLE

*Heer*  
BY KIMORA

TULIP



9621



9622



9623



9624



9625



9626



*Heer*

BY KIMORA

TULIP

COLLECTION AVAILABLE

A woman with dark hair pulled back, wearing a purple dress with large orange and blue floral prints and gold jewelry. The background is a soft, textured pink.

*Heer*

BY KIMORA

TULIP

COLLECTION AVAILABLE



HEER  
BY KIMORA

SARTORIAL ELEGANCE

TULIP



*Heer*  
BY KIMORA

CASUAL ELEGANCE  
9622





TIMELESS CHARM  
9624



Heer

BY KIMORA

TIMELESS CHARM

9624





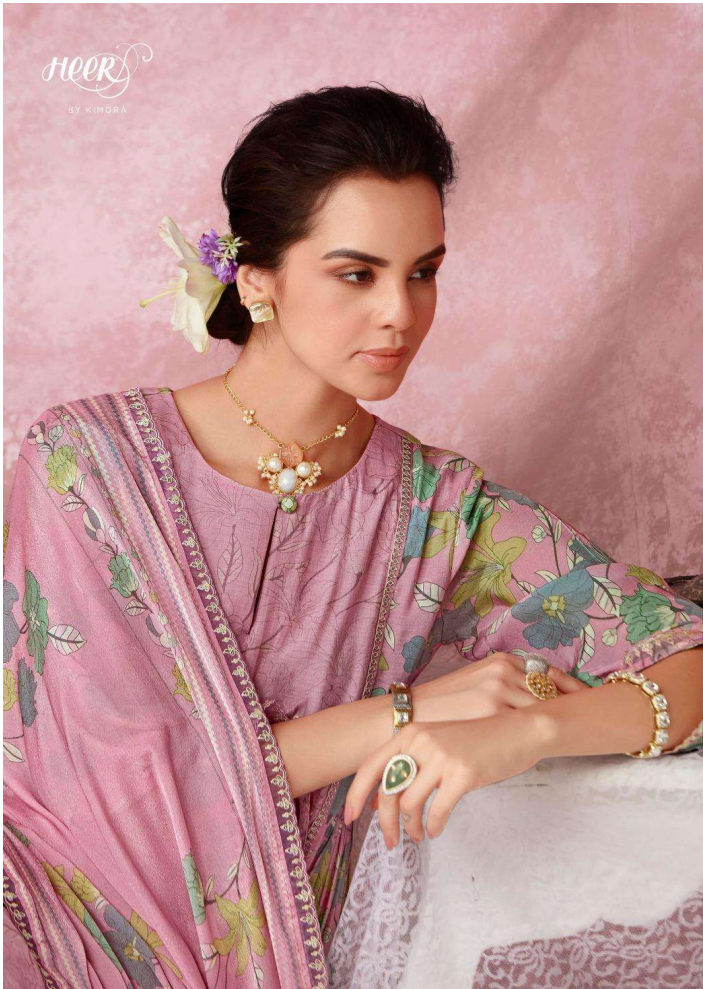
Heer

BY KIMORA

# TULIP



COLLECTION AVAILABLE



*Heer*

BY KIMORA

# TULIP

COLLECTION AVAILABLE





Heer  
BY KIMORA  
9625



FASHION FUSION



ELEGANCE DEFINED

9621

<b>Heer~Tulip~Vol-206</b>		
<b>SR.NO.</b>	<b>DESIGN NO</b>	<b>RATE</b>
1	D.NO.9621	2090.00
2	D.NO.9622	2090.00
3	D.NO.9623	2090.00
4	D.NO.9624	2090.00
5	D.NO.9625	2090.00
6	D.NO.9626	2090.00
<b>TOTAL :-</b>		<b>12540.00</b>



HEER  
BY KIMORA

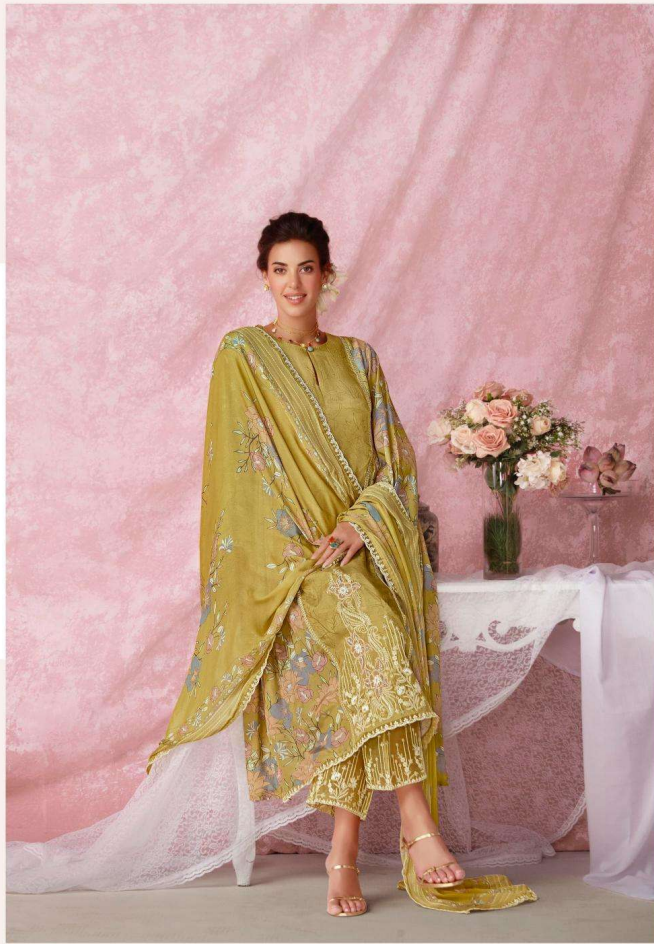


BOLD CONFIDENCE

9622







HEER  
BY KIMORA



ELEGANCE DEFINED

9621

*Heer*

BY KIMORA

# TULIP

## TOP

PURE MUSLIN WITH DIGITAL PRINT AND DORI SEQ EMBROIDERY  
WITH PATCH ON FRONT PANEL, SCALLOPED EMBROIDERY  
ORGANZA BORDER ON SLEEVES AND HEMLINE

## DUPATTA

PURE CHINNON WITH DIGITAL PRINT AND FOUR SIDE  
SCALLOPED DORI EMBROIDERY ORGANZA BORDER

## BOTTOM

PURE MUSLIN HEAVY WITH DORI SEQ EMBROIDERY  
ORGANZA BORDER

**kimora**<sup>®</sup>



HEER

BY KIMORA

TULIP

COLLECTION AVAILABLE



MODERN SOPHISTICATION

9623

*Heer*  
BY KIMORA





FASHION FUSION

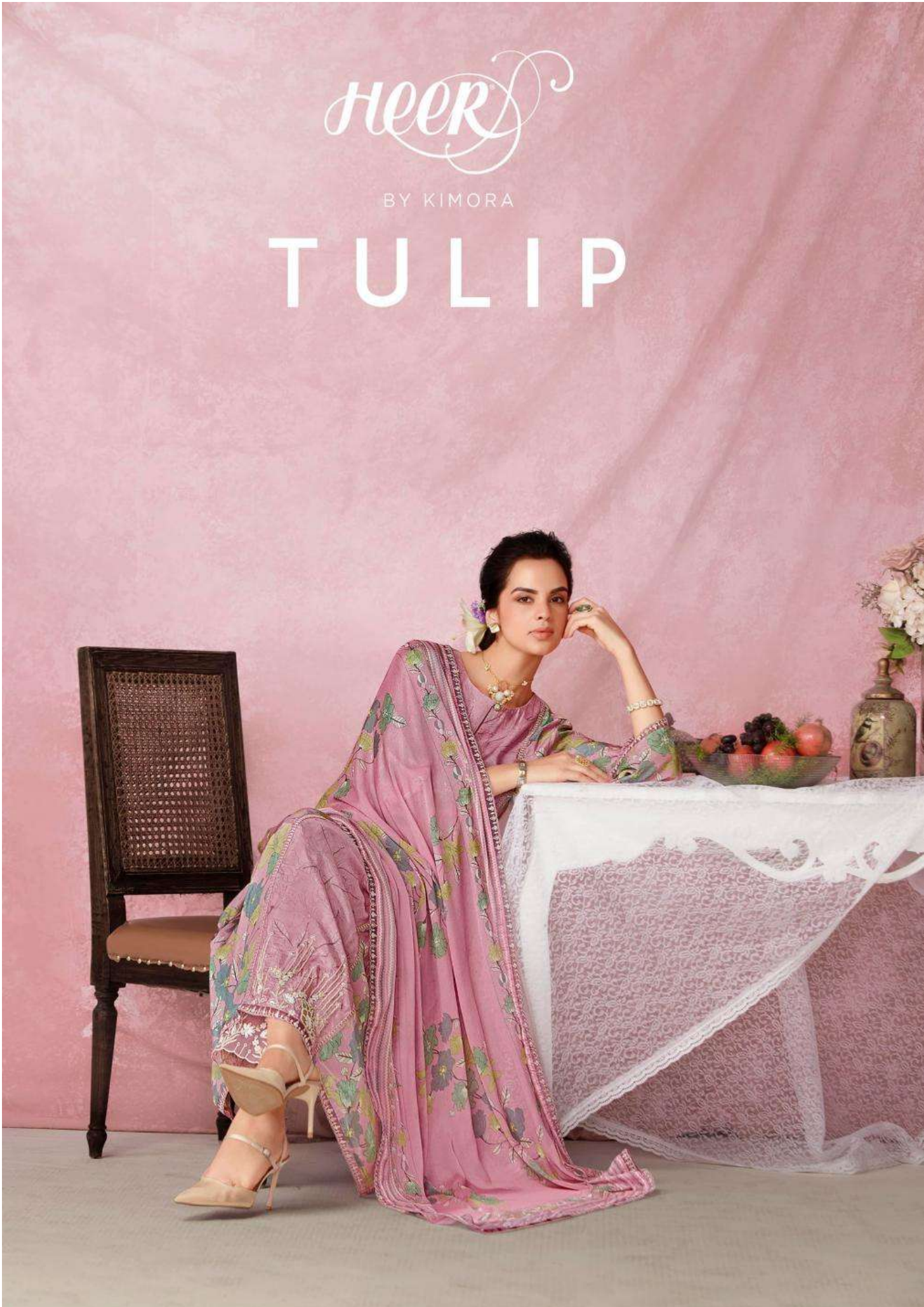
9625

*Heer*  
BY KIMORA

*Heer*

BY KIMORA

TULIP





PERSONAL FLAIR

9626

