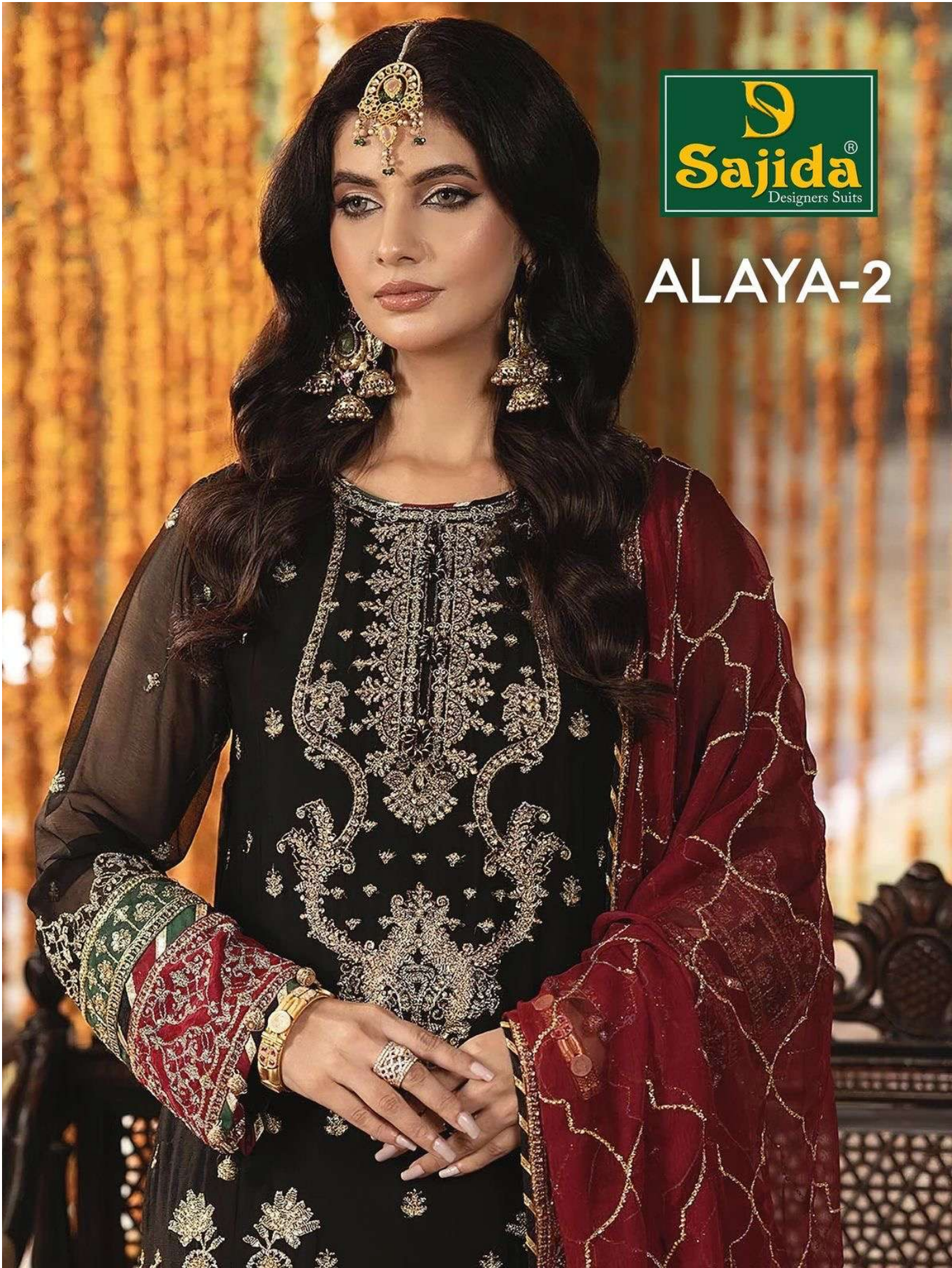




ALAYA-2





D.No: 1011



D.No: 1012



ALAYA-2

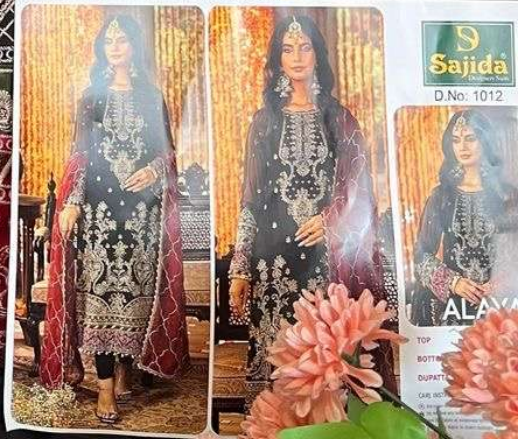
- TOP** Hevay Fox Georgette embroidery with Khatli work (cut 2.50)
- BOTTOM-INNER** Dull Santoon (cut 4.25)
- DUPATTA** Hevay Fox Georgette embroidery work (cut 2.30)

CARE INSTRUCTIONS

- ☉ Dry clean only
- ⊗ Do not use any bleach or stain removing chemical
- ☐ Iron the fabric at moderate temperature
- ⊗ Do not dry fabric in direct sunlight



Sajida
Designers Suits



Sajida
D.No: 1012

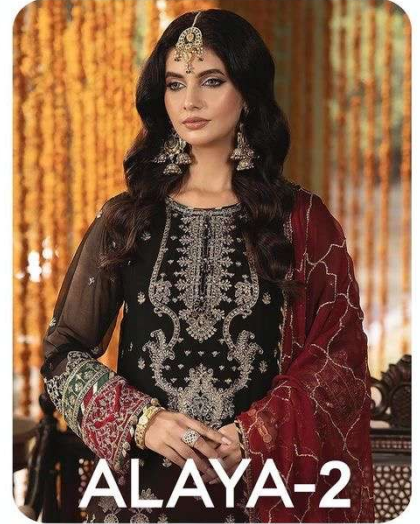
TOP
BOTTOM
DUPATTA
CARE





S
Sajida[™]
Designers Suits





D.No: 1012

ALAYA-2

TOP Heavy Fox Georgette embroidery with Khatli work (cut 2.50)

BOTTOM-INNER Dull Santoon (cut 4.25)

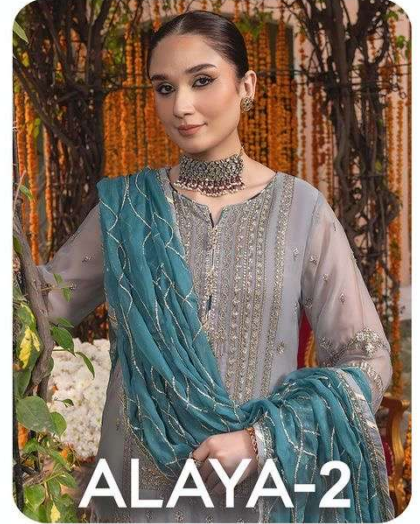
DUPATTA Heavy Fox Georgette embroidery work (cut 2.30)

CARE INSTRUCTIONS

- ☉ Dry clean only
- ⚠ Do not use any bleach or stain removing chemical
- ☐ Iron the fabric at moderate temperature
- ☒ Do not dry fabric in direct sunlight



D.No: 1011



TOP Heavy Fox Georgette embroidery with Khatli work (cut 2.50)

BOTTOM-INNER Dull Santoon (cut 4.25)

DUPATTA Heavy Fox Georgette embroidery work (cut 2.30)

CARE INSTRUCTIONS

- ☉ Dry clean only
- ⚠ Do not use any bleach or stain removing chemical
- ☐ Iron the fabric at moderate temperature
- ☒ Do not dry fabric in direct sunlight



ALAYA-2

