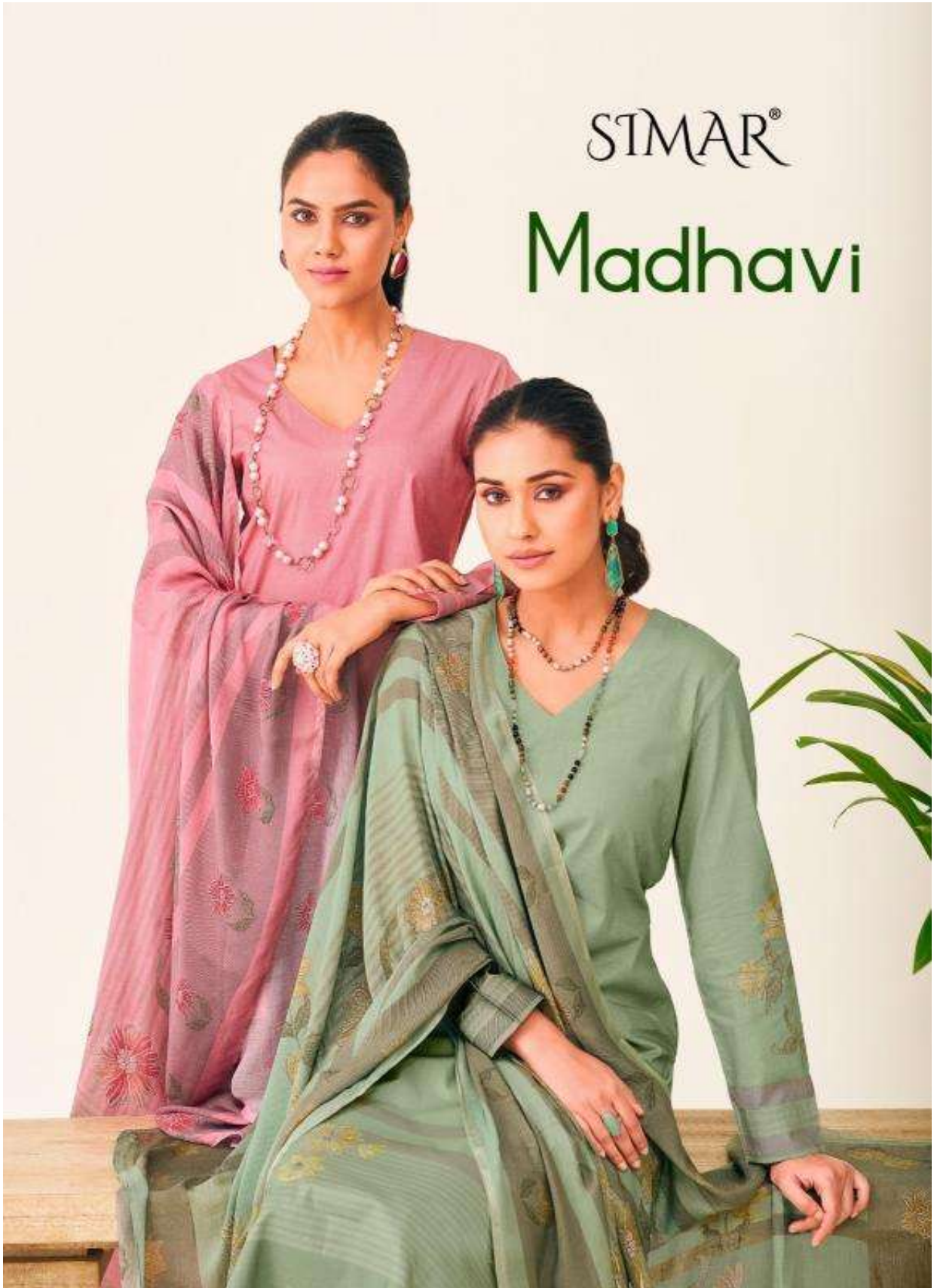


STIMAR®

Madhavi





2013-B

The Name of Saree is 'Saree', wear that mixes the contemporary
 pure quality fabrics with modern details of elegance



SIMAR®



2013-C

Autumn & Winter 2013-14
Have inspired trends around the world



STMAR®



PRODUCT NAME	Madhavi
D.NO.	2013
DESCRIPTION	<p>: TOP : PURE LAWN COTTON DIGITAL PRINT WITH HANDWORK</p> <p>: BOTTOM : PURE LAWN COTTON SOLID DYED</p> <p>: DUPATTA : PURE VISOCE MUSLIN DIGITAL PRINT</p>



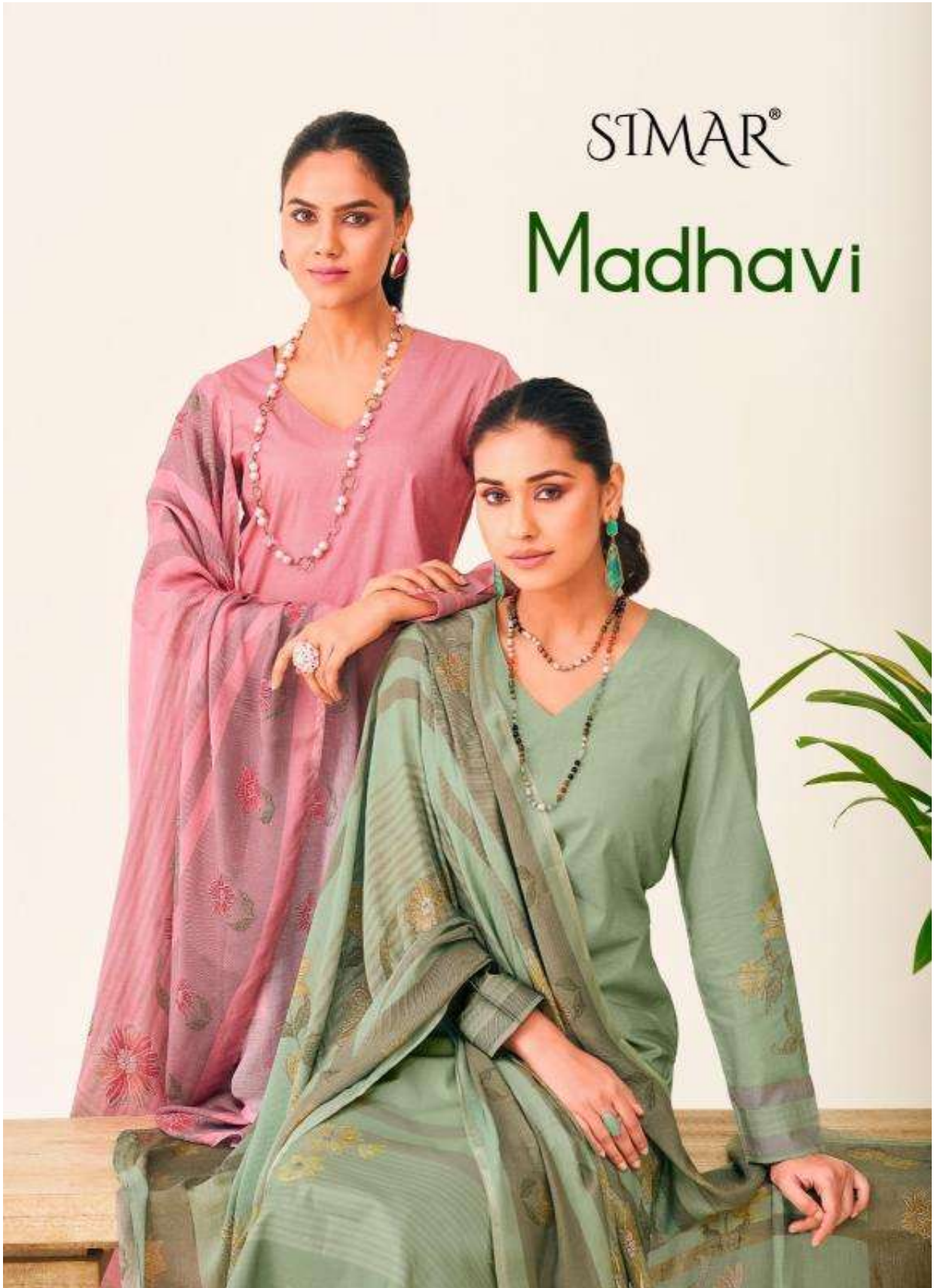
STIMAR®



"The way is to connect two elements so you don't
and to ever doing the finishing operation"

STIMAR®

Madhavi



STMAR®

Madhavi



2013-A



2013-B



2013-C



2013-D



STIMAR®



2013-A

A blend of colors that highlight every corner of the intricate design
that is handloomed, you will love it deeply



STIMAR®



2013-D


The glamour is something which attracts all the
attention in about 10 seconds.

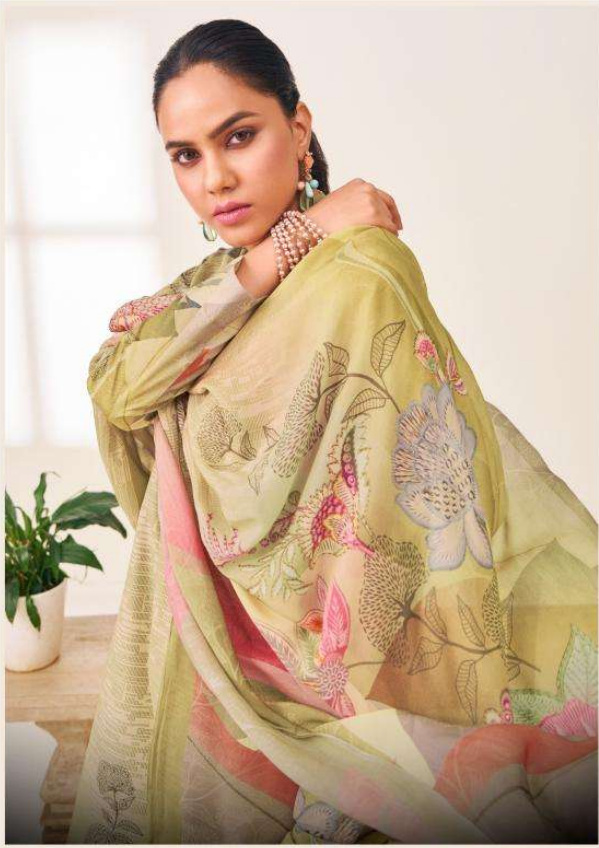


Madhavi

Classic style with luxurious soft fabrics and high quality

by choice and feminine details

A small, green, leafy plant is shown in a white, ribbed ceramic pot. The plant has several long, thin leaves that curve upwards. The pot is simple and modern in design.



SIMAR®

PRODUCT NAME	Archana
D.NO.	2010
DESCRIPTION	<p>: TOP : PURE LAWN COTTON DIGITAL PRINT WITH HANDWORK</p> <p>: BOTTOM : PURE LAWN COTTON SOLID DYED</p> <p>: DUPATTA : PURE VISOCE MUSLIN DIGITAL PRINT</p>

SIMAR®

Archana



2010-A



2010-B



2010-C



2010-D



STMAR®



Weaver

2010-D



Archana

Blossom

The dynamics of fashion

