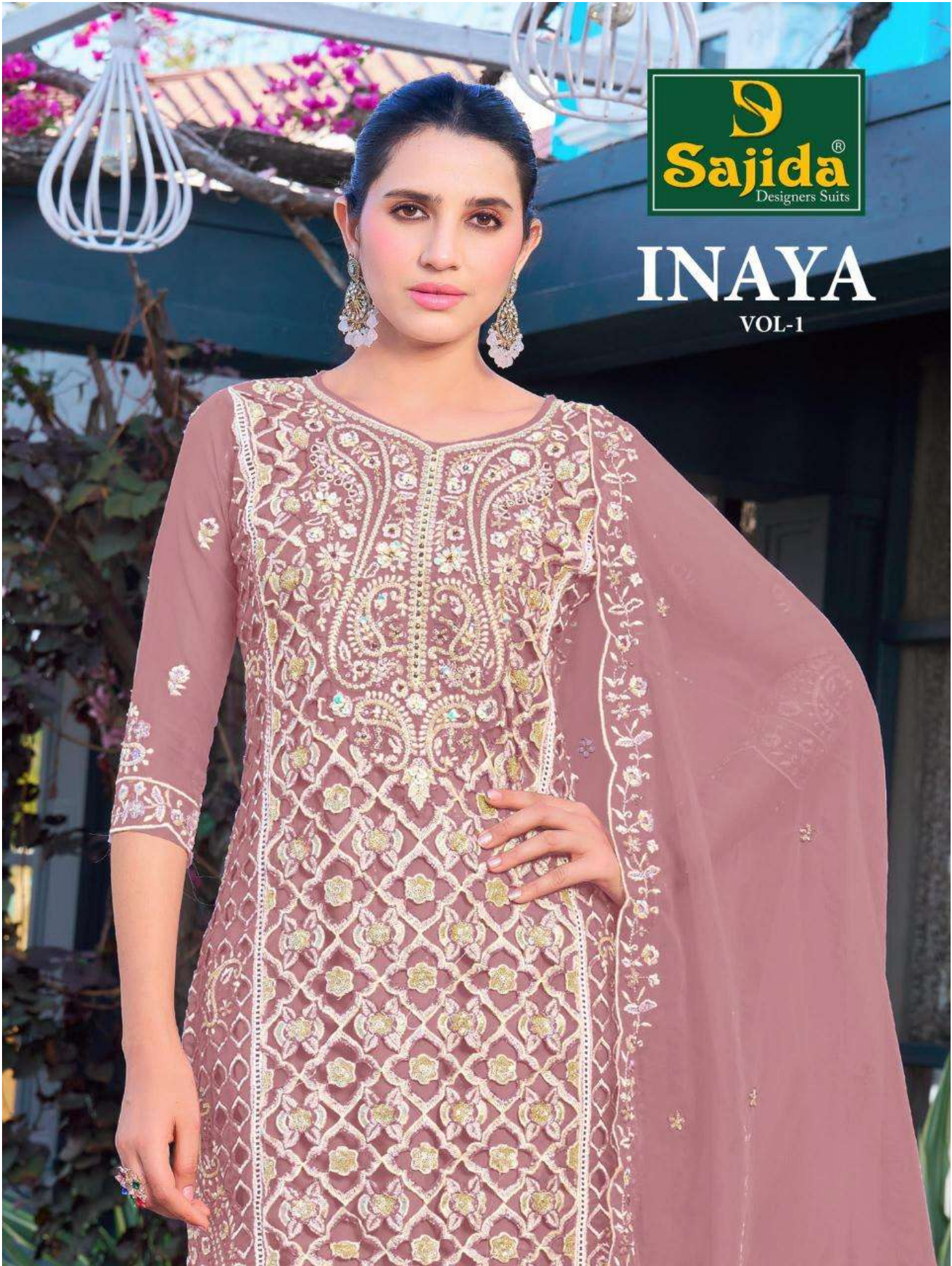




INAYA

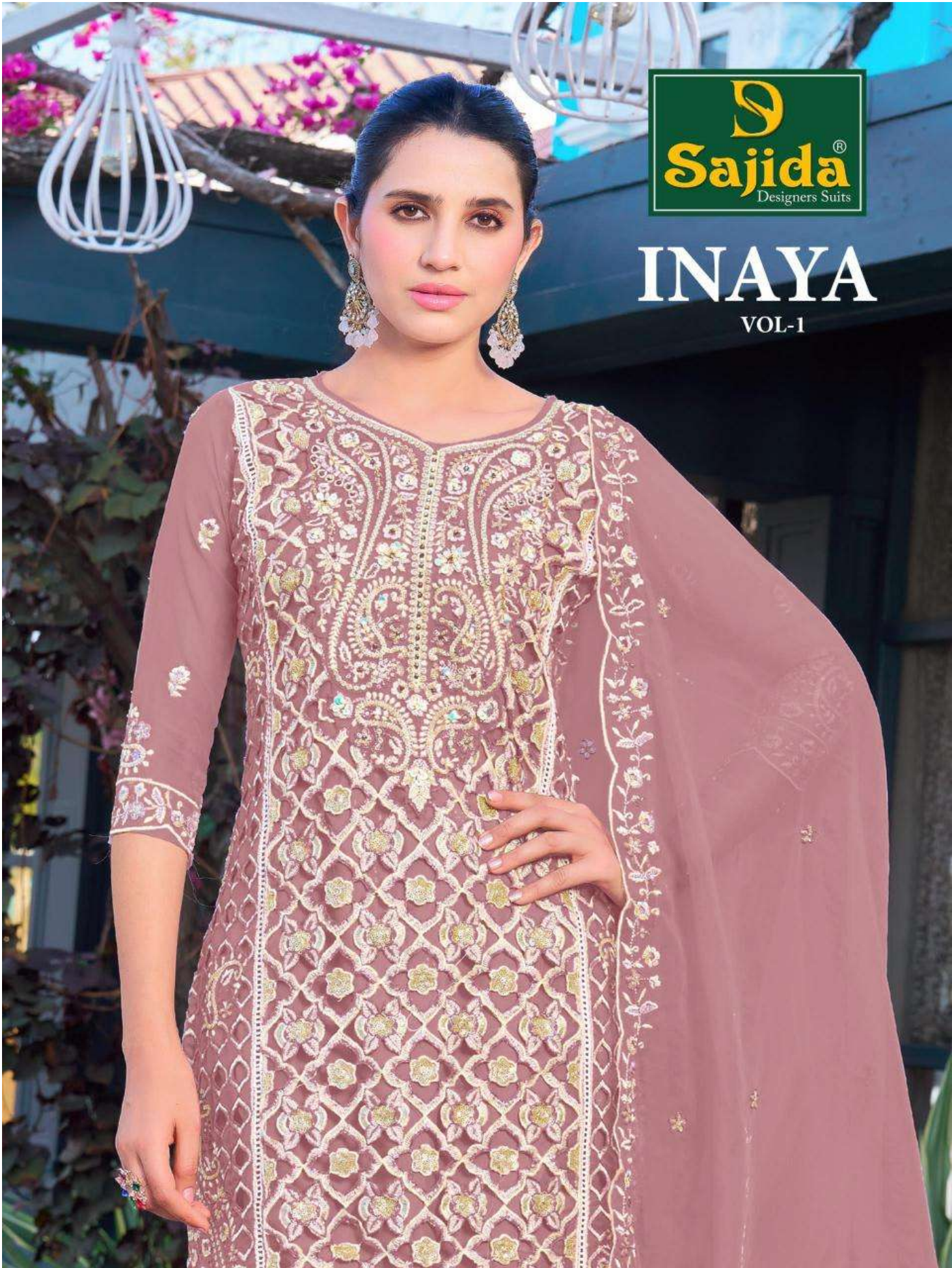
VOL-1





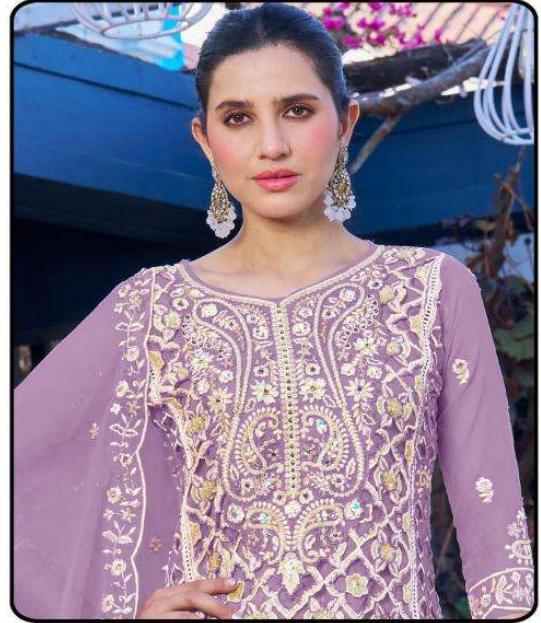
INAYA

VOL-1





INAYA-1



TOP

Heavy Orgenza Embroidery
with Khatli work (cut 2.50)

BOTTOM-INNER

Dull Santoon (cut 4.25)

DUPATTA

Heavy Orgenza Embroidery
work (cut 2.30)

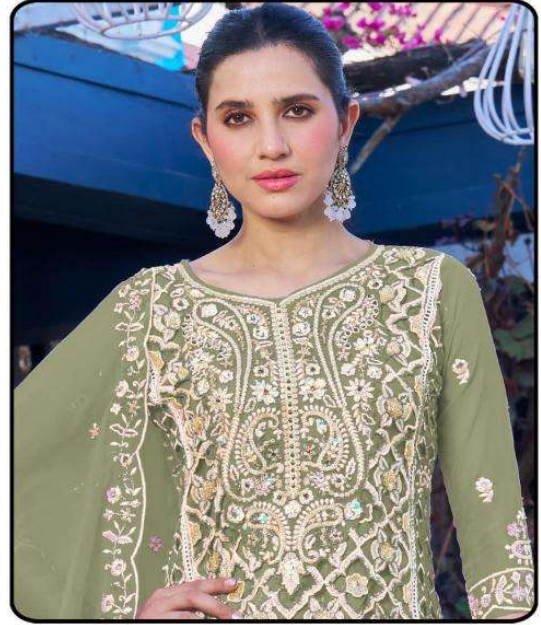
D.No: 1041-A

CARE INSTRUCTIONS

- ☐ Dry clean only
- ⚠ Do not use any bleach or stain removing chemical
- ☐ Iron the fabric at moderate temperature
- ☒ Do not dry fabric in direct sunlight



INAYA-1



TOP

Heavy Orgenza Embroidery
with Khatli work (cut 2.50)

BOTTOM-INNER

Dull Santoon (cut 4.25)

DUPATTA

Heavy Orgenza Embroidery
work (cut 2.30)

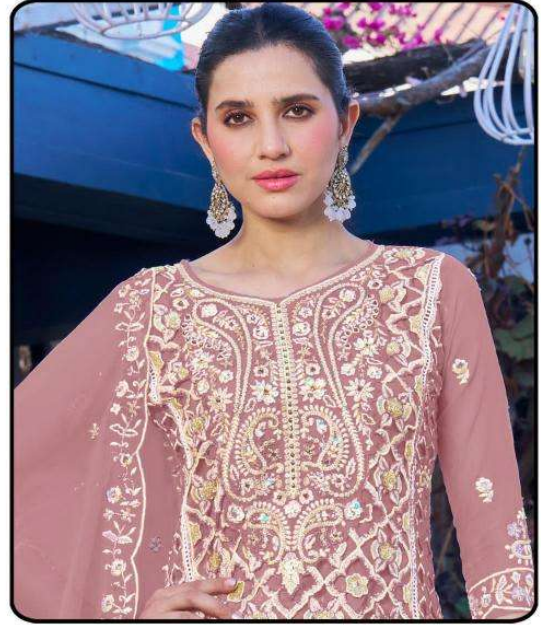
D.No: 1041-B

CARE INSTRUCTIONS

- ☐ Dry clean only
- ⚠ Do not use any bleach or stain removing chemical
- ☐ Iron the fabric at moderate temperature
- ☒ Do not dry fabric in direct sunlight



INAYA-1



TOP

Heavy Orgenza Embroidery with Khatli work (cut 2.50)

BOTTOM-INNER

Dull Santoon (cut 4.25)

DUPATTA

Heavy Orgenza Embroidery work (cut 2.30)

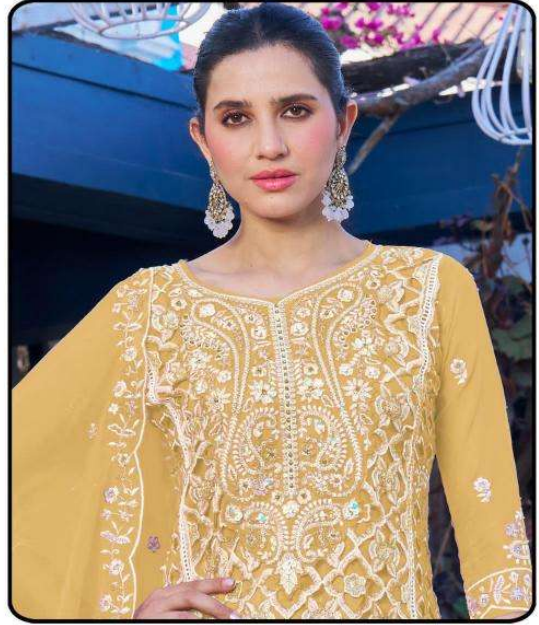
D.No: 1041-C

CARE INSTRUCTIONS

- ☐ Dry clean only
- ⚠ Do not use any bleach or stain removing chemical
- ☐ Iron the fabric at moderate temperature
- ☒ Do not dry fabric in direct sunlight



INAYA-1



TOP

Heavy Orgenza Embroidery
with Khatli work (cut 2.50)

BOTTOM-INNER

Dull Santoon (cut 4.25)

DUPATTA

Heavy Orgenza Embroidery
work (cut 2.30)

D.No: 1041-D

CARE INSTRUCTIONS

- ☐ Dry clean only
- ⚠ Do not use any bleach or stain removing chemical
- ☐ Iron the fabric at moderate temperature
- ☒ Do not dry fabric in direct sunlight



INAYA

VOL-1

CARE INSTRUCTIONS

- ☉ Dry clean only
- ⚠ Do not use any bleach or stain removing chemical
- ☎ Iron the fabric at moderate temperature
- ☒ Do not dry fabric in direct sunlight

TOP

Heavy Orgenza Embroidery with Khatli work (cut 2.50)

BOTTOM-INNER

Dull Santoon (cut 4.25)

DUPATTA

Heavy Orgenza Embroidery work (cut 2.30)



D.No: 1041-A



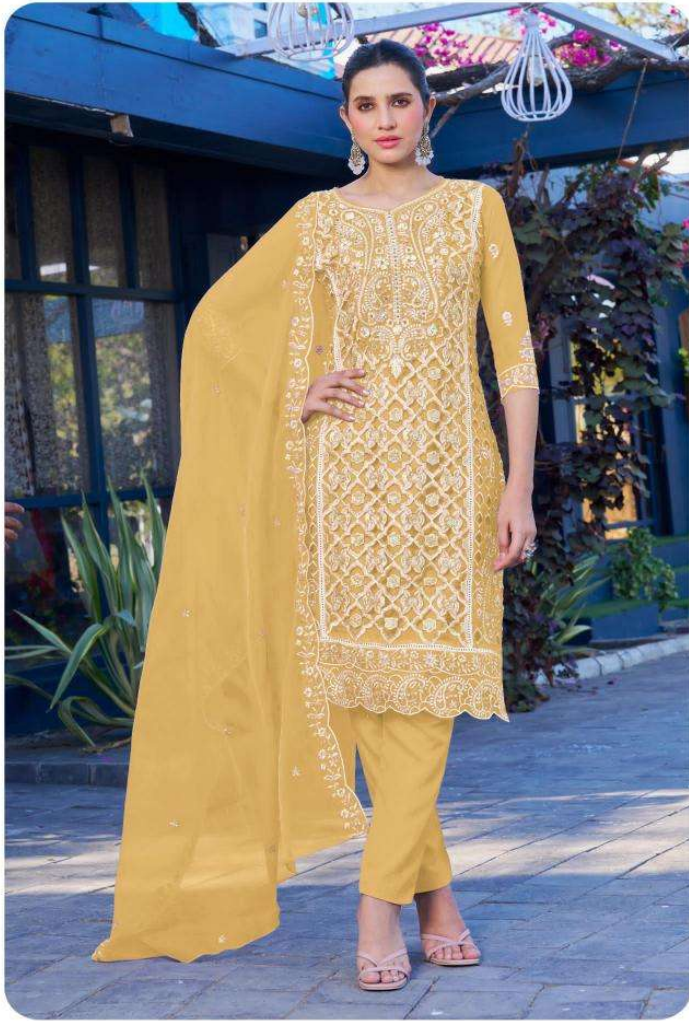
D.No: 1041-B



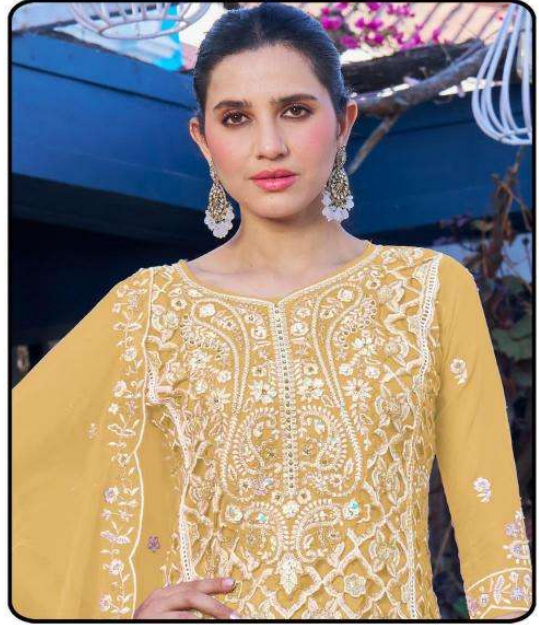
D.No: 1041-C



D.No: 1041-D



INAYA-1



TOP

Heavy Orgenza Embroidery
with Khatli work (cut 2.50)

BOTTOM-INNER

Dull Santoon (cut 4.25)

DUPATTA

Heavy Orgenza Embroidery
work (cut 2.30)

D.No: 1041-D

CARE INSTRUCTIONS

- ☐ Dry clean only
- ⚠ Do not use any bleach or stain removing chemical
- ☐ Iron the fabric at moderate temperature
- ☒ Do not dry fabric in direct sunlight