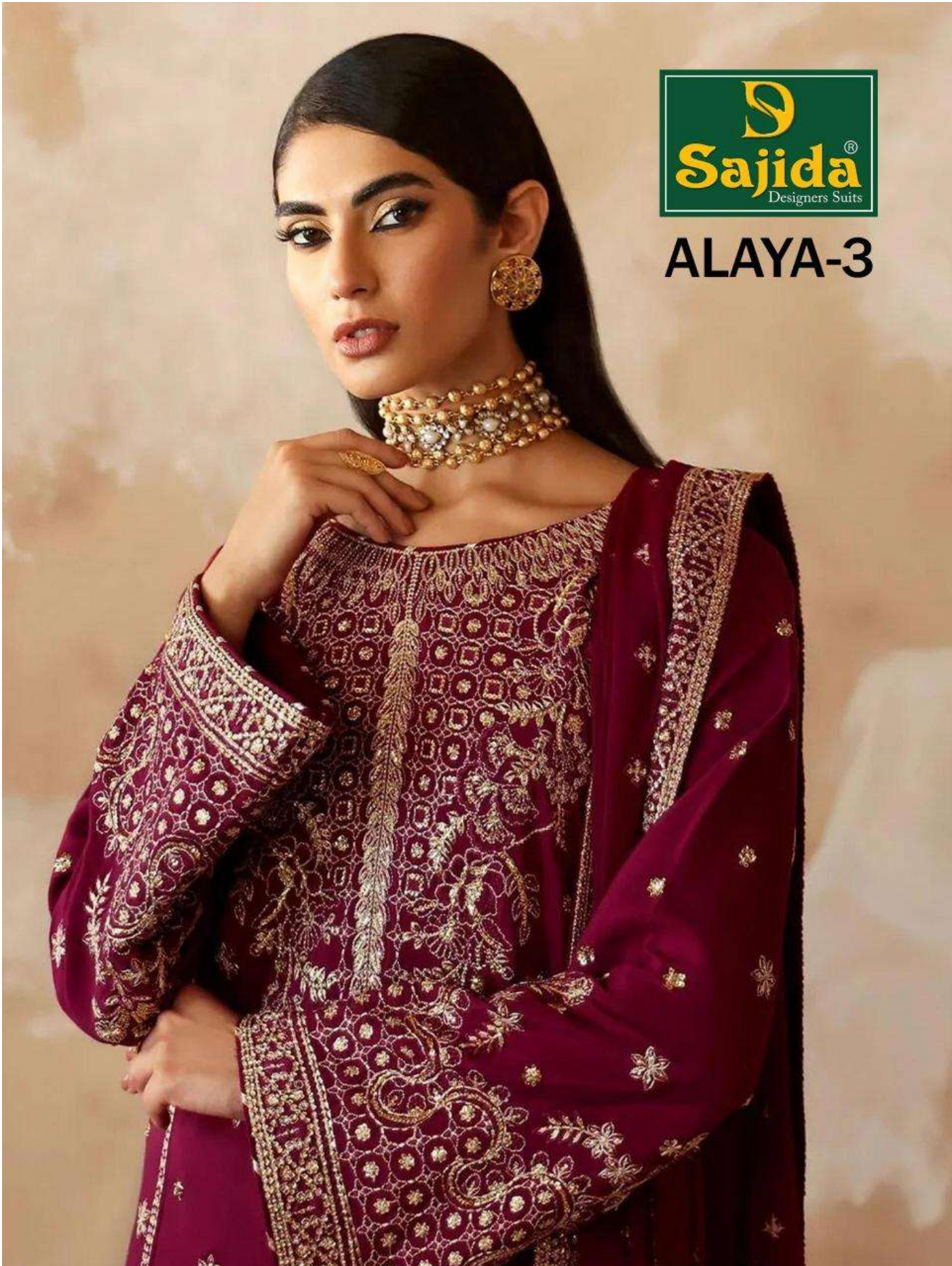




ALAYA-3





ALAYA-3



D.No.1027



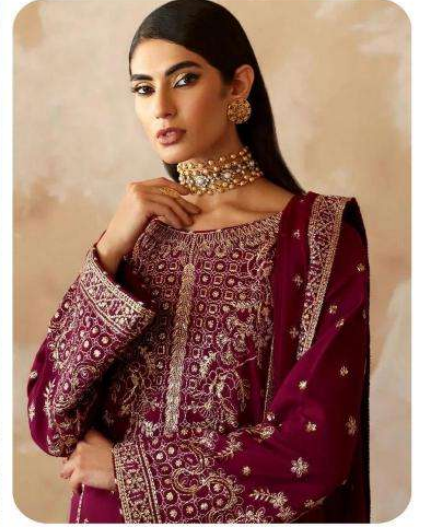
D.No.1028



D.No.1029



ALAYA-3



D.No.1029

TOP Heavy Fox Georgette embroidery with Khatli work (cut 2.50)

BOTTOM-INNER Dull Santoon (cut 4.25)

DUPATTA Heavy Fox Georgette embroidery work (cut 2.30)

CARE INSTRUCTIONS

- ☉ Dry clean only
- ✘ Do not use any bleach or stain removing chemical
- ☰ Iron the fabric at moderate temperature
- ☒ Do not dry fabric in direct sunlight



ALAYA-3



D.No.1028

TOP Hevay Fox Georgette embroidery with Khatli work (cut 2.50)

BOTTOM-INNER Dull Santoon (cut 4.25)

DUPATTA Hevay Fox Georgette with digital print (cut 2.30)

CARE INSTRUCTIONS

- Ⓢ Dry clean only
- ✘ Do not use any bleach or stain removing chemical
- ☰ Iron the fabric at moderate temperature
- ☒ Do not dry fabric in direct sunlight



ALAYA-3



D.No.1027

TOP Heavy Fox Georgette embroidery with Khatli work (cut 2.50)

BOTTOM-INNER Dull Santoon (cut 4.25)

DUPATTA Heavy Fox Georgette embroidery work (cut 2.30)

CARE INSTRUCTIONS

- ⦿ Dry clean only
- ✘ Do not use any bleach or stain removing chemical
- ☰ Iron the fabric at moderate temperature
- ⊗ Do not dry fabric in direct sunlight



ALAYA-3

