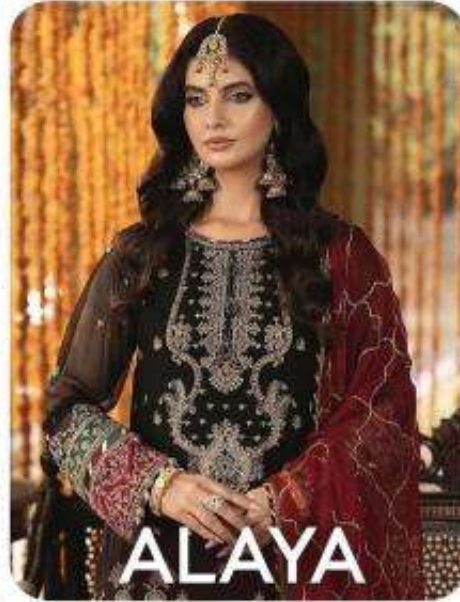




D.No: 1012



TOP

Heavy Fox Georgette embroidery with Khatli work (cut 2.50)

BOTTOM-INNER

Dull Santoon (cut 4.25)

DUPATTA

Heavy Fox Georgette embroidery work (cut 2.30)

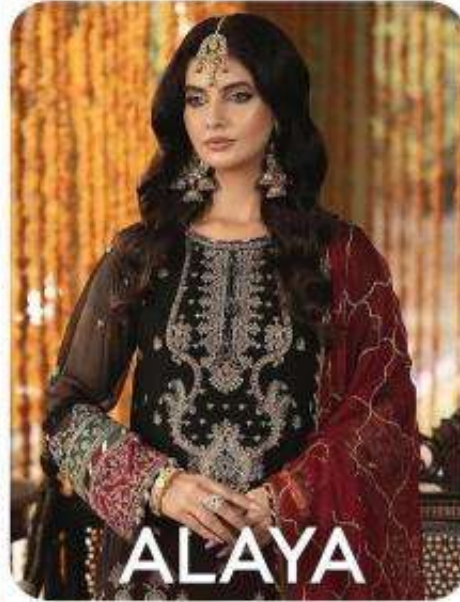
CARE INSTRUCTIONS

- 🧼 Dry clean only
- ⚠️ Do not use any bleach or stain removing chemical
- 🧊 Iron the fabric at moderate temperature
- ☀️ Do not dry fabric in direct sunlight





D.No: 1012



TOP

Heavy Fox Georgette embroidery with Khatli work (cut 2.50)

BOTTOM-INNER

Dull Santoon (cut 4.25)

DUPATTA

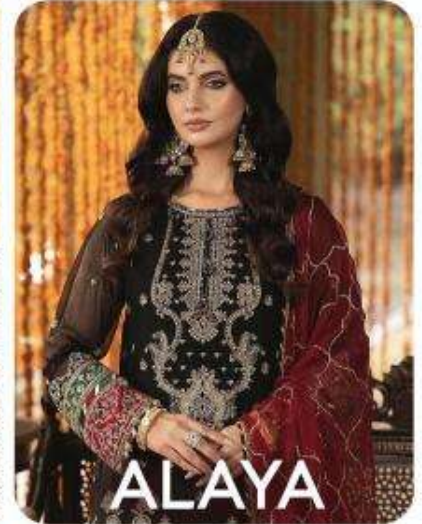
Heavy Fox Georgette embroidery work (cut 2.30)

CARE INSTRUCTIONS

- ☑ Dry clean only
- ☒ Do not use any bleach or stain removing chemical
- ☑ Iron the fabric at moderate temperature
- ☒ Do not dry fabric in direct sunlight



D.No: 1012



TOP Heavy Fox Georgette embroidery with Khatli work (cut 2.50)

BOTTOM-INNER Dull Santoon (cut 4.25)

DUPATTA Heavy Fox Georgette embroidery work (cut 2.30)

CARE INSTRUCTIONS

- ☉ Dry clean only
- ⚠ Do not use any bleach or stain removing chemical
- ☐ Iron the fabric at moderate temperature
- ☒ Do not dry fabric in direct sunlight

S
Sajida
Designers Suits

