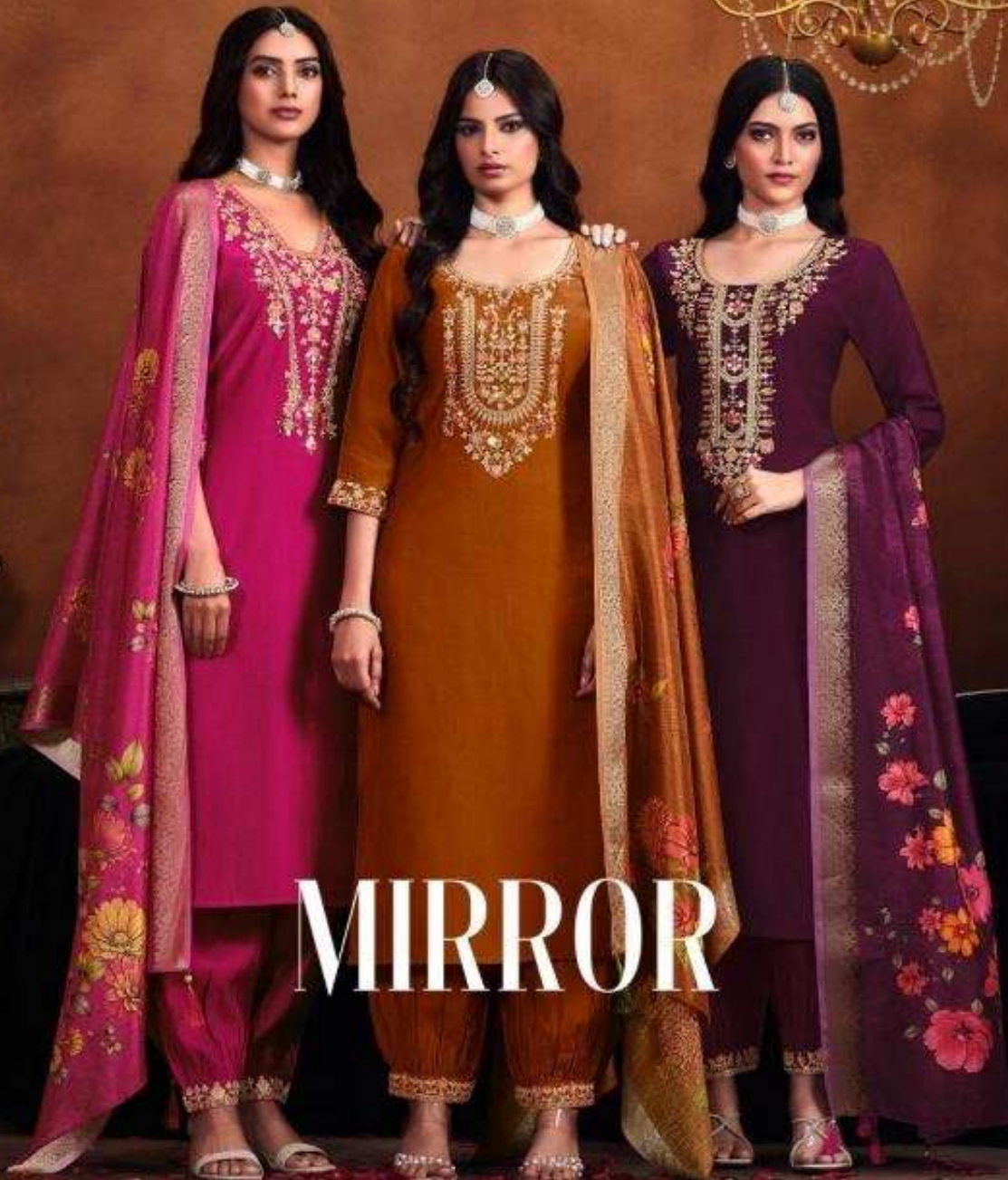
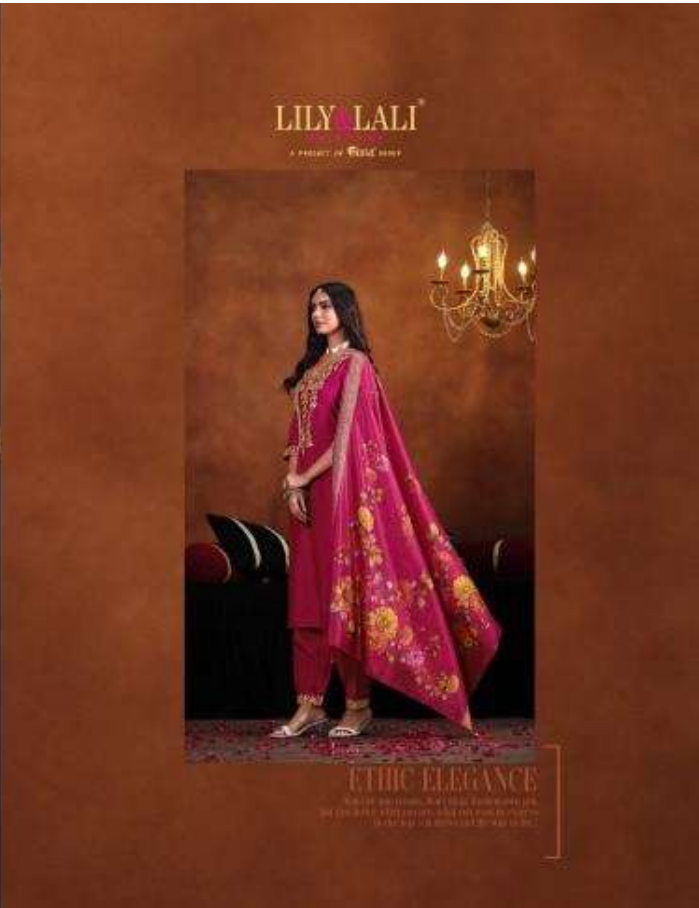


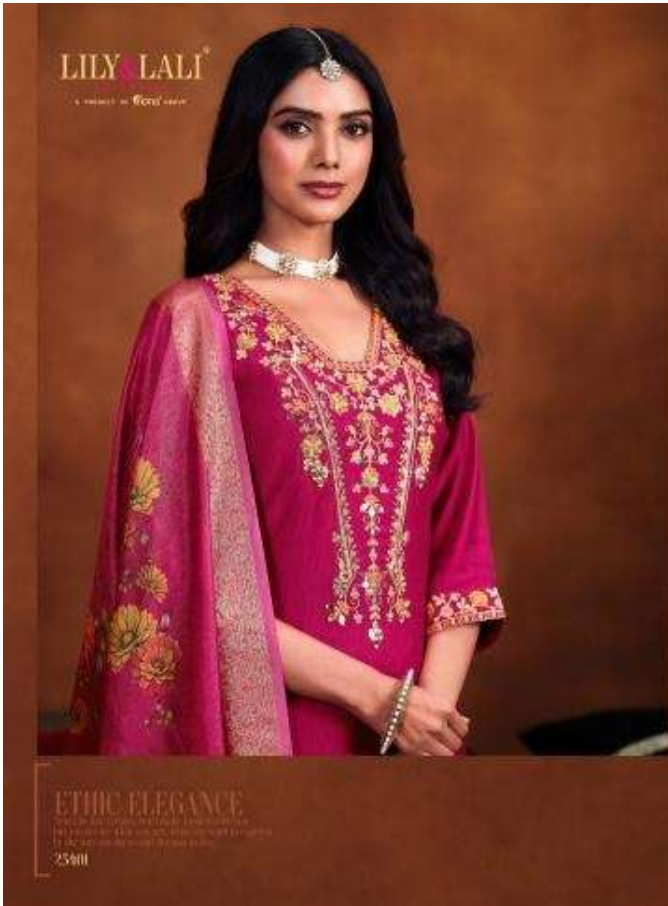
L&L  
NEW ARRIVAL  
2025  
COLLECTION

LILY & LALI®  
GULS PRIDE  
A PRODUCT OF Fiona® GROUP



MIRROR







LILY LALI

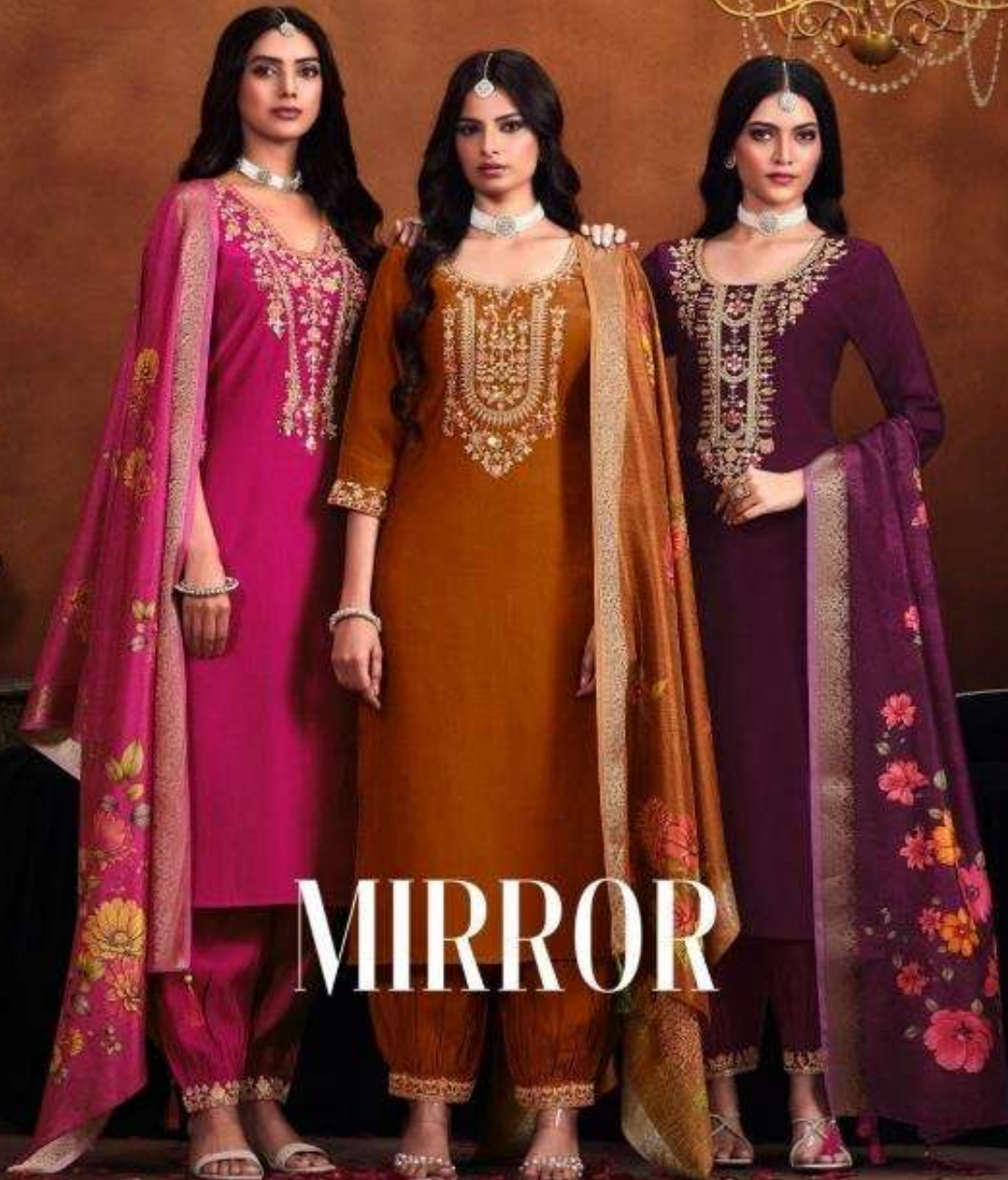
a member of KLEIN GROUP

ETHIC ELEGANCE

For more information, visit our website: [www.lilylali.com](http://www.lilylali.com)  
Call us at: 020-26111111 | 020-26111112  
© 2017 Lily Lali. All rights reserved.

L&L  
NEW ARRIVAL  
2025  
COLLECTION

LILY & LALI<sup>®</sup>  
GULS PRIDE  
A PRODUCT OF Fiona<sup>®</sup> GROUP



MIRROR

LILY LALI

A PRODUCT OF BANGALORE



ETHIC BEAUTY

ETHIC BEAUTY IS A BRAND OF LILY LALI. IT IS A BRAND OF ETHIC BEAUTY. IT IS A BRAND OF ETHIC BEAUTY. IT IS A BRAND OF ETHIC BEAUTY.

23402





LILY LALI

A PROMISE OF BEAUTY SINCE 1992



25401



25402



25403



25404



25405

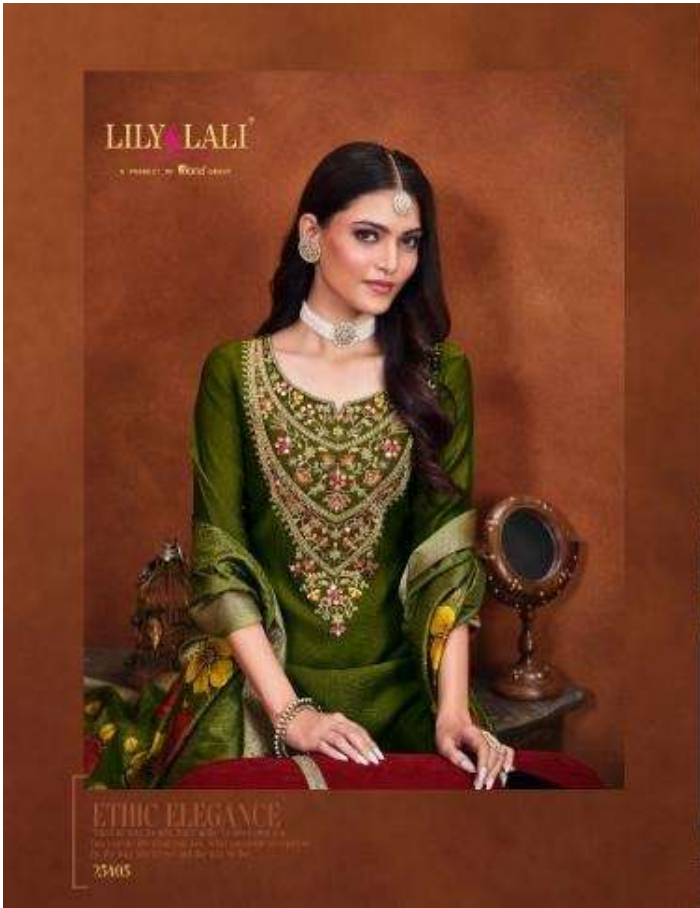


25406

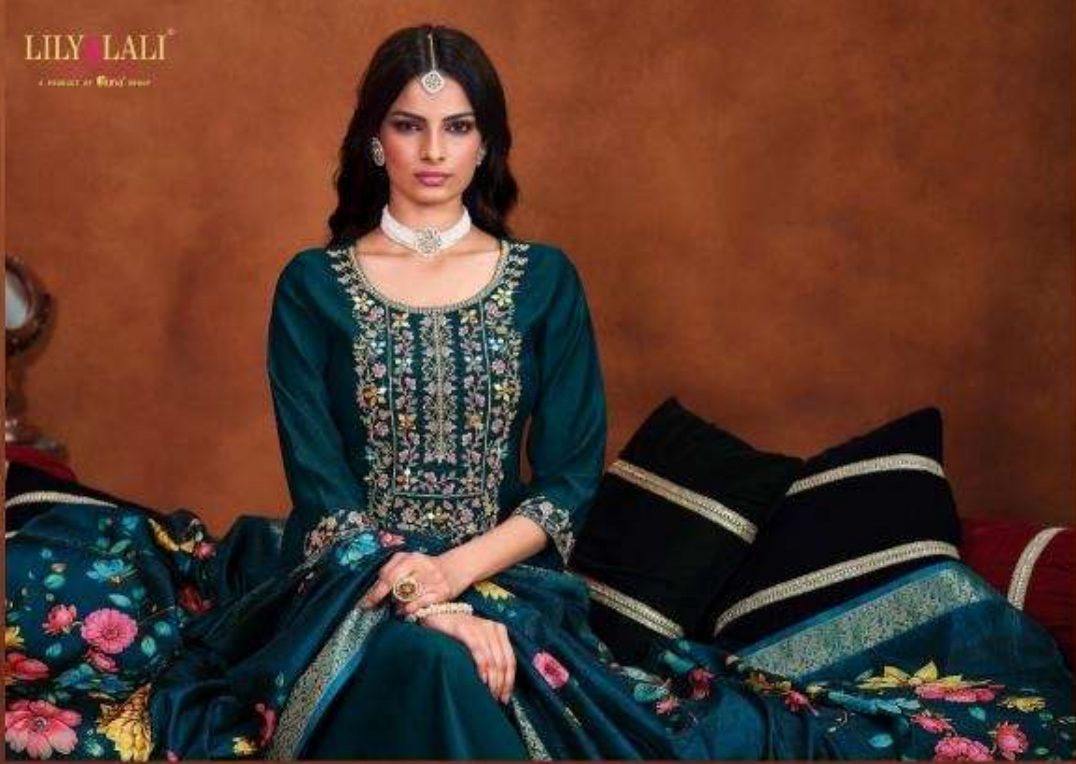


MIRROR





LILY LALI  
A PRODUCT OF LALITA

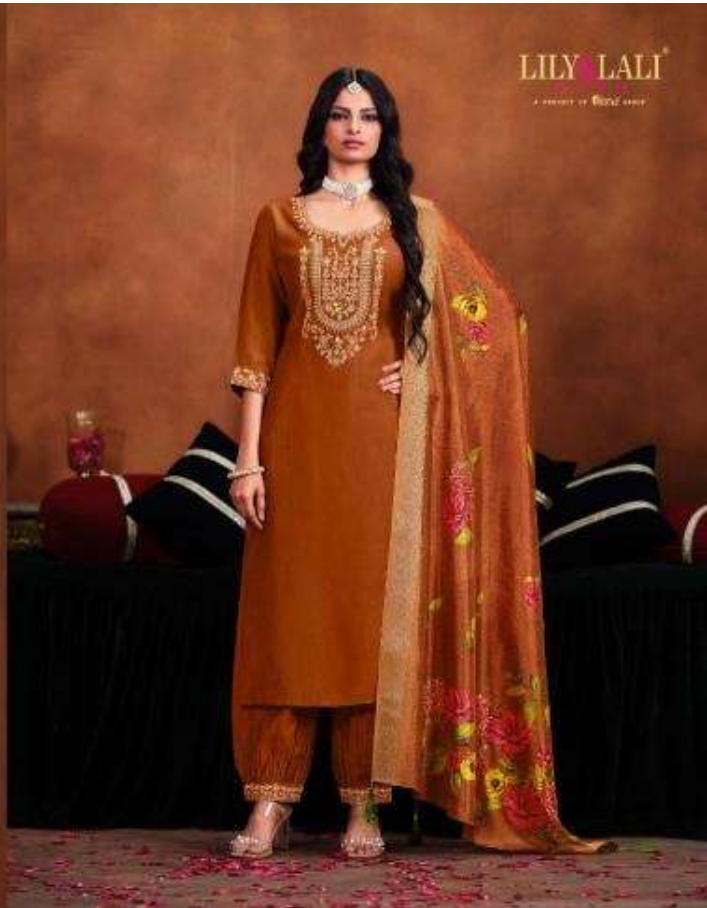


ETHIC ELEGANCE

Handmade embroidery, hand block, and hand-drawn prints are used to create a unique and elegant look. The fabric is a blend of cotton and silk, making it comfortable and breathable.









LILY & LALI<sup>®</sup>  
A PRODUCT OF BANGALORE

ETHIC ELEGANCE  
We're committed to ethical fashion and fair trade practices. We're committed to quality and craftsmanship. We're committed to the best and the very best.



LILY LALI

A PRODUCT OF BANGALORE

ETHIC ELEGANCE

TRUST IN OUR BRAND, TRUST OUR ETHICS. WE ARE  
FOR OUR CUSTOMERS AND THE WORLD. WE ARE THE FUTURE OF FASHION.  
WE ARE THE FUTURE OF FASHION.

LILY LALI

© 2024 LILY LALI



ETHIC QUEEN

Handcrafted with precision and care, this collection is a testament to the artistry of traditional Indian fashion.



