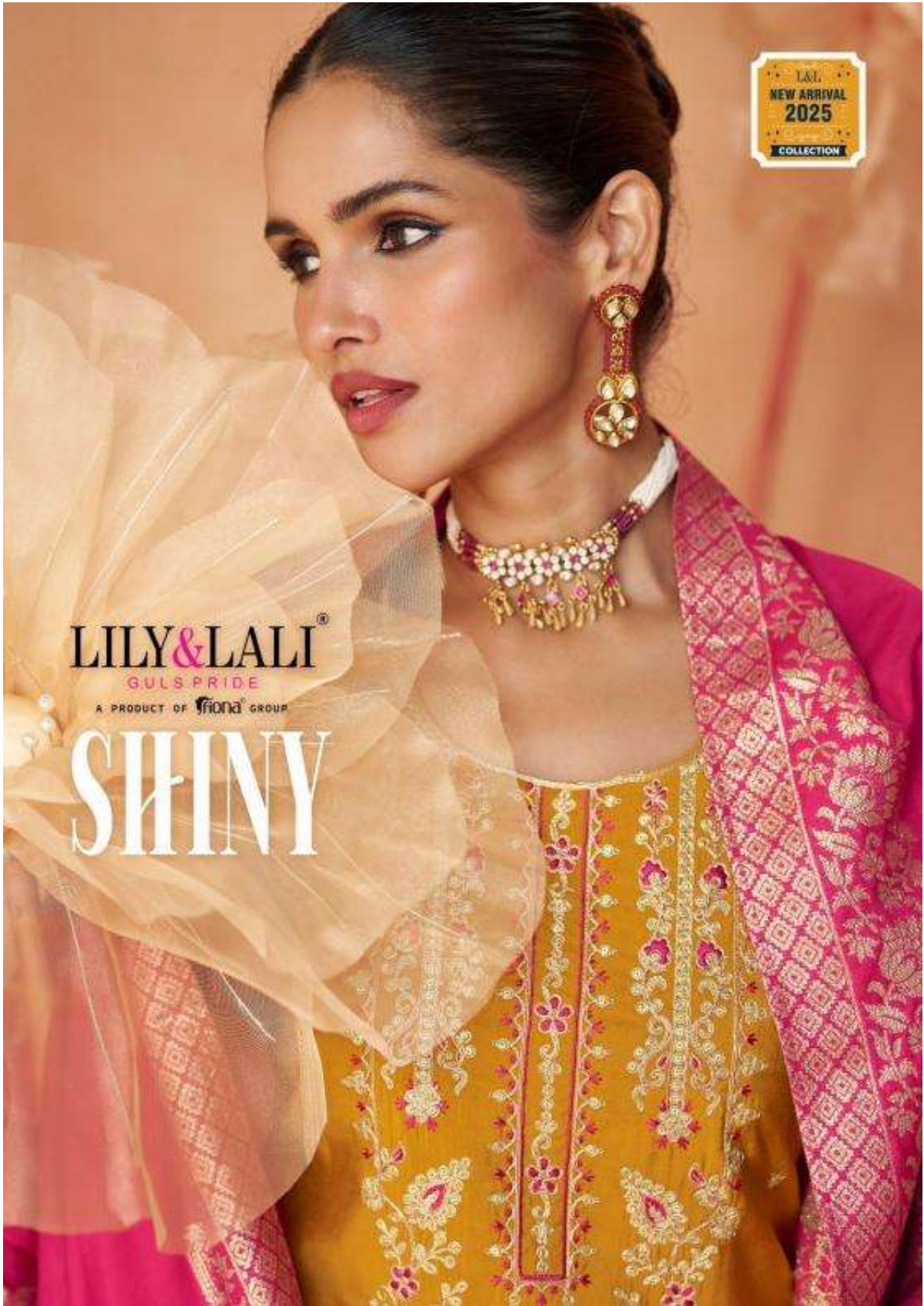
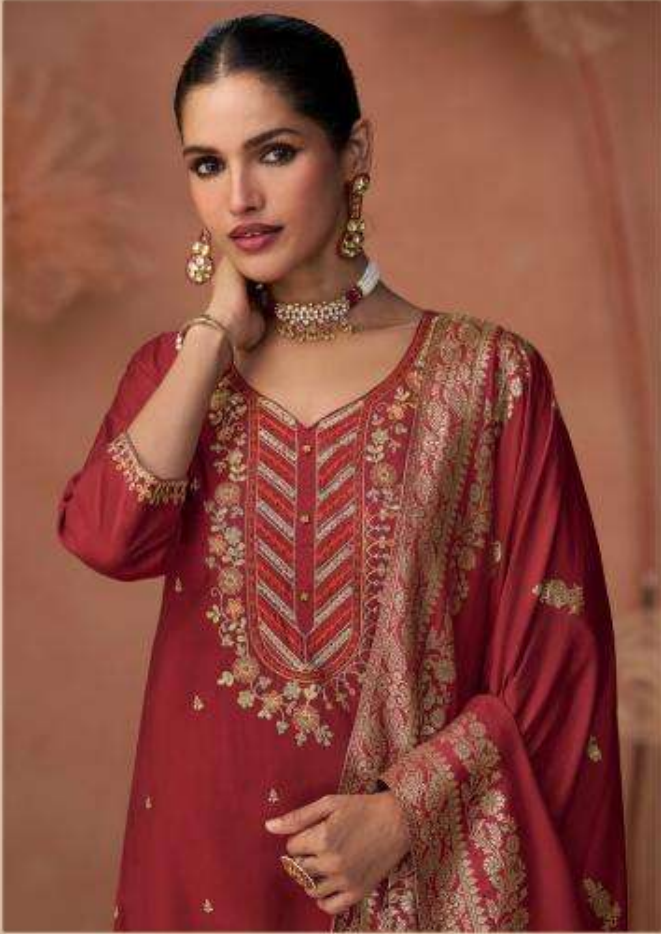


L&L
NEW ARRIVAL
2025
COLLECTION

LILY & LALI[®]
GULS PRIDE
A PRODUCT OF **fiona** GROUP

SHINY







Fuel your love

Fuel your love for tradition with this reimagined dress, and make your wardrobe worth preserving.

24802

LILY & LALI
A MEMBER OF THE LALANI GROUP





LILY LALI
A PRODUCT OF BIKKI GROUP

Find your look for wedding
with this collection
from our new year collection
with inspiration
54802

Keep it simple 🌸



Keep it simple, they will disagree!

The subtle shimmer will sparkle to the

perfect lighting when you

keep your look simple and elegant.

24803

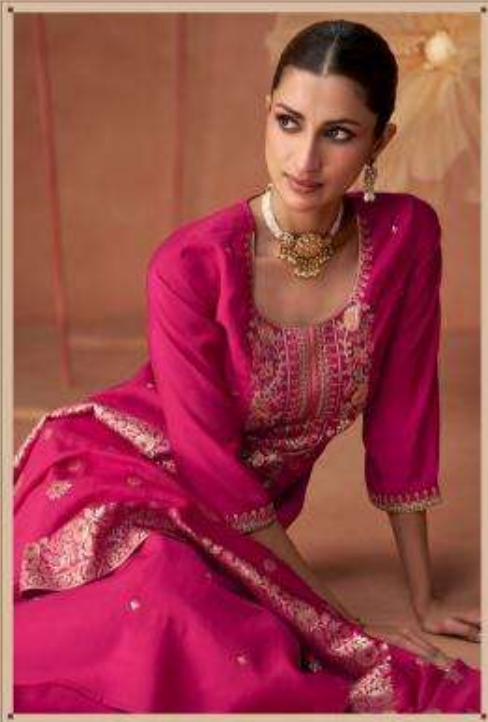


LILY LALI
A PRODUCT OF KASHI, INDIA





LILY&LALI
LIVE & PRIDE
A BRAND BY KUTAI KUTAI



Always in our mind about designing a collection reflecting our cultural heritage and our sustainable practices.

20204



cultural heritage

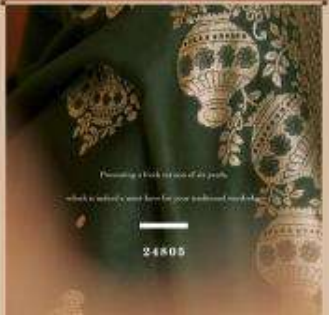




LILY & LALI
SINCE 1982
A brand by KIRAN JOSHI



traditional



Preserving a tradition that spans of six years,
which is indeed a great honor for your traditional wardrobe.

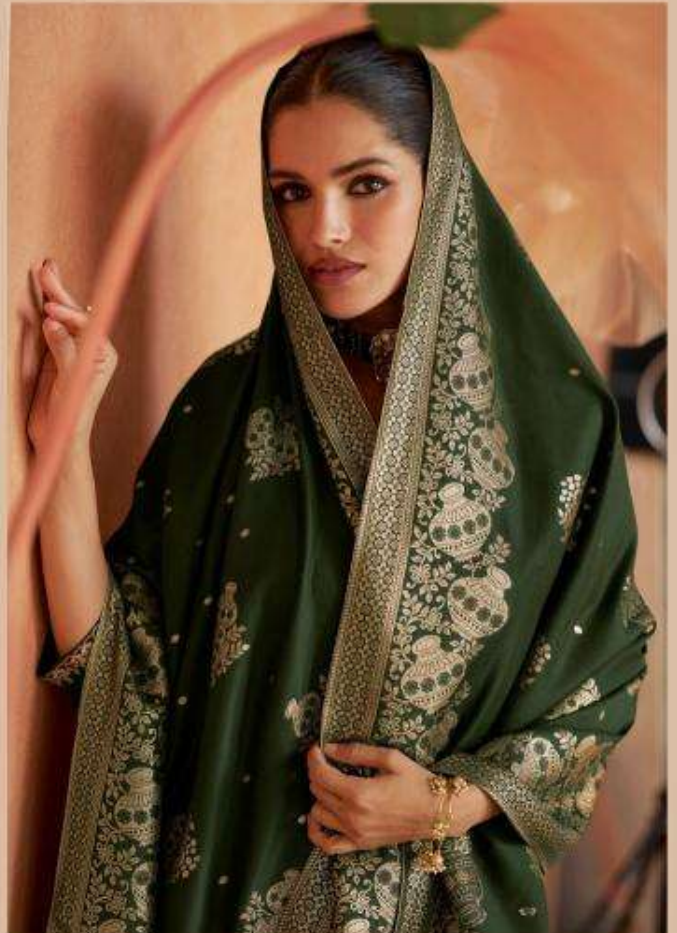
24800

LILY & LALI
WEDDING WEAR
a brand by Lily & Lali



Product Code
Material: 100% Cotton
Included: 1 piece (Dress)
Price: ₹ 24,900

24900





sartorial elegance

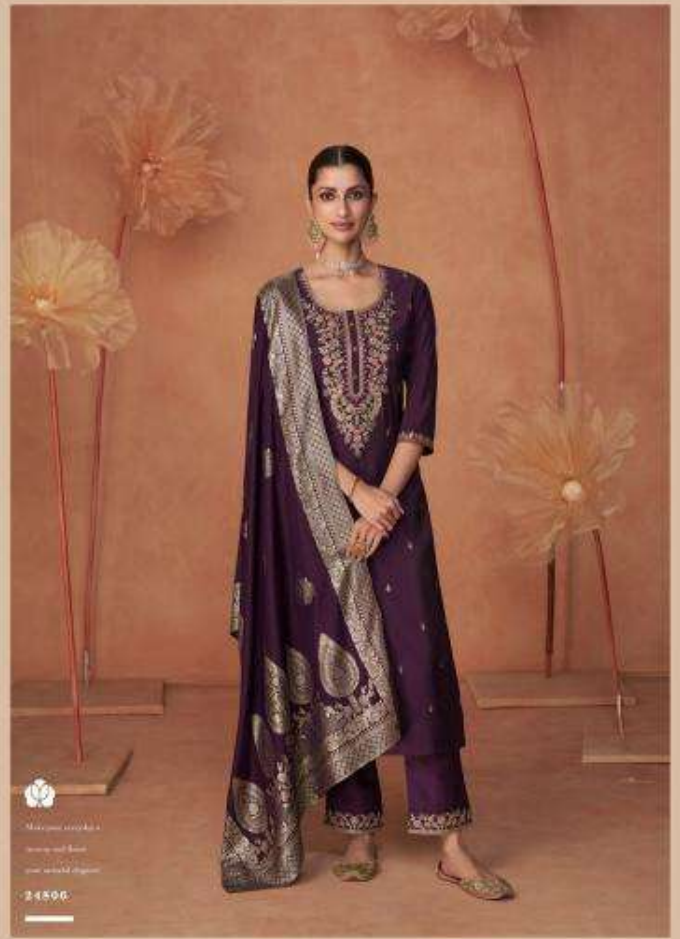
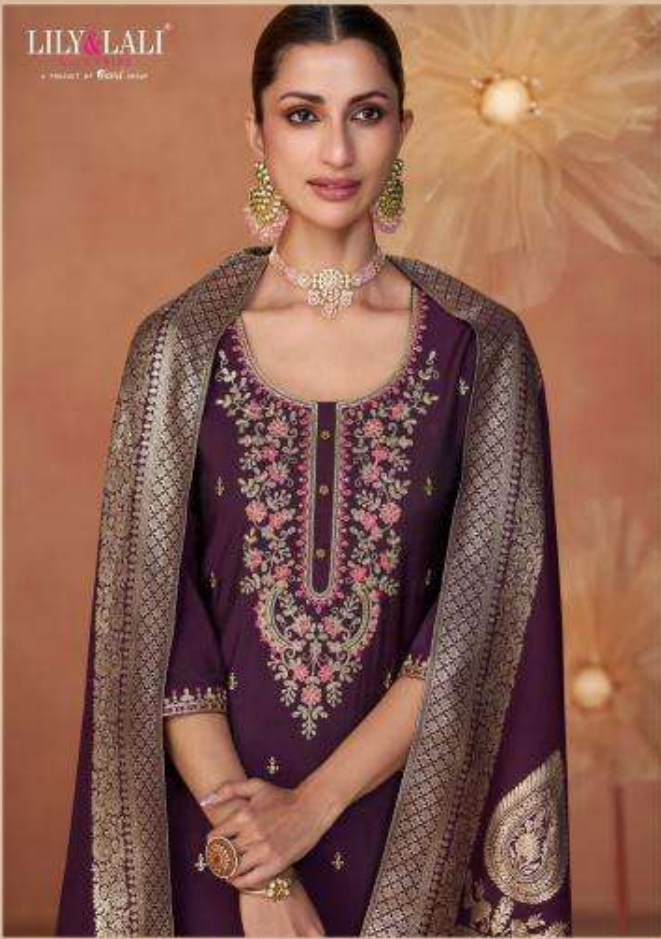
LILY & LALI
GOLD PRICE
A COLLECTION BY NISHA KUMAR



Multicolored embroidery and flowers are scattered throughout the garment, giving it a rich, textured look.

24800

LILY & LALI
A PART OF GOLD LINE



Material: 100% Cotton
Length: 110 cm
Sleeve Length: 30 cm
24900

24801



24802



24803



24804



24803



24804



LILY & LALI
DUCE PRIDE
A PRODUCT OF HIGHER GROUP
SHINY

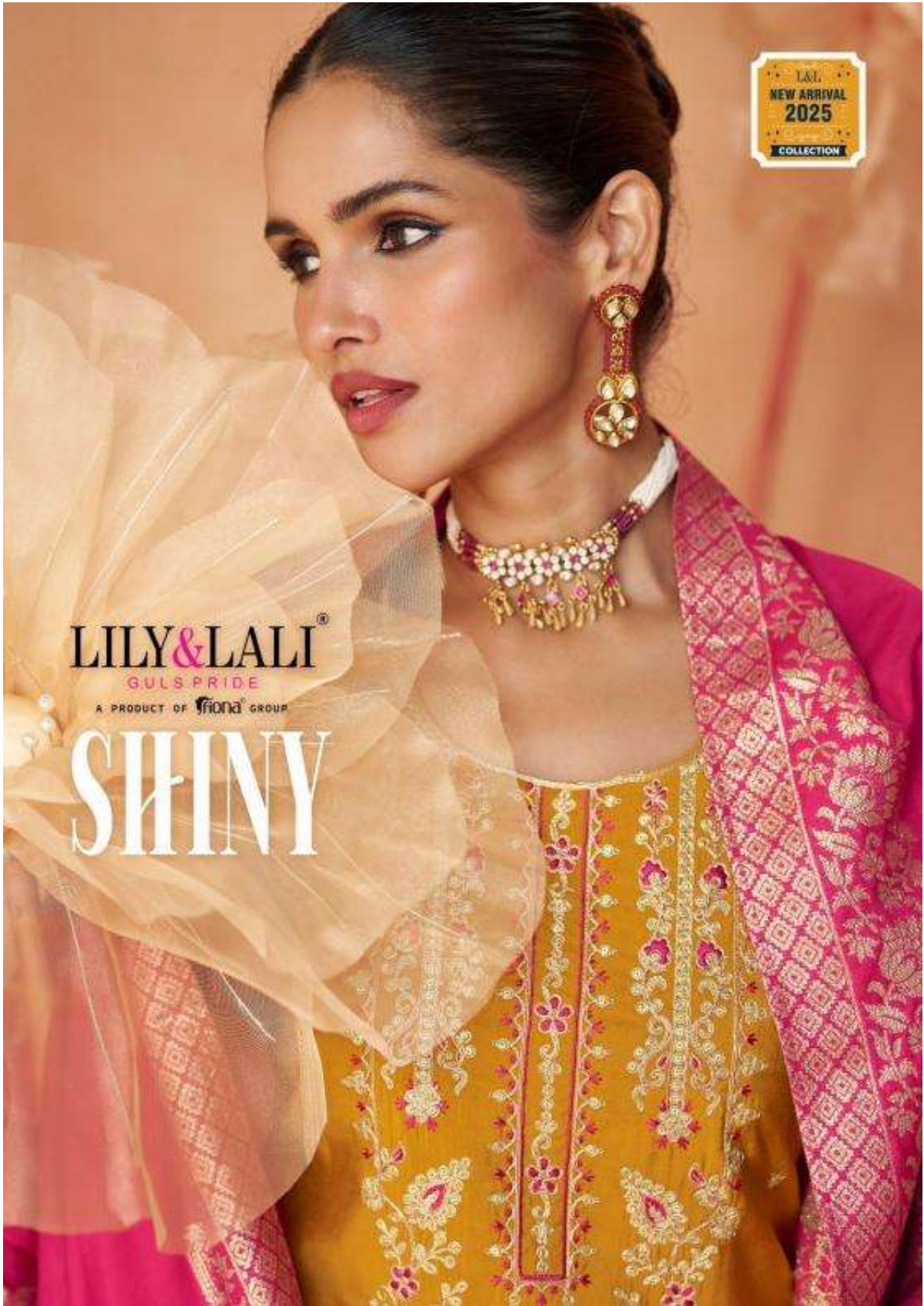


LILY & LALI[®]
PURE PRIDE
A PRODUCT OF GLENS GROUP
SHINY

L&L
NEW ARRIVAL
2025
COLLECTION

LILY & LALI[®]
GULS PRIDE
A PRODUCT OF **fiona** GROUP

SHINY



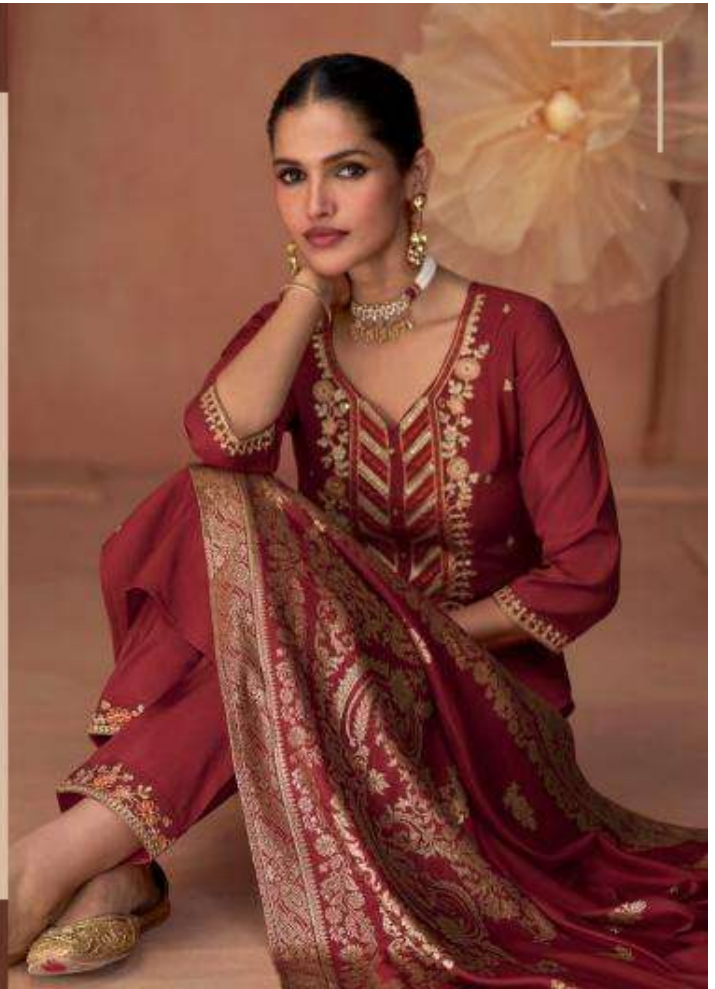
LILY&LALI[®]
GOLD PRADE
A PRODUCT OF **SHINE** GROUP

SHINY

GRACE, SOPHISTICATION AND CLASS



LILY&LALI Shiny series is all about flaunting grace, sophistication and class all together at the same time. Whether you're attending a party or wedding function, these exquisite dresses are worth draping over. With an intricate work of zari, LILY&LALI has always arrived at being nothing but the best for the customers. Our latest Shiny collection will find a touch of ethereal elegance to any occasion. We will continue to focus on our quality, excellent, cost-effective and the innovative designs making your shopping experience more enjoyable!





It's not the way you dress, it's the way you think. At LIYYALALI, we want to see you shine from your Saree to heart.

24801