



25102  
FABRIC: GRADIENT SATIN SILK  
BLOUSE: ARTISANAL HAND EMBROIDERY



25102





25101



25102



25103



25104



25105



25106



25107



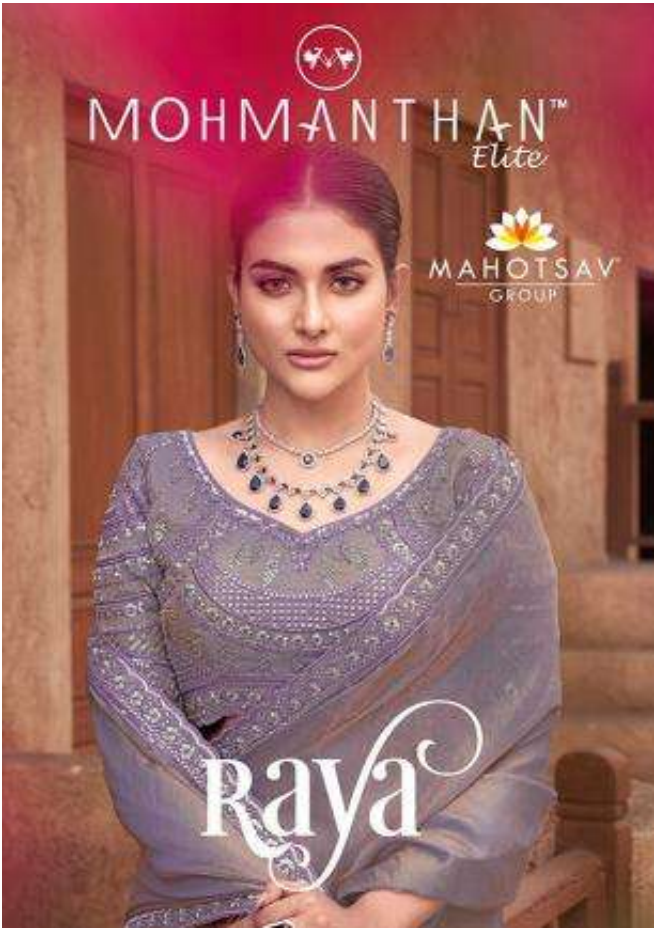
25108



25109

Raya



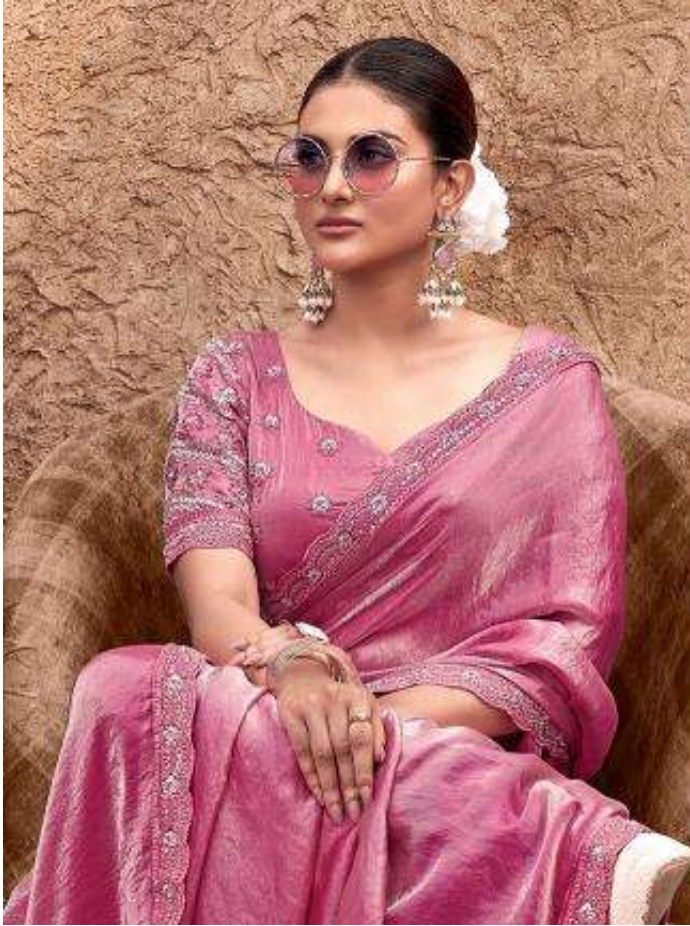


DESIGN NO	SAREE FABRIC	BLOUSE FABRIC	SAREE COLOR	BLOUSE COLOR	WORK	SAREE TYPE	BLOUSE TYPE	BLOUSE SIZE	REMARK
25101	Gradient Satin Silk	Gradient Satin Silk	Oriss	Oriss	Artisanal Hand Embroidery Work	Regular	Stitched Blouse	UP to 30 inch with a margin of 42 inches	The first wash of the garment should always be Dry-Cleaned.
25102	Gradient Satin Silk	Gradient Satin Silk	Purple	Purple	Artisanal Hand Embroidery Work	Regular	Stitched Blouse	UP to 30 inch with a margin of 42 inches	The first wash of the garment should always be Dry-Cleaned.
25103	Gradient Satin Silk	Gradient Satin Silk	Pink	Pink	Artisanal Hand Embroidery Work	Regular	Stitched Blouse	UP to 30 inch with a margin of 42 inches	The first wash of the garment should always be Dry-Cleaned.
25104	Gradient Satin Silk	Gradient Satin Silk	Orange	Orange	Artisanal Hand Embroidery Work	Regular	Stitched Blouse	UP to 30 inch with a margin of 42 inches	The first wash of the garment should always be Dry-Cleaned.
25105	Gradient Satin Silk	Gradient Satin Silk	Mustard	Mustard	Artisanal Hand Embroidery Work	Regular	Stitched Blouse	UP to 30 inch with a margin of 42 inches	The first wash of the garment should always be Dry-Cleaned.
25106	Gradient Satin Silk	Gradient Satin Silk	C. Green	C. Green	Artisanal Hand Embroidery Work	Regular	Stitched Blouse	UP to 30 inch with a margin of 42 inches	The first wash of the garment should always be Dry-Cleaned.
25107	Gradient Satin Silk	Gradient Satin Silk	Pink	Pink	Artisanal Hand Embroidery Work	Regular	Stitched Blouse	UP to 30 inch with a margin of 42 inches	The first wash of the garment should always be Dry-Cleaned.
25108	Gradient Satin Silk	Gradient Satin Silk	Light	Light	Artisanal Hand Embroidery Work	Regular	Stitched Blouse	UP to 30 inch with a margin of 42 inches	The first wash of the garment should always be Dry-Cleaned.
25109	Gradient Satin Silk	Gradient Satin Silk	Orange	Orange	Artisanal Hand Embroidery Work	Regular	Stitched Blouse	UP to 30 inch with a margin of 42 inches	The first wash of the garment should always be Dry-Cleaned.









25109  
FABRIC: GRADIENT SATIN SILK  
BLOUSE: ARTISANAL HAND EMBROIDERY



25105



26106  
FABRIC: GRADIENT SATIN SILK  
BLOUSE: ARTISANAL HAND EMBROIDERY



25103  
FABRIC: GRADIENT SATIN SILK  
BLOOSE: ARTISANAL HAND EMBROIDERY







25104  
FABRIC: GRADIENT SATIN SILK  
BLOUSE: ARTISANAL HAND EMBROIDERY





25106  
FABRIC: GRADIENT SATIN SILK  
BLOUSE: ARTISANAL HAND EMBROIDERY



25101  
FABRIC: GRADIENT SATIN SILK  
BLOUSE: ARTISANAL HAND EMBROIDERY



25103