



HF-101-A

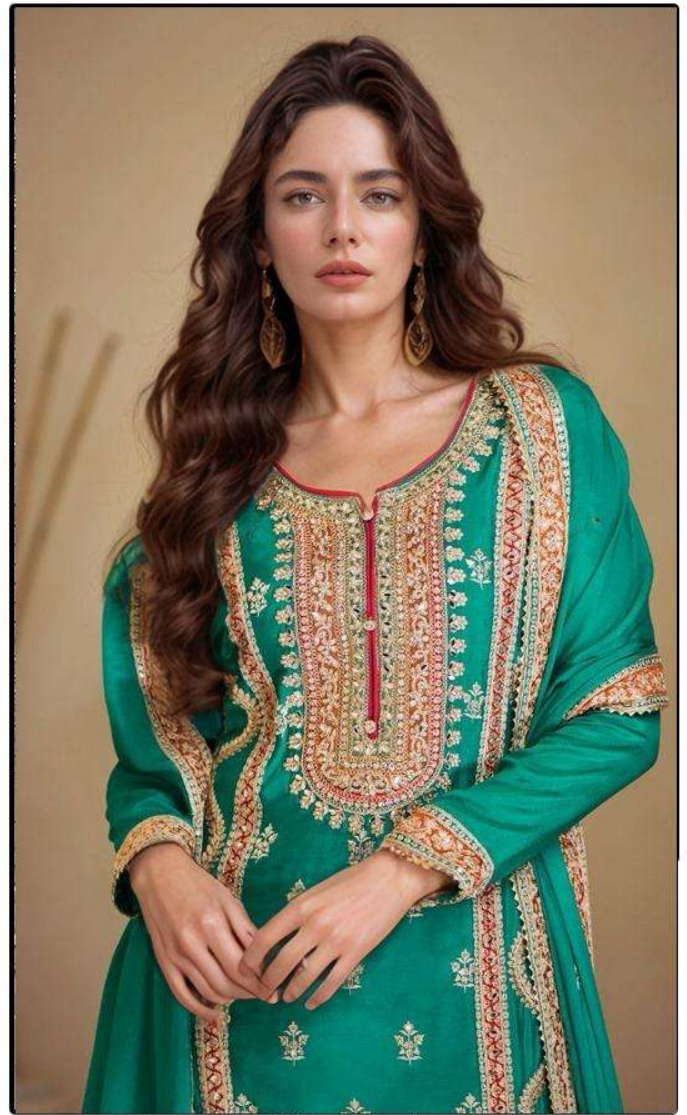
Top :- Chinon Silk With Embroidery
Bottom :- Chinon Silk
Dupatta :- Chinon Silk



HOOR TEX

CARE INSTRUCTIONS

DRY CLEAN RECOMMENDED
DO NOT USE ANY TYPE OF BLEACH OR STAIN REMOVING CHEMICALS
DO NOT OVER EXPOSE DAMP FABRIC TO STRONG SUNLIGHT
IRON AT MODERATE TEMPERATURE



HF-101-A

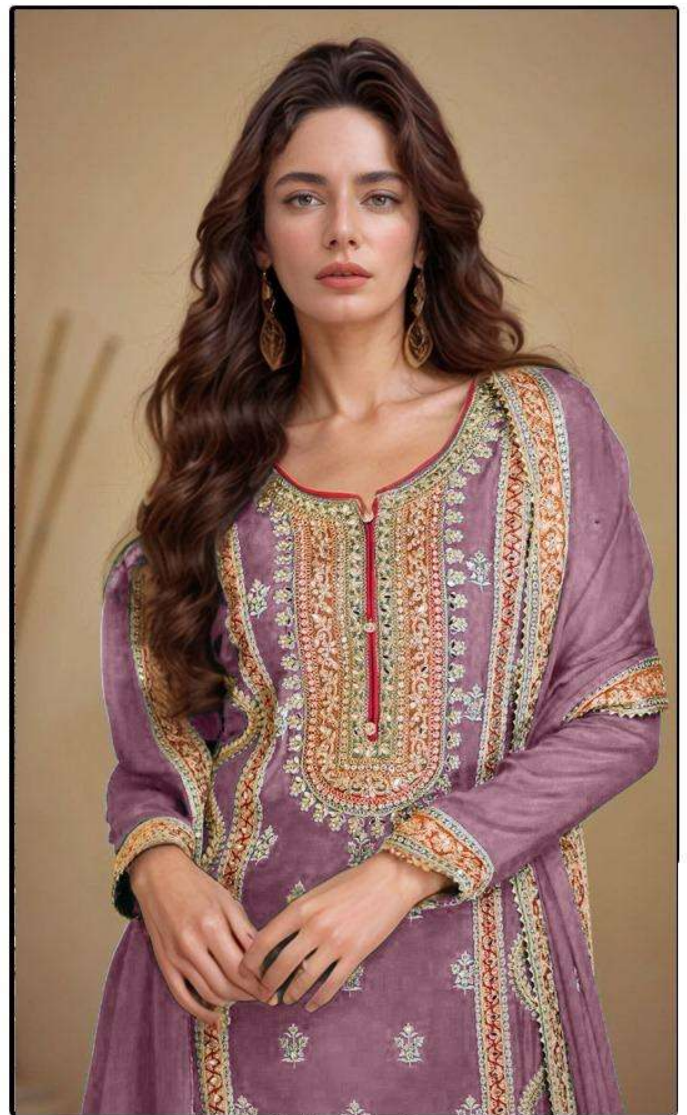
Top :- Chinon Silk With Embroidery
Bottom :- Chinon Silk
Dupatta :- Chinon Silk



HOOR TEX

CARE INSTRUCTIONS

DRY CLEAN RECOMMENDED
DO NOT USE ANY TYPE OF BLEACH OR STAIN REMOVING CHEMICALS
DO NOT OVER EXPOSE DAMP FABRIC TO STRONG SUNLIGHT
IRON AT MODERATE TEMPERATURE



HF-101-B

Top :- Chinon Silk With Embroidery
Bottom :- Chinon Silk
Dupatta :- Chinon Silk



HOOR TEX

CARE INSTRUCTIONS

DRY CLEAN RECOMMENDED
DO NOT USE ANY TYPE OF BLEACH OR STAIN REMOVING CHEMICALS
DO NOT OVER EXPOSE DAMP FABRIC TO STRONG SUNLIGHT
IRON AT MODERATE TEMPERATURE



HF-101-C

Top :- Chinon Silk With Embroidery

Bottom :- Chinon Silk

Dupatta :- Chinon Silk



HOOR TEX

CARE INSTRUCTIONS

DRY CLEAN RECOMMENDED

DO NOT USE ANY TYPE OF BLEACH OR STAIN REMOVING CHEMICALS

DO NOT OVER EXPOSE DAMP FABRIC TO STRONG SUNLIGHT

IRON AT MODERATE TEMPERATURE









HF-101-A



HF-101-B



HF-101-C



HOOR TEX
Hoor The Fashion Noor