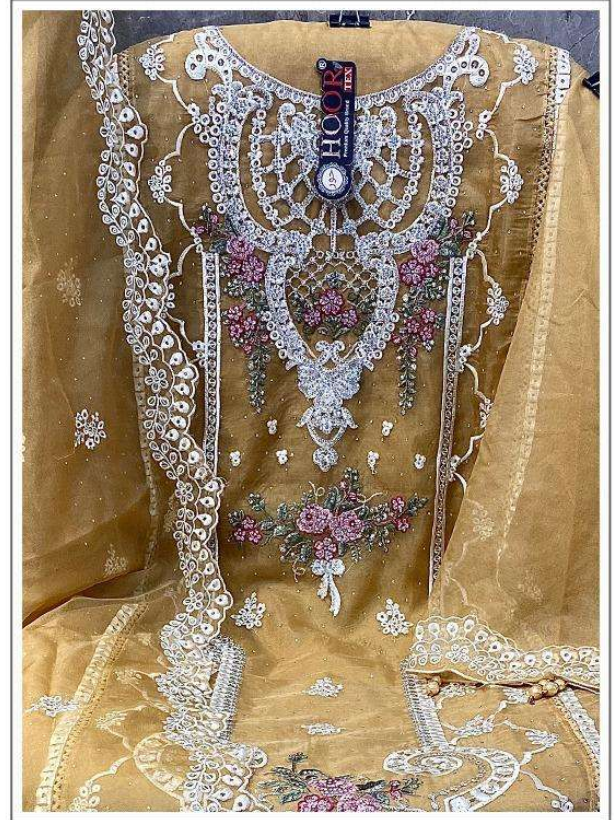




HOOR TEX



OR-50 A

Top :- Heavy Organza With Khatli Work

Bottom/Inner :-Santoon

Dupatta :- Heavy Organza



Ⓢ DRY CLEAN ONLY.
ⓧ DO NOT USE ANY BLEACH OR STAIN REMOVING CHEMICAL.
🔪 IRON THE FABRIC AT MODERATE TEMPERATURE.



OR-50 A



OR-50 B



OR-50 C



OR-50 D



HOOR TEX











HOOR TEX



OR-50 D

Top :- Heavy Organza With Khatli Work

Bottom/Inner :-Santoon

Dupatta :- Heavy Organza



- Ⓢ DRY CLEAN ONLY.
- ⓧ DO NOT USE ANY BLEACH OR STAIN REMOVING CHEMICAL.
- Ⓜ IRON THE FABRIC AT MODERATE TEMPERATURE.



HOOR TEX



OR-50 C

Top :- Heavy Organza With Khatli Work

Bottom/Inner :-Santoon

Dupatta :- Heavy Organza



☎ DRY CLEAN ONLY.
⚠ DO NOT USE ANY BLEACH OR STAIN REMOVING CHEMICAL.
🔪 IRON THE FABRIC AT MODERATE TEMPERATURE.



HOOR TEX



OR-50 B

Top :- Heavy Organza With Khatli Work

Bottom/Inner :-Santoon

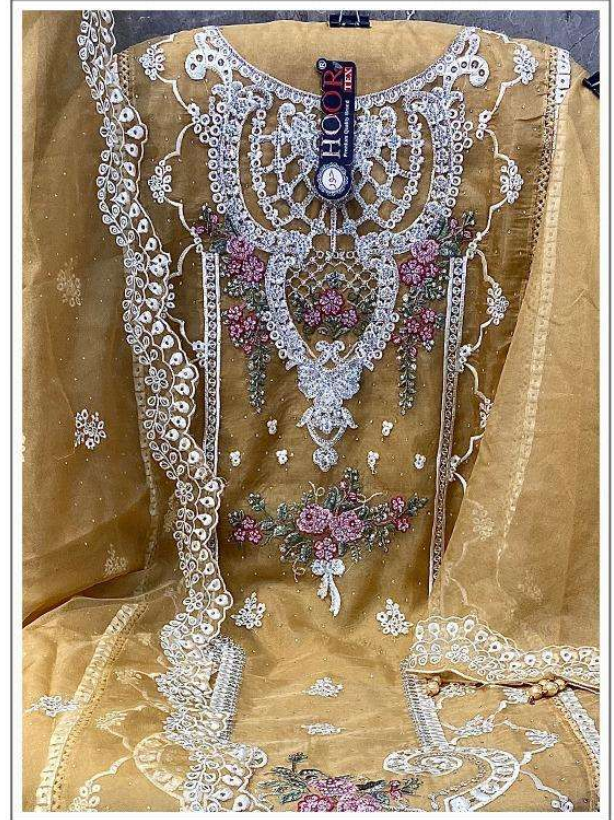
Dupatta :- Heavy Organza



☎ DRY CLEAN ONLY.
⚠ DO NOT USE ANY BLEACH OR STAIN REMOVING CHEMICAL.
🔪 IRON THE FABRIC AT MODERATE TEMPERATURE.



HOOR TEX



OR-50 A

Top :- Heavy Organza With Khatli Work

Bottom/Inner :-Santoon

Dupatta :- Heavy Organza



☎ DRY CLEAN ONLY.
⚠ DO NOT USE ANY BLEACH OR STAIN REMOVING CHEMICAL.
🔪 IRON THE FABRIC AT MODERATE TEMPERATURE.