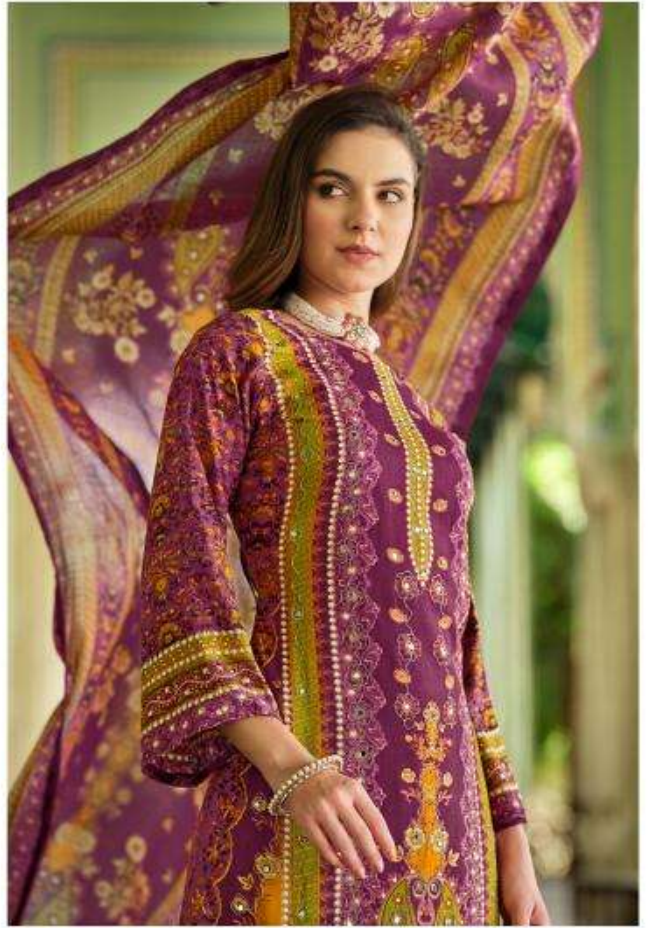


Belliza®  
Designer Studio

# SHAHEEN

VOL-02

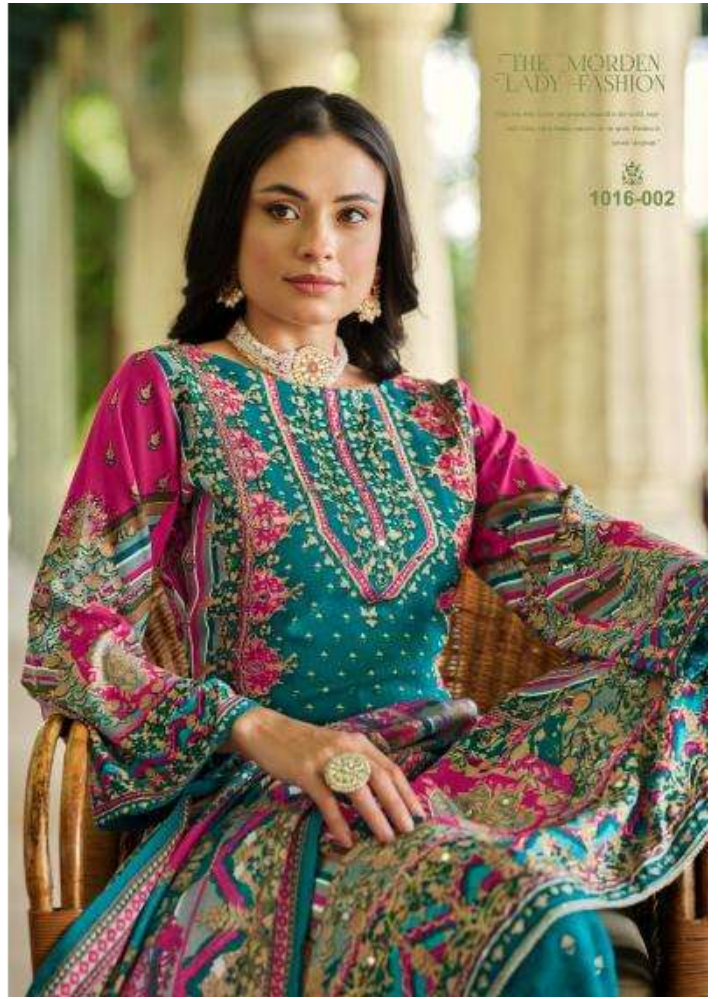






SHAHEEN  
VOL-02

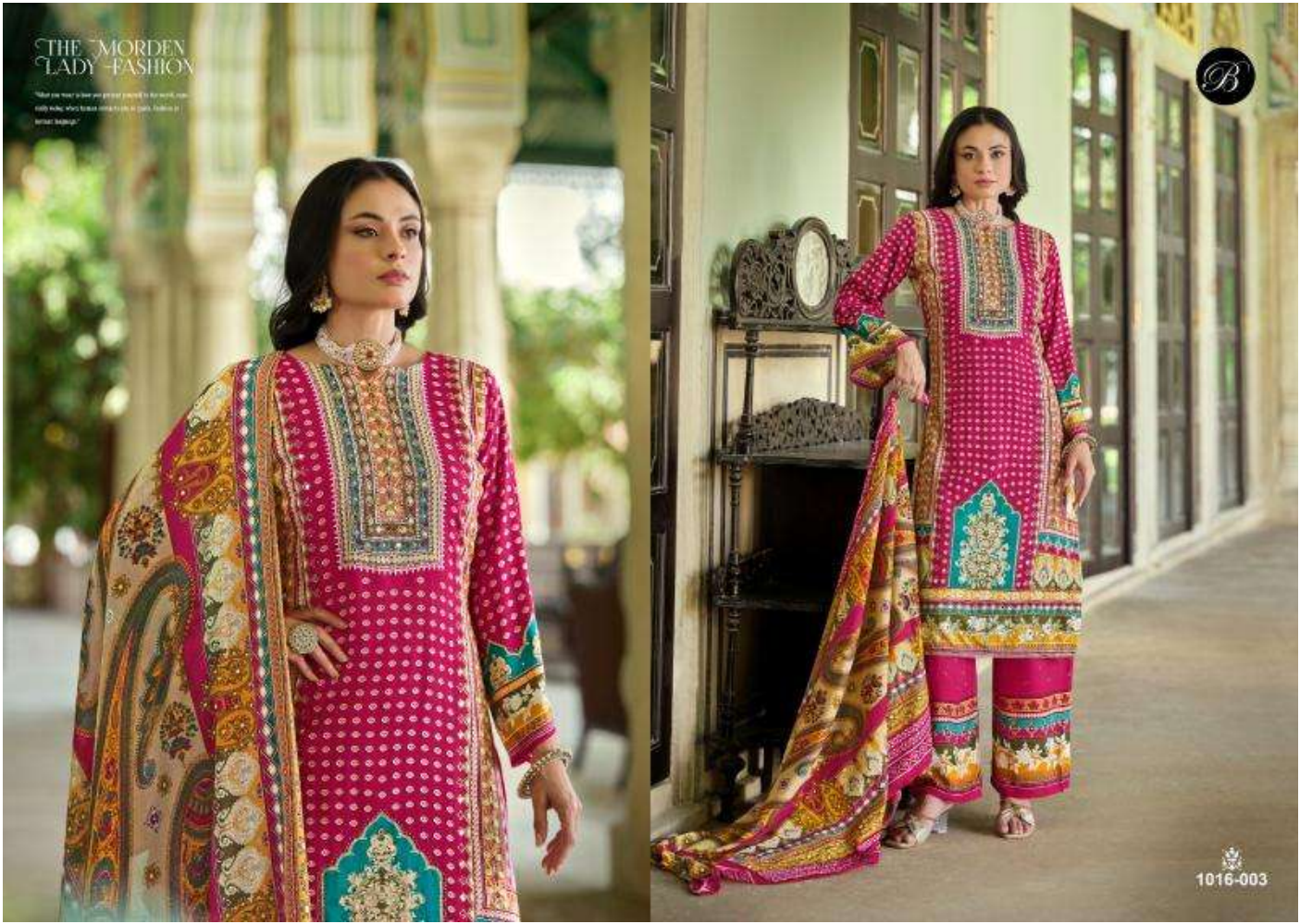
"You are what you eat, you are what you wear, you are what you do, you are what you say, you are what you think, you are what you feel, you are what you are."



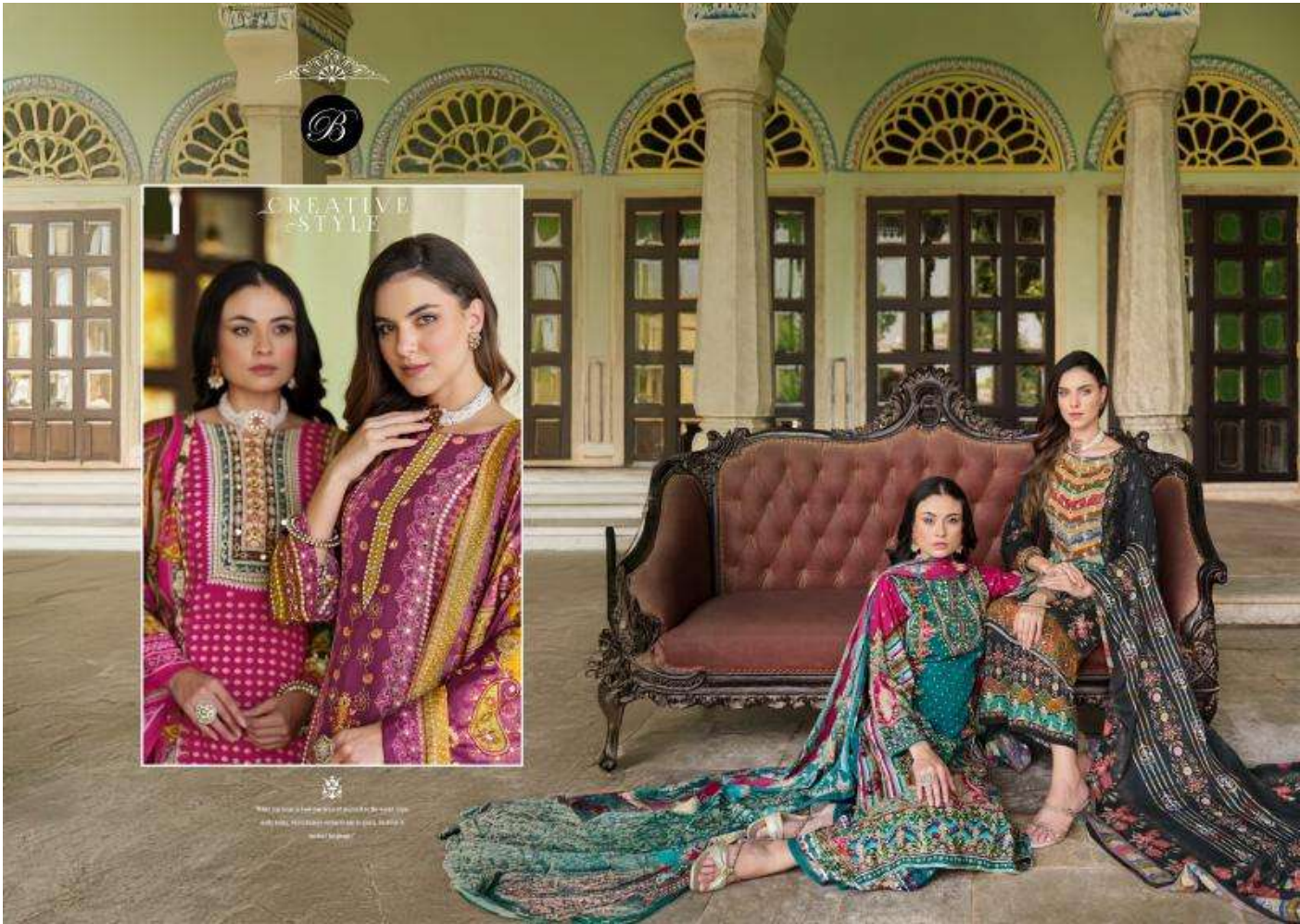


THE MORDEN  
LADY - FASHION

"What you wear" is how you present yourself to the world, and  
only when you know how to use it you can fashion it to  
your advantage."



1016-003



B

CREATIVE  
STYLE

WWW.BOUTIQUEBYB.COM  
AND FOLLOW US ON INSTAGRAM @BOUTIQUEBYB







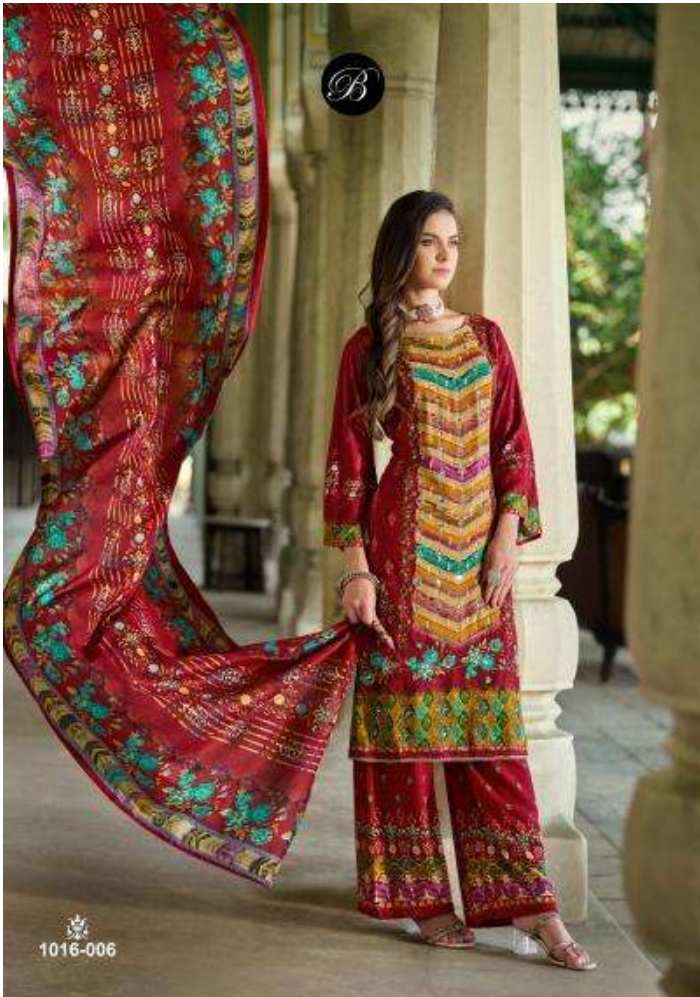
B



DIFFERENT  
DIRCTION

"What you wear is how you present yourself to the world, and  
it's only when you know your style that you can truly  
be who you are."

1016-007







# SHAHEEN

VOL-02



1016-001



1016-002



1016-003



1016-004



1016-005



1016-006



1016-007



1016-008

Belliza®  
Designer Studio

SHAHEEN  
VOL-02

