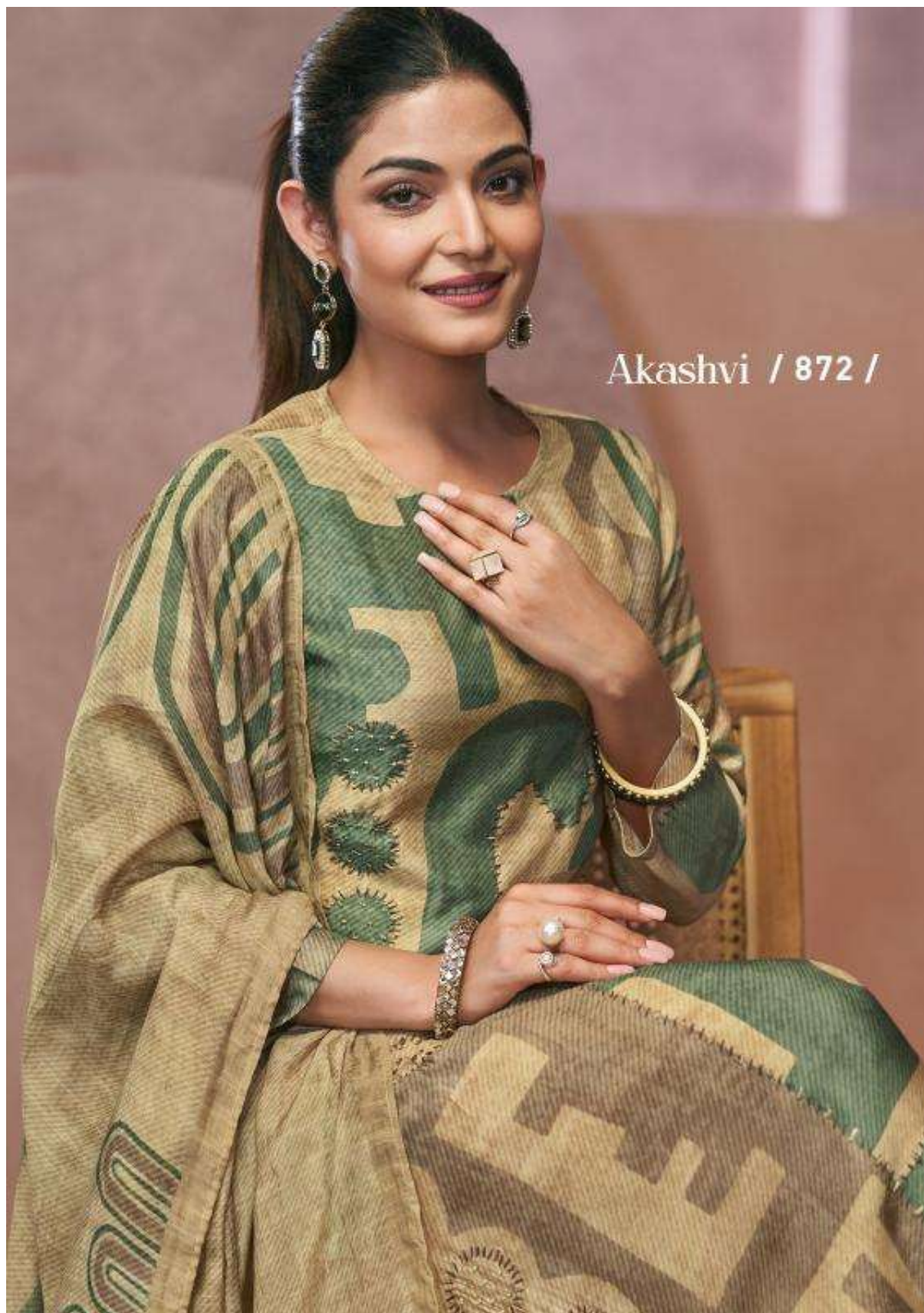


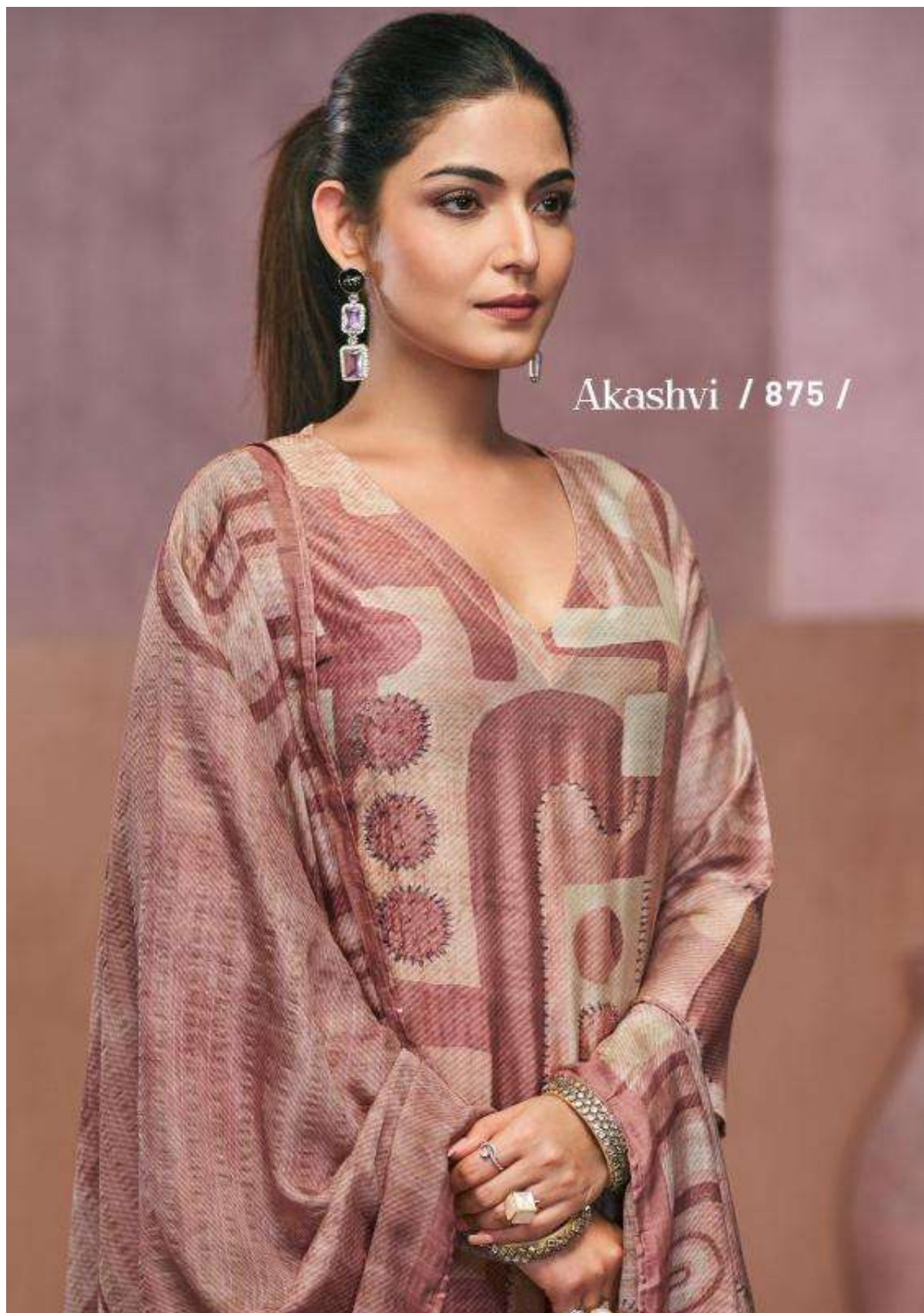
A woman with dark hair in a ponytail is seated, looking to her right. She is wearing a long-sleeved dress with a green and gold geometric pattern. The dress has a wide, draped shawl-like collar. She is also wearing large, ornate earrings, a bracelet, and several rings. The background is a soft, out-of-focus pinkish-brown.

T and M

Akashvi







T. and N.



846



872



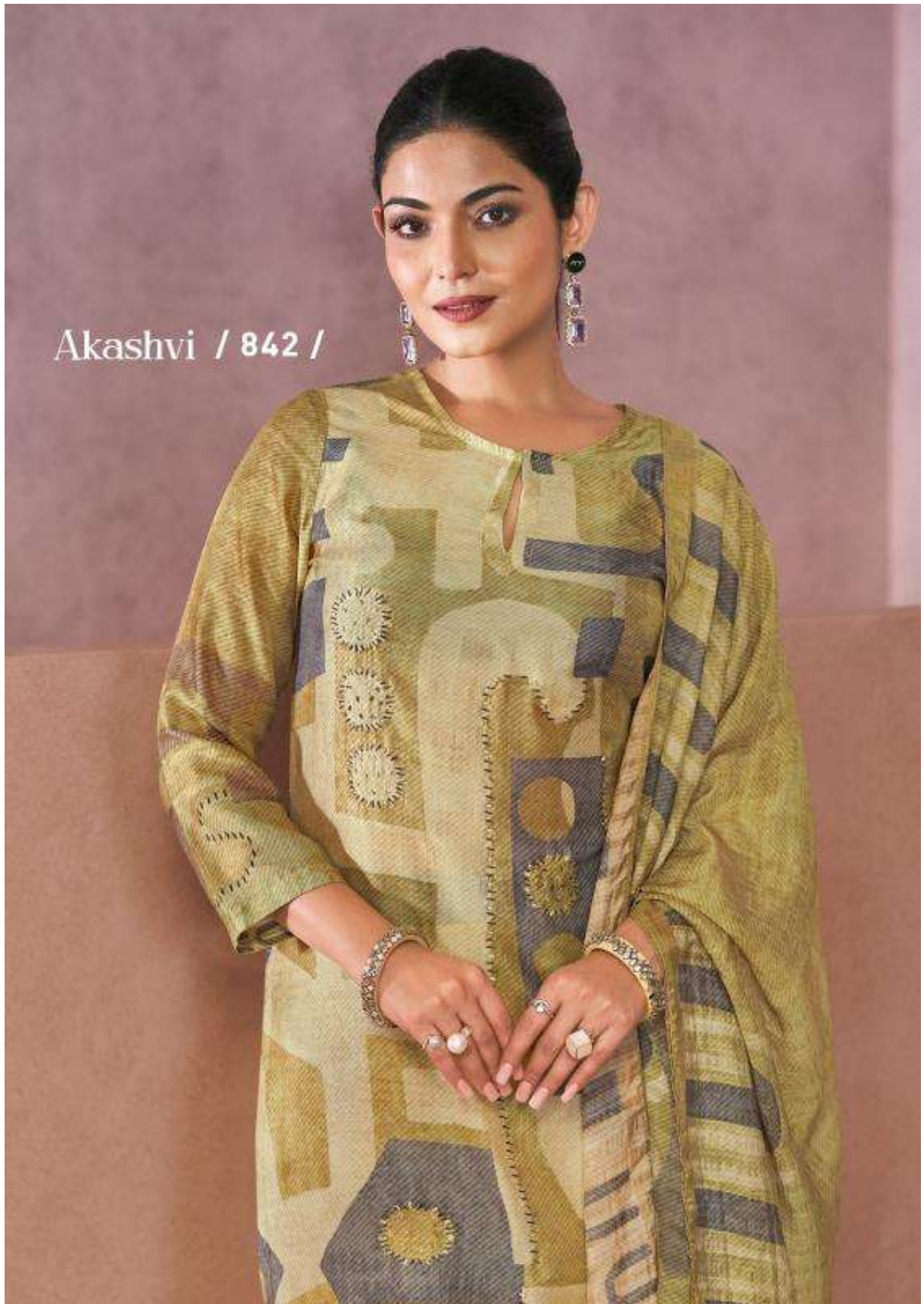




Akashvi / 846 /



Akashvi / 842 /



Akashvi



875

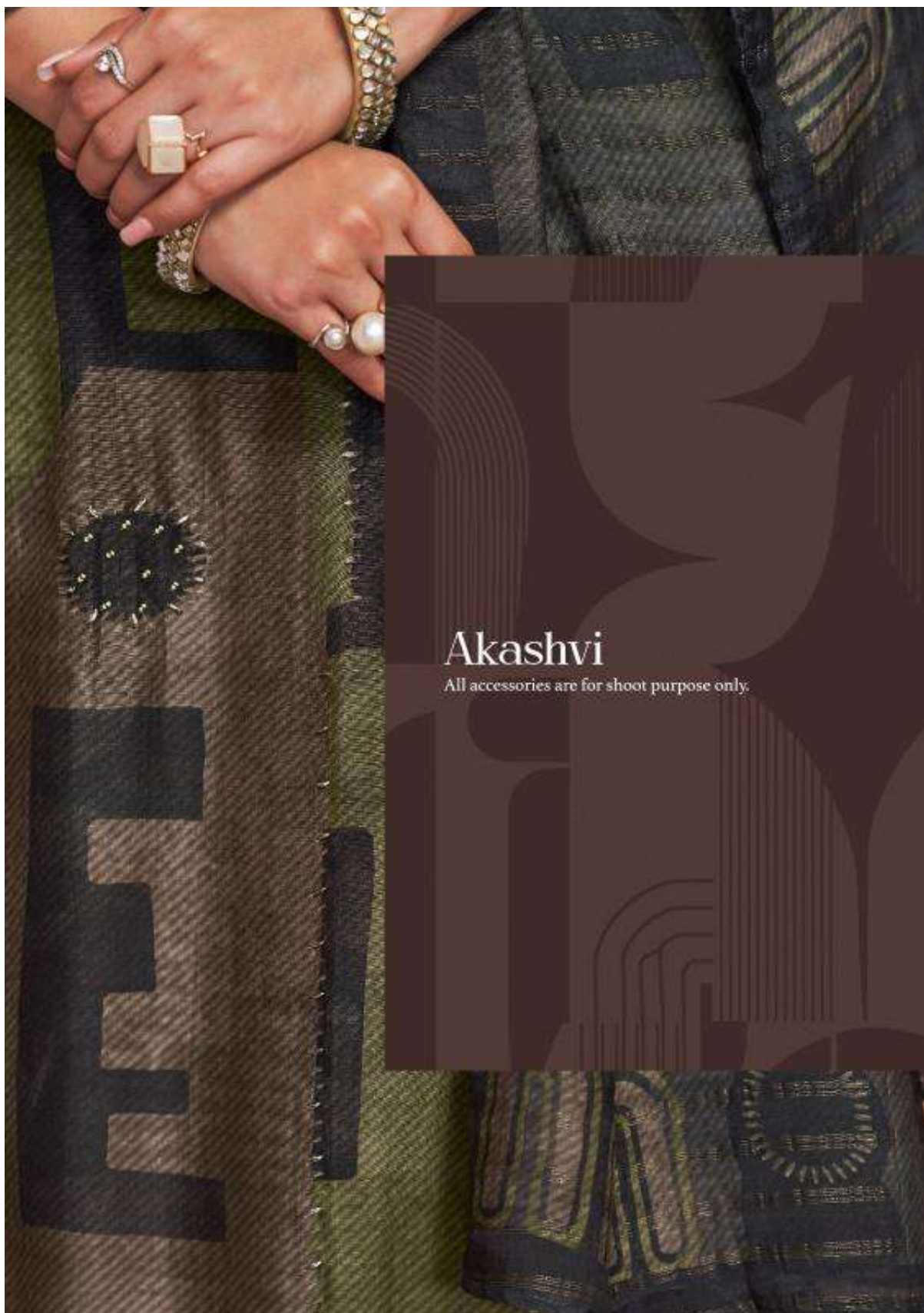


842

A woman with dark hair in a ponytail is seated, looking to her right with a smile. She is wearing a long-sleeved dress with a green and gold geometric pattern, and a matching shawl draped over her shoulders. She is adorned with large square earrings, a bracelet, and several rings. The background is a soft, out-of-focus pinkish-brown.

T and M

Akashvi



Akashvi

All accessories are for shoot purpose only.

A woman with dark hair in a ponytail is seated, looking to her right with a slight smile. She is wearing a long-sleeved dress with a complex geometric and floral pattern in shades of green, gold, and brown. The dress has a draped shawl-like section over her left shoulder. She is adorned with large square earrings, a bracelet, and several rings. The background is a soft, out-of-focus pinkish-brown.

T and M

Akashvi

