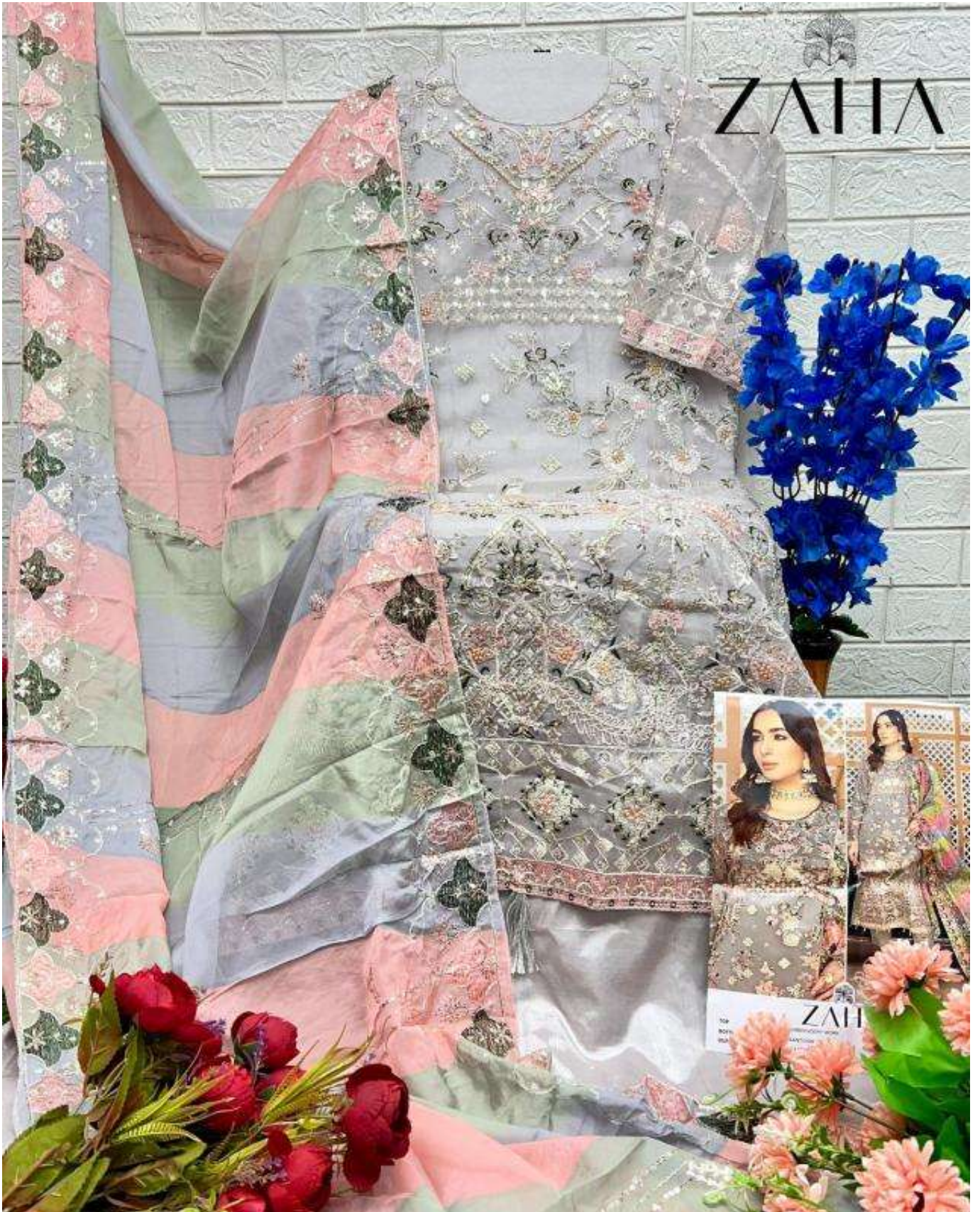




ZAHA
ABEELA





TOP:
BOTH:
DUP:
ZAH
EMBROIDERY WORK
SANTOON







ZAHN
TOP ORGANZA EMBROIDERY
BOTTOM SANTOCCI
DUPATTA ORGANZA EMBROIDERY





ABEELA

ZAHA

TOP
ORGANZA EMBROIDERY WORK

BOTTOM
SANTOON

DUPATTA
ORGANZA EMBROIDERY



10362-A

10362-B



10362-C

10362-D



ABEELA

ZAHA

D.No.10362-B

TOP

ORGANZA EMBROIDERY WORK

BOTTOM

SANTOON

DUPATTA

ORGANZA EMBROIDERY

CARE INSTRUCTIONS

- ☑ Dry clean only
- ⚠ Do not use any bleach or stain removing chemical.
- ☑ Iron the fabric at moderate temperature
- ☒ Do not dry fabric in direct sunlight



ABEELA

ZAHA

D.No.10362-D

TOP

ORGANZA EMBROIDERY WORK

BOTTOM

SANTOON

DUPATTA

ORGANZA EMBROIDERY

CARE INSTRUCTIONS

- ☑ Dry clean only
- ⚠ Do not use any bleach or stain removing chemical.
- ☑ Iron the fabric at moderate temperature
- ☒ Do not dry fabric in direct sunlight



ZAHA
ABEELA



ABEELA

ZAHA

D.No.10362-C

TOP

ORGANZA EMBROIDERY WORK

BOTTOM

SANTOON

DUPATTA

ORGANZA EMBROIDERY

CARE INSTRUCTIONS

- ☑ Dry clean only
- ⚠ Do not use any bleach or stain removing chemical.
- ☑ Iron the fabric at moderate temperature
- ☒ Do not dry fabric in direct sunlight



ABEELA

ZAHA

D.No.10362-A

TOP

ORGANZA EMBROIDERY WORK

BOTTOM

SANTOON

DUPATTA

ORGANZA EMBROIDERY

CARE INSTRUCTIONS

- ☐ Dry clean only
- ⚠ Do not use any bleach or stain removing chemical.
- ☐ Iron the fabric at moderate temperature
- ☒ Do not dry fabric in direct sunlight