

A woman with long brown hair is the central figure, wearing a vibrant yellow and green patterned ensemble. She stands in a rustic, arched niche. The background is a warm, textured wall. To her right, several woven baskets and large, light-colored ceramic pots are arranged on a ledge. To her left, a basket of dried grasses sits on the floor. The overall aesthetic is traditional and earthy.

MAYUR
CREATION

GUZARISH

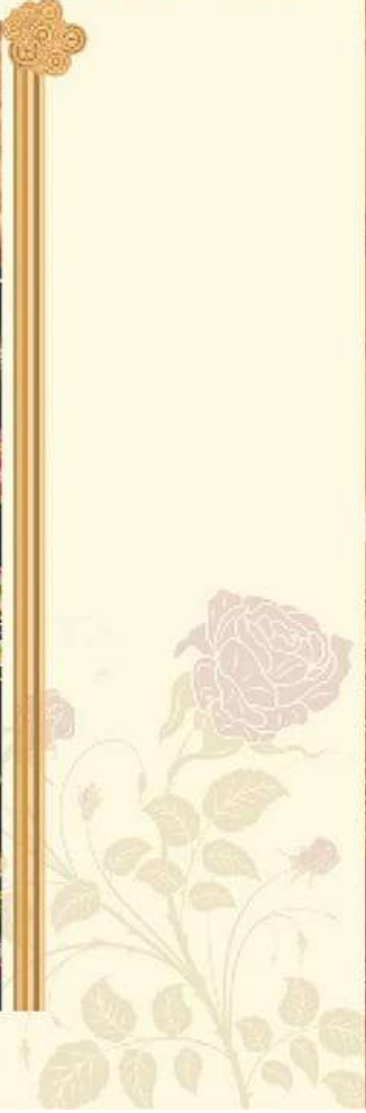
Vol-3



MAYUR
CREATION

GUZARISH

Vol-3



MAYUR
CREATION

GUZARISH
3001

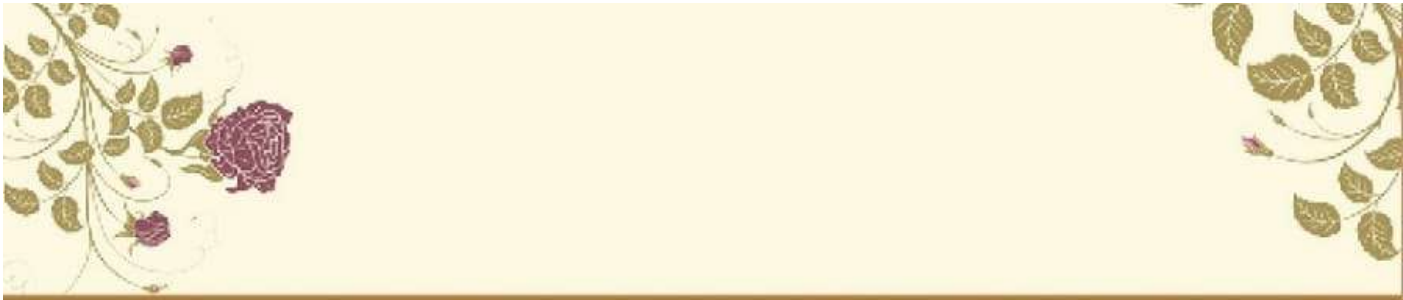


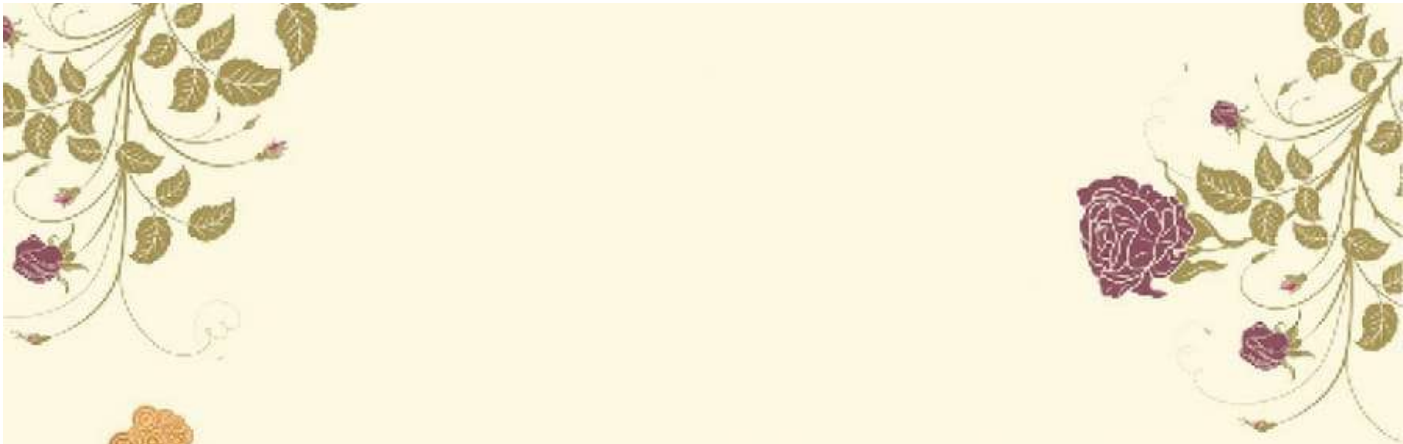
MAYUR
CREATION

GUZARISH

3004







MAYUR
CREATION

GUZARISH
3005





MAYUR
CREATION

GUZARISH

3003





MAYUR
CREATION

GUZARISH
3002



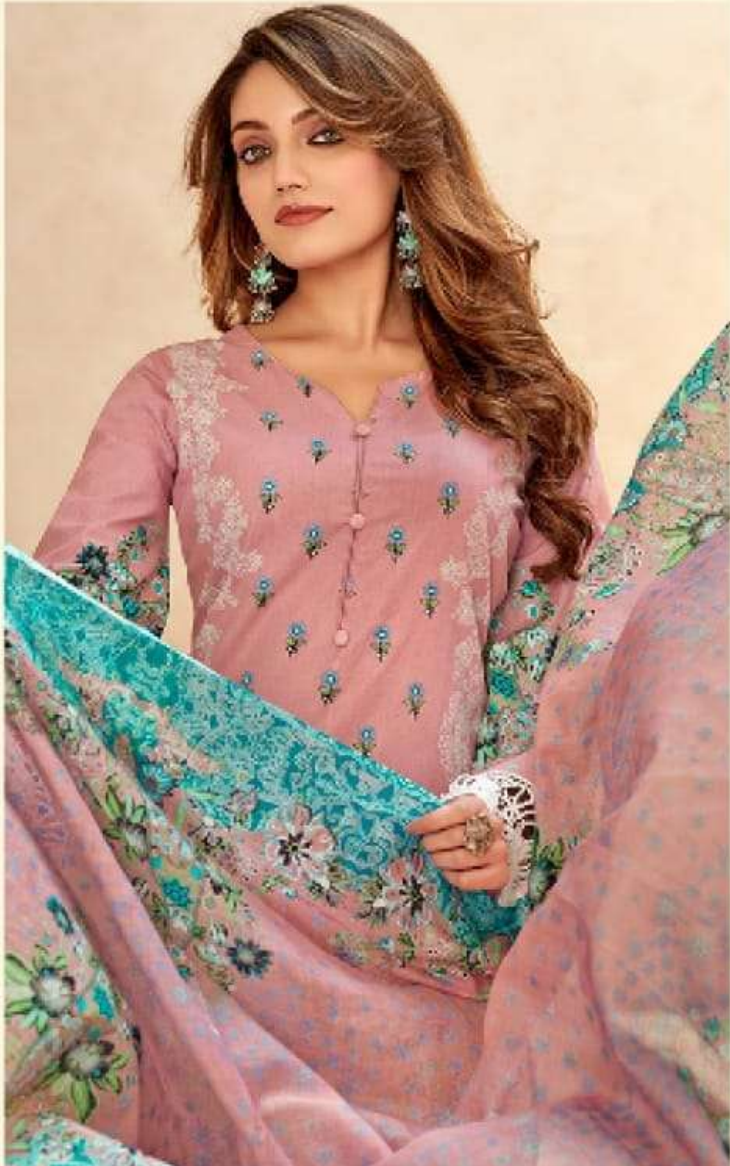


MAYUR
CREATION

GUZARISH

3008





MAYUR
CREATION

GUZARISH
3007



MAYUR
CREATION

GUZARISH

3006







3001



3002



3003



3004



3005



3006



3007



3008



MAYUR
CREATION

GUZARISH
Vol-3