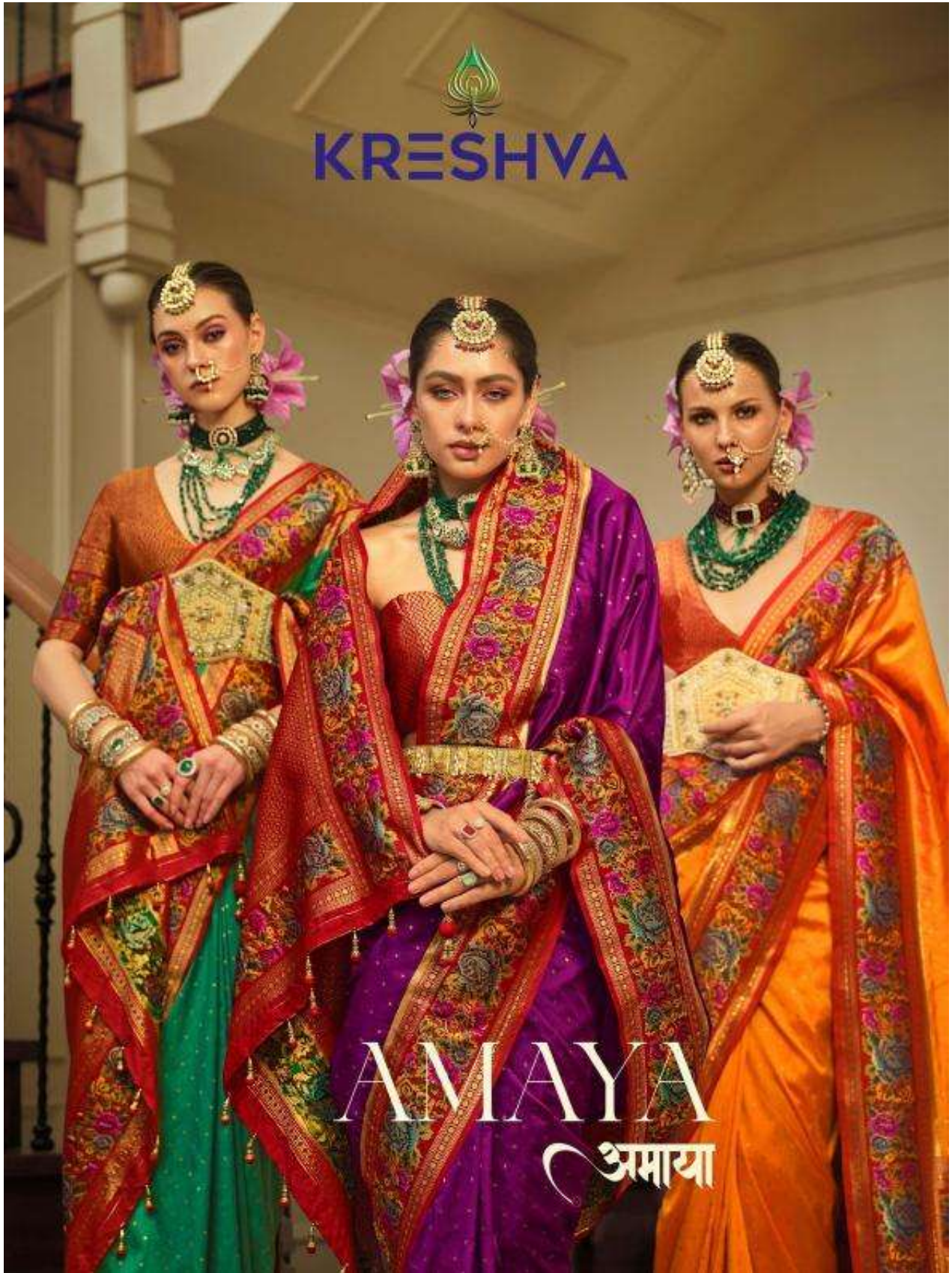




KRESHVA



AMAYA
अमाया



KRESHVA

K-451


KRESHVA



© 2014 Kreshva. All rights reserved. No part of this publication may be reproduced, stored in a retrieval system, or transmitted, in any form or by any means, electronic, mechanical, photocopying, recording, or by any information storage and retrieval system, without the prior written permission of Kreshva.

K-451




KRESHVA



© 2018 Kreshva. All rights reserved. No part of this publication may be reproduced, stored in a retrieval system, or transmitted, in any form or by any means, electronic, mechanical, photocopying, recording, or by any information storage and retrieval system, without the prior written permission of Kreshva.

K-452

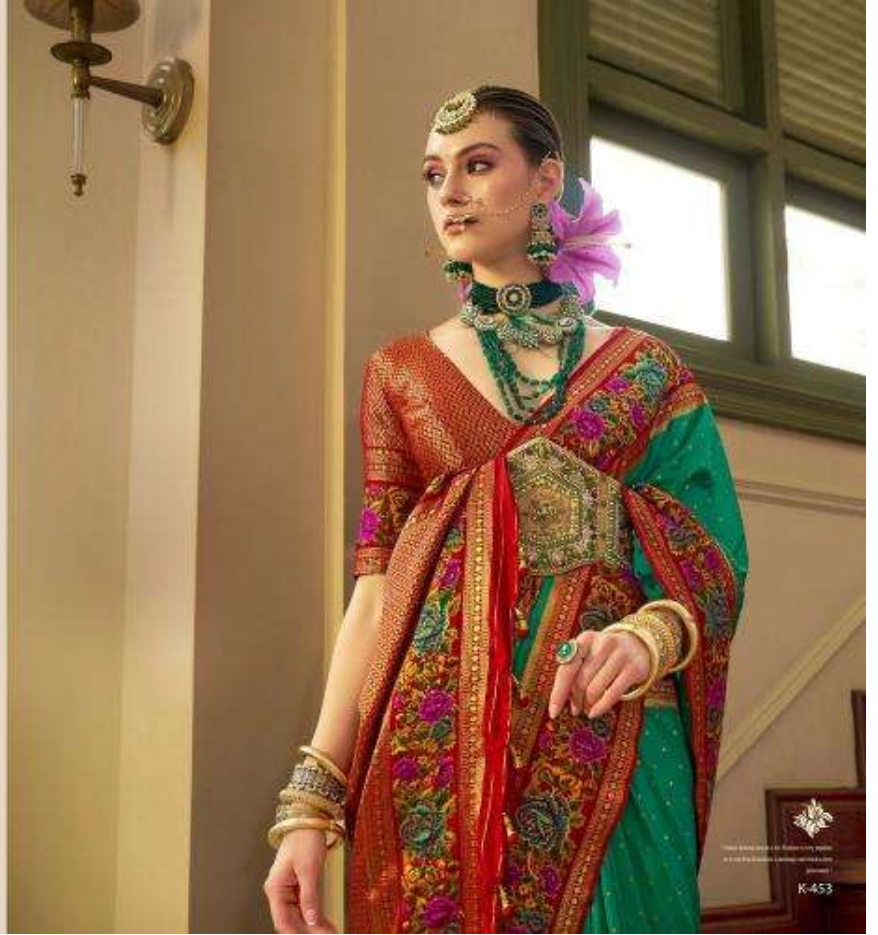


KRESHNA



K-453


KRESHVA





K-445



K-446



K-447



K-448



K-449



K-450



K-451



K-452



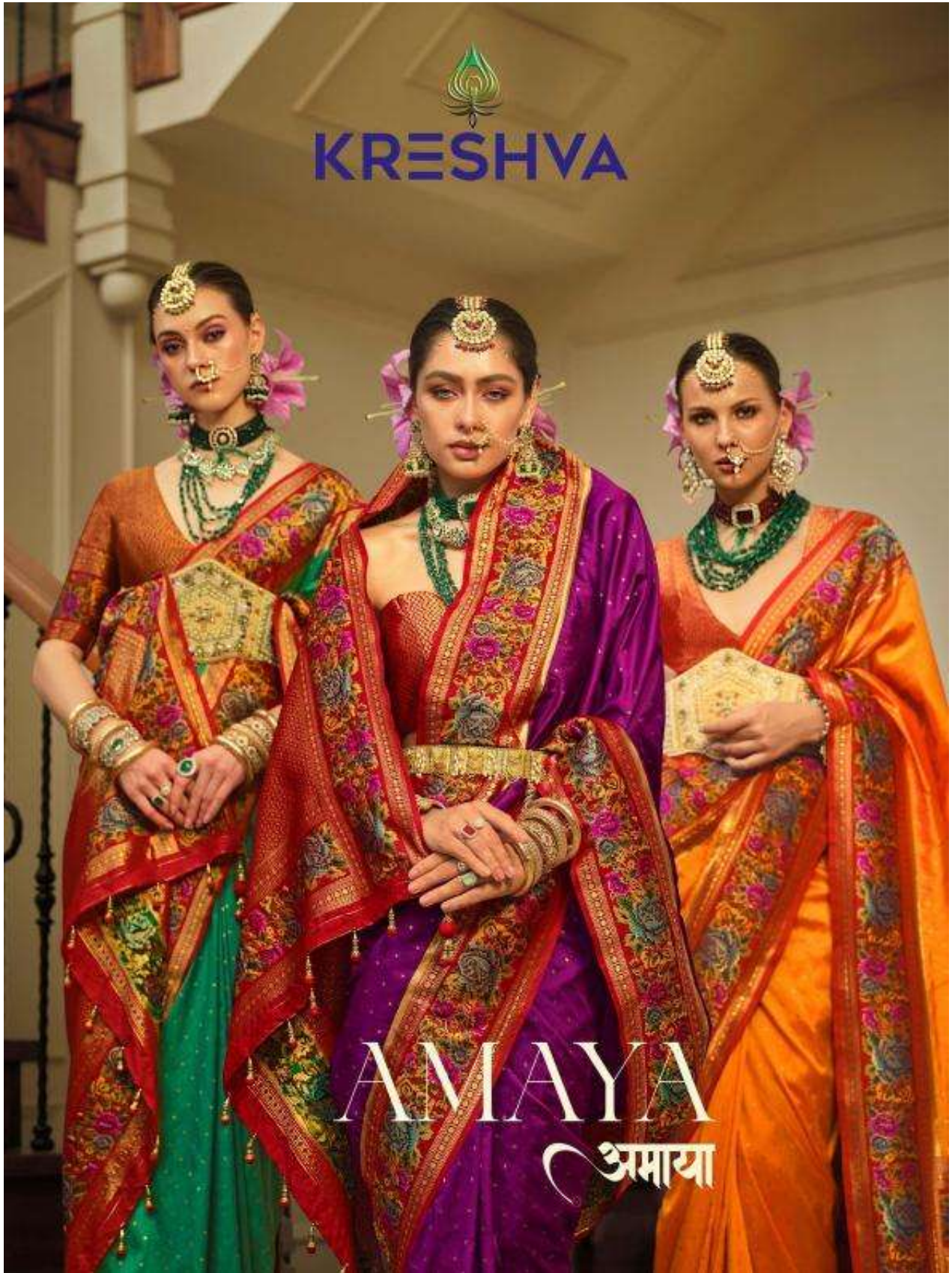
K-453

KRESHVA

AMAYA
अमाया



KRESHVA



AMAYA
अमाया








KRESHVA



THE GLAMOUR
© 2024 Kreshva Pvt. Ltd. All rights reserved. Kreshva is a registered trademark of Kreshva Pvt. Ltd.

K-445






KRESHVA




K-446



KRESHVA

A NEW
FASHION
AFFAIR





KRESHVA

DIFFERENT
COLLECTION

K-447






KRESHVA



**THIS SEASON
MAKE DIFFERENT**

© 2018 Kreshva. All rights reserved. Kreshva is a registered trademark of Kreshva. All other trademarks are the property of their respective owners.

K-448


KRESHVA



K-446


"The first choice of the world. The finest fabric and craftsmanship."







KRESHVA



"This collection is a tribute to the rich heritage of Indian fashion and jewelry, showcasing the finest craftsmanship and traditional motifs."

The image is a promotional graphic for the brand KRESHVA. It features a central photograph of a woman in traditional Indian attire, heavily adorned with jewelry, sitting in a room. The brand name "KRESHVA" is prominently displayed at the top. The background of the graphic is a light beige color with large, faint letters "D", "I", "S", "I", "N", "G" visible. A small decorative element is located below the central image, accompanied by a line of small text.



