



ALK[®]

AL KHUSHBU[®]

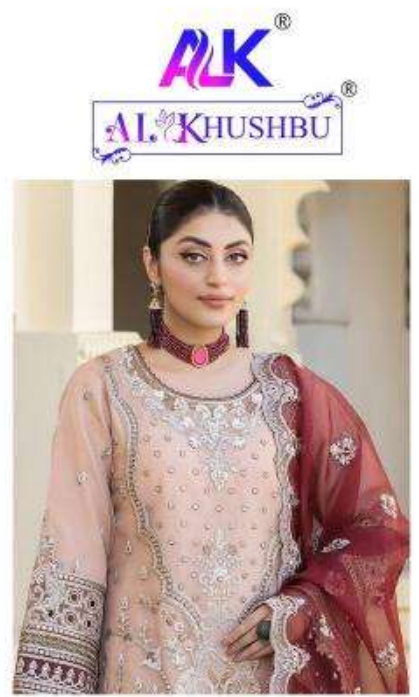
AGHA NOOR



ALK[®]

AL KHUSHBU[®]

AGHA NOOR



ALK[®]
AL KHUSHBU[®]

ALK-6003

- TOP** Fox Georgette with Heavy Embroidery (cut 2.50)
- BOTTOM-INNER** Dull Santoon (cut 4.25)
- DUPATTA** Fox Georgette with Heavy Embroidery (cut 2.40)

CARE INSTRUCTIONS

- ☐ Dry clean only
- ☒ Do not use any bleach or stain removing chemical
- ☒ Iron the fabric at moderate temperature
- ☒ Do not dry fabric in direct sunlight



ALK[®]
AL KHUSHBU[®]



ALK-6004

- TOP** Fox Georgette with Heavy Embroidery (cut 2.50)
- BOTTOM-INNER** Dull Santoon (cut 4.25)
- DUPATTA** Fox Georgette with Heavy Embroidery (cut 2.40)

CARE INSTRUCTIONS

- ☐ Dry clean only
- ⚠ Do not use any bleach or stain removing chemical
- ☐ Iron the fabric at moderate temperature
- ☒ Do not dry fabric in direct sunlight



ALK-6005

- TOP** Fox Georgette with Heavy Embroidery (cut 2.50)
- BOTTOM-INNER** Dull Santoon (cut 4.25)
- DUPATTA** Fox Georgette with Heavy Embroidery (cut 2.40)

CARE INSTRUCTIONS

- Ⓛ Dry clean only
- Ⓜ Do not use any bleach or stain removing chemical
- Ⓜ Iron the fabric at moderate temperature
- Ⓧ Do not dry fabric in direct sunlight

AGHA NOOR

ALK[®]

AL KHUSHBU[®]



ALK-6003



ALK-6004



ALK-6005













AK

AL KHUSHBU





