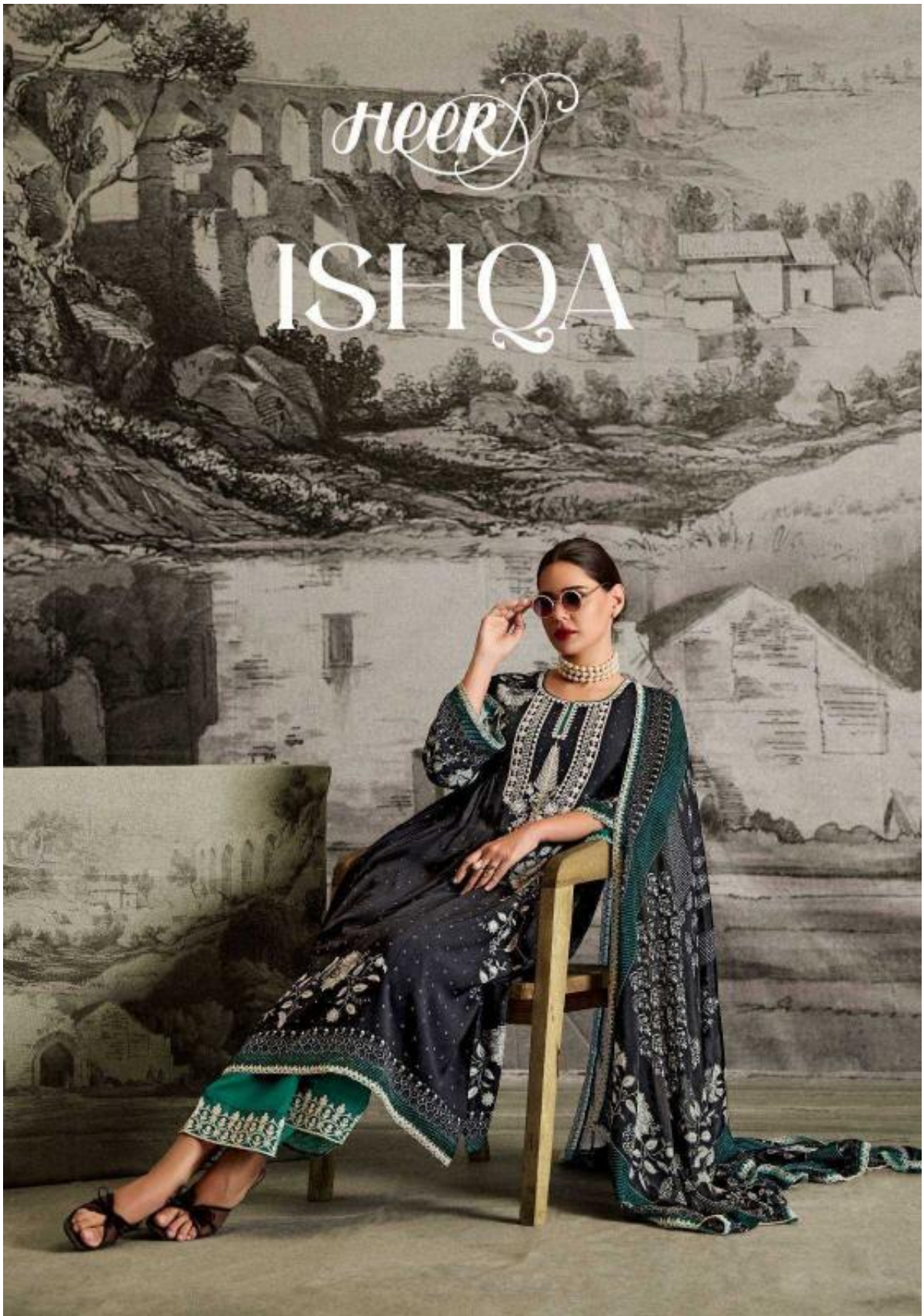


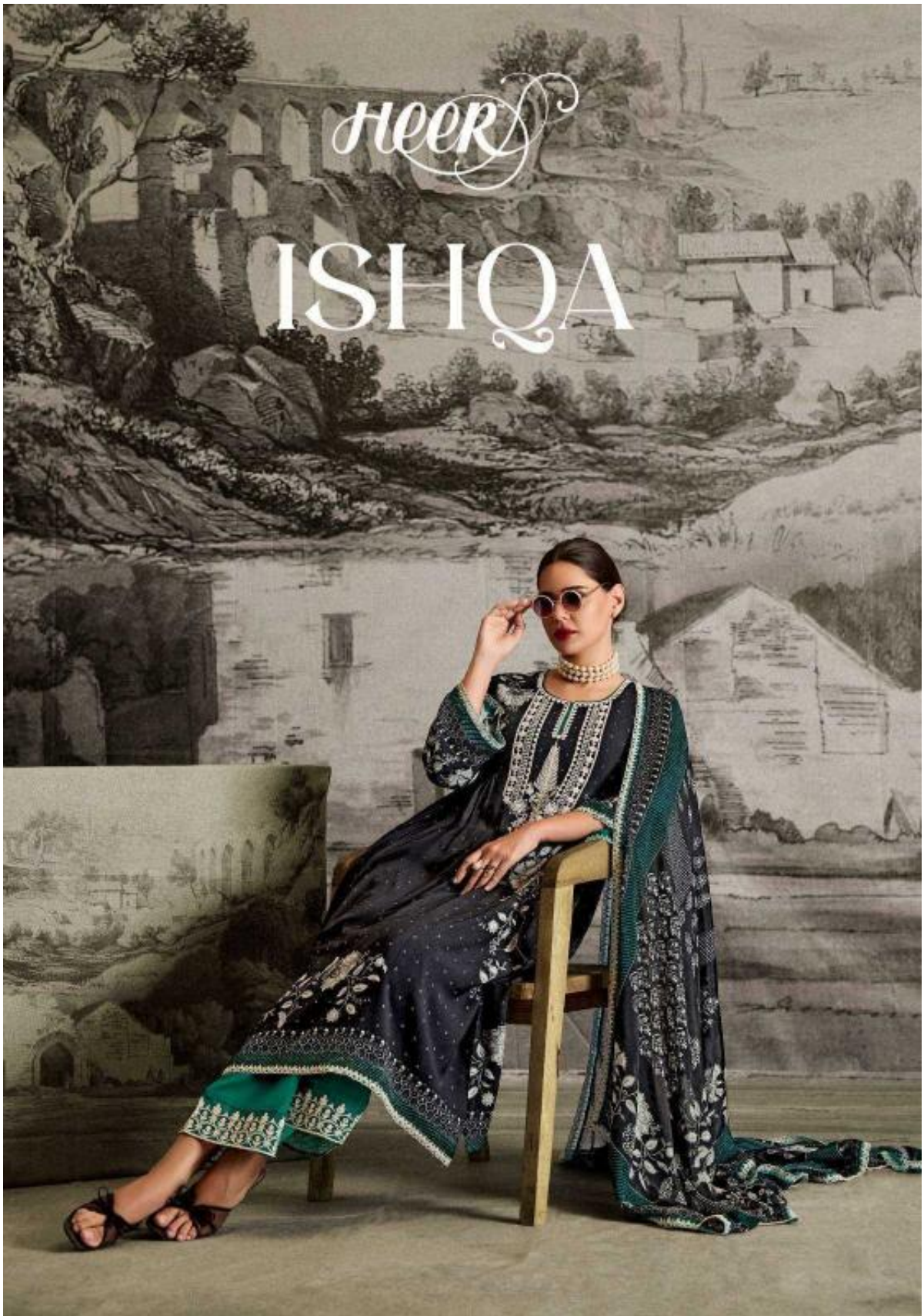
Heer

ISHQA



Heer

ISHQA







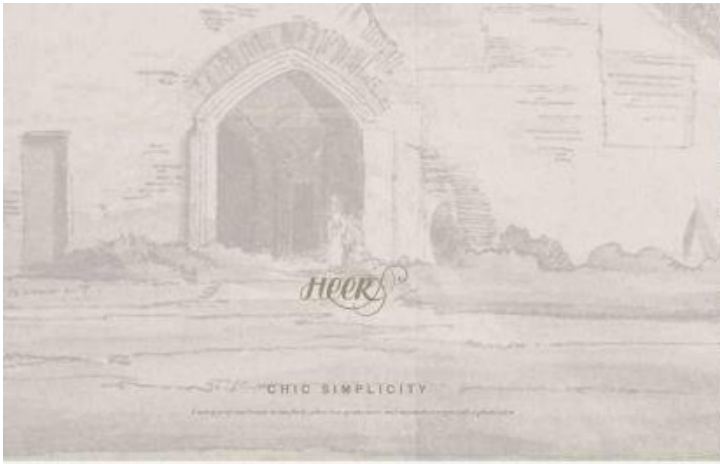
*HEER*

URBAN EDGE

*The pulsating energy of the city is captured in vibrant and bold prints in language of the streets.*

9451





9455



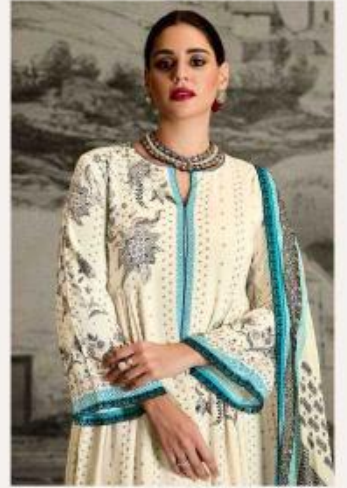


HEER

BOLD EXPRESSION

*Handcrafted in India, this collection is a tribute to the rich heritage of Indian fashion.*

9452





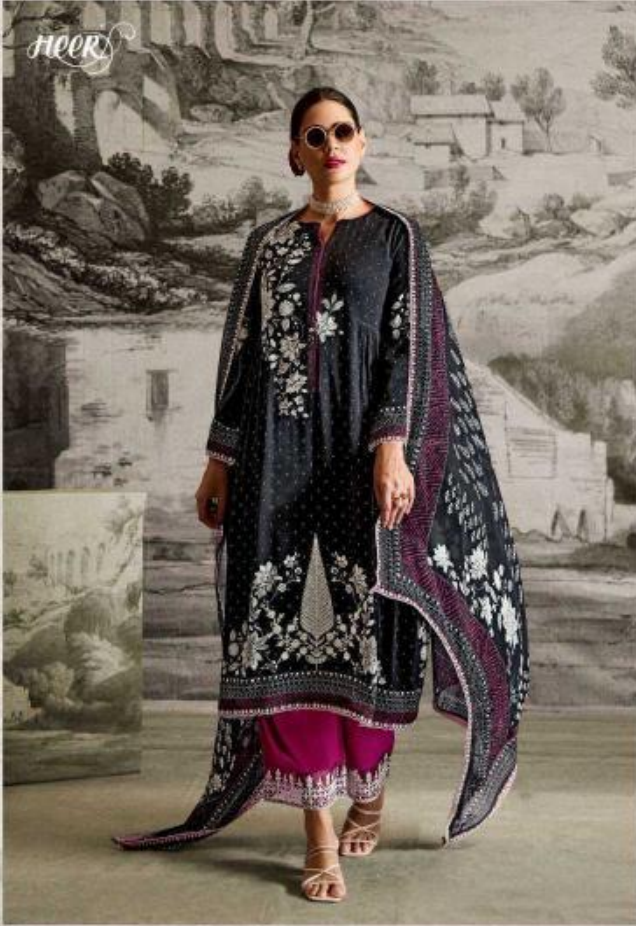
HEER

VINTAGE CHARM

*Look to the past, embrace the beautiful traditions of Dagestan and use the fabric of the present.*

9454





URBAN EDGE

The enduring spirit of art is captured in this series, with each piece a testament to the artist's vision.

9451





Heer

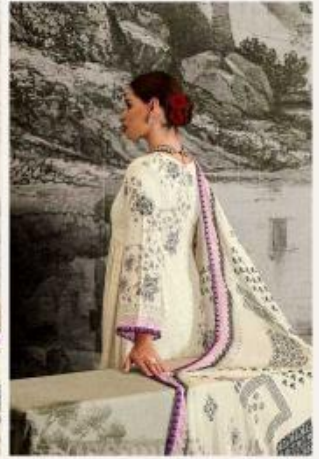


ETHEREAL BEAUTY

9456



HEER



VINTAGE CHARM

*It is the past where we find the charm of the present.*

9454

HEER

ISHQA



9451



9452



9453



9454



9455



9456





Heer

CHIC SIMPLICITY

Handmade floral embroidery on a dark base with green and white accents. The shawl features a matching pattern and a green border.

9455



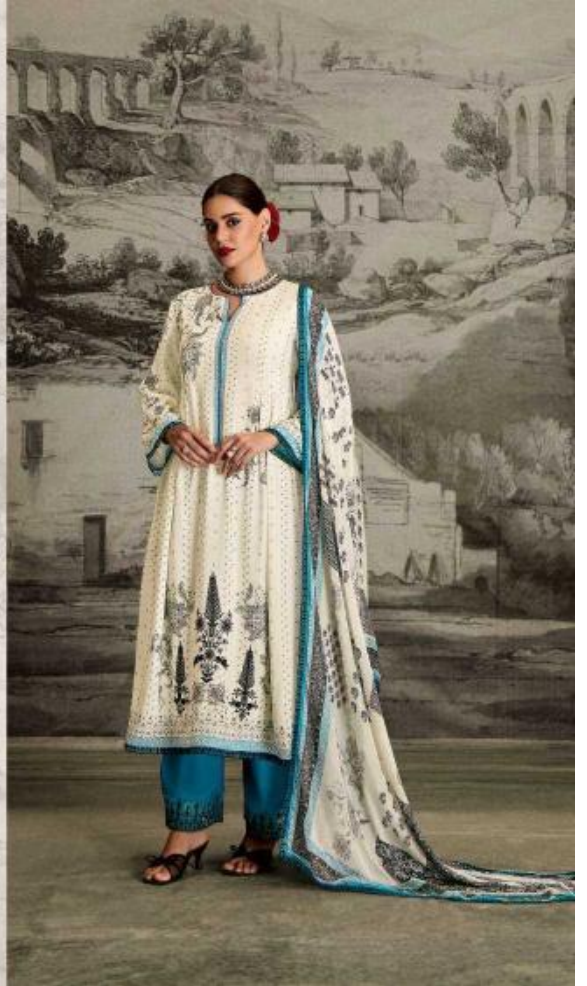


**BOLD EXPRESSION**

It is a bold expression of the modern woman's style.

*Heer*

9452



# ISHQA

## TOP

PURE MUSLIN WITH DIGITAL PRINT, DORI PLACEMENT EMBROIDERY ON FRONT AND SLEEVES WITH SCALLOPED EMBROIDERY BORDER

## DUPATTA

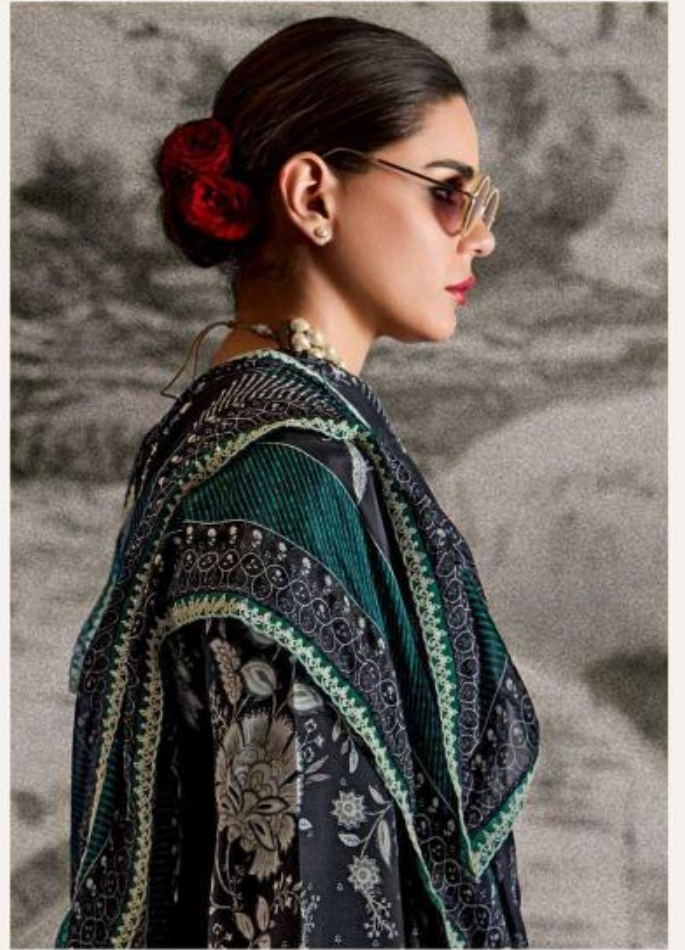
PURE CHINNON WITH DIGITAL PRINT AND SCALLOPED DORI EMBROIDERY BORDER

## BOTTOM

PURE MUSLIN WITH DORI EMBROIDERY

*Heer*  
BY KIMORA









HEER

ETHEREAL BEAUTY

*Common thread from all our collections, creating the timeless elegance of Indian fashion.*

9456

HEER



TIMELESS ELEGANCE

9453



**Heer ~ ISHQA ~ Vol-189****Price List**

<b>Sr.No</b>	<b>Design No</b>	<b>Rate</b>
<b>1</b>	<b>9451</b>	<b>2050</b>
<b>2</b>	<b>9452</b>	<b>2050</b>
<b>3</b>	<b>9453</b>	<b>2050</b>
<b>4</b>	<b>9454</b>	<b>2050</b>
<b>5</b>	<b>9455</b>	<b>2050</b>
<b>6</b>	<b>9456</b>	<b>2050</b>
<b>Total</b>		<b>12300</b>