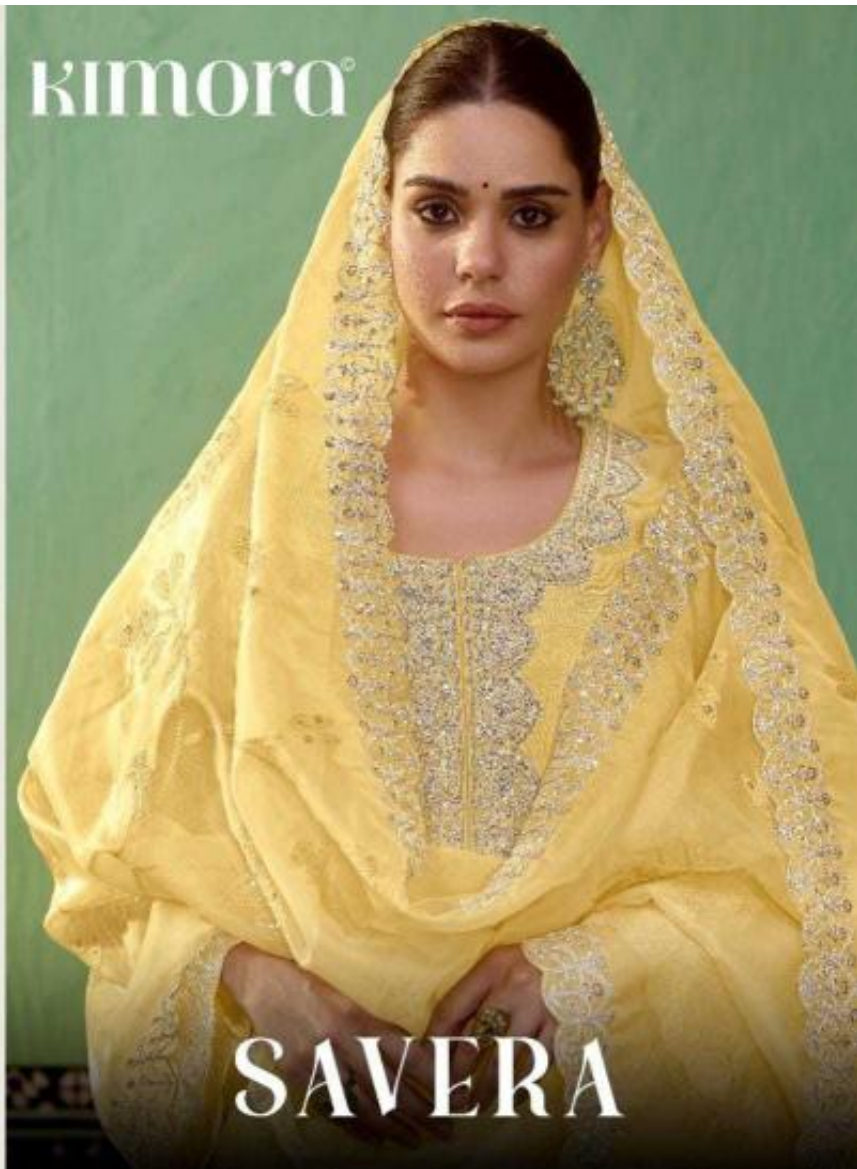


KIMORA®



SAVERA



ETHEREAL BEAUTY

From the light of the sun, a soft glow, a gentle breeze, a touch of the divine, a whisper of the soul.

2225

KIMONO





KIMONO

ETHEREAL BEAUTY

Designed by [unreadable] for [unreadable] collection [unreadable]

2225





URBAN EDGE
The urban edge of the Kimora is defined with the subtle elegance of the dress.

KIMORA

2223



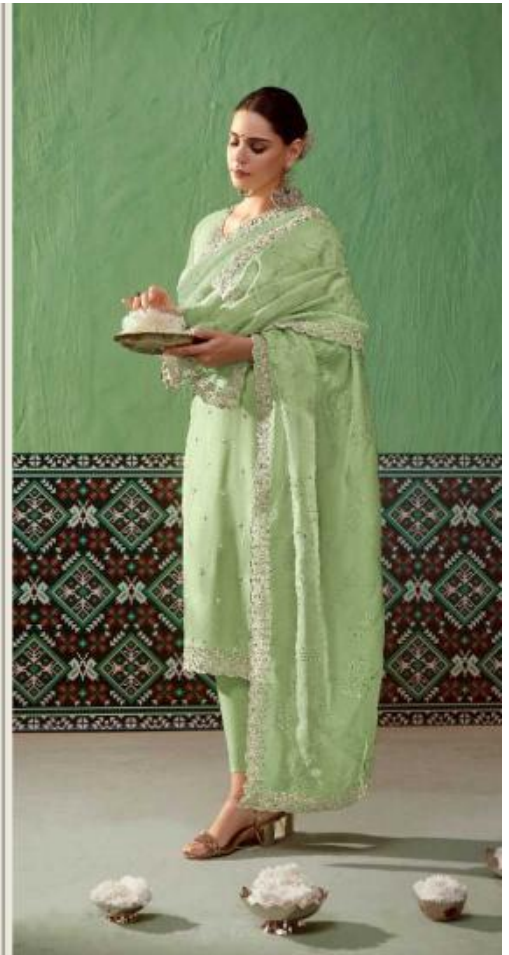
KIMONO



ECLECTIC FUSION

A blend of traditional patterns and modern silhouettes, creating a unique and elegant look.

2226





KIMONO

BOLD EXPRESSION

*Il tuo stile non ha confini e non si ferma
perché non ha confini.*

2221

SAVERA

TOP

PURE BAMBER SILK WITH EMBROIDERY ON NECKLINE,
BUTTIS , SCALLOPED BORDER HEMLINE AND SLEEVES

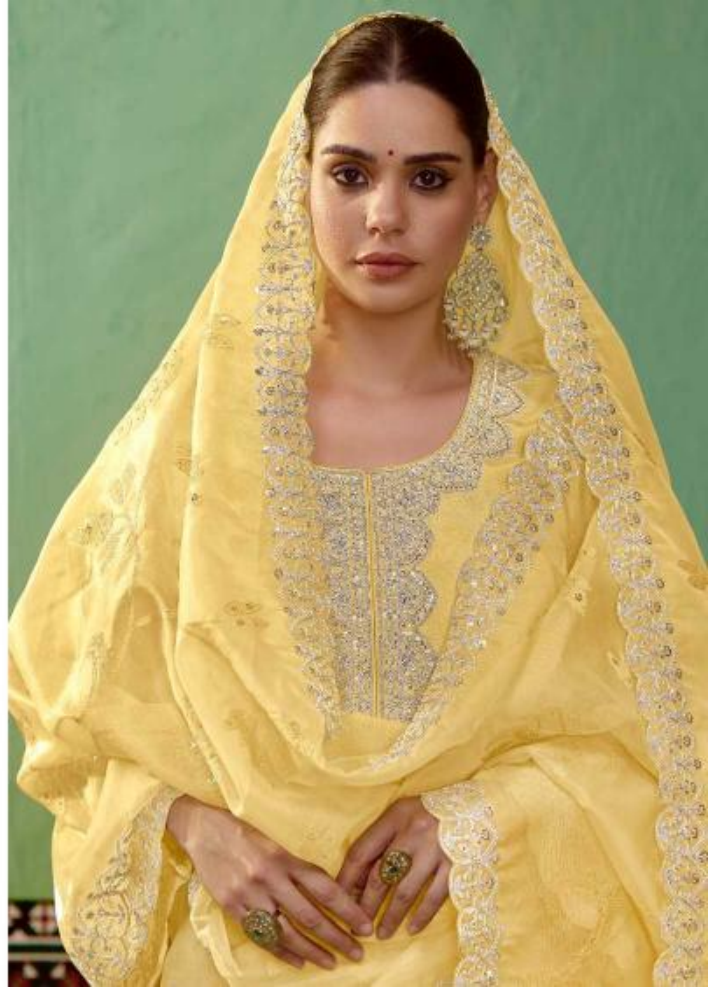
DUPATTA

ORGANZA WITH RESHAM TONAL EMBROIDERY WITH
SCALLOPED BORDER

BOTTOM

PURE BAMBER SILK

kimora[®]





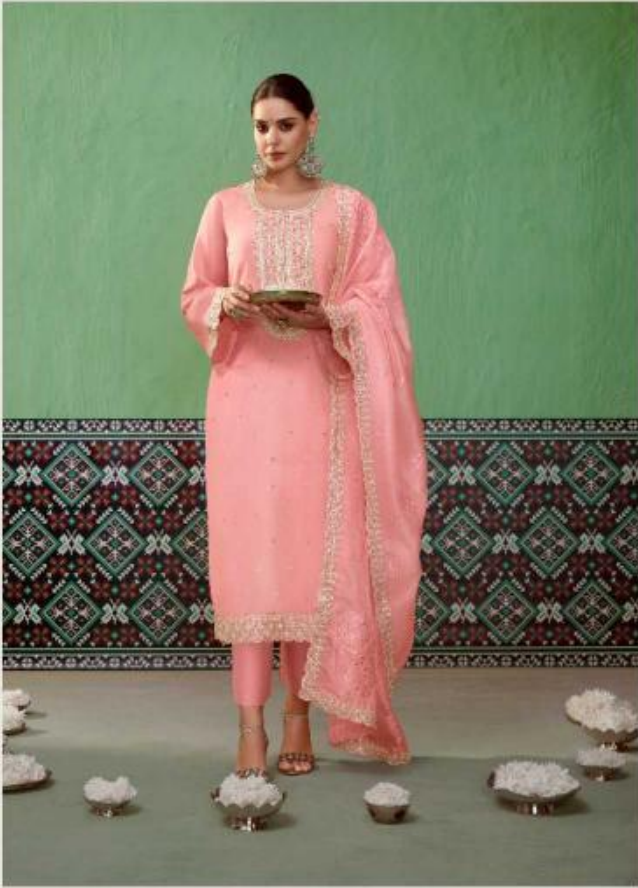
KIMORA



ECLECTIC FUSION

A fusion of traditional Indian patterns and modern design elements.

2226



KIMORA

VINTAGE CHARM

*For the discerning woman with the softness of a flower
and the grace of the breeze.*

2224



KIMORA



2221

2222

2223

SAVERA



2224

2225

2226



KIMONO

CHIC SIMPLICITY

Handmade in Italy with the finest quality materials and traditional craftsmanship.

2222

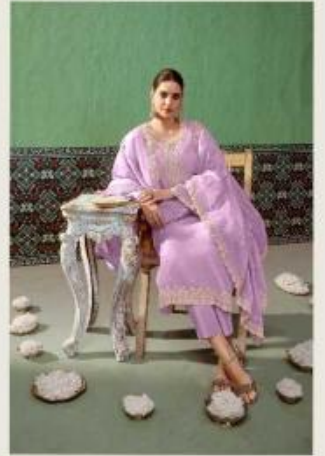


KIMONO

BOLD EXPRESSION

Il tuo gusto non si ferma a un solo stile, ma si esprime in più di uno.

2221



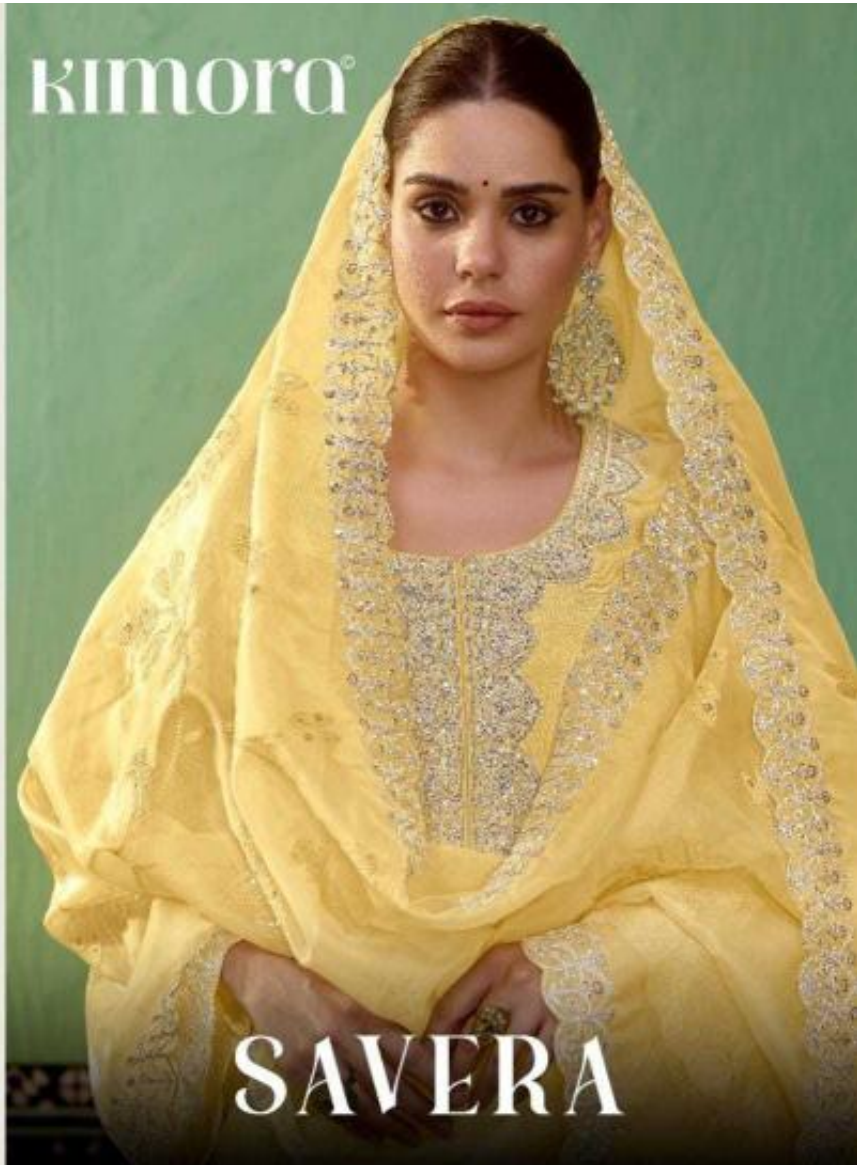


KIMONO

TIMELESS ELEGANCE

© 2023 [Brand Name]. All rights reserved. For more information, visit our website at [Brand Name].

KIMORA®



SAVERA