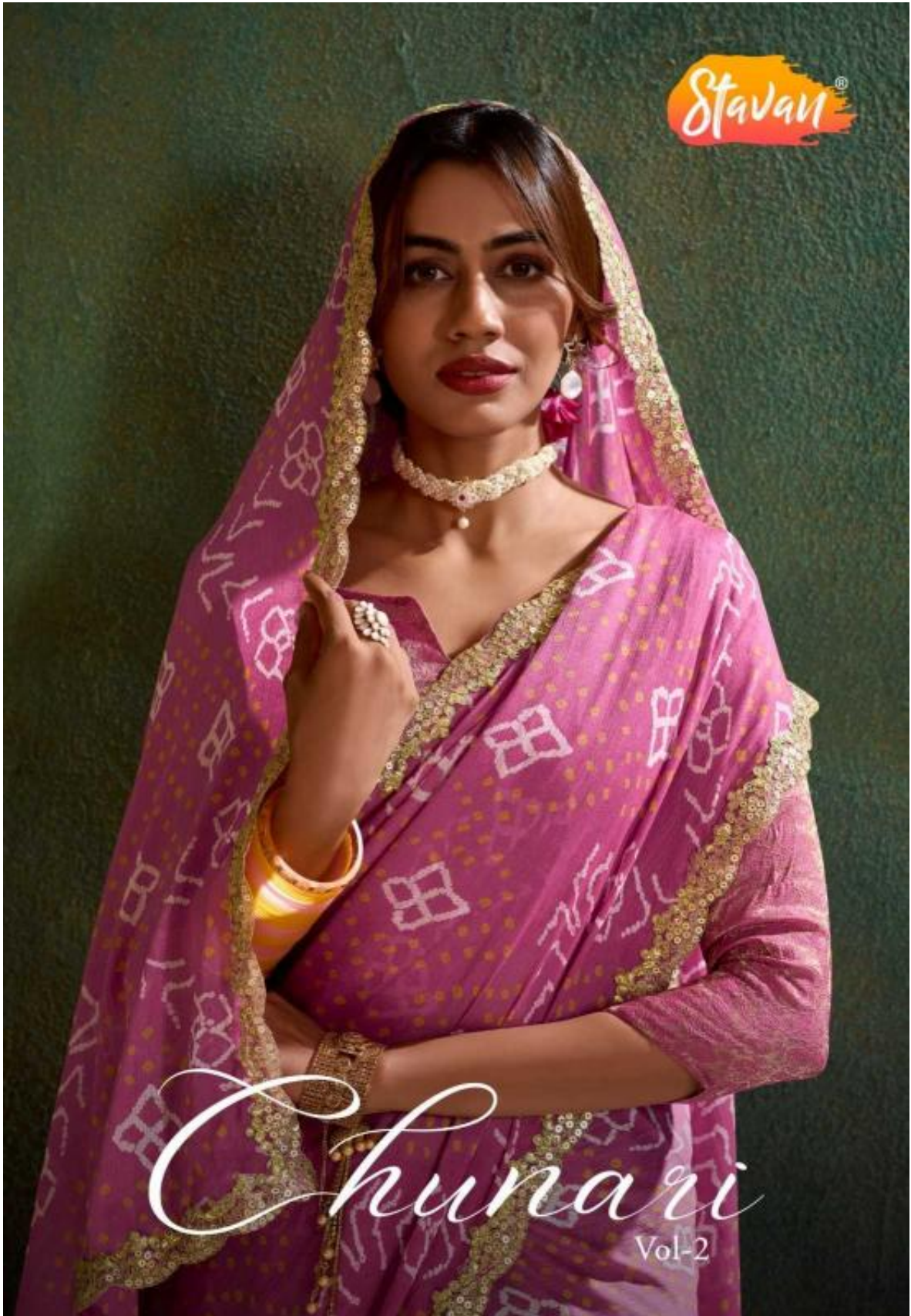


Stavan®



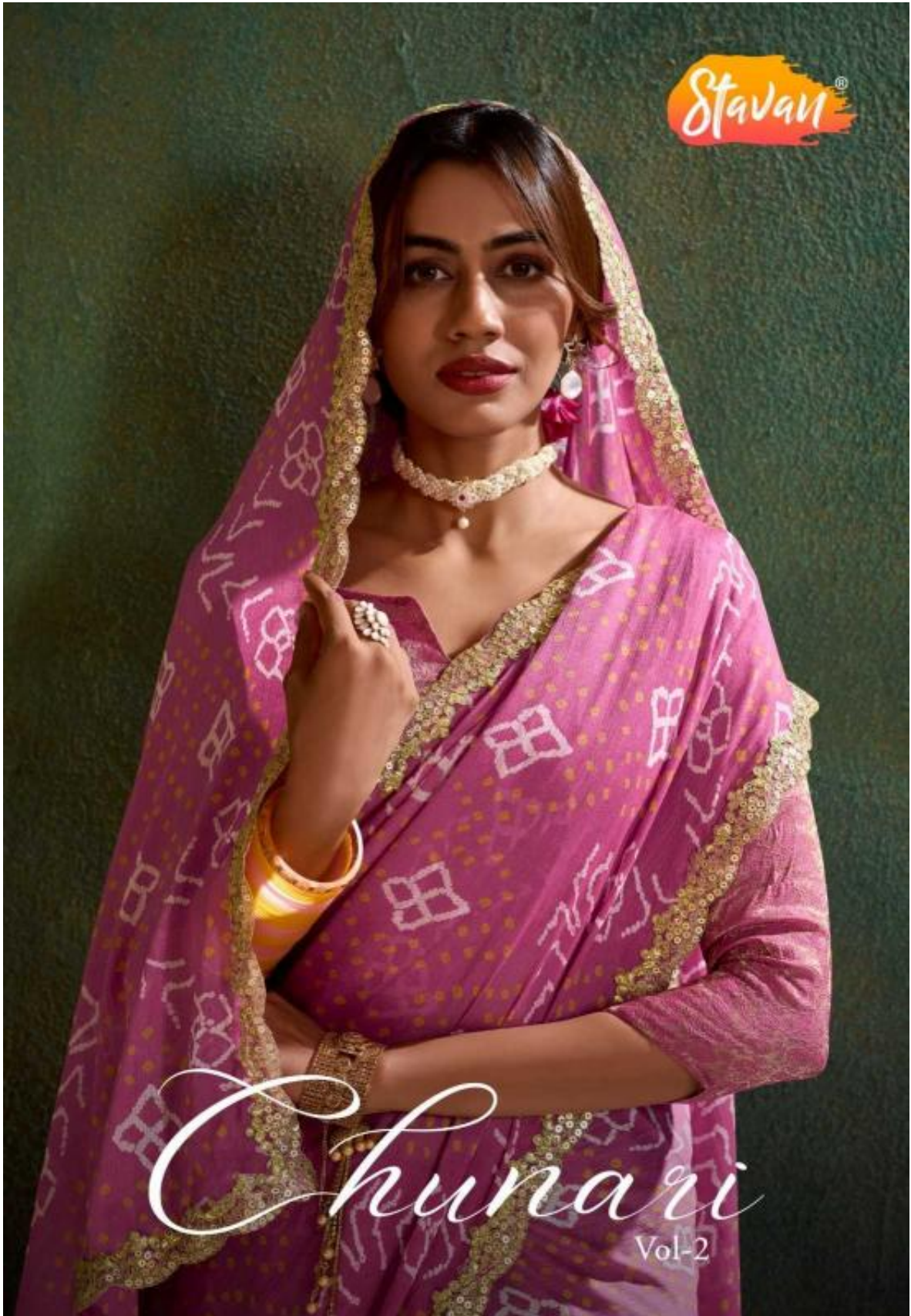
*Shunari*

Vol-2

Stavan®

*Shunari*

Vol-2



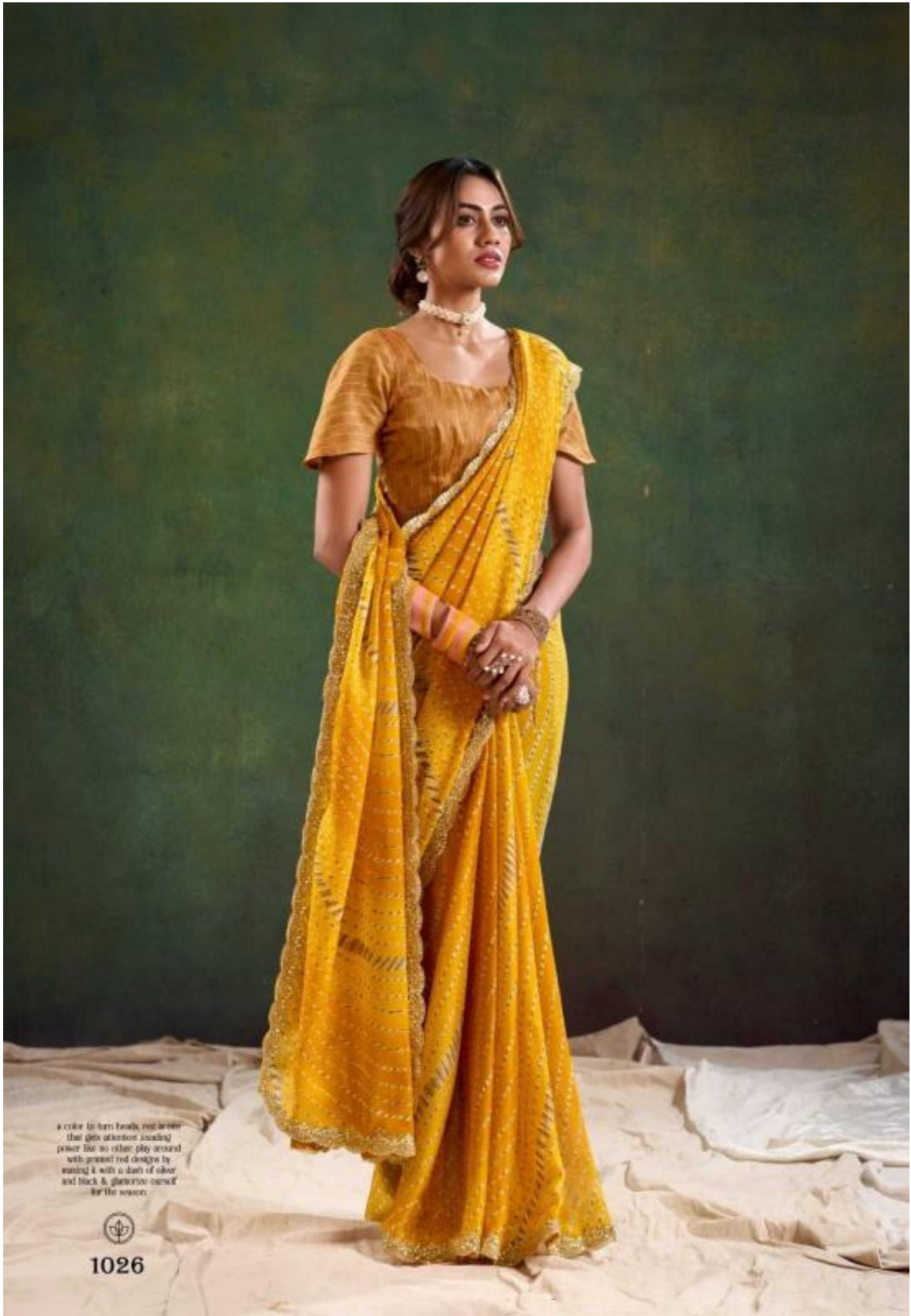




*Amazing Grace*

A color to catch the eye, a hue to attract attention, a shade to power the no other, stay around with printed and designs by mixing it with a dash of silver and black. It glances itself for the season.





a color to turn heads, red is  
that gives attention, loading  
power like no other, play around  
with golden red designs by  
mixing it with a dash of silver  
and black & glamorize yourself  
for the season.



1026





1030







1034





  
1031



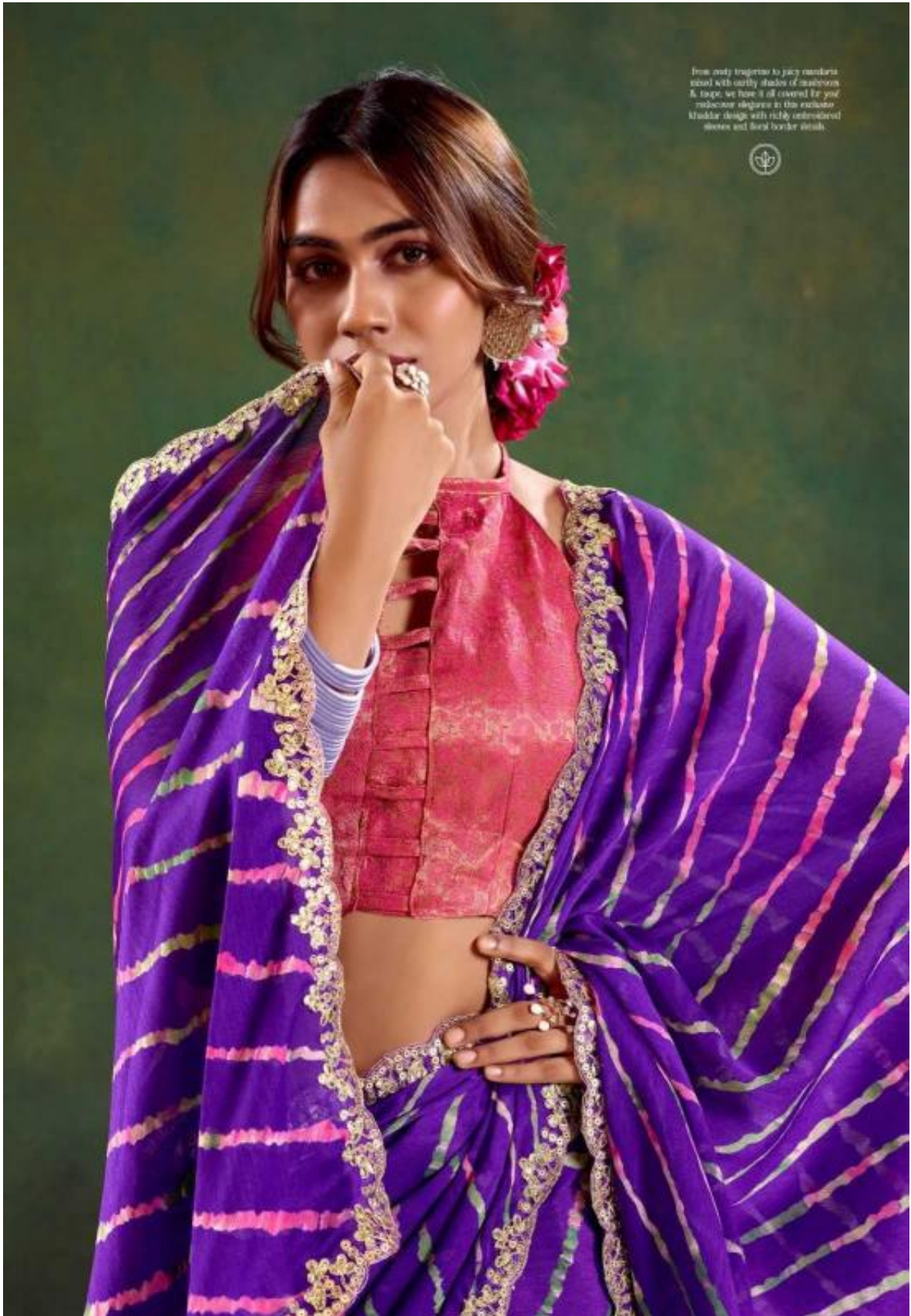
1027





1028

From earthy turquoise to juicy mandarin  
coral with earthy shades of mushroom  
& beige, we have it all covered for you!  
Indulge in elegance in this exclusive  
Kashmir design with richly embroidered  
motifs and floral border details.





1038





1032

## *A Scarlet Woman*



In the 20th century, the style trends of the fashion industry dominated the world more than they ever did, and control not only the way people dress but also trends in home ware design, making fashion and people's overall attitudes. In the 60s flower power did not only mean flowers and tattoos, it summed up the whole attitude of a generation, and this is more more prominent today.



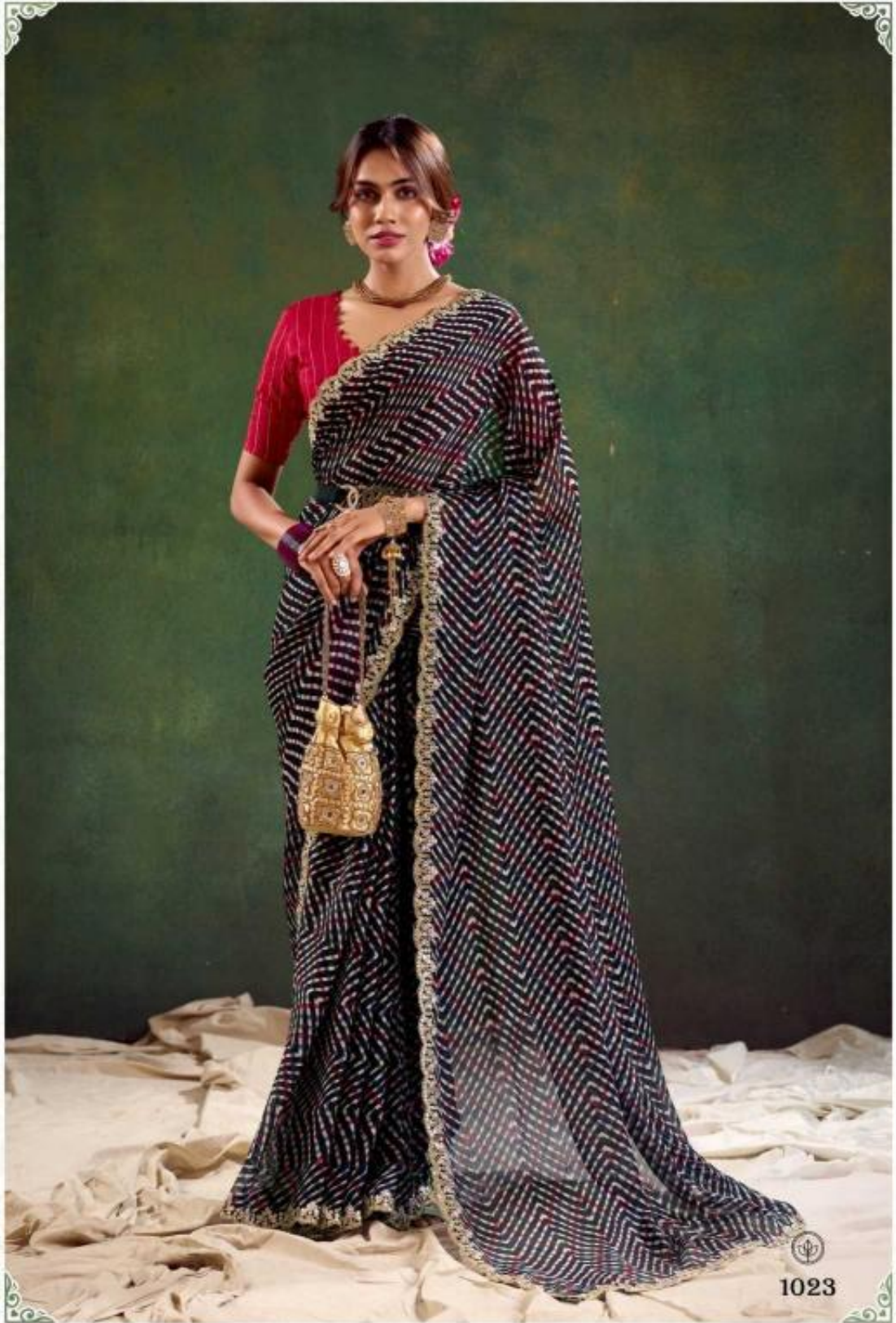
# Golden Moment

Share the moments of joy and crowd  
with you. Turn your party, showcase a mood  
of elegance... in your perfect traveling  
ensemble.



empire, intricately woven with a fine  
of pink & gold, accented with colorful  
ethnic elements.





1023



1022



# Realm of Fantasy

A case to keep back, and it has the great structure, avoiding people like no other. They arrived with a lot of red design by mixing it with a lot of silver and black & guarantee yourself for the season.



1036







1021



*Powerfull Fashion*

holding the rich green colors of nature, the  
mesmerizing energy and refreshing aesthetic of  
nature brings back a lot of vibrance to back  
that is making you powerful!





1029



1024



1019

1020

1021

1022

1023



1029

1030

1031

1032

1033





1024

1025

1026

1027

1028



1034

1035

1036

1037

1038





1020