



M. N. Sarees

Magaulal Nathubhai & sons

D.NO.	DESCRIPTION	BLOUSE	M.N.
7501	SEA GREEN PURE BANARASI TUSCANY SAREE WITH CUT-DANA,MOTI AND SEQUENCE HEAVY WORK	PURE SILK	4250
7502	MUSTARD PURE BANARASI TUSCANY SAREE WITH MOTI,ZARKAN & THREAD HEAVY WORK	PURE BANARASI TUSCANY	4250
7503	PISTA PURE SOFT SHINE SAREE WITH CUT-DANA,MOTI & SEQUENCE HEAVY WORK	PURE SILK	4250
7504	CREAM PURE BANARASI TUSCANY SAREE WITH MOTI,MIRROR,JARI,THREAD & SEQUENCE HEAVY WORK	ITALIAN SILK	5999
7505	BLACK PURE BANARASI TUSCANY SAREE WITH MOTI,THREAD & SEQUENCE HEAVY WORK	PURE BANARASI TUSCANY	3999
7506	GREY PURE BANARASI TUSCANY SAREE WITH MOTI,ZARKAN & SEQUENCE HEAVY WORK	PURE BANARASI TUSCANY	4250
7507	PISTA PURE BANARASI TUSCANY SAREE WITH MOTI,ZARKAN & THREAD HEAVY WORK	PURE BANARASI TUSCANY	4250
7508	PINK PURE BANARASI TUSCANY SAREE WITH CUT-DANA,MOTI AND SEQUENCE HEAVY WORK	PURE SILK	4250
7509	GREY PURE BANARASI TUSCANY SAREE WITH MOTI,MIRROR,JARI,THREAD & SEQUENCE HEAVY WORK	ITALIAN SILK	5999
7510	CREAM PURE BANARASI TUSCANY SAREE WITH MOTI,ZARKAN & SEQUENCE HEAVY WORK	PURE BANARASI TUSCANY	4250
7511	BLACK PURE BANARASI TUSCANY SAAREE WITH THREAD,MOTI,CUT-DANA,MIRROR & ZARKAN HEAVY WORK	ITALIAN SILK	5550
7512	GREY PURE SOFT SHINE SAREE WITH MOTI,ZARKAN & SEQUENCE HEAVY WORK	MELBOURN SILK	3999
7513	BLACK PURE BANARASI TUSCANY SAREE WITH CUT-DANA,MOTI AND SEQUENCE HEAVY WORK	PURE SILK	4250

NOTE:

ALL SAREES ARE WITH ORIGINAL MIRROR,MOTI & CUT- DANA WORK



7501 7502 7503 7504 7505



7511 7512 7513



M. Nathubhai & Sons



7506 7507 7508 7509 7510



7302 7502 BLACK 7507 WHITE 11004 - A 11004 - B 11004 - C 11004 - D



M. N. Sarees

Magaulal Nathubhai & sons









7911

Some. The price that reflects my inner beauty.



7509

Designer is the only beauty that never fades



SHARDA
S. N. SHARMA




Sita Sarees
Elegance is the only beauty that never fades.

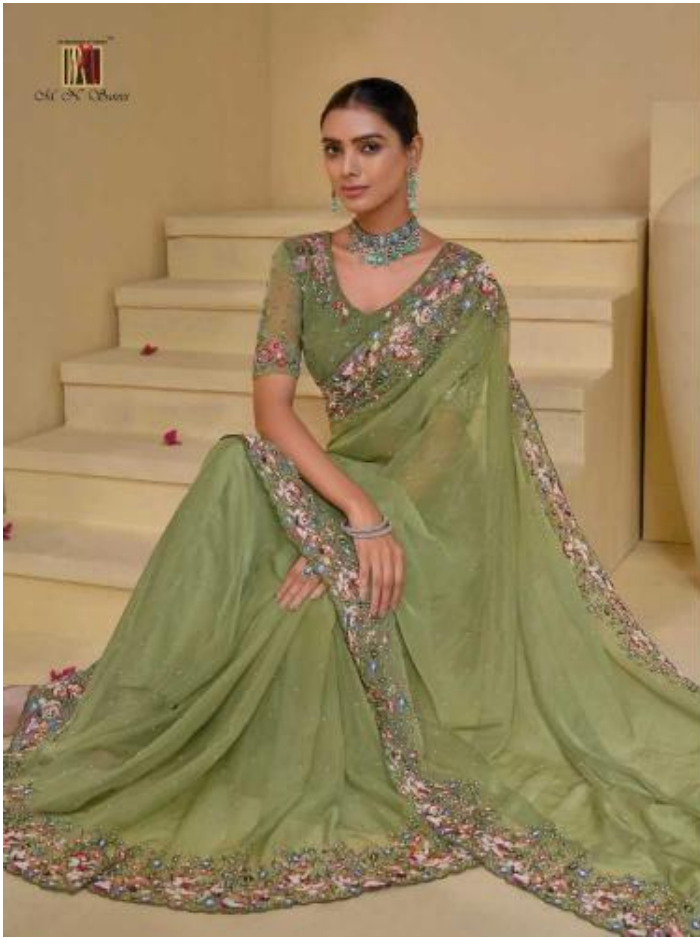




M. A. Oberoi

Asian. The mirror that reflects my true identity.





In a saree, you're always dressed for success



S.M. & S. Khanna

Life is a party and my saree is the center!





7502

Elegance in the colors of nature and nature's colors



Sri Sri Obhaya



Designed in a saree, I don't like the freedom of my saree. It's a saree.





7504

Designed in a saree. I feel like the beauty of my saree this time.





Life may not be perfect, but your saree can be.



Sri Sri Sarees



Designed in a saree, I feel like the heroine of my own life's movie.



7506

Every saree has a story to tell, and for the storybook



SHYAM SANGHANI
SHYAM SANGHANI
SHYAM SANGHANI





S. S. Ahluwalia

Life is an art to what my eyes see in the world!





7509

Life is a party, and my saree is the center!





7513

Elegance is the only luxury that never fades



7512

Life is a party, and you are the center of it!



7501

Die in party and my name is the world!

SHARON
S/O'S OFFICE









Dr. Ar. Khanna

Life is a party and my work is the content





M. S. Oberoi

Magantlal Nathubhai & sons





S.H. Khan

Empire is the only beauty that never fades







an online brand™
OH OH OFFICE

Empower is the only beauty that never fades





OH OH

Designed in a classic, ideal for the festive of the new 2018 season

