

ALFINA

the Blue
BETWEEN
SKY *and*
WATER



ABDULAWA'S VISION IS PRECISE,
"CORRECTING ANCHORING"

"ALL THE WAY TO THE
SHORES"
INDEPENDENT

BLOOMSBURY CIRCUS







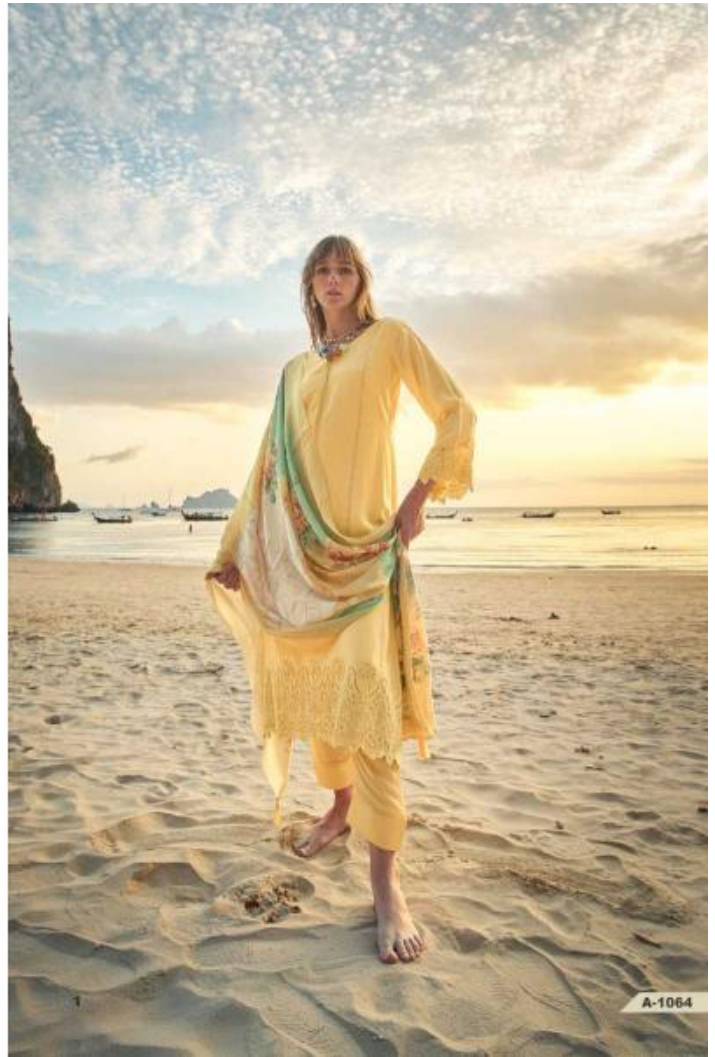



AIQA
LONDON



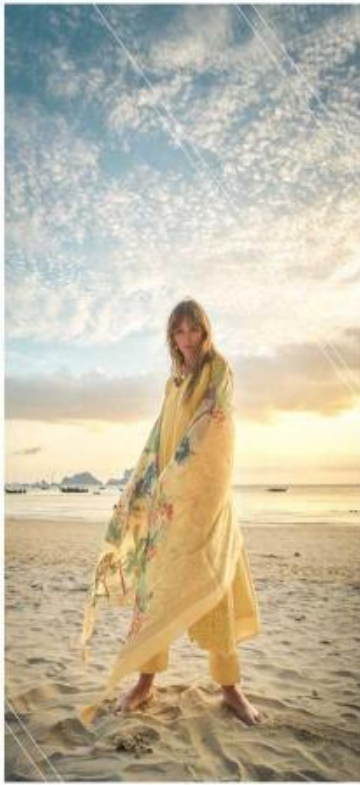


Spinal the public dimension of Papadimitriou, she stands in the air, now always aimed to SEEK ATTIRE IN THE COLOR OF GOD and in the of nature and world.
Avery, long after she takes a step, it's important from the landscape for the people, what's truly nature.



A-1064

AIDA
LONDON



Against the golden shimmer of the sunset, she stands in the soft glow of the evening
in the AIDA LONDON collection. The dress is a blend of traditional and modern
designs, featuring intricate floral patterns and a vibrant color palette.
AIDA LONDON is a collection of elegant and sophisticated dresses for the modern woman.



MAGICAL COBALT



YOU ARE UNIQUE.



© 2015 THE BRAND. ALL RIGHTS RESERVED. THE BRAND IS A REGISTERED TRADEMARK OF THE BRAND. ALL OTHER TRADEMARKS ARE THE PROPERTY OF THEIR RESPECTIVE OWNERS. THE BRAND IS A REGISTERED TRADEMARK OF THE BRAND. ALL OTHER TRADEMARKS ARE THE PROPERTY OF THEIR RESPECTIVE OWNERS.

www.aiqa.com
+44 (0)20 7494 1111
+44 (0)20 7494 1112
+44 (0)20 7494 1113
+44 (0)20 7494 1114
+44 (0)20 7494 1115
+44 (0)20 7494 1116
+44 (0)20 7494 1117
+44 (0)20 7494 1118
+44 (0)20 7494 1119
+44 (0)20 7494 1120



TWO
WEST
DELAWARE





The Palette
BY MARINA



ALQA
DESIGNER

Belligiant










AIQA
LONDON





A-1061



A-1062



A-1065



A-1066



A-1063



A-1064



A-1067





TWO
WEST
DELAWARE



ALFINA

:TOP:

PURE BEMRG MASLINE WITH FENCY WORK

:DUPATTA:

PURE BEMRG GAJI SILK DIGITAL PRINT WITH TESSLES

:BOTTOM:

PURE SILK SATIN SOLID

RATE:-2100/-

PRODUCT BY PREMIUM COLLETION



AIQA
LONDON



© 2018 AIQA LONDON. ALL RIGHTS RESERVED. AIQA LONDON IS A REGISTERED TRADEMARK OF AIQA LONDON. AIQA LONDON IS A REGISTERED TRADEMARK OF AIQA LONDON. AIQA LONDON IS A REGISTERED TRADEMARK OF AIQA LONDON. AIQA LONDON IS A REGISTERED TRADEMARK OF AIQA LONDON.

ALFINA

the Blue
BETWEEN
SKY *and*
WATER



ABDULAWA'S VISION IS PRECISE,
"CORRECTING ANCHORING"

"ALL THE WAY TO THE
SHORES"
INDEPENDENT

BLOOMSBURY CIRCUS