

  
**ZAHA**  
**INARA**





**INARA**

**ZAHA**

**D.No.10329**

**TOP** Cambric Cotton With Heavy Embroidery Work

**BOTTOM-INNER** Semi Lawn

**DUPATTA** Tubby Silk with Print



**INARA**

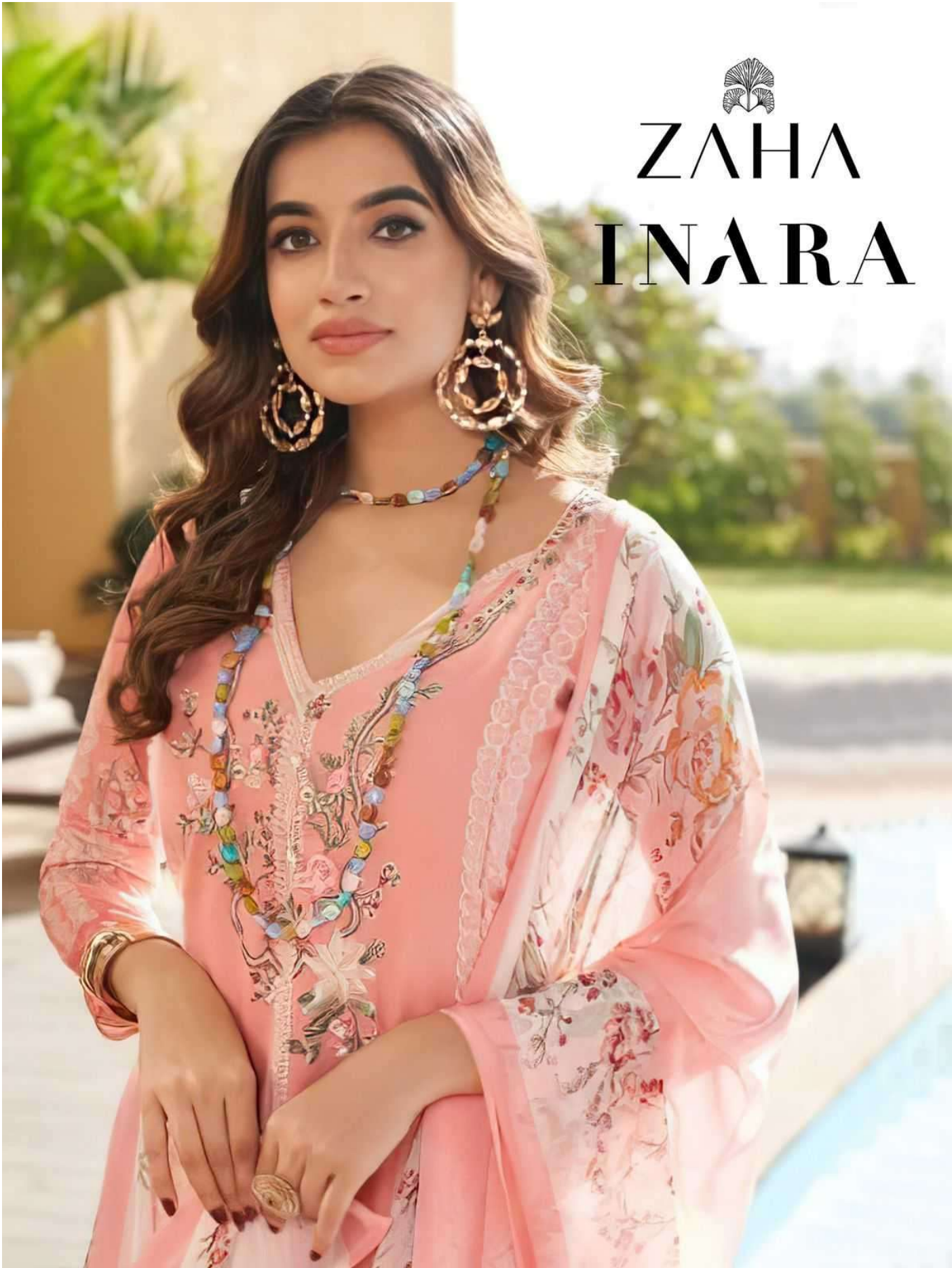
**ZAHA**

**D.No.10327**

**TOP** Cambric Cotton With Heavy Embroidery Work

**BOTTOM-INNER** Semi Lawn

**DUPATTA** Tubby Silk with Print



ZAHA  
INARA



**INARA**  
TOP Cambric Heavy





**INARA**

**ZAHA**

**D.No.10326**

**TOP** Cambric Cotton With Heavy Embroidery Work

**BOTTOM-INNER** Semi Lawn

**DUPATTA** Tubby Silk with Print





**INARA**

**ZAHA**

**D.No.10330**

**TOP** Cambric Cotton With Heavy Embroidery Work

**BOTTOM-INNER** Semi Lawn

**DUPATTA** Tubby Silk with Print

ZAHA

INARA

TOP Cambric Cotton With Heavy Embroidery Work

BOTTOM-INNER Semi Lawn

DUPATTA

Tubby Silk with Print



10326



10327



10328



10329



10330



**INARA ZA**  
TOP Cambric Cotton With Heavy Embroidery Work  
BOTTOM-INI



**INARA ZAI**  
TOP Cambric Cotton With Heavy Embroidery Work  
BOTTOM-INNER

ZAHHA



**INARA ZAHHA**  
TOP: Cambric Cotton With Heavy Embroidery Work  
BOTTOM-INNER: Semi Lurex

328





**INABA ZAHHA**  
TOP - Cream with Blue Embroidery Work  
BOTTOM - INI FER Sem Lawn





ZAHIA



INARA Z

TOP - Cambric, C Heavy

21





**INARA**  
TOP Cambric Heavy

