

A woman with her hair pulled back and a white flower in it, wearing a long yellow dress with floral embroidery on the sleeves and hem. She is standing next to a large, light-colored ceramic vase filled with a bouquet of pink, orange, and yellow roses. The background is a simple, light-colored wall with a window on the right. The lighting is soft and natural, suggesting an indoor setting near a window.

**Shree<sup>®</sup>**  
**FABS**



**R-1297 C**



**READY MADE**  
COLLECTION

**CARE INSTRUCTIONS**

- DO NOT USE ANY TYPE OF BLEACH OR STAIN REMOVING CHEMICALS
- DO NOT OVER EXPOSE DAMP FABRIC TO STRONG SUNLIGHT
- IRON AT MODERATE TEMPERATURE





**READY MADE**  
COLLECTION



**R-1297 A**



**R-1297 B**



**R-1297 C**



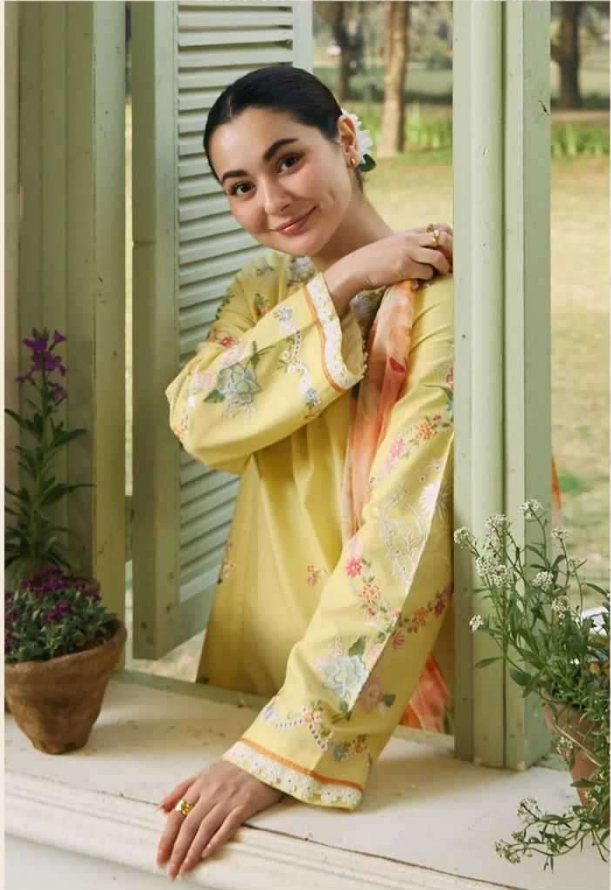
**R-1297 D**



A woman with her hair pulled back and a white flower in it, wearing a long yellow dress with floral embroidery on the sleeves and hem. She is standing next to a large, light-colored ceramic vase filled with a bouquet of pink, orange, and yellow roses. The background is a simple, light-colored wall with a window on the right.

**Shree**<sup>®</sup>  
FABS





**R-1297 A**



**READY MADE**  
COLLECTION

**CARE INSTRUCTIONS**

- DO NOT USE ANY TYPE OF BLEACH OR STAIN REMOVING CHEMICALS
- DO NOT OVER EXPOSE DAMP FABRIC TO STRONG SUNLIGHT
- IRON AT MODERATE TEMPERATURE



**R-1297 B**



**READY MADE**  
COLLECTION

**CARE INSTRUCTIONS**

- DO NOT USE ANY TYPE OF BLEACH OR STAIN REMOVING CHEMICALS
- DO NOT OVER EXPOSE DAMP FABRIC TO STRONG SUNLIGHT
- IRON AT MODERATE TEMPERATURE





**R-1297 D**



**READY MADE**  
COLLECTION

**CARE INSTRUCTIONS**

- DO NOT USE ANY TYPE OF BLEACH OR STAIN REMOVING CHEMICALS
- DO NOT OVER EXPOSE DAMP FABRIC TO STRONG SUNLIGHT
- IRON AT MODERATE TEMPERATURE