



**TOP- ORGENZA PEDING WITH EMBROIDERY
WITH CUT WORK**

M-241-A


INNER- PEDING SANTOON

BOTTOM- SANTOON

**DUPATTA- PEDING BUTTERFLY NET WITH
EMBROIDERY WORK**

 DRY CLEAN ONLY.

 DO NOT USE ANY BLEACH OR STAIN REMOVING CHEMICAL.

 IRON THE FABRIC AT MODERATE TEMPERATURE.



**TOP- ORGENZA PEDING WITH EMBROIDERY
WITH CUT WORK**

M-241-A


INNER- PEDING SANTOON

BOTTOM- SANTOON

**DUPATTA- PEDING BUTTERFLY NET WITH
EMBROIDERY WORK**

 DRY CLEAN ONLY.

 DO NOT USE ANY BLEACH OR STAIN REMOVING CHEMICAL.

 IRON THE FABRIC AT MODERATE TEMPERATURE.



TOP- CAMBRIC COTTON WITH HEVY EMBROIDERY

M-231

BOTTOM/INNER- SEMILOWN

DUPATTA/NET- HEVY NET WITH EMBROIDERY WORK

-  DRY CLEAN ONLY.
-  DO NOT USE ANY BLEACH OR STAIN REMOVING CHEMICAL.
-  IRON THE FABRIC AT MODERATE TEMPERATURE.



**TOP- CAMBRIC COTTON BORING WORK
WITH HEAVY EMBROIDERY**

M-244 B

BOTTOM/INNER- SEMI COTTON

DUPATTA- COTTON DIGITAL PRINTED

-  DRY CLEAN ONLY.
-  DO NOT USE ANY BLEACH OR STAIN REMOVING CHEMICAL.
-  IRON THE FABRIC AT MODERATE TEMPERATURE.



**TOP- HEAVY JORJAT WITH EMBROIDERY
WORK WITH FENCY LATKAN PEKET**

M-205 B

BOTTOM/INNER- SANTOON

**DUPATTA- BUTTER FLY NET
EMBROIDERY WORK**

☉ DRY CLEAN ONLY.
⊗ DO NOT USE ANY BLEACH OR STAIN REMOVING CHEMICAL.
☎ IRON THE FABRIC AT MODERATE TEMPERATURE.



TOP- ORGENZA WITH EMBROIDERY

M-236 A

BOTTOM/INNER- SANTOON

DUPATTA/NET- BUTTERFLY NET WITH EMBROIDERY

-  DRY CLEAN ONLY.
-  DO NOT USE ANY BLEACH OR STAIN REMOVING CHEMICAL.
-  IRON THE FABRIC AT MODERATE TEMPERATURE.



TOP- JORJAT EMBROIDERY WITH KHATLI WORK (M-216 B)

BOTTOM/INNER- SANTOON

DUPATTA- NAJMEEN WITH WORK



- ☉ DRY CLEAN ONLY.
- ☒ DO NOT USE ANY BLEACH OR STAIN REMOVING CHEMICAL.
- ☒ IRON THE FABRIC AT MODERATE TEMPERATURE.



TOP - HEAVY FOX GEORGETTE WITH EMBROIDERED & DIAMOND MOTI

BOTTOM - SANTOON

DUPATTA - HEAVY NAZMEEN WITH HEAVY EMBROIDERY WORK

M-215-C



☉ DRY CLEAN ONLY.
✗ DO NOT USE ANY BLEACH OR STAIN REMOVING CHEMICAL.
☎ IRON THE FABRIC AT MODERATE TEMPERATURE.

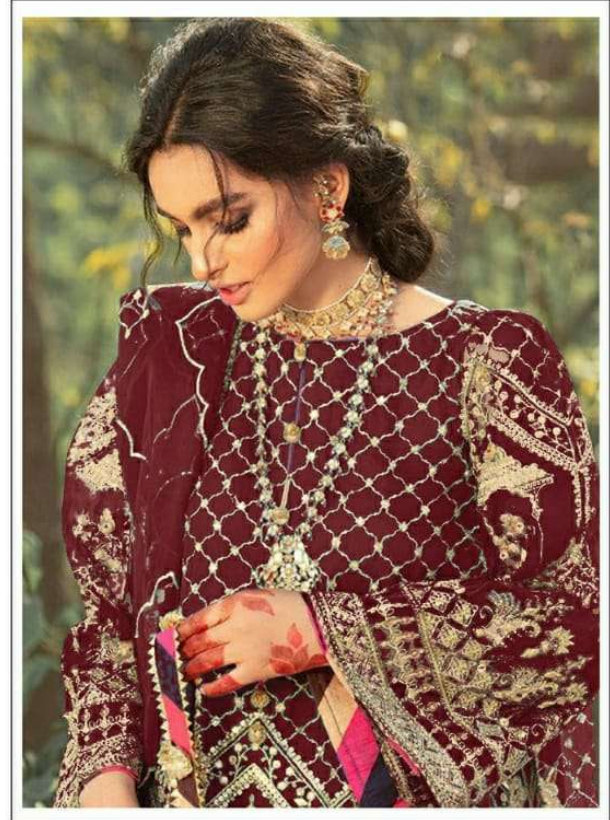


TOP- DULL ORGANZA WITH HEAVY EMBROIDERY (M-207 C)

BOTTOM/INNER- SANTOON

**DUPATTA- ORGANZA WITH WORK WITH
4 SIDE CUT WORK LACE**

- ☉ DRY CLEAN ONLY.
- ✗ DO NOT USE ANY BLEACH OR STAIN REMOVING CHEMICAL.
- ☼ IRON THE FABRIC AT MODERATE TEMPERATURE.



TOP- DULL ORGANZA WITH HEAVY EMBROIDERY

M-217 C

BOTTOM/INNER- SANTOON

DUPATTA/NET- ORGANZA WITH WORK WITH 4 SIDE CUT WORK LACE

- ☉ DRY CLEAN ONLY.
- ✗ DO NOT USE ANY BLEACH OR STAIN REMOVING CHEMICAL.
- ☎ IRON THE FABRIC AT MODERATE TEMPERATURE.



TOP- DULL ORGANZA WITH HEAVY EMBROIDERY M-207

BOTTOM/INNER- SANTOON

**DUPATTA- ORGANZA WITH WORK WITH
4 SIDE CUT WORK LACE**

- ☑ DRY CLEAN ONLY.
- ☒ DO NOT USE ANY BLEACH OR STAIN REMOVING CHEMICAL.
- ☒ IRON THE FABRIC AT MODERATE TEMPERATURE.



TOP- DULL ORGANZA WITH HEAVY EMBROIDERY

M-186

BOTTOM/INNER- SANTOON

DUPATTA/NET- BUTTERFLY NET WITH WORK WITH 4 SIDE CUT WORK LACE

-  DRY CLEAN ONLY.
-  DO NOT USE ANY BLEACH OR STAIN REMOVING CHEMICAL.
-  IRON THE FABRIC AT MODERATE TEMPERATURE.