

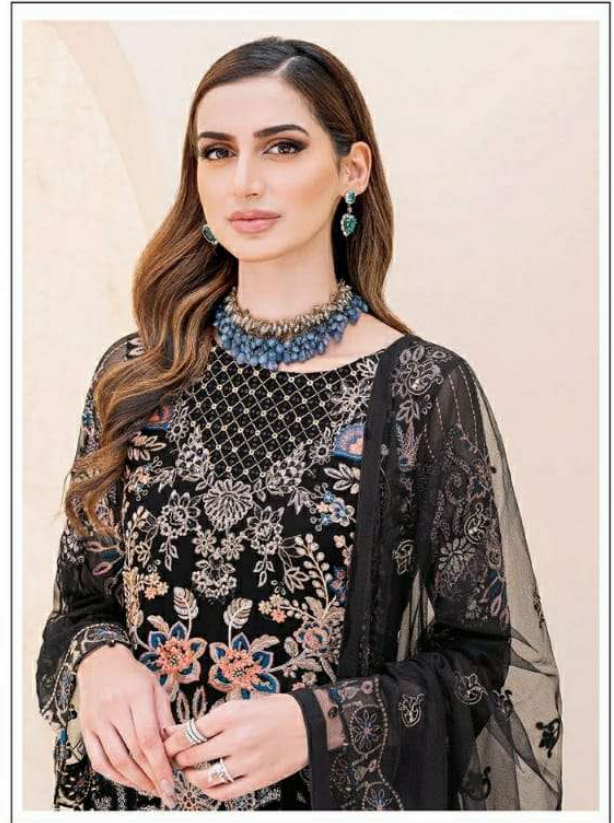
**TOP- HEAVY FOX GEROGETTE EMBROIDERED
WITH DAIMOND WORK**

M-253

BOTTOM- SANTOON WITH WORK

**DUPATTA/NET- BUTTERFLY NET WITH
EMBROIDERY WORK**

- ☉ DRY CLEAN ONLY.
- ☒ DO NOT USE ANY BLEACH OR STAIN REMOVING CHEMICAL.
- ☒ IRON THE FABRIC AT MODERATE TEMPERATURE.



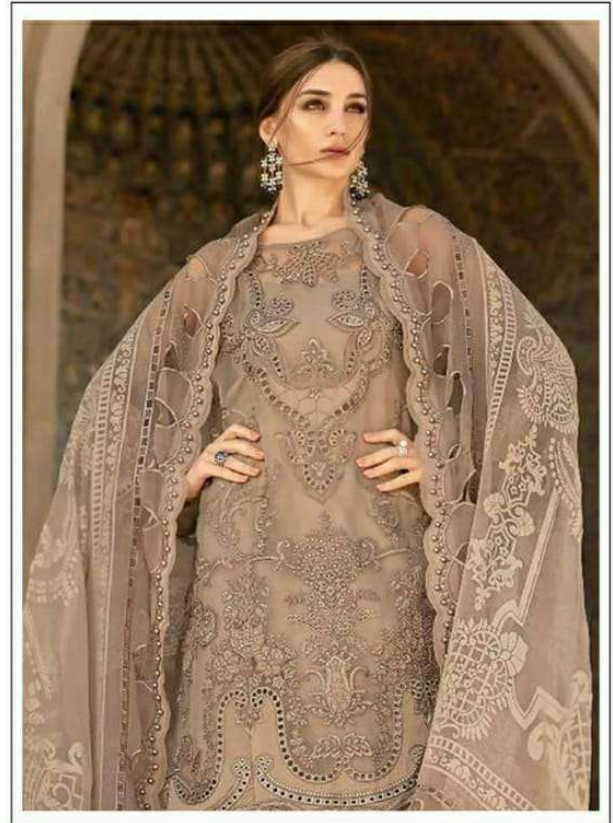
**TOP- HEAVY FOX GEROGETTE EMBROIDERED
WITH DAIMOND WORK**

M-253

BOTTOM- SANTOON WITH WORK

**DUPATTA/NET- BUTTERFLY NET WITH
EMBROIDERY WORK**

- ☉ DRY CLEAN ONLY.
- ☒ DO NOT USE ANY BLEACH OR STAIN REMOVING CHEMICAL.
- ☒ IRON THE FABRIC AT MODERATE TEMPERATURE.



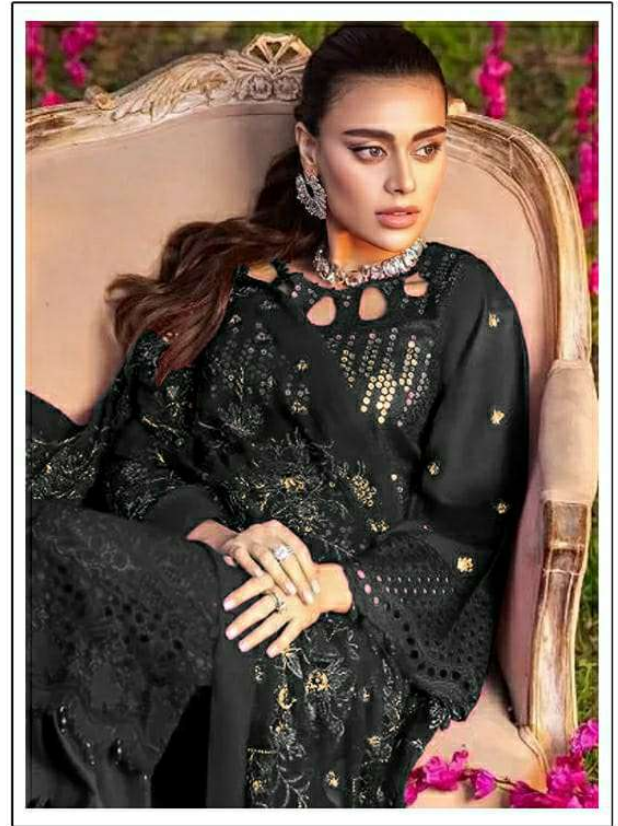
**TOP- CAMBRIC COTTON BORING WORK
WITH HEAVY EMBROIDERY**

M-221

BOTTOM/INNER- SEMI COTTON

**DUPATTA/NET- TABBY SILK DIGITAL
PRINTED/ MAL MAL DIGITAL PRINTED DUPTA
WITH WORK**

- ☉ DRY CLEAN ONLY.
- ✘ DO NOT USE ANY BLEACH OR STAIN REMOVING CHEMICAL.
- ☎ IRON THE FABRIC AT MODERATE TEMPERATURE.



TOP- FOX GEORGETTE WITH CHIKAN EMBROIDERY
WORK WITH 9 MM SIQUANCE (M-134 A)

BOTTOM/INER - SANTOON

DUPATTA - NET WITH WORK

☉ DRY CLEAN ONLY.
✗ DO NOT USE ANY BLEACH OR STAIN REMOVING CHEMICAL.
☎ IRON THE FABRIC AT MODERATE TEMPERATURE.



TOP- CAMBRIC COTTON WITH EMBROIDERY WORK

M-254

BOTTOM- SEMI LAWN

DUPATTA/NET- BUTTERFLY NET WITH EMBROIDERY WORK

-  DRY CLEAN ONLY.
-  DO NOT USE ANY BLEACH OR STAIN REMOVING CHEMICAL.
-  IRON THE FABRIC AT MODERATE TEMPERATURE.



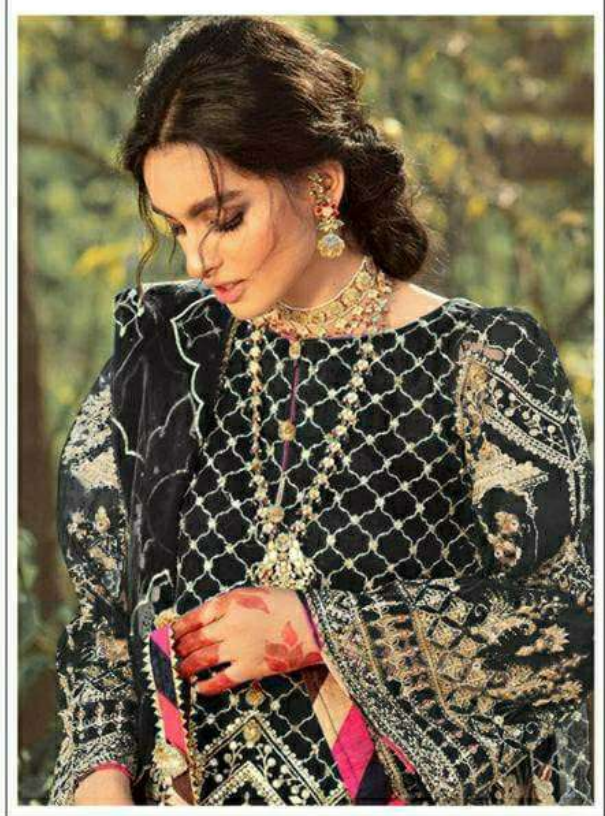
TOP- CAMBRIC COTTON BORING WORK WITH HEAVY EMBROIDERY

M-220

BOTTOM/INNER- SEMI COTTON

DUPATTA/NET- TABBY SILK DIGITAL PRINTED/ MAL MAL DIGITAL PRINTED DUPTA

-  DRY CLEAN ONLY.
-  DO NOT USE ANY BLEACH OR STAIN REMOVING CHEMICAL.
-  IRON THE FABRIC AT MODERATE TEMPERATURE.



TOP- DULL ORGANZA WITH HEAVY EMBROIDERY

M-217

BOTTOM/INNER- SANTOON

DUPATTA/NET- ORGANZA WITH WORK WITH 4 SIDE CUT WORK LACE

-  DRY CLEAN ONLY.
-  DO NOT USE ANY BLEACH OR STAIN REMOVING CHEMICAL.
-  IRON THE FABRIC AT MODERATE TEMPERATURE.



TOP- DULL ORGANZA WITH HEAVY EMBROIDERY (M-207 B)

BOTTOM/INNER- SANTOON

**DUPATTA- ORGANZA WITH WORK WITH
4 SIDE CUT WORK LACE**



- ☉ DRY CLEAN ONLY.
- ✘ DO NOT USE ANY BLEACH OR STAIN REMOVING CHEMICAL.
- ☎ IRON THE FABRIC AT MODERATE TEMPERATURE.



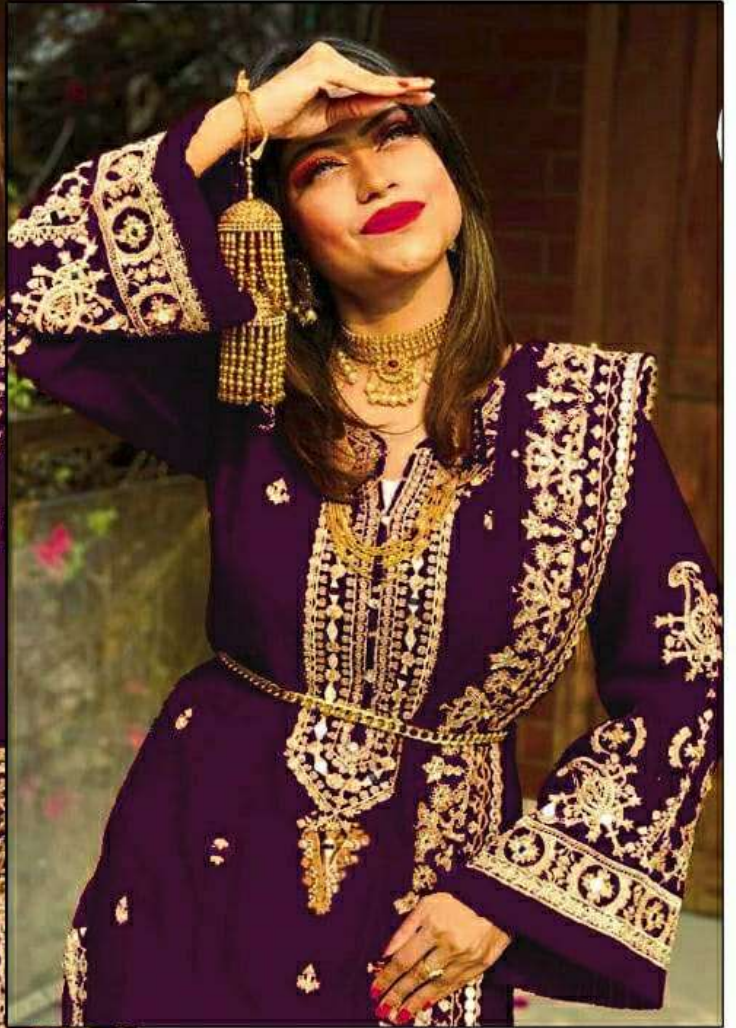
TOP- CAMBRIC COTTON WITH HEVY EMBROIDERY

M-232

BOTTOM/INNER- SEMILOWN

DUPATTA/NET- HEVY NET WITH EMBROIDERY WORK

-  **DRY CLEAN ONLY.**
-  **DO NOT USE ANY BLEACH OR STAIN REMOVING CHEMICAL.**
-  **IRON THE FABRIC AT MODERATE TEMPERATURE.**



TOP- HEAVY FOX GEORGETTE EMBROIDERY
REAL GLASS MIRROR WITH MOTI
BOTTOM - SANTOON
INNER - SANTOON WITH WORK
DUPATTA - HEAVY GEORGETTE
HEAVY EMBROIDERY REAL GLASS MIRROR.

M-108-A

☞ DRY CLEAN ONLY.
☞ DO NOT USE ANY BLEACH OR STAIN REMOVING CHEMICAL.
☞ IRON THE FABRIC AT MODERATE TEMPERATURE.



TOP- DULL ORGANZA WITH HEAVY EMBROIDERY WITH MOTI WORK

BOTTOM/INER- SANTOON

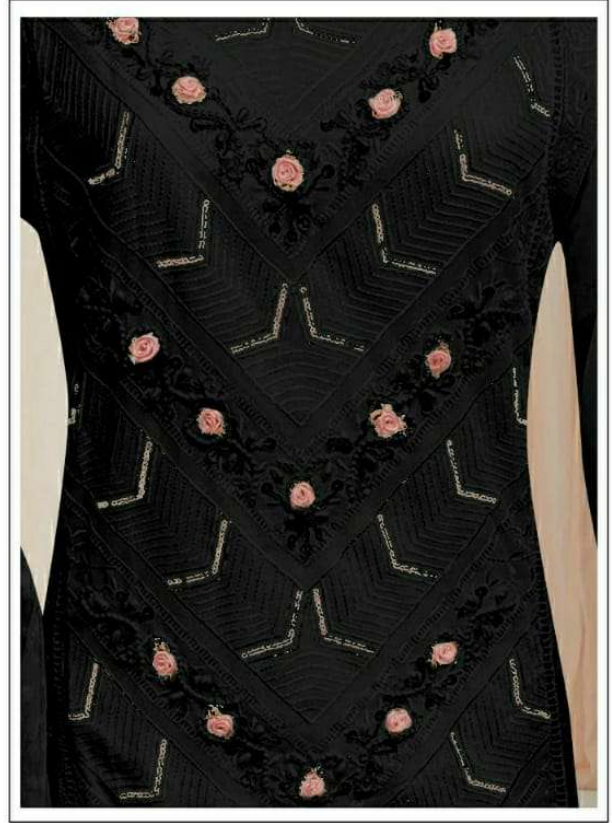
DUPATTA - BUTTERFLY NET WITH WORK WITH 4 SIDE CUT WORK LACE

(M-177-C)

☉ DRY CLEAN ONLY.

☒ DO NOT USE ANY BLEACH OR STAIN REMOVING CHEMICAL.

☒ IRON THE FABRIC AT MODERATE TEMPERATURE.



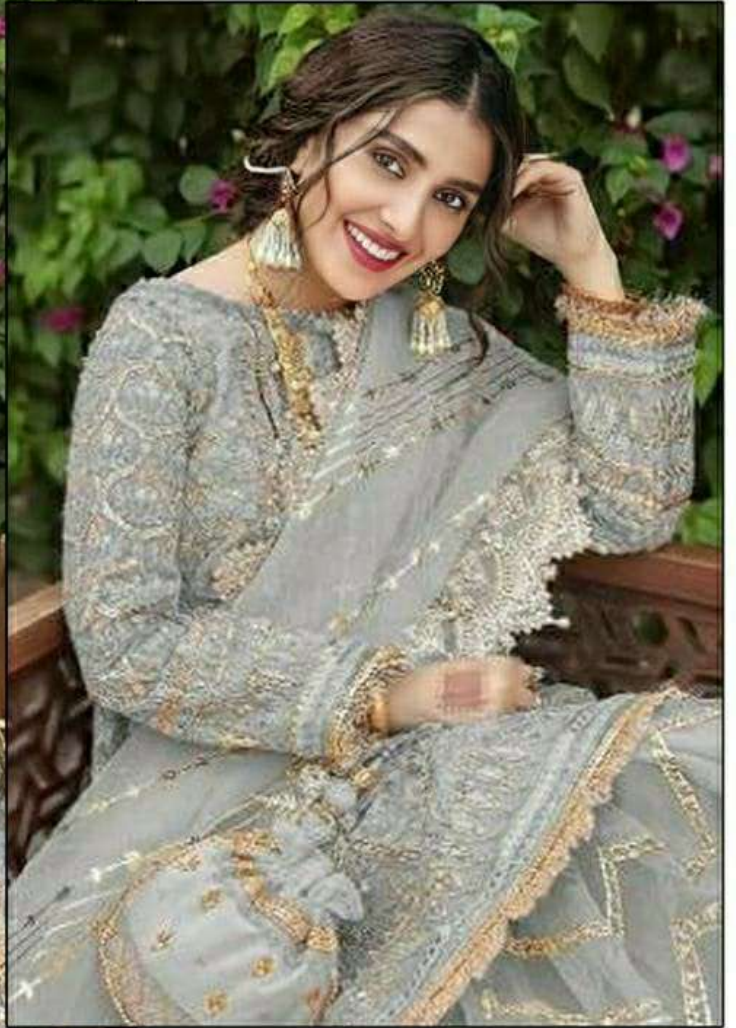
TOP- JORJAT EMBROIDERY WITH KHATLI WORK (M-216 C)

BOTTOM/INNER- SANTOON

DUPATTA- NAJMEEN WITH WORK



- ☉ DRY CLEAN ONLY.
- ☒ DO NOT USE ANY BLEACH OR STAIN REMOVING CHEMICAL.
- ☒ IRON THE FABRIC AT MODERATE TEMPERATURE.



M-121 E



Ⓢ DRY CLEAN ONLY.
Ⓢ DO NOT USE ANY BLEACH OR STAIN REMOVING CHEMICAL.
Ⓢ IRON THE FABRIC AT MODERATE TEMPERATURE.



TOP- CAMBRIC COTTON WITH EMBROIDERY WORK

M-251

BOTTOM- SEMI LAWN

DUPATTA/NET- BUTTERFLY NET WITH EMBROIDERY WORK

- ☑ DRY CLEAN ONLY.
- ☒ DO NOT USE ANY BLEACH OR STAIN REMOVING CHEMICAL.
- ☑ IRON THE FABRIC AT MODERATE TEMPERATURE.



M-121 A



Ⓢ DRY CLEAN ONLY.
Ⓢ DO NOT USE ANY BLEACH OR STAIN REMOVING CHEMICAL.
Ⓢ IRON THE FABRIC AT MODERATE TEMPERATURE.