



**TOP- HEAVY JORJAT WITH EMBROIDERY
WORK WITH FENCY LATKAN PEKET**

M-205 C

BOTTOM/INNER- SANTOON

**DUPATTA- BUTTER FLY NET
EMBROIDERY WORK**

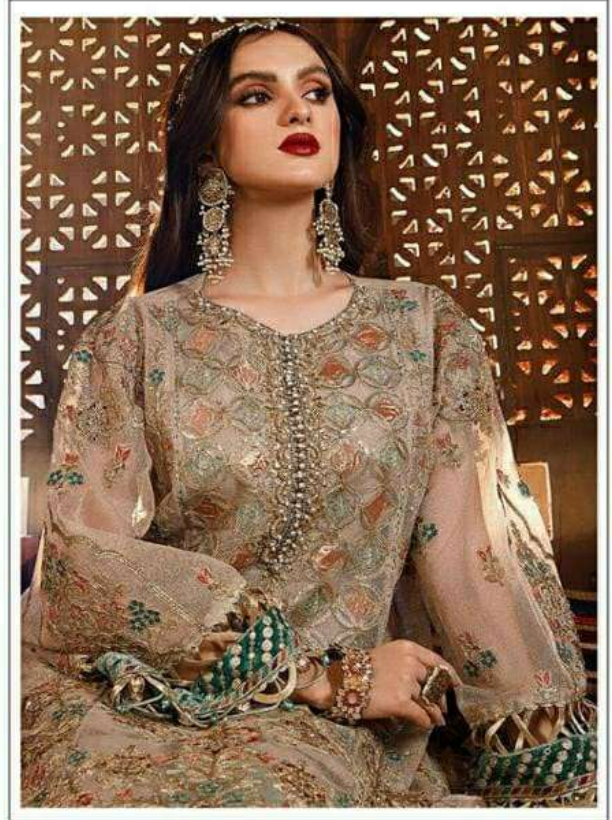
☉ DRY CLEAN ONLY.
⊗ DO NOT USE ANY BLEACH OR STAIN REMOVING CHEMICAL.
☎ IRON THE FABRIC AT MODERATE TEMPERATURE.



M-131



- Ⓢ DRY CLEAN ONLY.
- ✘ DO NOT USE ANY BLEACH OR STAIN REMOVING CHEMICAL.
- ☐ IRON THE FABRIC AT MODERATE TEMPERATURE.



TOP- DULL ORGANZA WITH HEAVY EMBROIDERY

M-199

BOTTOM/INNER- SANTOON

DUPATTA/NET- ORGANZA WITH WORK

-  DRY CLEAN ONLY.
-  DO NOT USE ANY BLEACH OR STAIN REMOVING CHEMICAL.
-  IRON THE FABRIC AT MODERATE TEMPERATURE.



**TOP:- PURE DULL ORGANZA EMBROIDERED WORK
WITH MOTI WORK**
BOTTOMINNER:- SANTOON
**DUPATTA:- PURE ORGANZA WITH EMBROIDERED WORK
WITH CUT WORK**



M-290 A



M-290 B



M-290 C



M-290 D



FEBRIC DETAIL

TOP:- PURE DULL ORGANZA EMBROIDERED WORK
WITH MOTI WORK
BOTTOM/INNER:- SANTOON WITH WORK
DUPATTA:- PURE Orngza WITH EMBROIDERY WORK
WITH CUTWORK



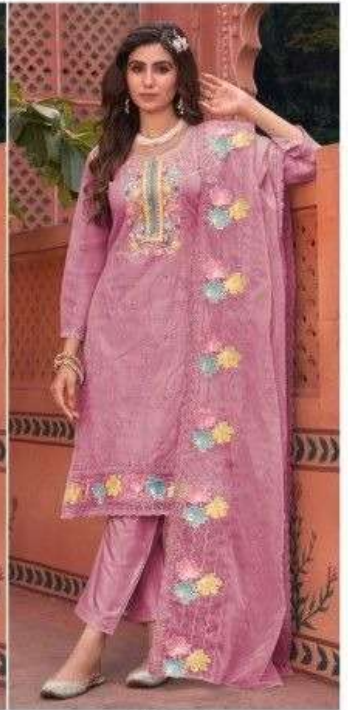
M-284 A



M-284 B



M-284 C



M-284 D



TOP- JORJAT WITH HEAVY EMBROIDERY (M-213 A)
BOTTOMINNER- SANTOON
DUPATTA- NET WITH WORK WITH 4SIDE CUT WORK LACE

☉ DRY CLEAN ONLY.
 ✕ DO NOT USE ANY BLEACH OR STAIN REMOVING CHEMICAL.
 ☰ IRON THE FABRIC AT MODERATE TEMPERATURE.



TOP- JORJAT WITH HEAVY EMBROIDERY (M-213 B)
BOTTOMINNER- SANTOON
DUPATTA- NET WITH WORK WITH 4SIDE CUT WORK LACE

☉ DRY CLEAN ONLY.
 ✕ DO NOT USE ANY BLEACH OR STAIN REMOVING CHEMICAL.
 ☰ IRON THE FABRIC AT MODERATE TEMPERATURE.



TOP- JORJAT WITH HEAVY EMBROIDERY (M-213 C)
BOTTOMINNER- SANTOON
DUPATTA- NET WITH WORK WITH 4SIDE CUT WORK LACE

☉ DRY CLEAN ONLY.
 ✕ DO NOT USE ANY BLEACH OR STAIN REMOVING CHEMICAL.
 ☰ IRON THE FABRIC AT MODERATE TEMPERATURE.



TOP- JORJAT WITH HEAVY EMBROIDERY (M-213 D)
BOTTOMINNER- SANTOON
DUPATTA- NET WITH WORK WITH 4SIDE CUT WORK LACE

☉ DRY CLEAN ONLY.
 ✕ DO NOT USE ANY BLEACH OR STAIN REMOVING CHEMICAL.
 ☰ IRON THE FABRIC AT MODERATE TEMPERATURE.



TOP- ORGENZA WITH EMBROIDERY

M-236 D

BOTTOM/INNER- SANTOON

DUPATTA/NET- BUTTERFLY NET WITH EMBROIDERY



-  DRY CLEAN ONLY.
-  DO NOT USE ANY BLEACH OR STAIN REMOVING CHEMICAL.
-  IRON THE FABRIC AT MODERATE TEMPERATURE.



TOP- HEAVY FOX GEORGETTE WITH EMBROIDERED & DIAMOND MOTI

M-203 B

BOTTOM/INER- WORK

DUPATTA - HEAVY NET WITH HEAVY EMBROIDERY WORK

-  **DRY CLEAN ONLY.**
-  **DO NOT USE ANY BLEACH OR STAIN REMOVING CHEMICAL.**
-  **IRON THE FABRIC AT MODERATE TEMPERATURE.**



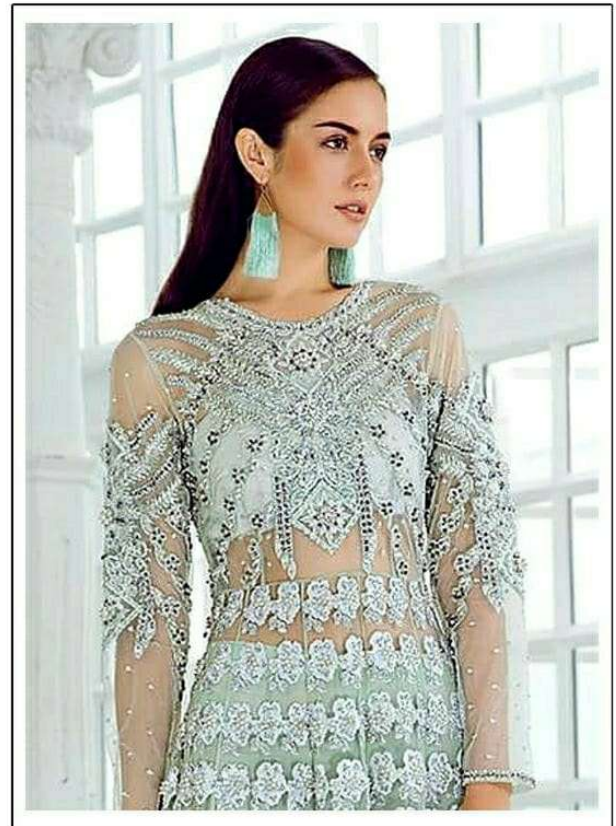
TOP- CAMBRIC COTTON WITH HEVY EMBROIDERY

M-235

BOTTOM/INNER- SEMILOWN

DUPATTA/NET- HEVY NET WITH EMBROIDERY WORK

- ☉ DRY CLEAN ONLY.
- ☒ DO NOT USE ANY BLEACH OR STAIN REMOVING CHEMICAL.
- ☒ IRON THE FABRIC AT MODERATE TEMPERATURE.



TOP- BUTTERFLY NET WITH HEAVY EMBROIDERY WORK

INER- SHANTOON

BOTTOM- PLAZO EMBROIDERY WORK WITH INER

DUPATTA- BUTTERFLY NET WITH EMBROIDERY WORK

M-114

- Ⓢ DRY CLEAN ONLY.
- ⓧ DO NOT USE ANY BLEACH OR STAIN REMOVING CHEMICAL.
- Ⓜ IRON THE FABRIC AT MODERATE TEMPERATURE.



TOP - HEAVY FOX GEORGETTE WITH EMBROIDERED & DIAMOND MOTI

BOTTOM - SANTOON

DUPATTA - HEAVY NAZMEEN WITH HEAVY EMBROIDERY WORK

M-215-B

☉ DRY CLEAN ONLY.
✗ DO NOT USE ANY BLEACH OR STAIN REMOVING CHEMICAL.
🔪 IRON THE FABRIC AT MODERATE TEMPERATURE.



**TOP- HEAVY JORJAT WITH EMBROIDERY
WORK WITH FENCY LATKAN PEKET**

M-205 C

BOTTOM/INNER- SANTOON

**DUPATTA- BUTTER FLY NET
EMBROIDERY WORK**

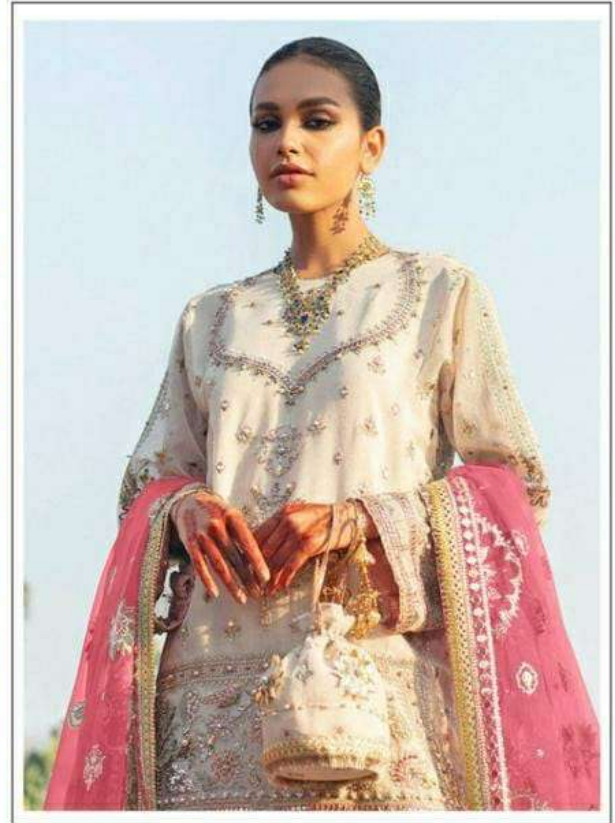
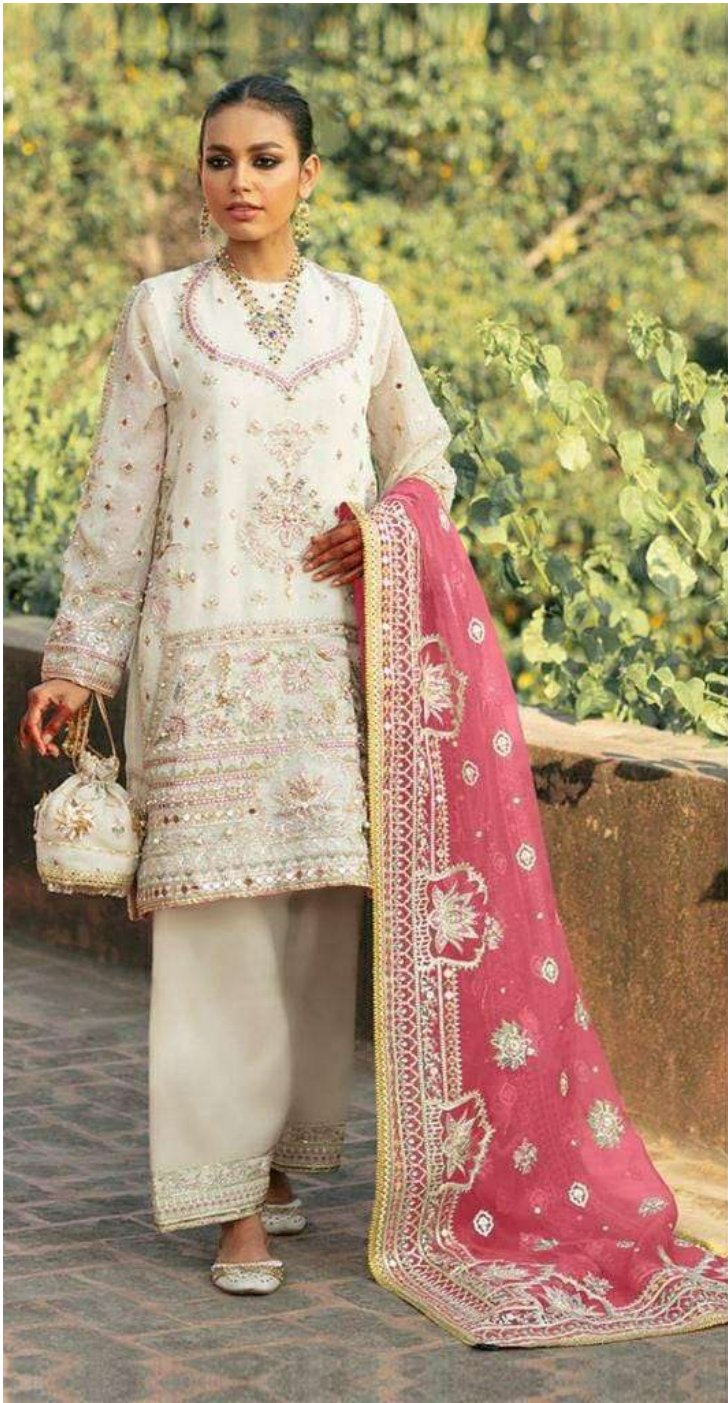
☉ DRY CLEAN ONLY.
⊗ DO NOT USE ANY BLEACH OR STAIN REMOVING CHEMICAL.
☎ IRON THE FABRIC AT MODERATE TEMPERATURE.



TOP- FOX GEORGETTE WITH EMBROIDERY
BOTTOM/INER- SANTOON
DUPATTA - BUTTERFLY NET WITH EMBROIDERY
PALLU WORK WITH 4 SIDE CUT WORK LACE

M-176-C

Ⓟ DRY CLEAN ONLY.
✘ DO NOT USE ANY BLEACH OR STAIN REMOVING CHEMICAL.
☎ IRON THE FABRIC AT MODERATE TEMPERATURE.



TOP- HEVY ORNGZA WITH HEVY EMBROIDERY WITH DIMOND MIRROR WRO

M-197 B

BOTTOM/INNER- SANTOON WITH WORK

DUPATTA/NET- HEVY ORNGZA WITH EMBROIDERY WITH DIMEND MIRROR WORK FOUR SIDE LESS

- ☑ DRY CLEAN ONLY.
- ☒ DO NOT USE ANY BLEACH OR STAIN REMOVING CHEMICAL.
- ☒ IRON THE FABRIC AT MODERATE TEMPERATURE.



TOP- DULL ORGANZA WITH HEAVY EMBROIDERY

M-219

BOTTOM/INNER- SANTOON

DUPATTA/NET- BUTTERFLY NET WITH EMBROIDERY

-  DRY CLEAN ONLY.
-  DO NOT USE ANY BLEACH OR STAIN REMOVING CHEMICAL.
-  IRON THE FABRIC AT MODERATE TEMPERATURE.