



**D.NO.239 B**

**TOP - CHINON SILK EMBROIDERED  
WITH JARKAN WORK**

**DUPATTA- CHINON EMBROIDERED**

**BOTTOM- HEAVY DULL SANTOON**

**INNER - HEAVY DULL SANTOON**



**CARE INTRUCTIONS**

- DRY CLEAN RECOMMENDED
- DO NOT OVEREXPOSE DAMP FABRIC TO STRONG SUNLIGHT
- DO NOT USE ANYTYPE OF BLEACH OR STAIN REMOVING CHEMICALS
- IRON AT MODERATE TEMPERATURE





D.No 239 A



D.No 239-B



D.No 239-C



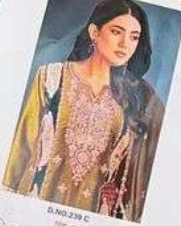


**D.NO.239 C**  
**TOP - CHINON SILK EMBROIDERED WITH JARKAN WORK**  
**DUPATTA - CHINON EMBROIDERED**  
**BOTTOM - HEAVY DULL SANTOON**  
**INNER - HEAVY DULL SANTOON**



**CARE INSTRUCTIONS**

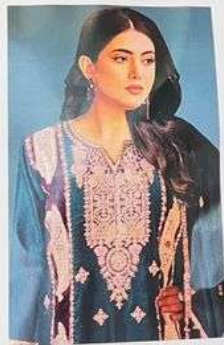
- 100% CLEAN RECOMMENDED
- DO NOT USE DRYER OR BLEACH
- IRON & STEAMER ALLOWED




**D.NO.239 C**  
 FOR UNUSUAL BRANDED WITH ABAH HANG  
 DESIGN BY CHINA EMBROIDER  
 MATERIAL: 100% COTTON  
 MADE IN CHINA



*Dinsaa*  
*Suit*



D.NO.238 B

TOP - CHINON SILK EMBROIDERED  
WITH JARKAN WORK

DUPATTA - CHINON EMBROIDERED

BOTTOM - HEAVY DULL SANTOON

INNER - HEAVY DULL SANTOON



CARE INSTRUCTIONS

DRY CLEAN ONLY

DO NOT IRON

DO NOT BLEACH

DO NOT TUMBLE DRY

DO NOT WASH

DO NOT DRY CLEAN

DO NOT STEAM

DO NOT WASH

DO NOT DRY CLEAN

DO NOT STEAM

DO NOT WASH

DO NOT DRY CLEAN

DO NOT STEAM

DO NOT WASH

DO NOT DRY CLEAN

DO NOT STEAM

DO NOT WASH

DO NOT DRY CLEAN

DO NOT STEAM

DO NOT WASH

DO NOT DRY CLEAN

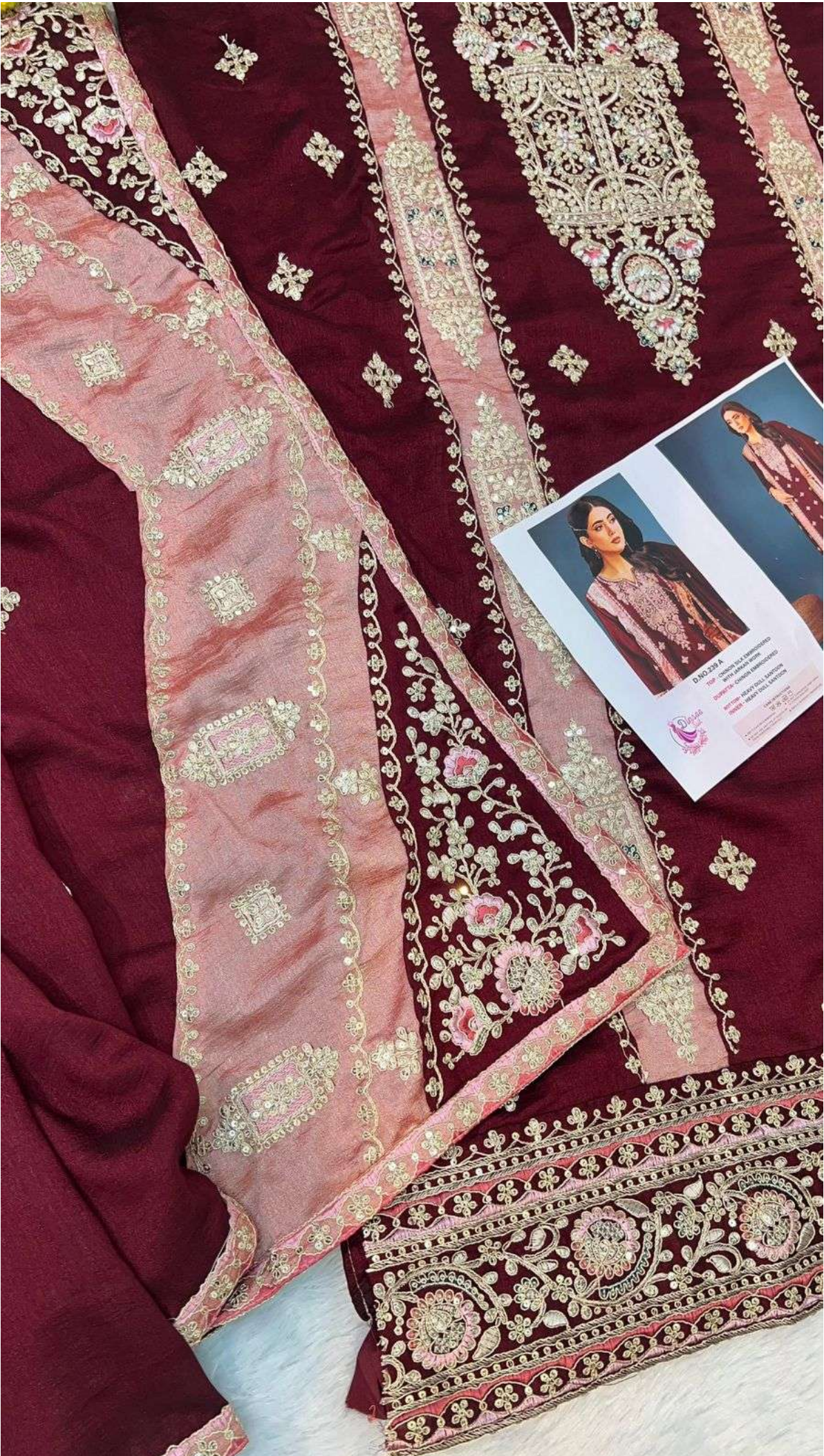
DO NOT STEAM



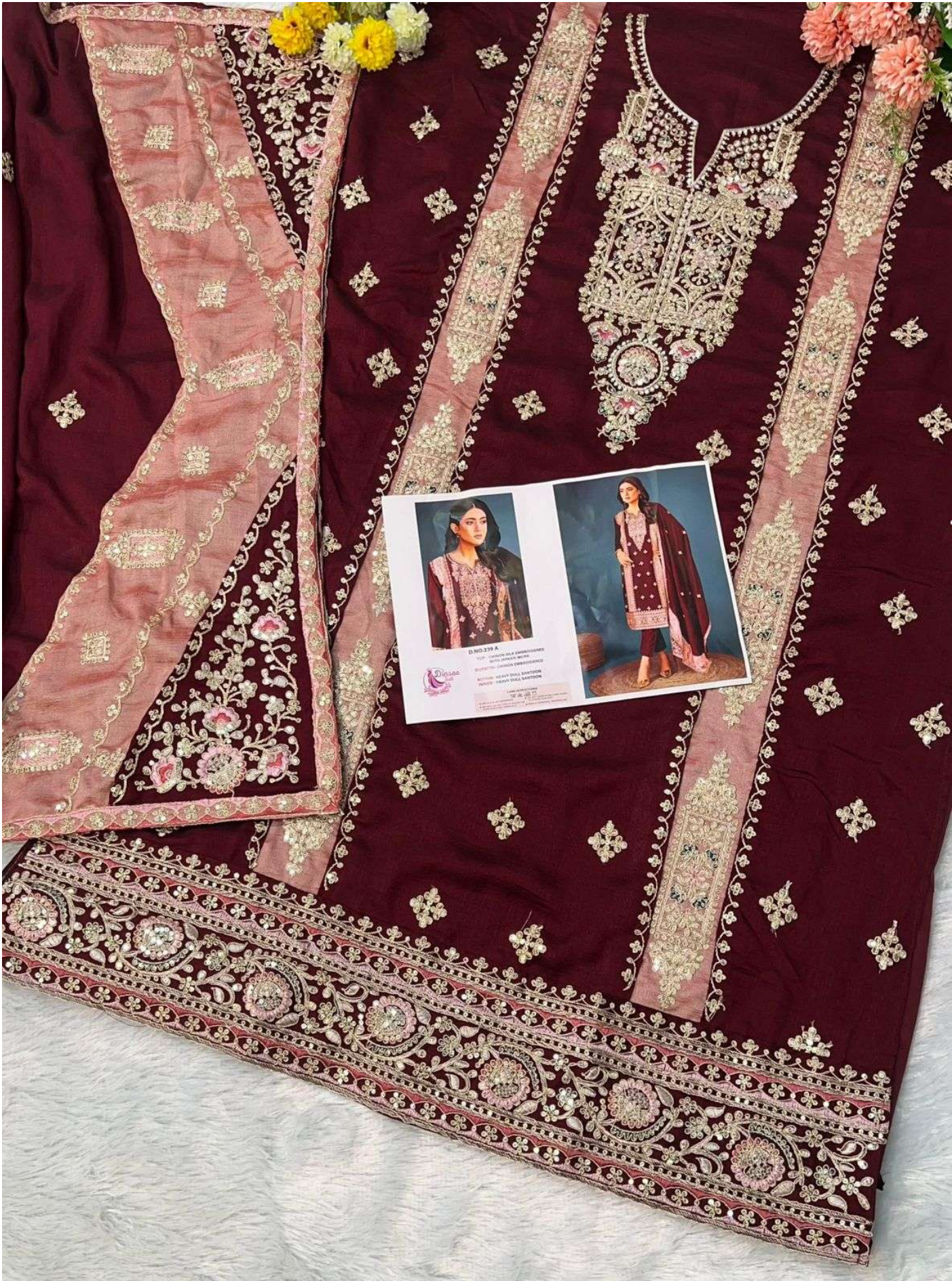




**Dinsaa**  
Suit

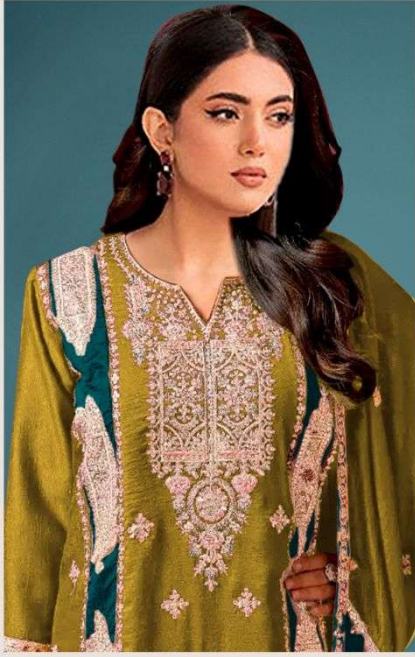


**D NO. 239 A**  
PINKISH SILK COMBINATION  
WITH ANKHA DESIGN  
WITH CASHMERE EMBROIDERY  
DESIGNER: MADE TO ORDER  
MADE IN INDIA  
100% CASHMERE  
100% SILK  
100% PINKISH SILK  
100% PINKISH SILK



**D.NO.239 A**  
TOP: LAMPWORK EMBROIDERED  
WITH JEWELRY WORK  
SHIRT: CAMEL EMBROIDERED  
BOTTOM: HEAVY DOLL BANTON  
SHAWL: HEAVY DOLL BANTON

MADE IN PAKISTAN



**D.NO.239 C**

**TOP - CHINON SILK EMBROIDERED  
WITH JARKAN WORK**

**DUPATTA- CHINON EMBROIDERED**

**BOTTOM- HEAVY DULL SANTOON**

**INNER - HEAVY DULL SANTOON**



**CARE INTRUCTIONS**

- DRY CLEAN RECOMMENDED
- DO NOT OVEREXPOSE DAMP FABRIC TO STRONG SUNLIGHT
- DO NOT USE ANYTYPE OF BLEACH OR STAIN REMOVING CHEMICALS
- IRON AT MODERATE TEMPERATURE





**D.NO.239 B**

**TOP - CHINON SILK EMBROIDERED  
WITH JARKAN WORK**

**DUPATTA- CHINON EMBROIDERED**

**BOTTOM- HEAVY DULL SANTOON**

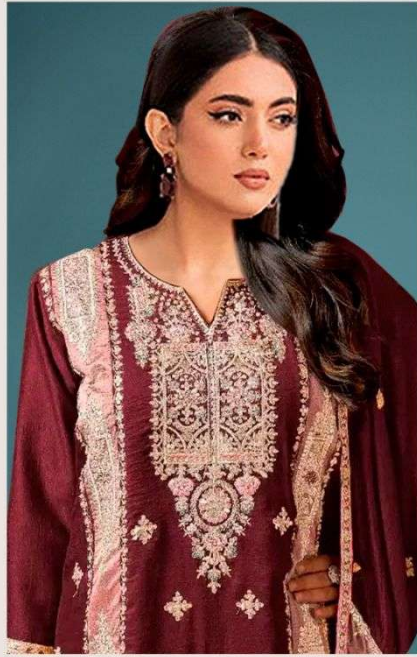
**INNER - HEAVY DULL SANTOON**



**CARE INTRUCTIONS**

- DRY CLEAN RECOMMENDED
- DO NOT OVEREXPOSE DAMP FABRIC TO STRONG SUNLIGHT
- DO NOT USE ANYTYPE OF BLEACH OR STAIN REMOVING CHEMICALS
- IRON AT MODERATE TEMPERATURE





**D.NO.239 A**

**TOP - CHINON SILK EMBROIDERED  
WITH JARKAN WORK**

**DUPATTA- CHINON EMBROIDERED**

**BOTTOM- HEAVY DULL SANTOON**

**INNER - HEAVY DULL SANTOON**



**CARE INTRUCTIONS**

- DRY CLEAN RECOMMENDED
- DO NOT OVEREXPOSE DAMP FABRIC TO STRONG SUNLIGHT
- DO NOT USE ANYTYPE OF BLEACH OR STAIN REMOVING CHEMICALS
- IRON AT MODERATE TEMPERATURE

