





*Discovering majestic*  
charm in the red

Join the timeless craftsmanship and style evolution with the red.



FASHIONS FADE, STYLE'S ETERNAL  
23512

FABRIC: CREPE SILK GEORGETTE

DESIGN NO	SAREE FABRIC	BLOUSE FABRIC	Work	Belt	CUSTZ.(SEMISTITCH/UN-STITCH)	BLOUSE SIZE
23508	Crepe satin silk	Satin Silk	Texture with Cord & Sequence Embroidered and Stone work	Available	UN-stitched Blouse	0.80 mtr
23509	Banarasi Crush silk	Net	Cord, Thread & Foil Embroidered with Stone work	NA	UN-stitched Blouse	0.80 mtr
23510	Crepe satin silk	Banglari Silk	Applique work with Cord, Sequence Embroidered & Stone Work	NA	UN-stitched Blouse	0.80 mtr
23512	Crepe Silk Georgette	Net	Texture with Cord, Sequence Embroidered & Stone work	Available	stitched Blouse	up to 38 Inch with margin of 42 inch
23514	Crepe satin silk	Organza Silk	Cord & Sequence Embroidered with Applique & Stone work	NA	UN-stitched Blouse	0.80 mtr
23515	Crepe satin silk	Organza Silk	Cord & Sequence Embroidered with Stone work	NA	UN-stitched Blouse	0.80 mtr
23516	Crepe satin silk	Malai Satin	Cord & Sequence Embroidered with Stone work	NA	UN-stitched Blouse	0.80 mtr
23517	Tusser Silk	Satin Crepe Silk	Cord & Sequence Embroidered with Stone work	NA	UN-stitched Blouse	0.80 mtr
23519	Two Tone Georgette Silk	Malai Satin	Sequence Embroidered with Stone work	NA	UN-stitched Blouse	0.80 mtr
23520	Pure Crepe Georgette	Banglari Silk	Cord & Sequence Embroidered with Stone work	NA	UN-stitched Blouse	0.80 mtr
23522	Crepe satin silk	Satin Crepe Silk	Cord & Sequence Embroidered with Stone work	NA	UN-stitched Blouse	0.80 mtr



23514B

Fabric : Crepe Satin Silk



23509B

Fabric : Banarasi Crush Silk





THE SERENE  
AURA OF WINE  
AND PURPLE  
RADIATES A  
COMMANDING  
STYLE.

FASHIONS FADE, STYLES ETERNAL  
23508

FABRIC: CREPE SATIN SILK

*When Style Meets Impression:*  
A Beautiful Fusion.

Step into a world where style and impression fuse beauty harmoniously.



23520

FABRIC: PURE CREPE GEORGETTE





MOHMANTHAN™



MAHOTSAV  
GROUP

*Majestica*

Shining Blue



A perfect wardrobe choice, where grace meets fashion, a feminist statement.



*Your Style's Refined Melody.*



FABRIC: CREPE SATIN SILK

Be a Show Stopper  
in *Delicate Hues*



These beautiful drapes shine not just with design but also with intricate smiles.



FASHION MADE, STYLE IS ETERNAL  
23517

FABRIC: TUSSER SILK

The art of capturing the soul  
in radiant crepe satin silk

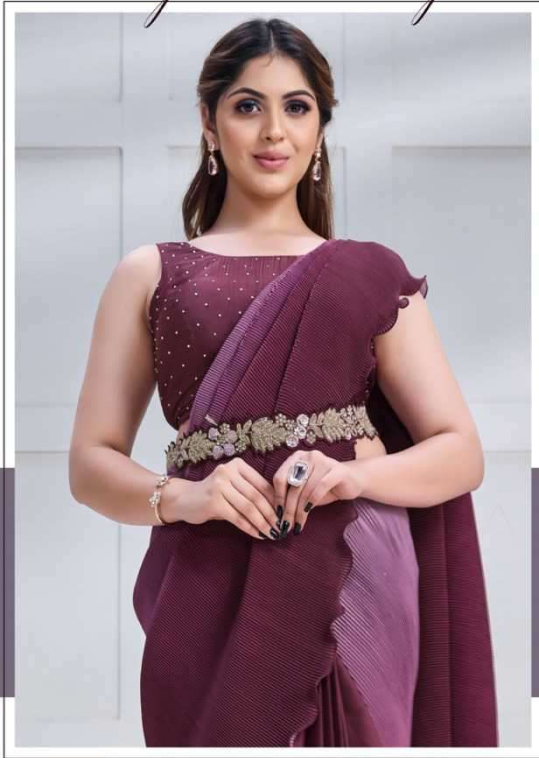
With fervent vibrancy, this saree leads us on a captivating voyage.



FASHIONS FADE, STYLE IS ETERNAL  
23510

FABRIC: CREPE SATIN SILK

GET WRAPPED IN  
*Majestic Beauty*




THIS  
WINE-COL-  
ORED SAREE  
WITH A HINT  
OF LIGHT  
PURPLE  
EXUDES  
GRACE AND  
CHARISMA.

FASHIONS MADE STYLE IS ETERNAL  
23508

FABRIC: CREPE SATIN SILK



A fashion advertisement featuring two women standing side-by-side. The woman on the left is wearing a dark green saree with intricate floral embroidery and a matching blouse. The woman on the right is wearing a maroon saree with elaborate silver and gold embroidery and a matching blouse. They are both wearing jewelry, including earrings, necklaces, and rings. The background is a soft, ethereal floral pattern in shades of blue and green. The text is positioned on the left side of the image.

## Draped in Tandem: Dual Sophistication Unveiled

Hold the dual essence of fashion and style, blending elegance with  
charm, and sophistication with vibrant allure.





A shade of Yellow, and the glow of  
*Banarasi silk Everywhere*



ELEGANCE  
REINVENTED  
IN THIS  
VIBRANT  
YELLOW  
SAREE  
FUSING  
VIBRANCY  
AND REFINEMENT



FABRIC: BANARASI CRUSH SILK



MOHMAN THAN™



# Majestica

Unveiling the Inner  
*Majesty of Women.*

Welcome to 'Majestica', where the essence of fashion is woven with threads of emotion and grace. In the realm of ethnic wear, women embody a unique majesty, a regal beauty that transcends time. Our catalog is a testament to this regality, a tribute to the elegant stories that every lady carries with her, etching her journey in the world of style.

Under the brand of Mohmanthan, this catalog, in every intricate design, every vibrant hue, we find the echoes of a woman's emotions, her cultural heritage, and her innate charm.

'Majestica' is a celebration of this inner majesty, a reflection of the strength, the grace, and the enduring beauty that defines her essence. Thus, 'Majestica' is not just a catalog; it's a journey into the majestic world of women's ethnic wear, where stories are spun, and beauty reigns supreme.



*The fervent allure of  
rich brown shades.*



Fabric and elegance fuse, leaving a lasting impression in your style.



FABRIC: TWO TONE GEORGETTE SILK

WEAVING A  
TALE OF  
ARTISTRY, A  
TOUCH OF  
OPULENCE TO  
TIMELESS  
ELEGANCE.



It's her style's  
turn to shine now

FASHIONS FRADE, STYLE IS ETERNAL  
23522

FABRIC: CREPE SATIN SILK