

We™
women ethnics

A woman with long, wavy brown hair is the central figure. She is wearing large, gold-rimmed sunglasses and large, ornate silver earrings. Her outfit consists of a teal-colored top with intricate floral embroidery in pink, yellow, and white. A matching teal shawl with large pink and yellow floral prints is draped over her shoulders. She is also wearing a watch on her left wrist and several rings. The background is a solid dark red color. In the bottom left corner, there is a small decorative table with a vase of pink flowers and a small woven basket.

HERITAGE

We™
women ethnics

HERITAGE





ENTIRE LOOK



WeTM
women ethnics



HERITAGE
D.NO. 5306



.....SIMPLEST STYLE



WeTM
women ethnics



HERITAGE
D.NO. 5302



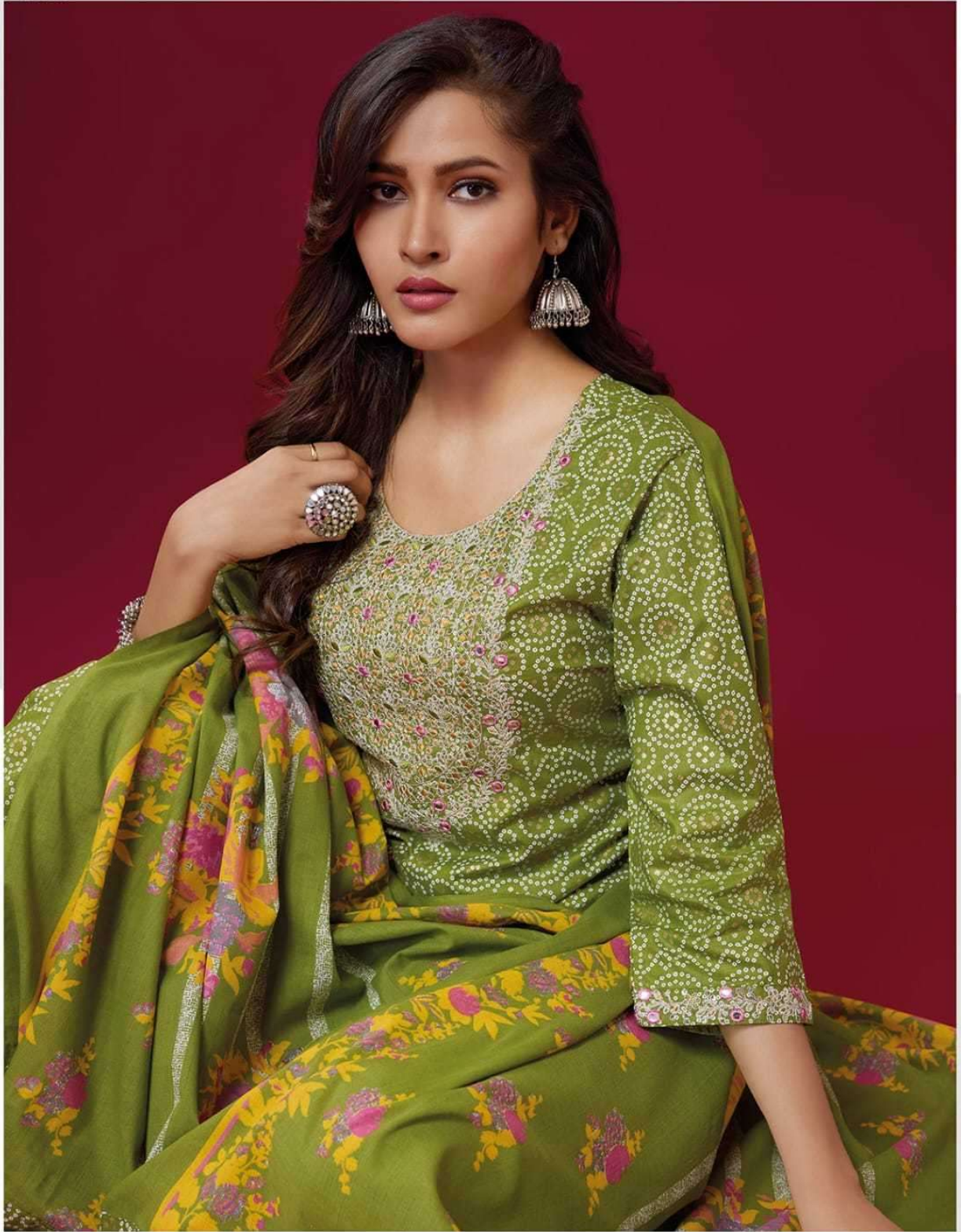
FRESH COLOR

We™
women ethnics



HERITAGE
D.NO. 5305





WeTM
women ethnics

A woman with long, wavy brown hair is the central figure. She is wearing large, gold-rimmed sunglasses and large, ornate silver earrings. Her outfit consists of a teal-colored top with intricate floral embroidery in pink, yellow, and white, and a matching teal shawl or dupatta with large, vibrant pink and yellow floral prints. She is also wearing a watch on her left wrist and several rings. The background is a solid, deep maroon color. In the bottom left corner, there is a small decorative table with a vase of pink flowers and a small woven basket.

HERITAGE



WeTM
women ethnics



Complimentary copy not for sale

The adornments & embellishments shown in photographs is purely for stylish purpose.the actual product will not include the accessories. Garment colour may slightly vary due to photographic lighting.

Email: we.womenethnics.com

WeTM
women ethnics



HERITAGE
D.NO. 5301

WeTM
women ethnics



HERITAGE
D.NO. 5304

We™
women ethnics



HERITAGE
D.NO. 5303