



43419

Fabric : Pure Viscose Silk



रिच टांगलडन dynalite रिचे

The dynamics of rich crimson folds with Organza Silk Saree, makes your traditional wear with superb modernity. Classic patterns evolve into contemporary elegance, narrating a compelling story.

43408
Fabric : Organza Silk



ಗೌಡೆ ಡಾಂಗೊಲೆಡಂಗ
ವೆಪುನಾಲಿಂ ರಿವೆಡೆ



The Red Maroon Organza Silk Saree is a canvas where classic and modern artistry coalesce. Vintage motifs seamlessly evolve into the language of today.



43408
Fabric: Organza Silk



43419

Fabric : Pure Viscose Silk

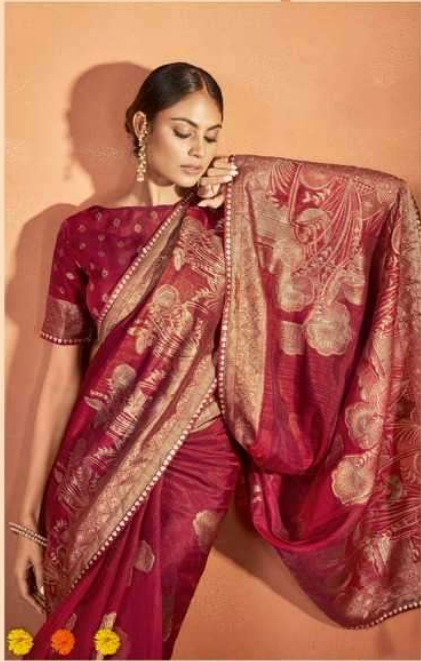


43418

Fabric : Grape Silk

NORITA-ROYAL 43400 PRADHA

SKU Code	Fabric		Length (m)		Work	Pattern	Usage	Fabric Care	Blouse
	Saree	Blouse	Saree	Blouse	Printed/Embroidered				
43408	Organza Silk	Silk Crepe	5.5	0.8	Stone Work	Woven Design	Ethnic	Dry clean only	unstitched Blouse Piece
43411	Kanjivaram two tone Silk	Silk Crepe	5.5	0.8	readymade & hand work lace	Woven Design	Ethnic	Dry clean only	unstitched Blouse Piece
43415	Kanjivaram two tone Silk	Silk Crepe	5.5	0.8	Sequence & Jari Work	Woven Design	Ethnic	Dry clean only	unstitched Blouse Piece
43417	Tusser Silk	Tusser Silk	5.5	0.8	Stone Work	Woven Design	Ethnic	Dry clean only	unstitched Blouse Piece
43419	Pure Viscose Weaved Silk	Brocade Silk	5.5	0.8	Resham , Zari and Cord embroidery	Woven Design	Ethnic	Dry clean only	unstitched Blouse Piece



તિલોલેટ્ટે રહે ડૉલ્કે ફારદે વેદેંગ

Within the aura of this traditional red saree, a woman's beauty blossoms with timeless elegance. Each drape embodies passion and grace, capturing the beauty, and making her radiant, inside and out.



43415

Fabric : Kanjivaram Two-Tone Silk



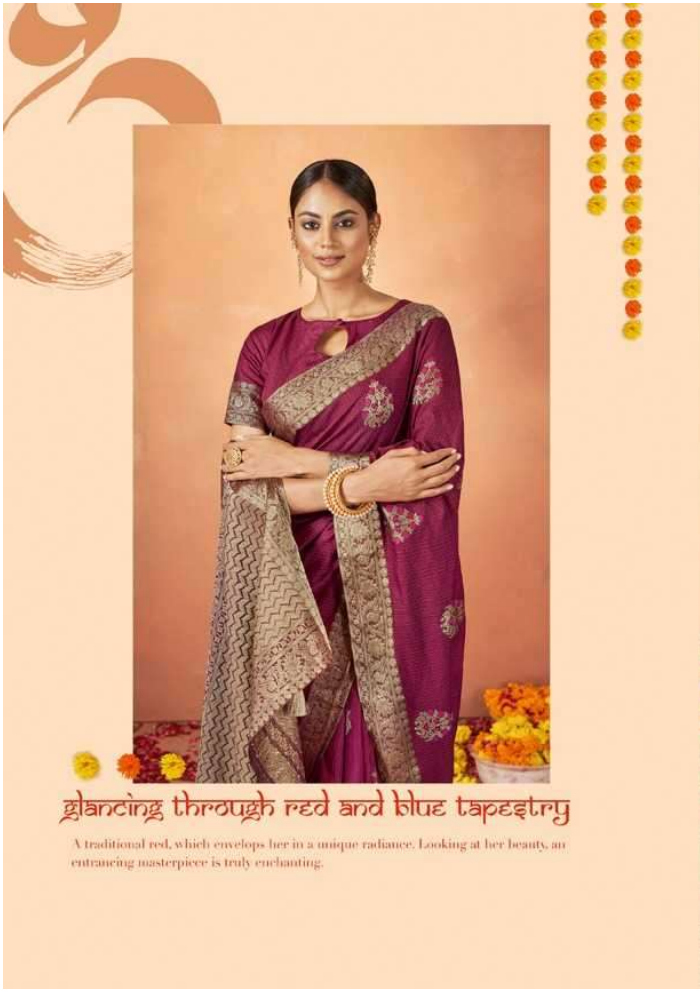
kanjivaramal इटालेट दोदकुण्टे

This beautiful saree in Kanjivaram Silk travels emotional depth within a woman. Every fold weaves a narrative of emotional allure, embodying a living testament to the depth of her emotional beauty.



43411

Fabric - Kanjivaram Two Tone Silk



glancing through red and blue tapestry

A traditional red, which envelops her in a unique radiance. Looking at her beauty, an entrancing masterpiece is truly enchanting.



43417
Fabric: Tussar Silk