

D.NO.239 A

**TOP - CHINON SILK EMBROIDERED
WITH JARKAN WORK**

DUPATTA- CHINON EMBROIDERED

BOTTOM- HEAVY DULL SANTOON

INNER - HEAVY DULL SANTOON



CARE INTRUCTIONS

- DRY CLEAN RECOMMENDED
- DO NOT OVEREXPOSE DAMP FABRIC TO STRONG SUNLIGHT
- DO NOT USE ANYTYPE OF BLEACH OR STAIN REMOVING CHEMICALS
- IRON AT MODERATE TEMPERATURE





D.NO.239 C
TOP - CHINON SILK EMBROIDERED
WITH JARKAN WORK
DUPATTA - CHINON EMBROIDERED
BOTTOM - HEAVY DULL SANTOON
INNER - HEAVY DULL SANTOON



CARE INSTRUCTIONS
• DO NOT USE DRYER OR BLEACH
• WASH WITH LIKE COLORS IN COLD WATER



 Dinsaa
Suit



D.No 239 A



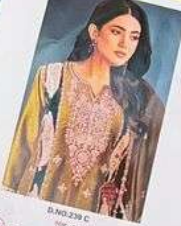
D.No 239-B



D.No 239-C



Dinsaa
Suit



D.NO.239 C
FOR UNUSUAL BRANDED WITH ABAJIA
DESIGN BY CHINA EMBROIDER
MATERIAL: 100% COTTON
MADE IN INDIA
D.NO.239 C

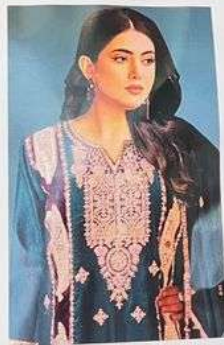


D NO. 239 A
FOR
DESIGNER: **MAHE TULLI LONDON**
MAHE TULLI LONDON

MAHE TULLI LONDON
100, 2nd Floor, Market Street, New Delhi, India
Phone: +91 11 2610 2222



Dinsaa
Suit



D.NO.238 B

TOP - CHINON SILK EMBROIDERED
WITH JARKAN WORK

DUPATTA - CHINON EMBROIDERED

BOTTOM - HEAVY DULL SANTOON

INNER - HEAVY DULL SANTOON



CARE INSTRUCTIONS

DRY CLEAN ONLY

DO NOT IRON

DO NOT BLEACH

DO NOT TUMBLE DRY

DO NOT WASH

DO NOT DRY CLEAN

DO NOT STEAM

DO NOT PRESS

DO NOT WASH

DO NOT DRY CLEAN

DO NOT STEAM

DO NOT PRESS

DO NOT WASH

DO NOT DRY CLEAN

DO NOT STEAM

DO NOT PRESS

DO NOT WASH

DO NOT DRY CLEAN

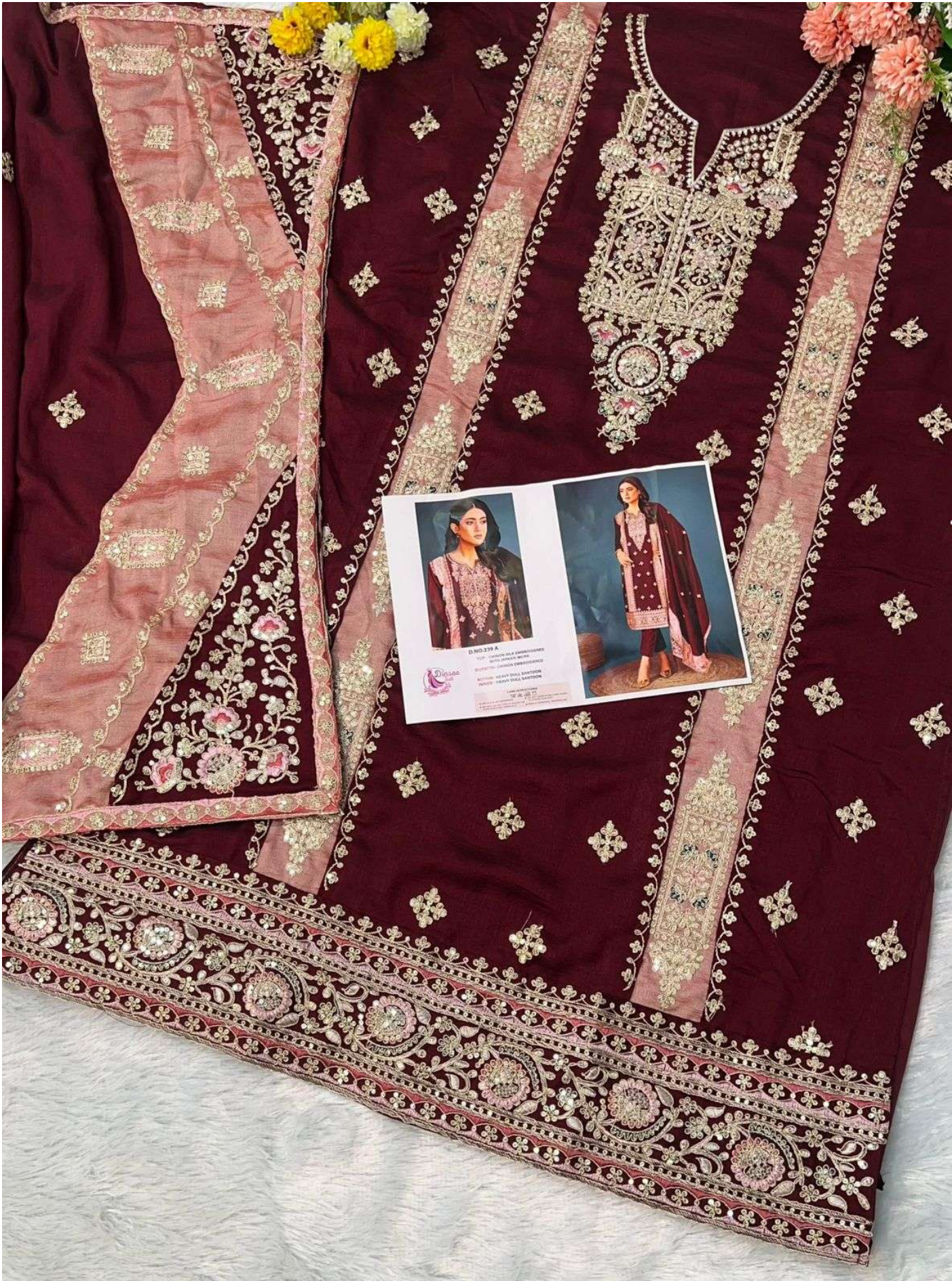
DO NOT STEAM

DO NOT PRESS

DO NOT WASH

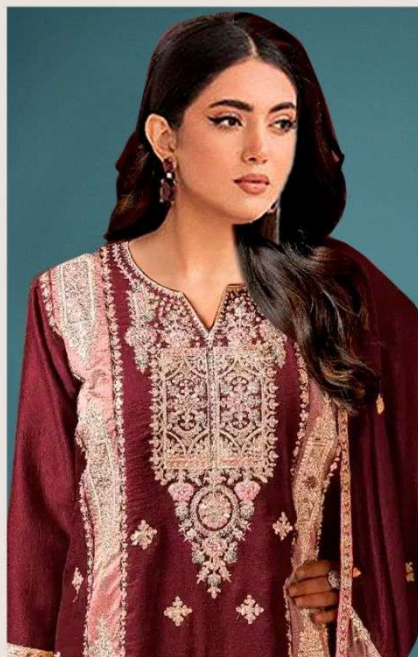
DO NOT DRY CLEAN

DO NOT STEAM



D.NO.239 A
TOP: LAMPWORK EMBROIDERED
WITH ZARDI WORK
SHIRT: LAMPWORK EMBROIDERED
BOTTOM: HEAVY DOLL BANTON
SHAWL: HEAVY DOLL BANTON

MADE IN PAKISTAN
© 2022



D.NO.239 A

**TOP - CHINON SILK EMBROIDERED
WITH JARKAN WORK**

DUPATTA- CHINON EMBROIDERED

BOTTOM- HEAVY DULL SANTOON

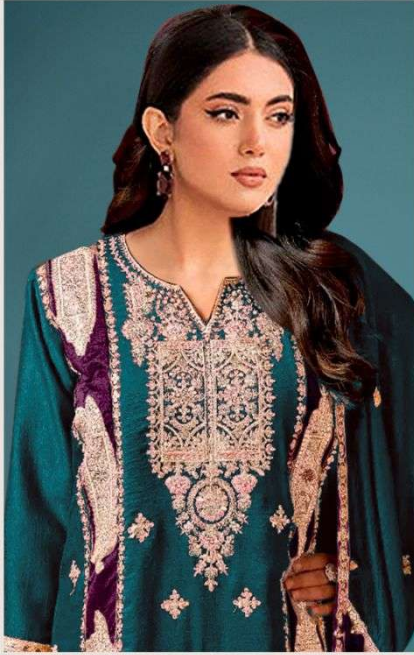
INNER - HEAVY DULL SANTOON



CARE INTRUCTIONS

- DRY CLEAN RECOMMENDED
- DO NOT OVEREXPOSE DAMP FABRIC TO STRONG SUNLIGHT
- DO NOT USE ANYTYPE OF BLEACH OR STAIN REMOVING CHEMICALS
- IRON AT MODERATE TEMPERATURE





D.NO.239 B

**TOP - CHINON SILK EMBROIDERED
WITH JARKAN WORK**

DUPATTA- CHINON EMBROIDERED

BOTTOM- HEAVY DULL SANTOON

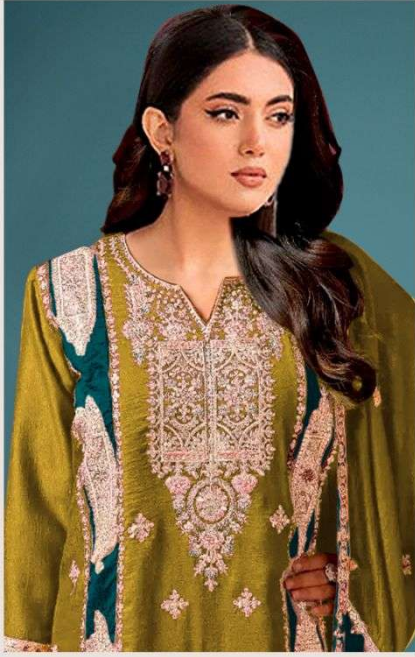
INNER - HEAVY DULL SANTOON



CARE INTRUCTIONS

- DRY CLEAN RECOMMENDED
- DO NOT OVEREXPOSE DAMP FABRIC TO STRONG SUNLIGHT
- DO NOT USE ANYTYPE OF BLEACH OR STAIN REMOVING CHEMICALS
- IRON AT MODERATE TEMPERATURE





D.NO.239 C

**TOP - CHINON SILK EMBROIDERED
WITH JARKAN WORK**

DUPATTA- CHINON EMBROIDERED

BOTTOM- HEAVY DULL SANTOON

INNER - HEAVY DULL SANTOON



CARE INTRUCTIONS

- DRY CLEAN RECOMMENDED
- DO NOT OVEREXPOSE DAMP FABRIC TO STRONG SUNLIGHT
- DO NOT USE ANYTYPE OF BLEACH OR STAIN REMOVING CHEMICALS
- IRON AT MODERATE TEMPERATURE

