

LILY&LALI<sup>®</sup>

GULS PRIDE

A PRODUCT OF *fiona*<sup>®</sup> GROUP



COTTON  
*Carnival*

LILY & LALI®  
GULS PRIDE  
A PRODUCT OF HIND GROUP

GLOMOURS BEAUTY



LILY&LALI<sup>®</sup>

GULS PRIDE

A PRODUCT OF *fiona*<sup>®</sup> GROUP



COTTON  
*Carnival*

LILY & LALI<sup>®</sup>

GULS PRIDE

A PRODUCT OF *friona*<sup>®</sup> GROUP

COTTON  
*Carnival*

## FABRICS DETAILS

: TOP :

BORED WHITE SCHIFFLI WORK AND HANDWORK  
ON CAMBRIC COTTON WITH COTTON LINING

: BOTTOM :

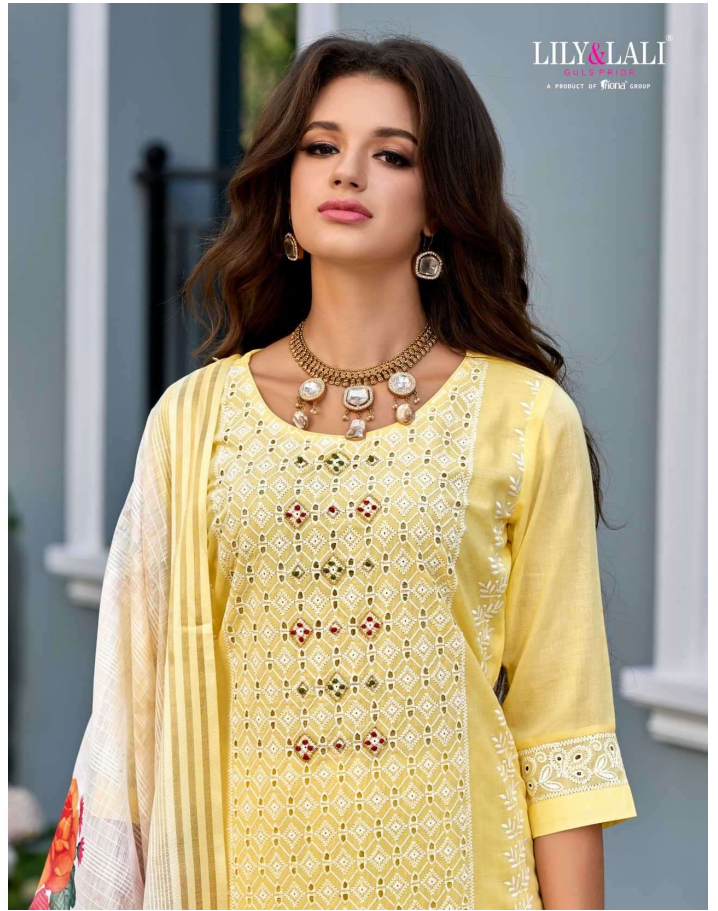
PURE VISCOUSE PANT WITH LACE AND  
STICHING'S PATTERN

: DUPATTA :

MUL COTTON PRINT DUPATTA (36") WITH  
LACE AND TUSSLE

SIZE : M, L, XL, XXL, 3XL

NOTE : POCKET IN SIDE THE PANT





LILY&LALI®  
GULS PRIDE  
A PRODUCT OF **WONKA** GROUP

COTTON  
*Carnival*



16801



16802



16803



16804



16805



16806



LILY & LALI<sup>®</sup>

GULS PRIDE

A PRODUCT OF THE LALI GROUP

THE LIFE OF THE *Queen*





LILY & LALI<sup>®</sup>  
GIRLS PRIDE  
A PRODUCT OF FIFONA GROUP

THE NEXT GENERATION *Muse*



LILY & LALI<sup>®</sup>  
GULS PRIDE  
A PRODUCT OF FICOLD GROUP



16805

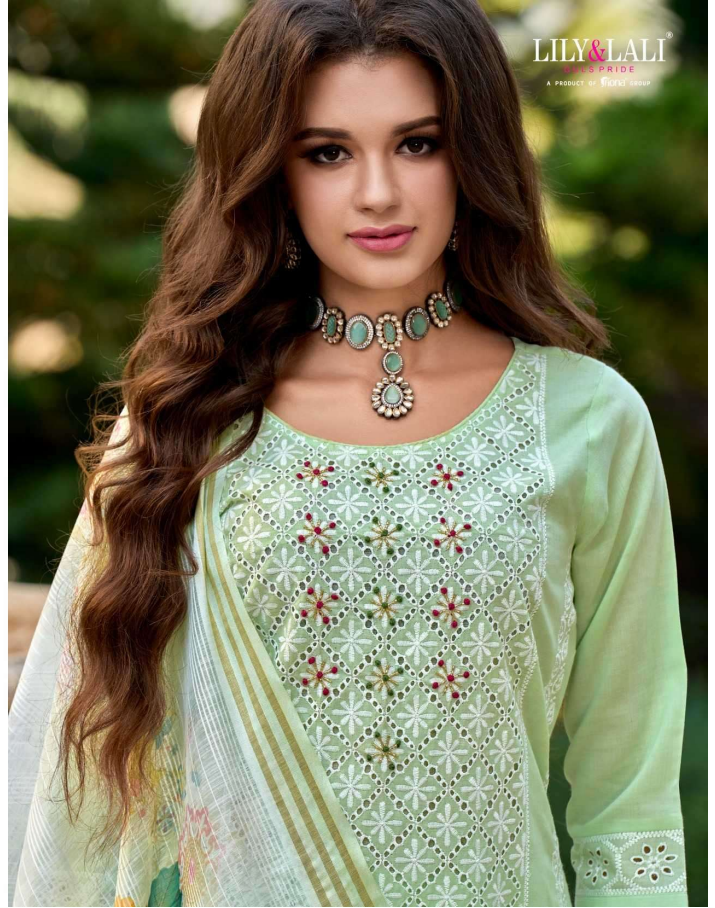






THE LIFE OF THE *Queen*









THE MODERN *Eachantress*





