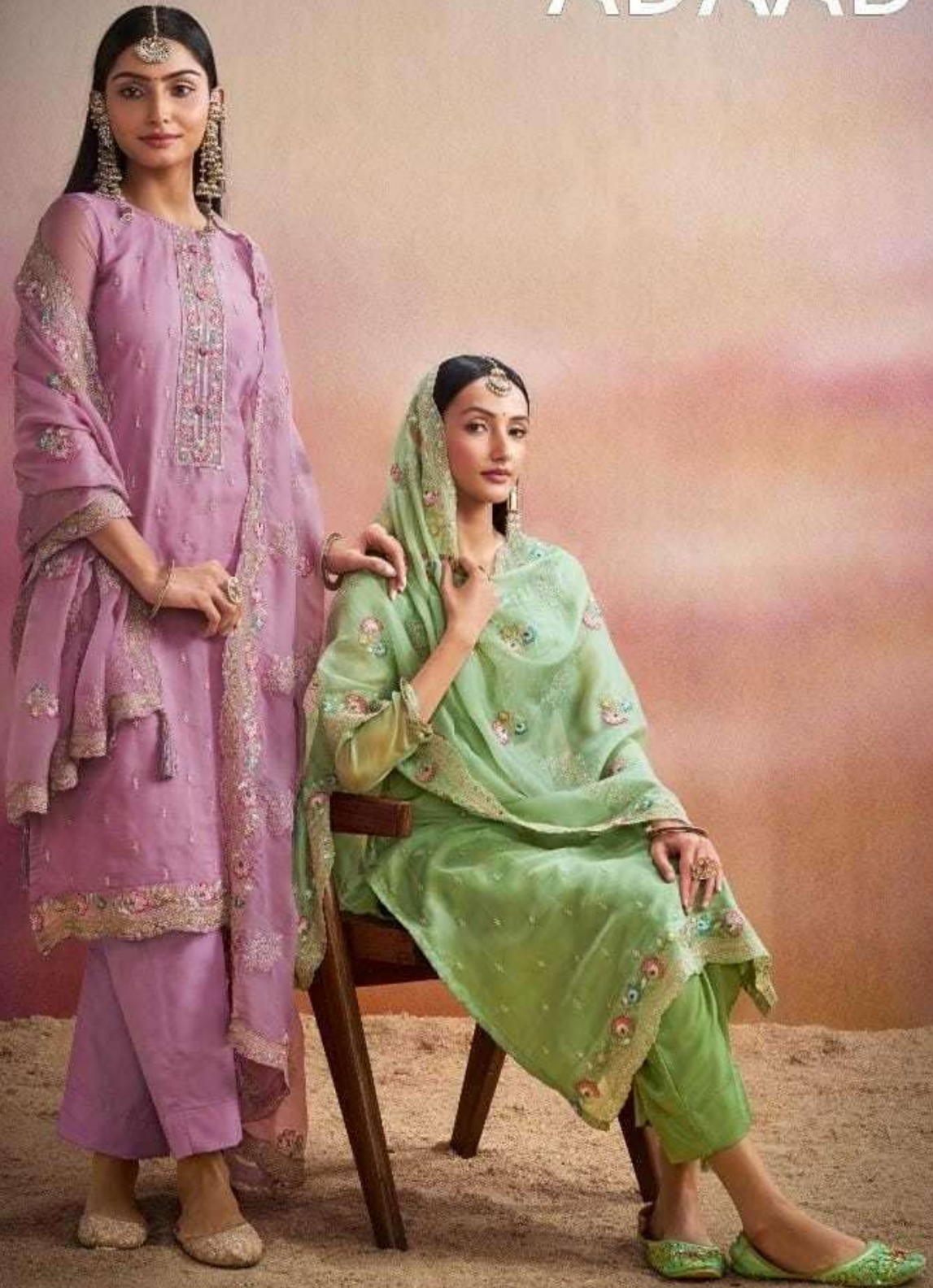
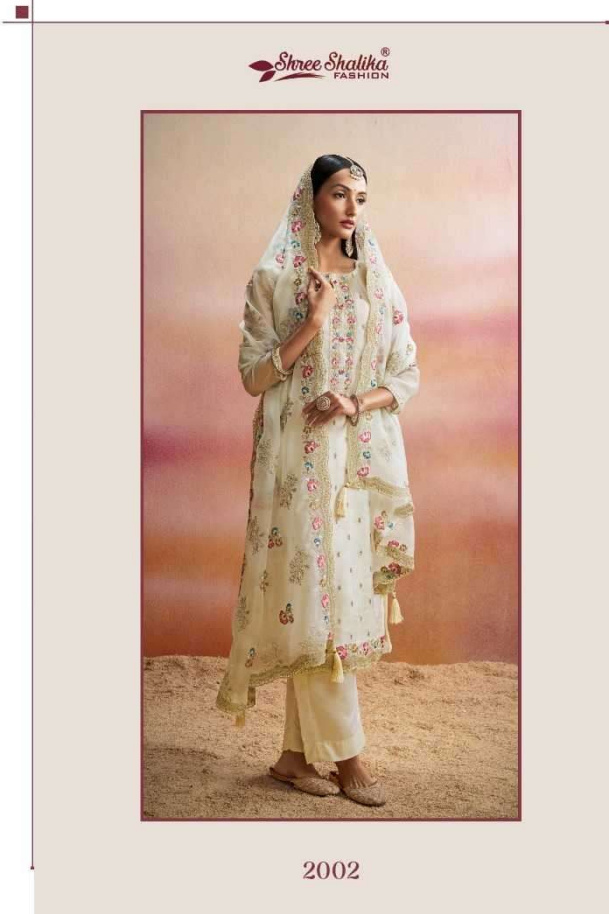


Shree Shalika[®]
FASHION

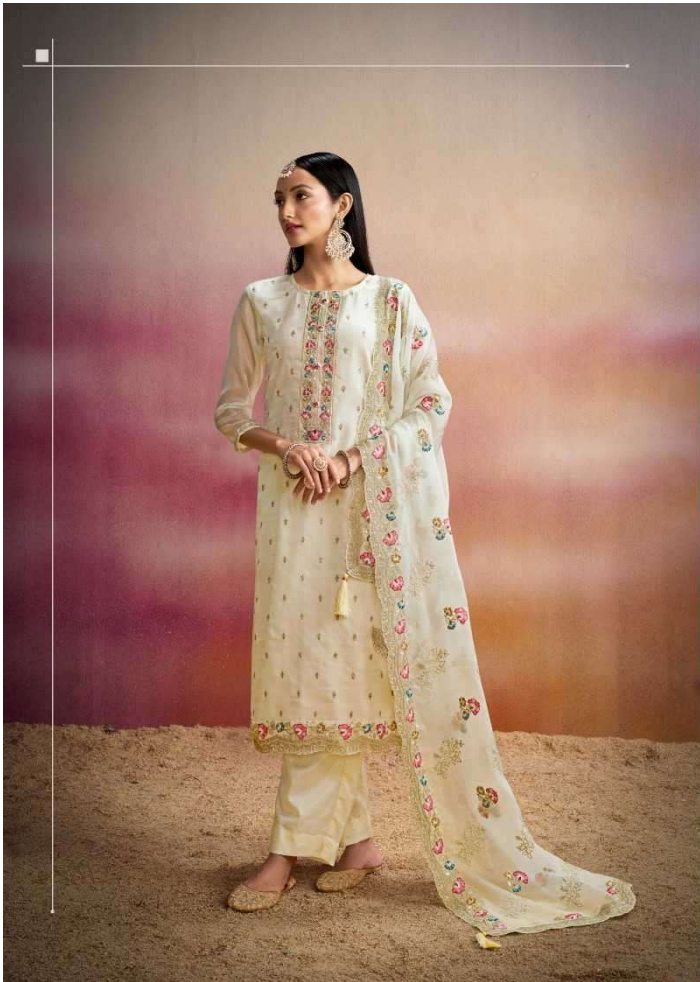
ADAAB





Shree Shalika®
FASHION

2002



Shree Shalika®
FASHION

2002



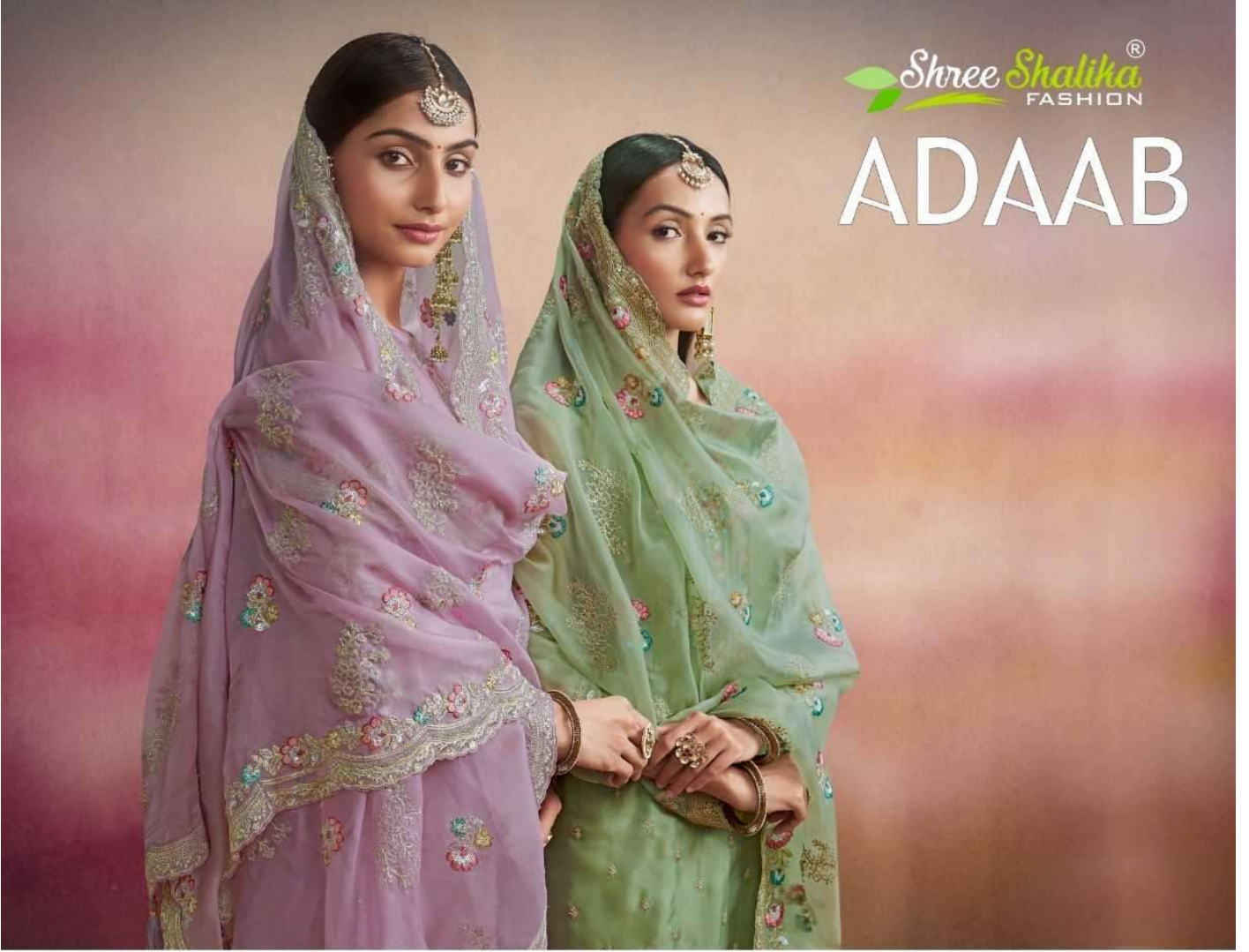
Shree Shalika
FASHION



2001

Shree Shalika[®]
FASHION

ADAAB



FABRIC DETAILS

TOP : SOFT ORGANZA WITH EMBROIDERY WORK

BOTTOM & INNER : DULL SANTOON

DUPATTA : SOFT ORGANZA WITH HEAVY EMBROIDERY WORK

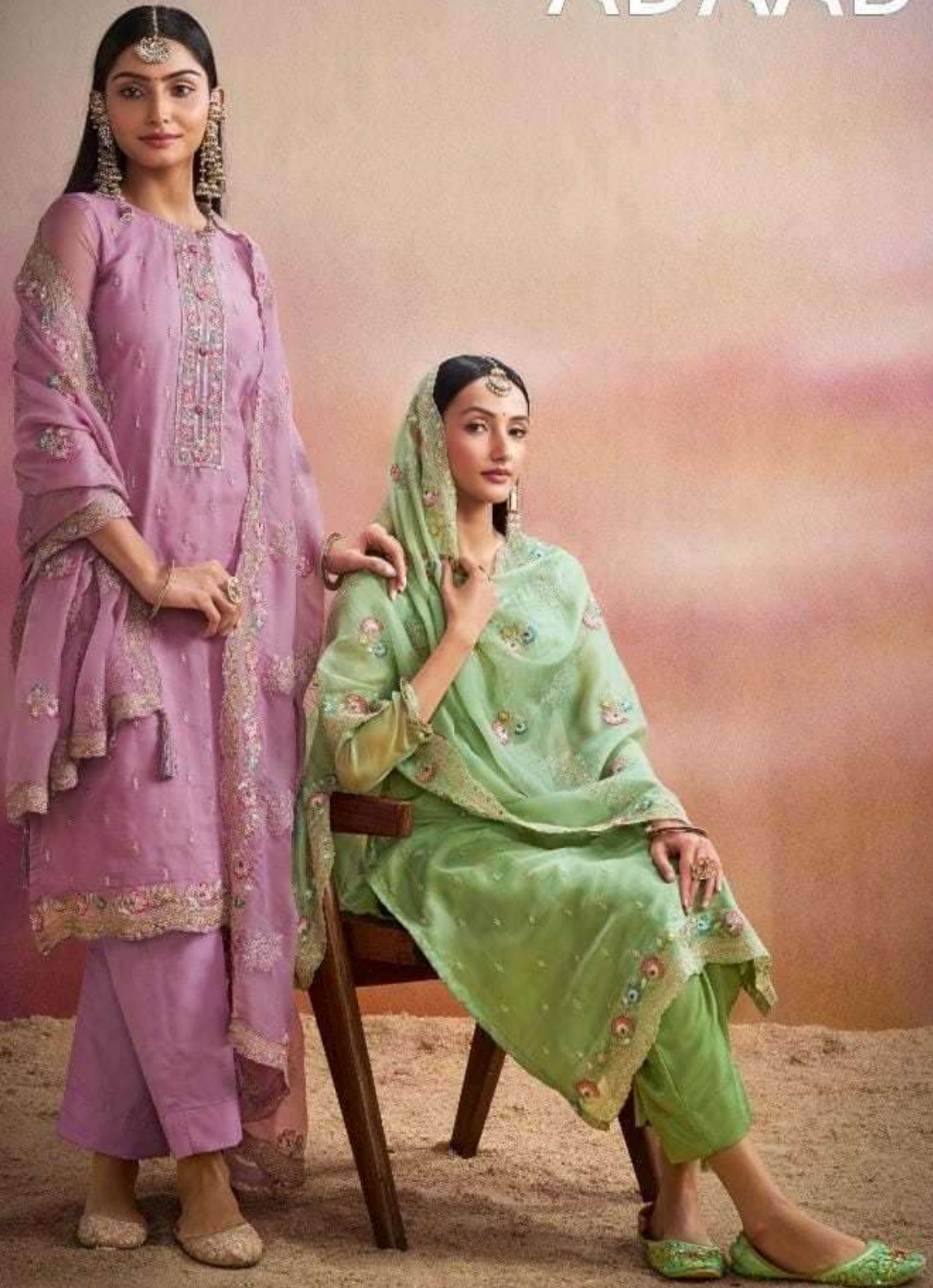
DESIGN NUMBER - 2001 to 2006

RATE - **2245/- EACH**



Shree Shalika[®]
FASHION

ADAAB



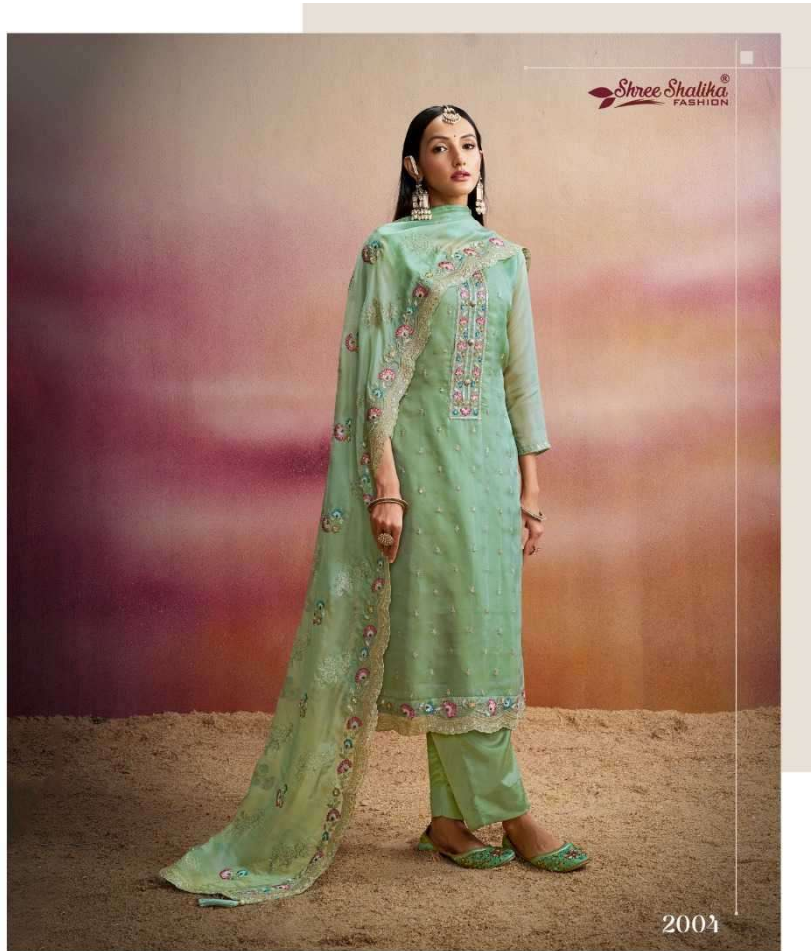
2003





2005





2001



2002



2003



Shree Shalika
FASHION

ADAAB



2004



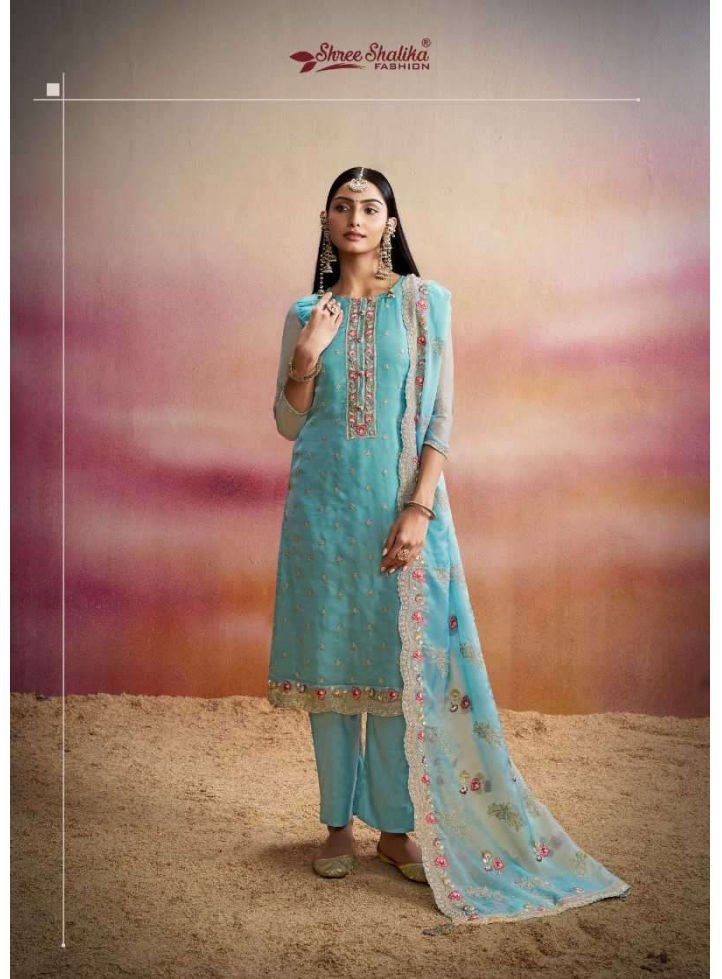
2005

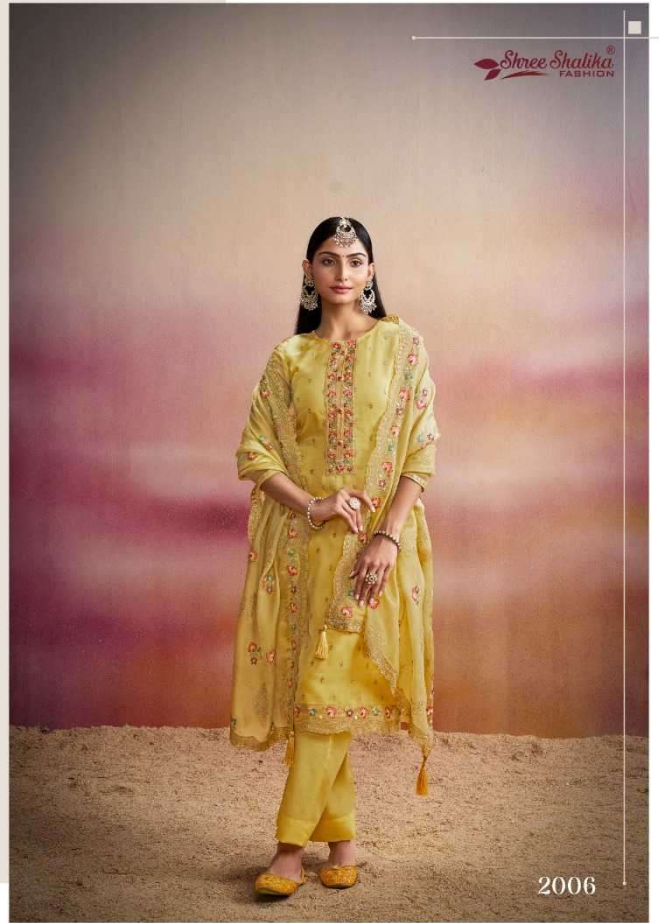


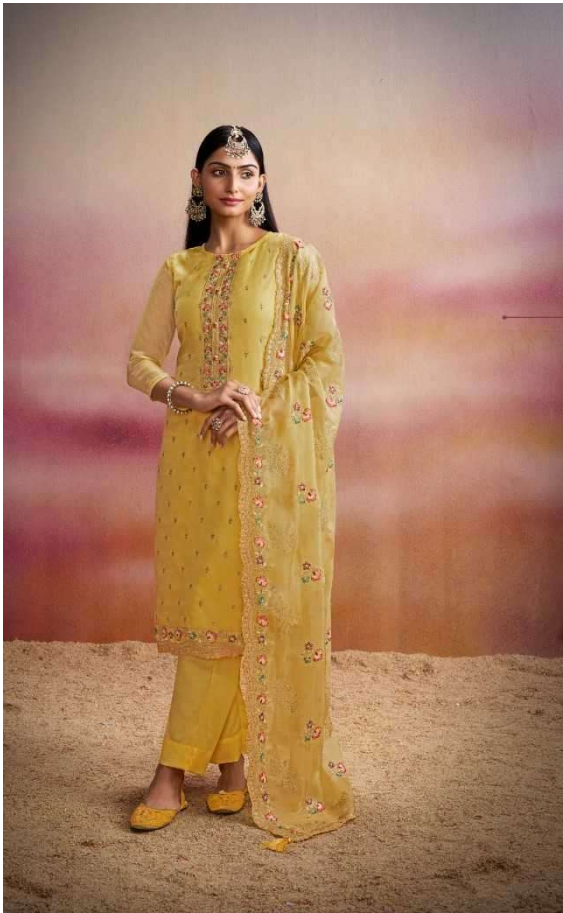
2006



2003







2006



Shree Shalika
FASHION

