



D.NO.238 E

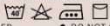
**TOP-- HEAVY ORGENZA WITH
HEAVY EMBROIDERY**

**DUPATTA- HEAVY ORGENZA WITH
EMBROIDERY**

**BOTTOM
INNER- HEAVY SANTOON**



CARE INTRUCTIONS



- DRY CLEAN RECOMMENDED
- DO NOT OVEREXPOSE DAMP FABRIC TO STRONG SUNLIGHT
- DO NOT USE ANYTYPE OF BLEACH OR STAIN REMOVING CHEMICALS
- IRON AT MODERATE TEMPERATURE





D.NO.238 E

TOP-- HEAVY ORGENZA WITH HEAVY EMBROIDERY

DUPATTA- HEAVY ORGENZA WITH EMBROIDERY

**BOTTOM
INNER- HEAVY SANTOON**



CARE INTRUCTIONS

- DRY CLEAN RECOMMENDED
- DO NOT OVEREXPOSE DAMP FABRIC TO STRONG SUNLIGHT
- DO NOT USE ANYTYPE OF BLEACH OR STAIN REMOVING CHEMICALS
- IRON AT MODERATE TEMPERATURE





D.NO.238 B

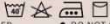
**TOP-- HEAVY ORGENZA WITH
HEAVY EMBROIDERY**

**DUPATTA- HEAVY ORGENZA WITH
EMBROIDERY**

**BOTTOM
INNER- HEAVY SANTOON**



CARE INTRUCTIONS



- DRY CLEAN RECOMMENDED
- DO NOT OVEREXPOSE DAMP FABRIC TO STRONG SUNLIGHT
- DO NOT USE ANYTYPE OF BLEACH OR STAIN REMOVING CHEMICALS
- IRON AT MODERATE TEMPERATURE





D.NO.238 D

TOP-- HEAVY ORGENZA WITH HEAVY EMBROIDERY

DUPATTA- HEAVY ORGENZA WITH EMBROIDERY

**BOTTOM
INNER- HEAVY SANTOON**



CARE INTRUCTIONS

- DRY CLEAN RECOMMENDED
- DO NOT OVEREXPOSE DAMP FABRIC TO STRONG SUNLIGHT
- DO NOT USE ANYTYPE OF BLEACH OR STAIN REMOVING CHEMICALS
- IRON AT MODERATE TEMPERATURE

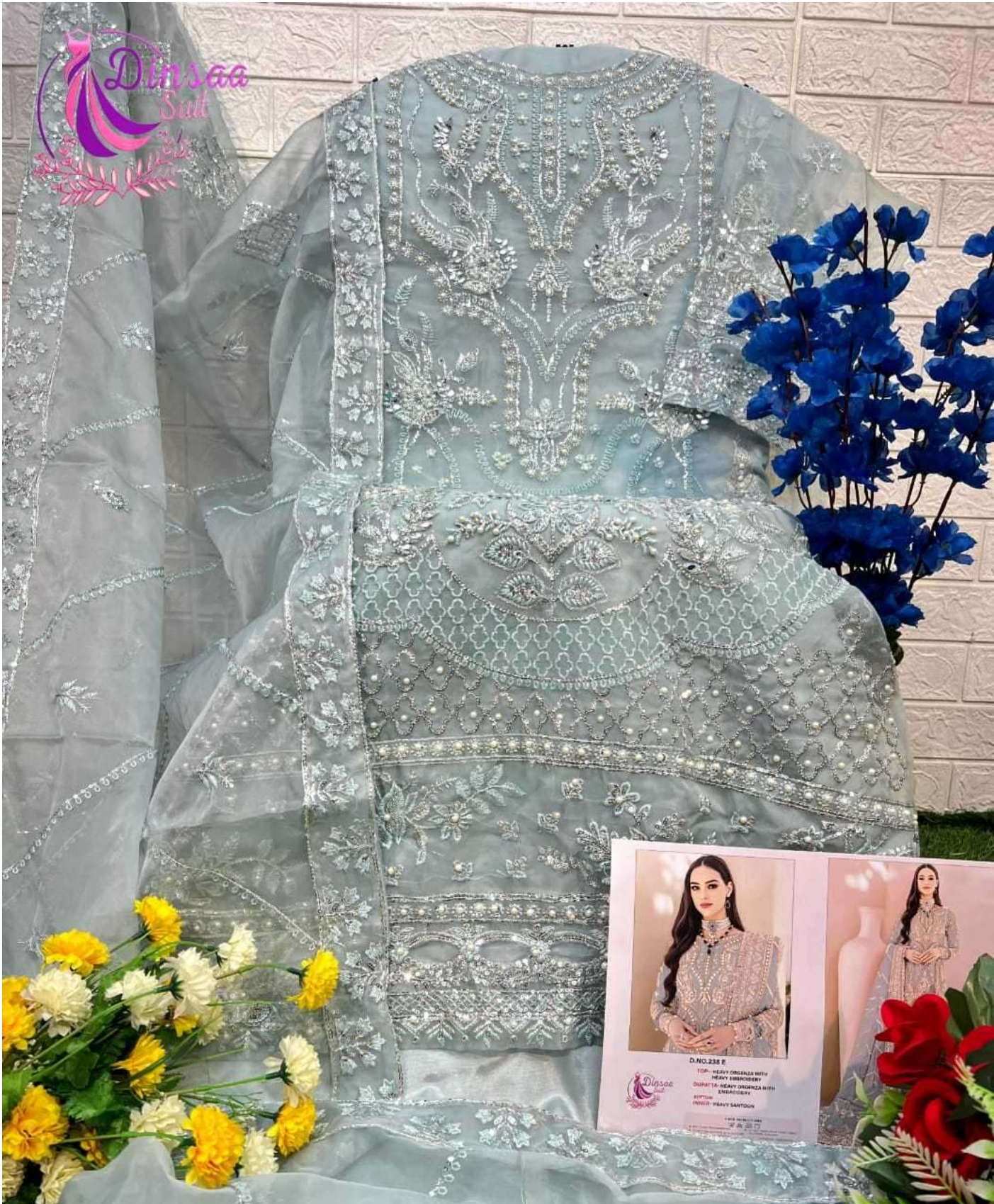




D.NO.238 B

EQN- HEAVY ORGENZA WITH HEAVY EMBROIDERY
DUPETTA- HEAVY ORGENZA WITH EMBROIDERY
SOFTEN- HEAVY SANTICTION

CARE INSTRUCTIONS
WASH IN COLD WATER
DO NOT BLEACH
DO NOT IRON
DO NOT DRY CLEAN



D.NO.238 E

TOP- HEAVY ORGANDA WITH HEAVY EMBROIDERY
DUPATTA- HEAVY ORGANDA WITH EMBROIDERY
BOTTOM- PINKY SAMOON

© 2018 ALL RIGHTS RESERVED
DINSAA SUITS



Dinsoo
Suit



D.NO.238 D

TOP - HEAVY ORGANELA WITH
HEAVY EMBROIDERY
SHIRT - HEAVY ORGANELA WITH
EMBROIDERY
SKIRT - HEAVY SANGRI



CALL US AT 0300-1234567
WWW.DINSOOSUIT.COM



D.No 238-A



D.No 238-B



D.No 238-C



D.No 238-D



D.No 238-E



D.NO.238 C

TOP-- HEAVY ORGENZA WITH HEAVY EMBROIDERY

DUPATTA- HEAVY ORGENZA WITH EMBROIDERY

**BOTTOM
INNER- HEAVY SANTOON**



CARE INTRUCTIONS

- DRY CLEAN RECOMMENDED
- DO NOT OVEREXPOSE DAMP FABRIC TO STRONG SUNLIGHT
- DO NOT USE ANYTYPE OF BLEACH OR STAIN REMOVING CHEMICALS
- IRON AT MODERATE TEMPERATURE





D.NO.238 A

TOP-- HEAVY ORGENZA WITH HEAVY EMBROIDERY

DUPATTA- HEAVY ORGENZA WITH EMBROIDERY

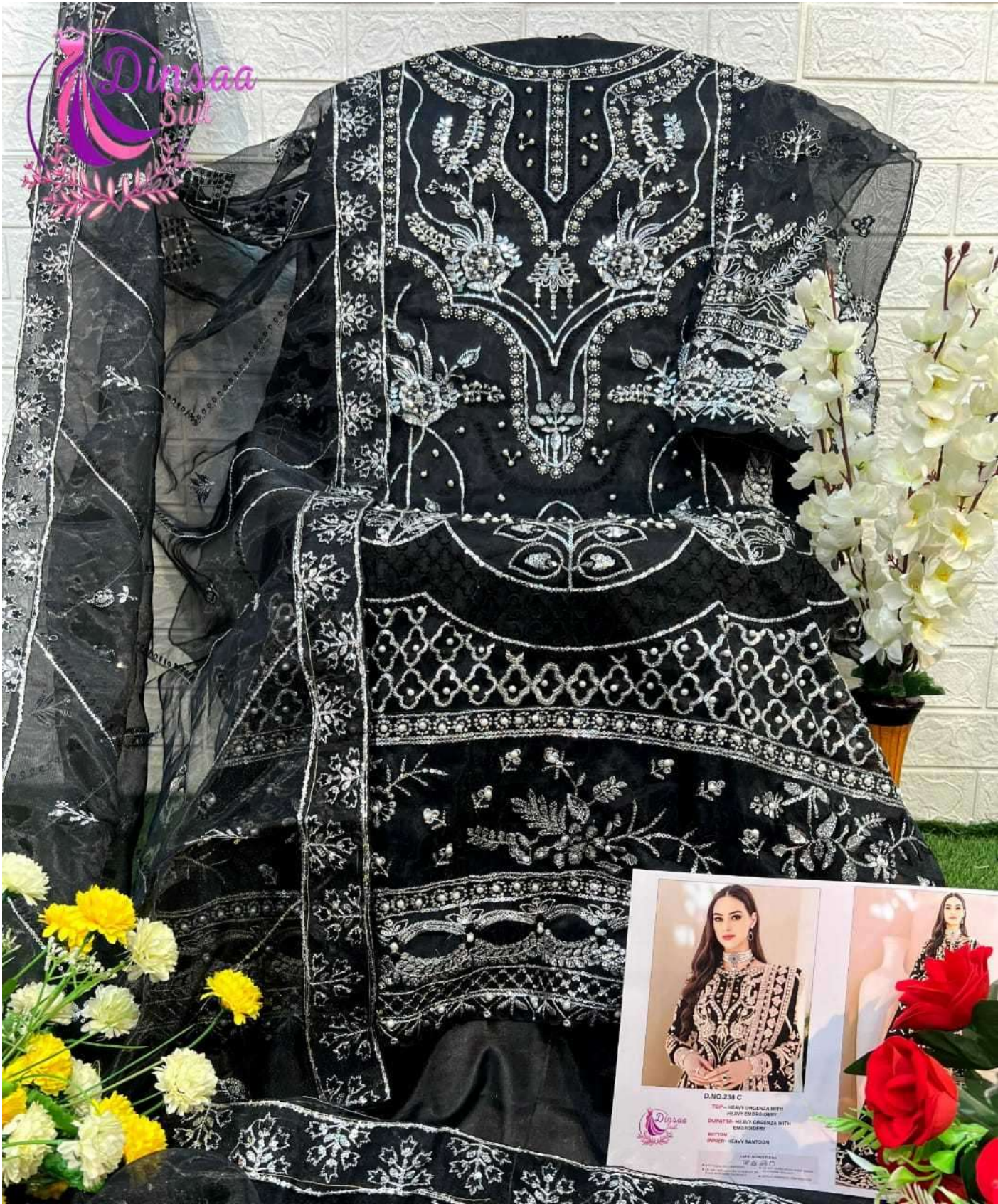
**BOTTOM
INNER- HEAVY SANTOON**



CARE INTRUCTIONS

- DRY CLEAN RECOMMENDED
- DO NOT OVEREXPOSE DAMP FABRIC TO STRONG SUNLIGHT
- DO NOT USE ANYTYPE OF BLEACH OR STAIN REMOVING CHEMICALS
- IRON AT MODERATE TEMPERATURE





Dinsaa
Suits



D.NO.238 C

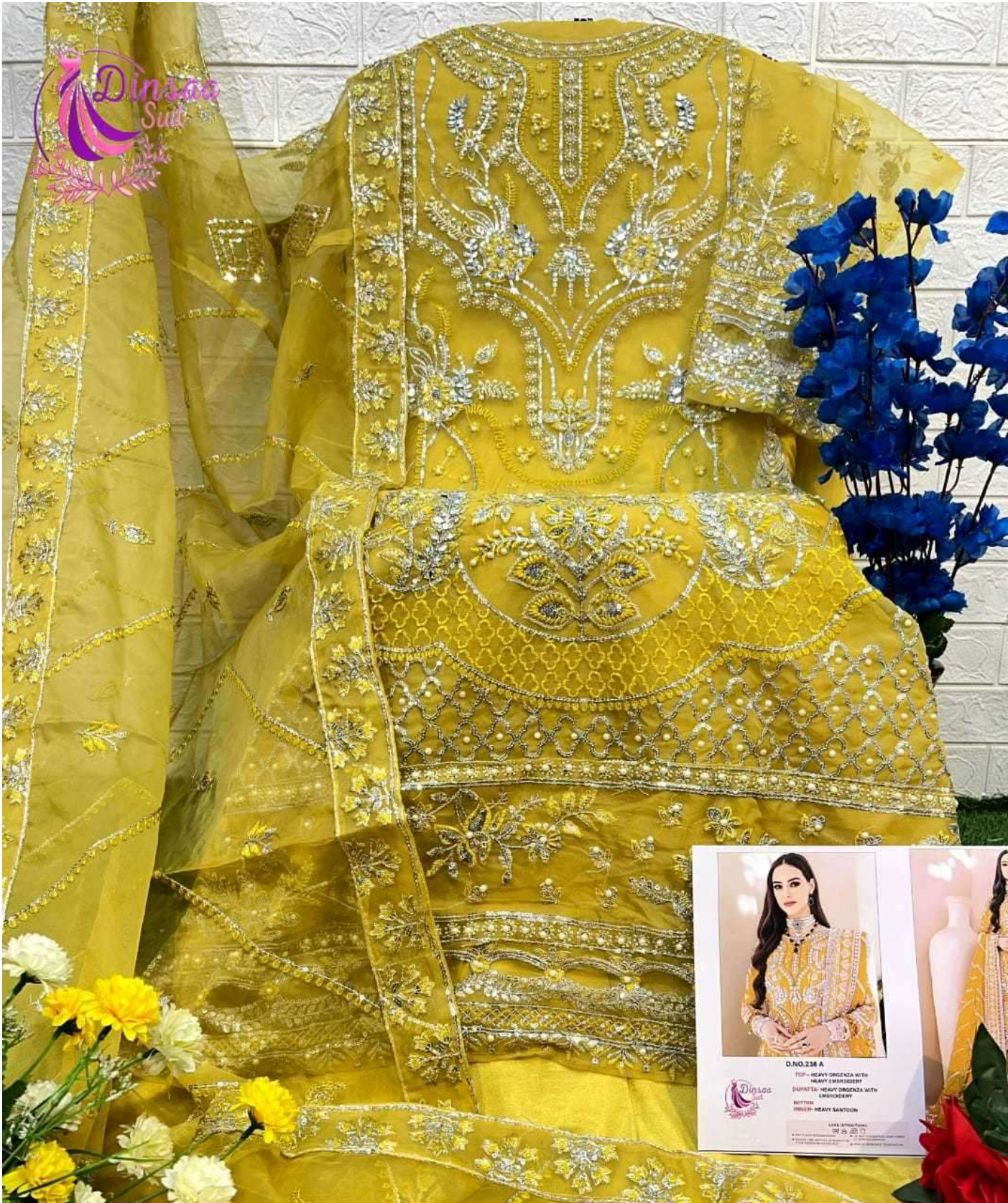
TOP - HEAVY ORGANDA WITH
HEAVY EMBROIDERY

DUPATTA - HEAVY ORGANDA WITH
EMBROIDERY

BOTTOM - HEAVY MANTON

100% SILK
10' 25' 25'





Dinsaa
Sud



D.NO.238 A
TOP- HEAVY ORGENZA WITH
HEAVY EMBROIDERY
DUPATTA- HEAVY ORGENZA WITH
EMBROIDERY
BOTTOM- HEAVY SANTON

CALL US TODAY
0300-1234567
www.dinsaa.com