



Abhkala®

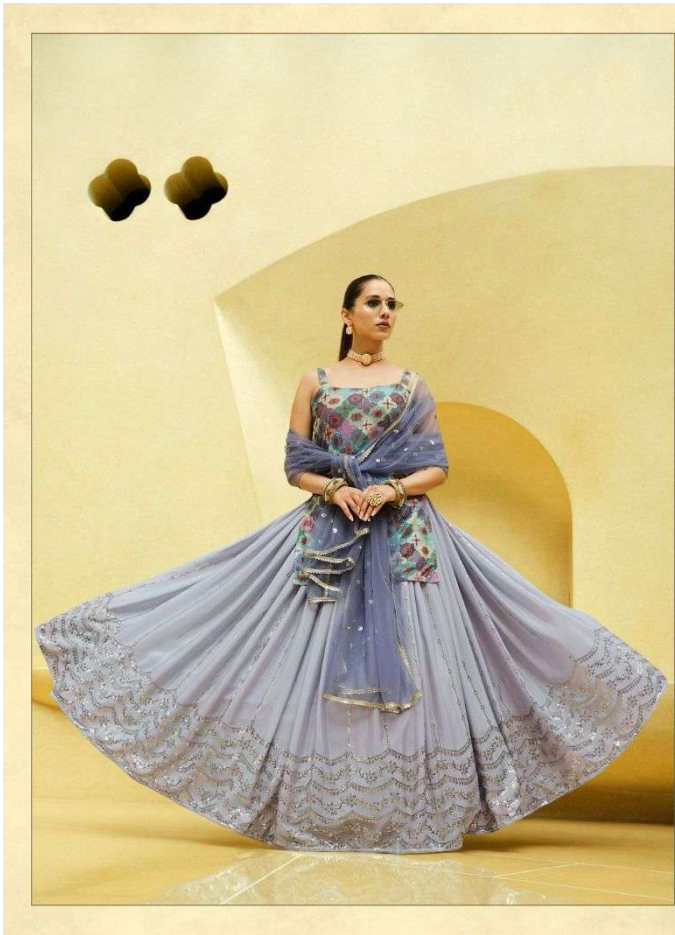
GIRLY

Vol. 23



शुभकला

THIS BOOK / CATALOGUE / LOGO / ARE PROTECTED UNDER COPYRIGHT ACT.  
AN ILLEGAL/UNAUTHORIZED REPRINT/PUBLISHERS REPRODUCTION/DISTRIBUTION AND MODIFICATION OF ANY IMAGES, PHOTOGRAPHS AND  
PRODUCT, TOTALLY OR IN PART, FOR ANY PURPOSE, REASON OR CAUSE IS STRICTLY PROHIBITED AND PUNISHABLE UNDER LAW.



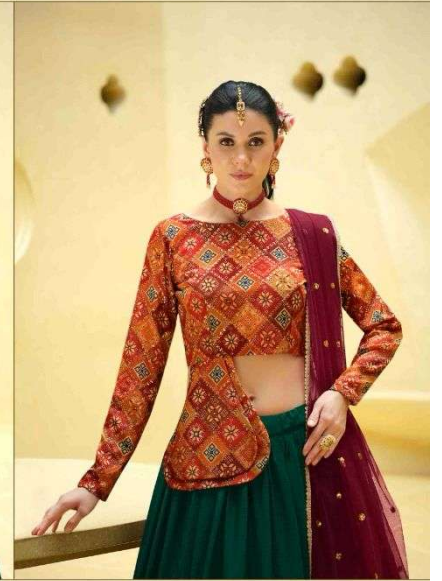
शुभकला bhkala

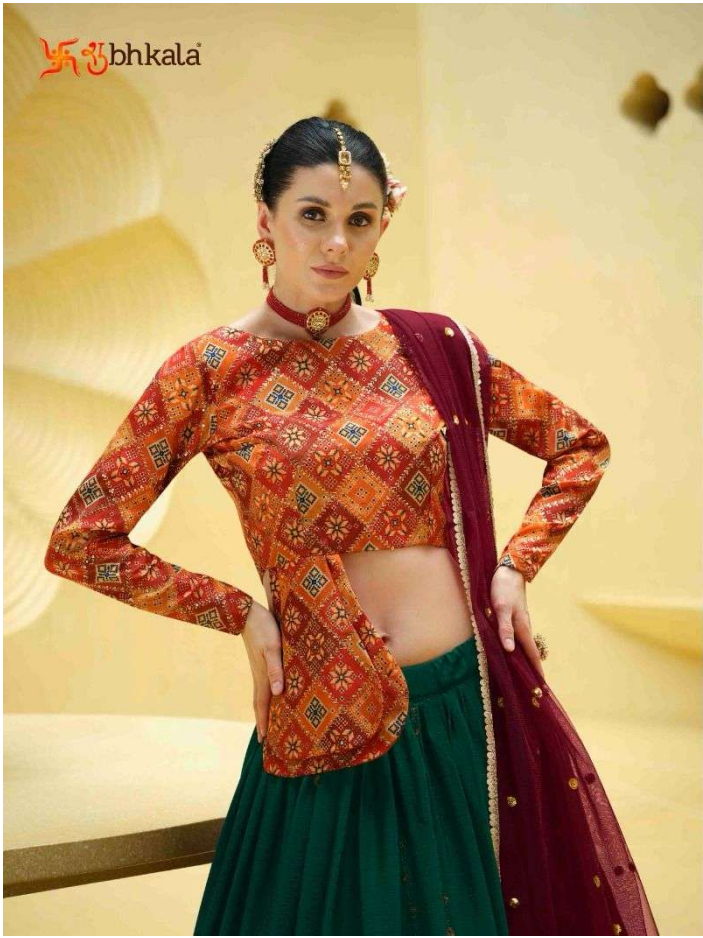


2236



शुभकला







bhkala



शुभकला

GIRLY  
Vol. 23



Design NO. (SKU)	Main Color	Lehenga Fabric	Choli Fabric	Dupatta Fabric	Size (XL 42-Stitched)	Lehenga Work	Choli Work	Dupatta Work	Choli Chest - Length - INCH	Lehenga Length - Waist - INCH	Dupatta Length
2231	Flourecent Green	Georgette	Art Silk	NET	42 BUST AND WAIST	Metalic Machine Foil Work	Print With Sequence Embroidered Work(Position Print Work)	Sequince Embroidered Work	Chest: 42 Length: 14.5 Stitched-XL	Waist: 42 Length: 42 Stitched-XL	2.30 MTR
2232	Turquoise Blue	Chinon Silk	Art Silk	NET	42 BUST AND WAIST	Sequince Embroidered Work	Print With Sequence Embroidered Work(Position Print Work)	Sequince Embroidered Work	Chest: 42 Length: 30 Stitched-XL	Waist: 42 Length: 42 Stitched-XL	2.30 MTR
2233	Grey	Chinon Silk	Art Silk	NET	42 BUST AND WAIST	Sequince Embroidered Work	Print With Sequence Embroidered Work(Position Print Work)	Sequince Embroidered Work	Chest: 42 Length: 21 Stitched-XL	Waist: 42 Length: 42 Stitched-XL	2.30 MTR
2234	Sky	Chinon Silk	Art Silk	NET	42 BUST AND WAIST	Sequince Embroidered Work	Print With Sequence Embroidered Work(Position Print Work)	Sequince Embroidered Work	Chest: 42 Length: 18 Stitched-XL	Waist: 42 Length: 42 Stitched-XL	2.30 MTR
2235	Yellow	Chinon Silk	Art Silk	NET	42 BUST AND WAIST	Sequince Embroidered Work	Print With Sequence Embroidered Work(Position Print Work)	Sequince Embroidered Work	Chest: 42 Length: 16 Stitched-XL	Waist: 42 Length: 42 Stitched-XL	2.30 MTR
2236	Lovender	Chinon Silk	Art Silk	NET	42 BUST AND WAIST	Sequince Embroidered Work	Print With Sequence Embroidered Work(Position Print Work)	Sequince Embroidered Work	Chest: 42 Length: 30 Stitched-XL	Waist: 42 Length: 42 Stitched-XL	2.30 MTR
2237	Rama Green	Chinon Silk	Art Silk	NET	42 BUST AND WAIST	Sequince Embroidered Work	Print With Sequence Embroidered Work(Position Print Work)	Sequince Embroidered Work	Chest: 42 Length: 15 Stitched-XL	Waist: 42 Length: 42 Stitched-XL	2.30 MTR

Weigth: 1.5 KG

THIS BOOK / CATALOGUE / LOGO / ARE PROTECTED UNDER COPYRIGHT ACT.  
AN INLEGAL/UNAUTHORIZED REPRINT, PUBLISHING, REPRODUCTION, DISTRIBUTION AND MODIFICATION OF ANY IMAGES, PHOTOGRAPHS AND PRODUCTCS, TOTALLY OR IN PART, FOR ANY PURPOSE, REASON OR CAUSE IS STRICTLY PROHIBITED AND PUNISHABLE UNDER LAW.

bhkala



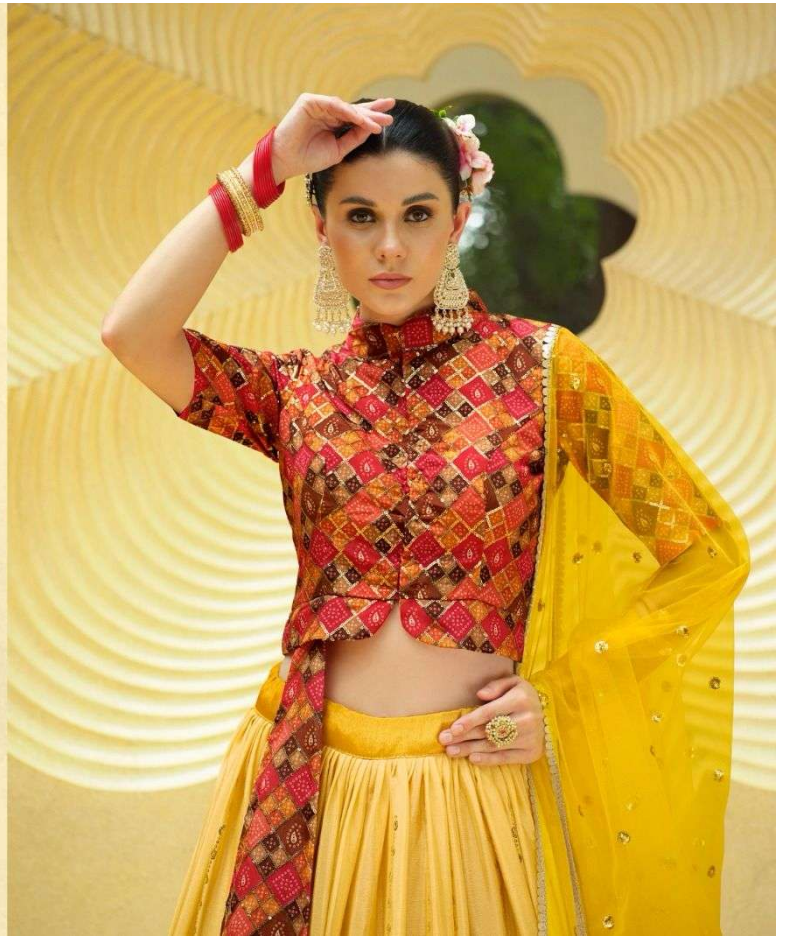
शुभकला bhkala



2234



Swabhkala



Ubhkala



2235

QUEEN OF SWEETNESS

"BEAUTY ISN'T ABOUT HAVING PRETTY FACE

IT'S ABOUT HAVING A BEAUTIFUL SOUL"



Swastika bhkala



2232





Swastika bhkala

2233



शुभकला bhkala



**E**STYLISH  
**E**ELEGANCE

THE FUTURE OF FASHION IS HAVE ONE... DRESS UP!!  
YOU NEED TO GO FROM GOOD TO GORGEOUS.



Swastika bhkala



2231





Abhkala®

GIRLY

Vol. 23

