



Top : Heavy Cotton Printed Kurti  
Bottom : Heavy Cotton Divider Plazzo  
Dupatta : Mull Cotton Dupatta  
Work : Pure Khatli Work



Size : XL(42) 3XL(46)



Satrange 1003



Top : Pure Cotton Weaving  
Bottom : Pure Cotton Weaving  
Dupatta : Pure Viscose Organza  
Work : Orgenza Work + Handwork + Accessory Work  
Size : 3XL(46)

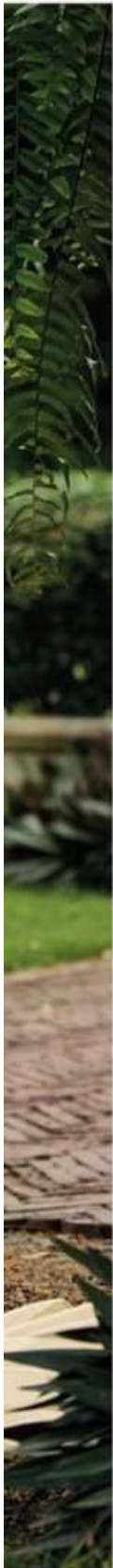


40041





Top : Pure Cotton  
Bottom : Pure Cotton  
Dupatta : Pure Viscose Organza  
Work : Fancy Applique + Handwork + Accessory Work  
Size : 3XL(46)



40014



Top : Heavy Cotton Printed Kurti  
Bottom : Heavy Cotton Divider Plazzo  
Dupatta : Mull Cotton Dupatta  
Work : Pure Khatli Work



Size : XL(42) 3XL(46)



Satrange 1003



Top : Elegance Modal Chainstich Kurti  
Bottom : Elegance Modal Straight Pant  
Dupatta : Classy Dupatta  
Work : Chainstitch And Handwork



Size : XXL(44) 3XL(46)

1060



1060



Top : Chinon Alia Cut Kurti  
Bottom : Chinon Pant  
Dupatta : Chinon Dupatta  
Work : Embroidery And Handwork

Size : XL(42)



5002



5002



Top : Pure Cotton Self Weaving Kurti  
Bottom : Pure Cotton Plazzo  
Dupatta : Pure Cotton Weaving Dying Fancy  
Dupatta  
Work : Embroidery And Thread Work



Size : 3XL(46)



40404



Top : Heavy Cotton Printed Kurti  
 Bottom : Heavy Cotton Divider Plazzo  
 Dupatta : Mull Cotton Dupatta  
 Work : Pure Khatli Work



Size : M(38)

1004



"Fashion is part of the daily life and it changes all the time, with all the events. You can even see the approaching of a revolution in clothes. You can see and feel everything in clothes."

Satrange - 1004





**Top : Pure Viscose Kurti**  
**Bottom : Pure Viscose Pant**  
**Dupatta : Chiffon Shaded Dupatta**  
**Work : Embroidery And Applique Work**



**Size : XL(42)**





Top : Elegance Modal Chainstich Kurti  
Bottom : Elegance Modal Straight Pant  
Dupatta : Classy Dupatta  
Work : Chainstich And Handwork

Size : 3XL(46)



1061



1061



Top : Chinon Alia Cut Kurti  
Bottom : Chinon Pant  
Dupatta : Chinon Dupatta  
Work : Embroidery And Handwork

Size : M(38) L(40) XL(42) XXL(44) 3XL(46)



5003

5003



**Top : Bamberg Silk Kurti**  
**Bottom : Jacquard Weav On Silk Pant**  
**Dupatta : Jaquard Dupatta**  
**Work : Embroidery & HandWork**



**Size : XL(42)**



12102

**LL-Meenakari3-12102**

**U22**



Top : Chinon Alia Cut Kurti  
Bottom : Chinon Pant  
Dupatta : Chinon Dupatta  
Work : Embroidery And Handwork  
Size : M(38) L(40) XL(42) XXL(44)



5004



5004

WG-Reeva-5004

U22