



शुभकला bhkala

FLORY
VOL - 42



FLORY

VOL-42

Design NO. (SKU)	Gown & Inner & Dupatta Color	Gown Fabric	Dupatta Fabric	Inner Fabric	SIZE (XL-42 • STITCHED)	Gown & Dupatta Work	Top Length INCH	Dupatta Length MTR	Weight
4981	Yellow	CHINON	CHINON	SILK CREPE	READY TO WEAR (SIZE: 42-XL)	Thread and Sequence Embroidered Work	58	2.30	2 KG
4982	Dusty Pink	CHINON	CHINON	SILK CREPE	READY TO WEAR (SIZE: 42-XL)	Thread and Sequence Embroidered Work	58	2.30	2 KG
4983	Purple	CHINON	CHINON	SILK CREPE	READY TO WEAR (SIZE: 42-XL)	Thread and Sequence Embroidered Work	58	2.30	2 KG
4984	Grey	CHINON	CHINON	SILK CREPE	READY TO WEAR (SIZE: 42-XL)	Thread and Sequence Embroidered Work	58	2.30	2 KG
4985	Peach	CHINON	CHINON	SILK CREPE	READY TO WEAR (SIZE: 42-XL)	Thread and Sequence Embroidered Work	58	2.30	2 KG

THIS BOOK / CATALOGUE / LOGO / ARE PROTECTED UNDER COPYRIGHT ACT.

AN ILLEGAL/UNAUTHORIZED REPRINT, PUBLISHING, REPRODUCTION, DISTRIBUTION AND MODIFICATION OF ANY IMAGES, PHOTOGRAPHS AND PRODUCTS, TOTALLY OR IN PART, FOR ANY PURPOSE, REASON OR CAUSE IS STRICTLY PROHIBITED AND PUNISHABLE UNDER LAW.



शुभकला bhkala

FLORY
VOL - 42



bhkala

4983



शुभकला bhkala



4981



Abhika

4985





Abhikala

4984



श्रीbhkala



4984





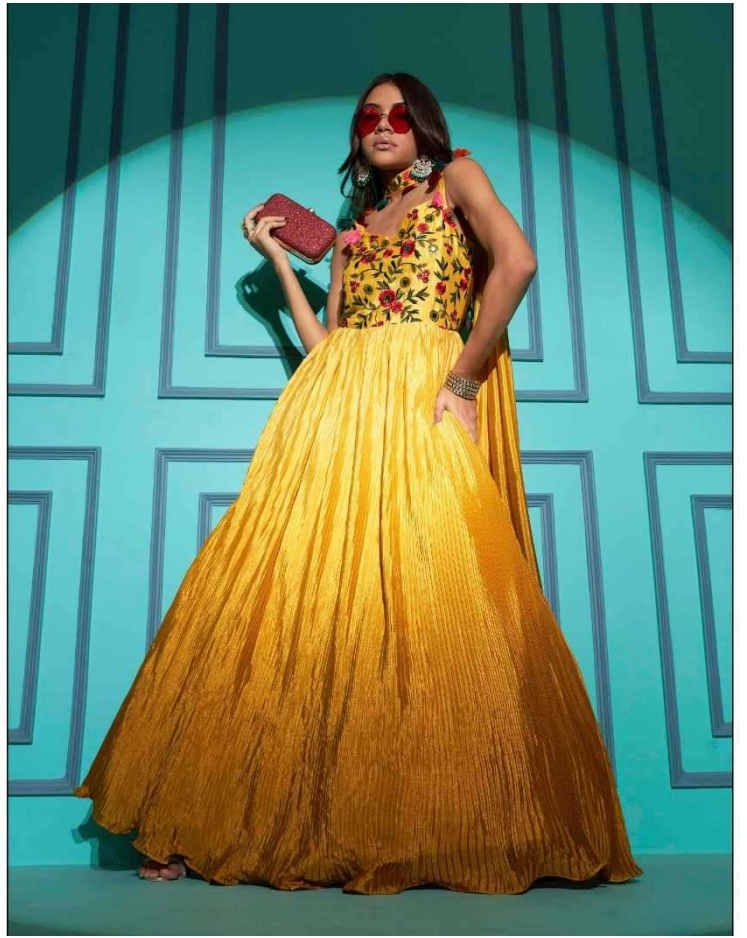
शुभकला



4983



4981



श्रीbhkala



4982





భక్తా



4982



शुभकला

4985





4981



4982



4983



4984



4985

 bhkala

f L O R Y
VOL-42