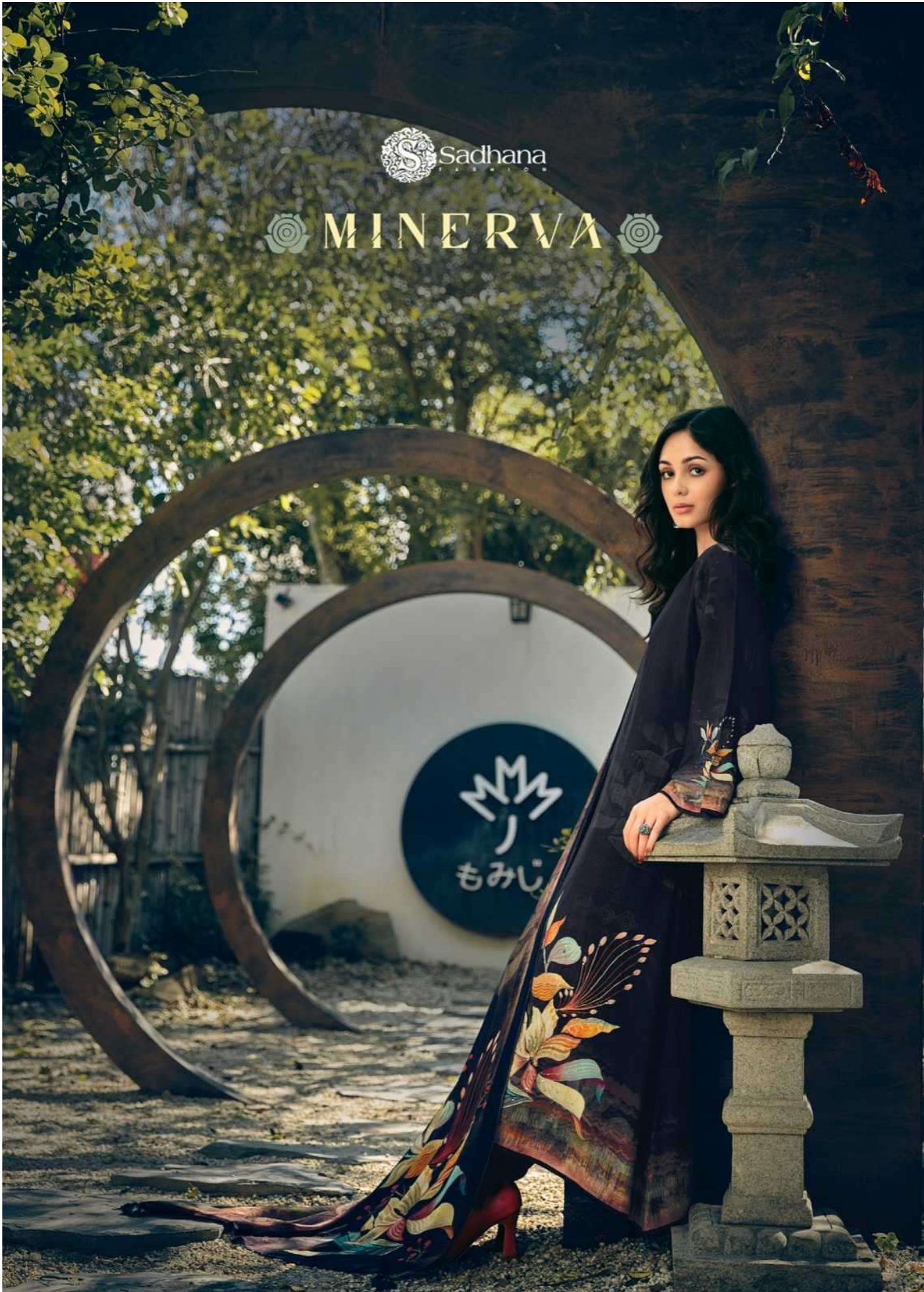


Sadhana

MINERVA



# MATCHLESS

An ecstasy of matchless style.

*Style*





FEEL THE

Nature

*Revolutionizing six yards  
with fluidity, delicate  
designs interpreted  
using the power of Nature!*



## EXPRESS GRATITUDE

*Fashion is an epic tale of turning a simple fabric into fabulous drapes; express your  
gratitude towards thousands of hands working behind it!*



**GRACEFUL: PANACHE**

AN EPITOME OF GRACEFUL PANACHE.



GRACEFUL  
PANACHE



**BE ADVENTUROUS**

*There's definitely a push towards vivacious,  
vivid styles and a greater  
sense of adventure in how we dress.*



 Sadhana  
P R E S E N T S

# HEAD S

CAPTIVATING: SHADES

THE MAGIC OF CAPTIVATING SHADES.







# MATCHLESS

An ecstasy of matchless style.

*Style*

Fashion plays a defining role in enhancing a person's confidence and sense of self. Which is why we seek to create designer wear that leaves unforgettable impressions on the world, and yet, is versatile enough to transcend people, places and occasions. *PRM* presents an exclusive designer collection of the season with this edition.

# CLASSY





ETHNIC:ETHOS

THE ESSENCE OF ETHNIC ETHOS.

ETHNIC.ETHOS



**GRACEFUL: PANACHE**  
AN EPITOME OF GRACEFUL PANACHE.



# BE ADVENTUROUS

*There's definitely a push toward vivacious, vivid styles and a greater sense of adventure in how we dress.*











10025



10026



10029



10030



10027



10028

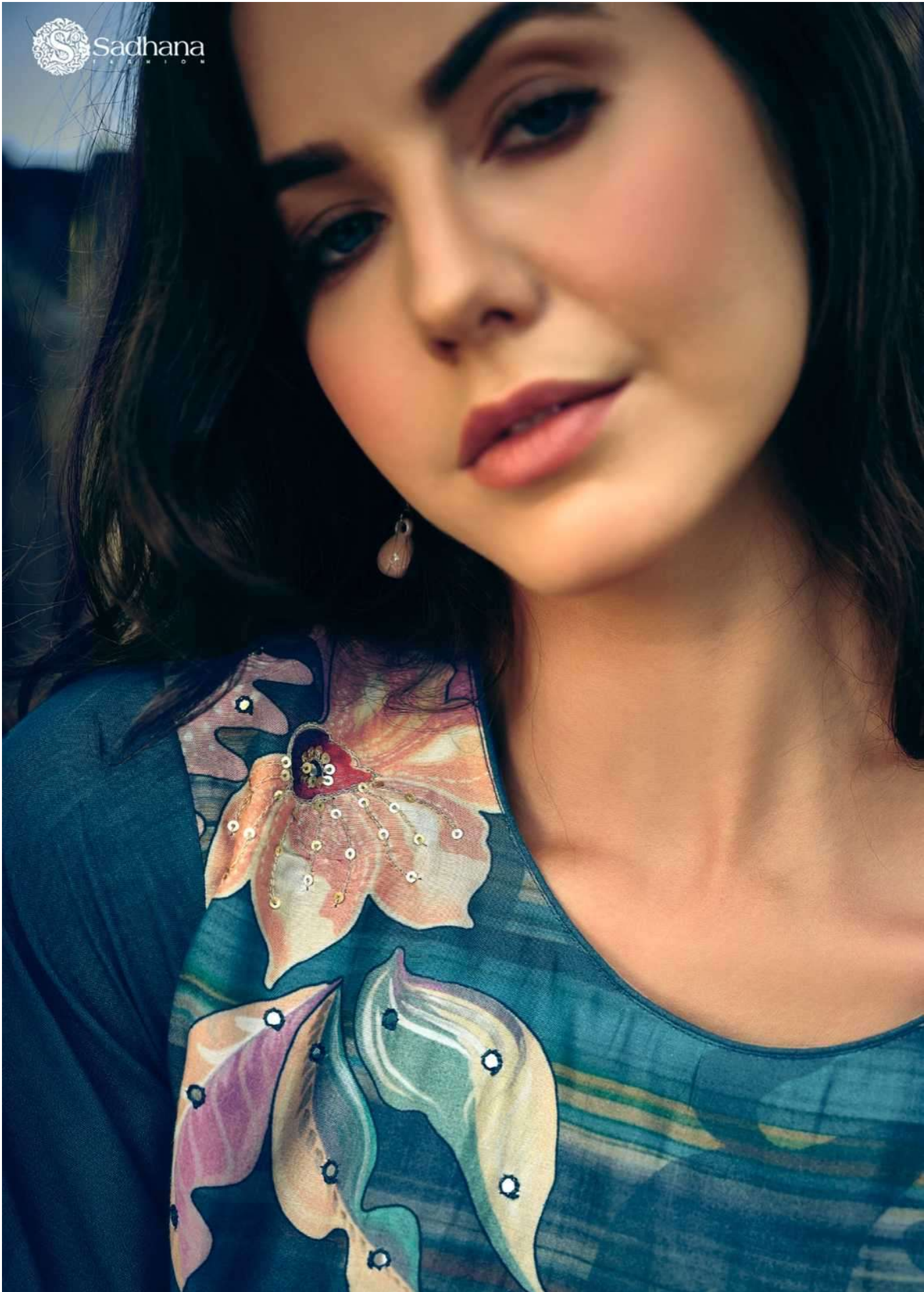


10031



10032







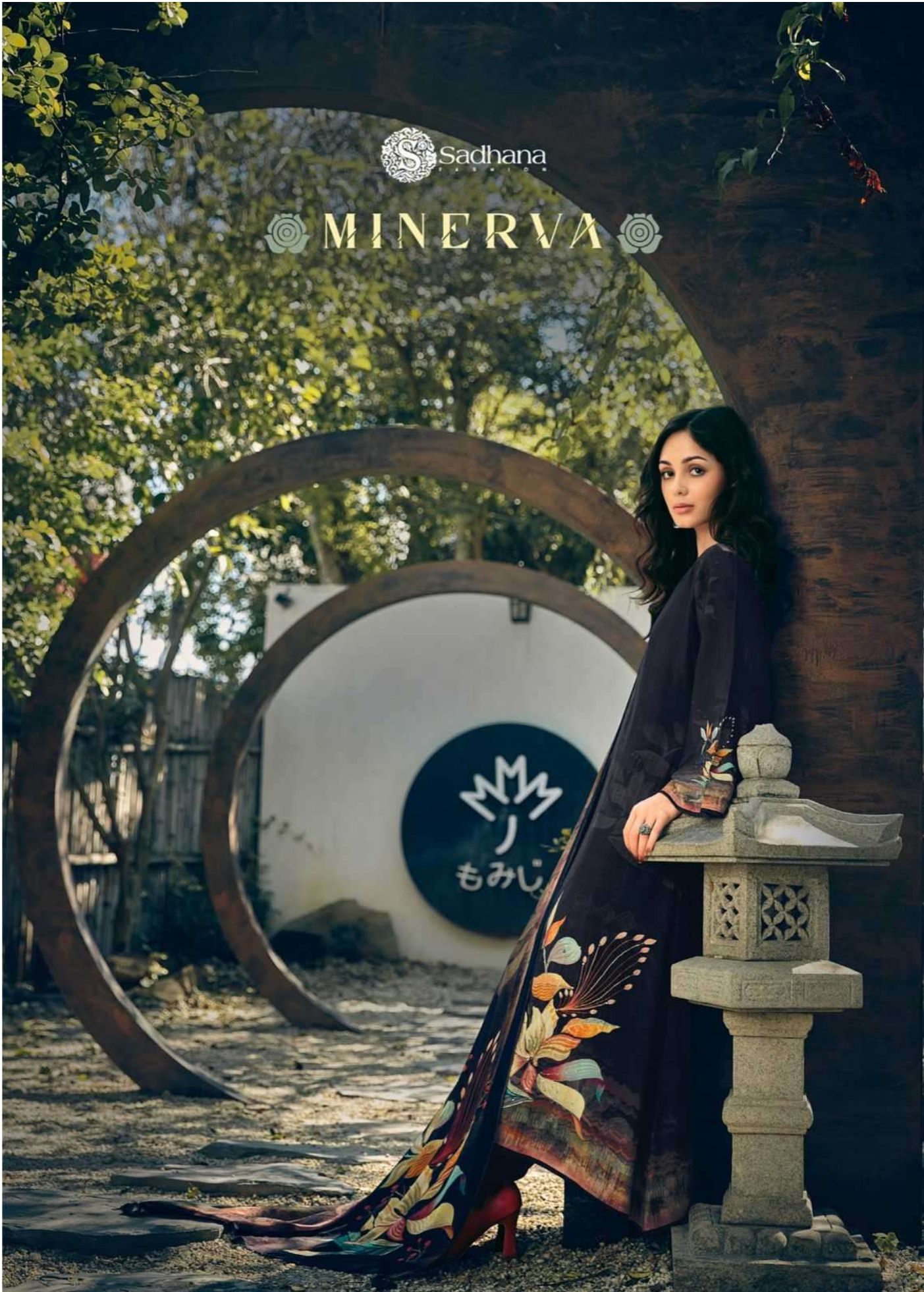




10025

Sadhana

MINERVA









*The philosophy this season puts the spotlight on how we envision festive dressing. Presenting the collection, which perfectly matches both factors: comfort and style that today's women aspire for her dream celebration year.*

10031





