



D.no-175-A



TOP :-

HEAVY DULL ORAGNZA WITH HANDWORK

BOTTOM/INNER :-

HEAVY SANTOON

DUPATTA :-

HEAVY DULL ORAGNZA EMBROIDERY



DS-161 D

Top- FOX GEORGETTE EMBROIDERY

Bottom/Iner- SANTOON

Dupatta- NAZMEEN EMBROIDERY

WASHING INSTRUCTIONS
 DRY CLEAN ONLY OR WASH IN COLD WATER
 DO NOT BLEACH OR USE HARSH DETERGENTS
 DO NOT IRON OR USE STEAM IRONING
 DO NOT TUMBLE DRY
 DO NOT WASH WITH OTHER FABRICS
 DO NOT WASH WITH OTHER COLORS
 DO NOT WASH WITH OTHER MATERIALS
 DO NOT WASH WITH OTHER FABRICS



D.No.231-C

TOP

Organza With
Heavy Embroidery

BOTTOM INNER

Santoon With Digital Print

DUPATTA

Organza Heavy Embroidery



DS-149-E

Top- PURE ORGANZA WITH HAND WORK

Bottom/ Iner- SANTOON WITH WORK

Dupatta- PURE ORGANZA

INDIANCLOTHING
SHEER KHADI SILK SAREES AND
SANTOON SAREES WITH ZARI WORK
SILK SAREES WITH
SANTOON SAREES WITH ZARI WORK
SANTOON SAREES WITH ZARI WORK
SANTOON SAREES WITH ZARI WORK



ELAF NX
SUMMER COLLECTION
VOL-01

DS-1015





217









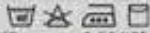
D.NO.220

**TOP--COTTON SELF EMBROIDERED
WITH MOTI WORK**

**BOTTOM /
INNER -PATCH PROVIDED**

DUPATTA-HEAVY EMBROIDERED DUPATTA

CARE INTRUCTIONS



- DRY CLEAN RECOMMENDED
- DO NOT OVEREXPOSE DAMP FABRIC TO STRONG SUNLIGHT
- DO NOT USE ANYTYPE OF BLEACH OR STAIN REMOVING CHEMICALS
- IRON AT MODERATE TEMPERATURE





MARIA.B.

VOL-2 COLORS



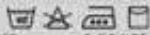
D.NO.202 B

TOP-CAMBRIC COTTON WITH EMBRODRY

BOTTOM-SOLID COTTON

DUPATTA-MUSLIN COTTON

CARE INTRUCTIONS



- DRY CLEAN RECOMMENDED
- DO NOT OVEREXPOSE DAMP FABRIC TO STRONG SUNLIGHT
- DO NOT USE ANYTYPE OF BLEACH OR STAIN REMOVING CHEMICALS
- IRON AT MODERATE TEMPERATURE



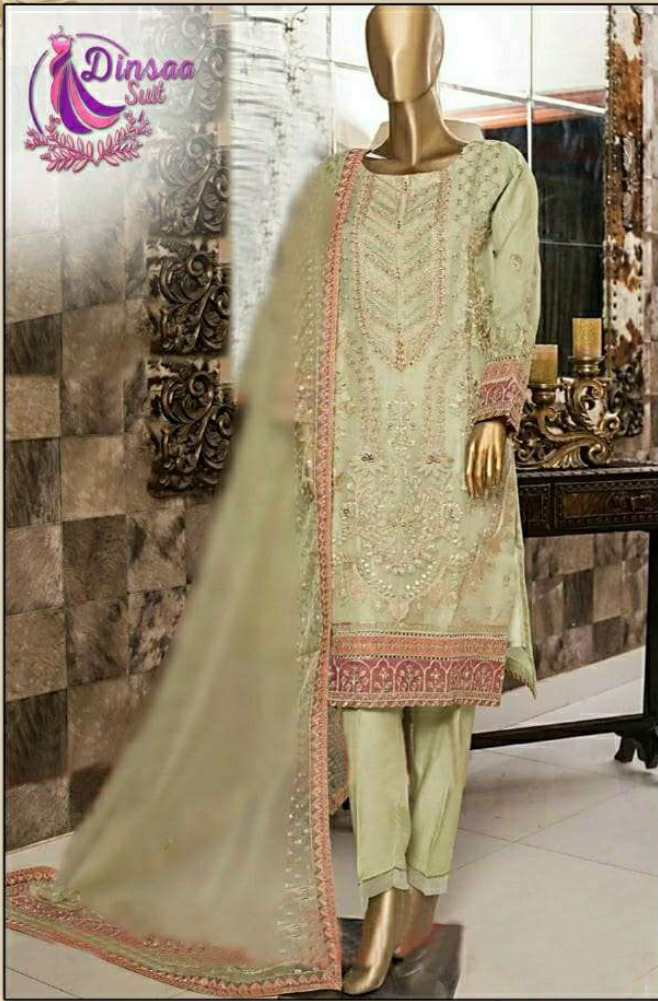


DS-155

**Top- FOX GEORGETTE
EMBROIDERY**
Bottom/Iner- SANTOON
Dupatta- NET EMBROIDERY

WASHING INSTRUCTIONS
DO NOT FEEL THE NEED TO WASH YOUR GARMENTS
BEFORE EACH WEARING. SHOULD BE WASHED IN WATER
BY HAND ONLY. DO NOT USE DRYER OR IRON.
DO NOT USE BLEACH. IF THIS IS THE FIRST TIME YOU WASH
YOUR GARMENT, PLEASE WASH IT IN COLD WATER.
WASHING INSTRUCTIONS SHOULD BE FOLLOWED AT ALL TIMES.
© 2018 DINSAA SUITS. ALL RIGHTS RESERVED.

NOOR



DS-157

**Top- ORGANZA HEAVY EMBROIDERY
WITH KHATLI HAND WORK**

Bottom/Iner- SANTOON

Dupatta- ORGANZA EMBROIDERY

WASHING INSTRUCTIONS
DO NOT FEEL THE NEED TO WASH YOUR GARMENTS
AFTER EVERY USE. THEY SHOULD BE WASHED IN WATER
BY HAND ONLY. DO NOT USE DRY CLEANING.
DO NOT USE BLEACH OR OTHER CHEMICALS.
DO NOT IRON AT HIGH TEMPERATURE. DO NOT USE DRY CLEANING.
DO NOT WASH IN WARM WATER. DO NOT USE DRY CLEANING.



DS-111-B

TOP- Camric Cotton
Bottom- Cotton Solid
Dupatta- Organza with moti



WASHING INSTRUCTIONS
 DO NOT USE HOT TIPS OF IRON OR DRYER HEAT OR CHEMICALS
 WASH IN COLD WATER, BLEACH IS TO BE AVOIDED IN WATER
 ALL COMPONENTS SHOULD BE WASHED SEPARATELY
 DO NOT USE STARCH, IN PARTICULAR IN NECK AND COLOURED PARTS
 WASH COLOURED AND WHITE FABRICS SEPARATELY
 REMOVING STAIN FROM CLOTHING SHOULD BE DONE IMMEDIATELY
 EXTRA CARE AND ATTENTION SHOULD BE GIVEN



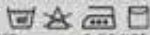
D.NO.226

**TOP--HEAVY REYON SELF EMBROIDERY
WITH FANCY WORK**

**BOTTOM /
INNER -HEAVY REYON**

DUPATTA-TABBY SILK PRINTED

CARE INTRUCTIONS



- DRY CLEAN RECOMMENDED
- DO NOT OVEREXPOSE DAMP FABRIC TO STRONG SUNLIGHT
- DO NOT USE ANYTYPE OF BLEACH OR STAIN REMOVING CHEMICALS
- IRON AT MODERATE TEMPERATURE







LIFE ISN'T PERFECT BUT YOUR OUTFIT CAN BE

186







LIFE IS SHORT. MAKE EVERY OUTFIT COUNT

189



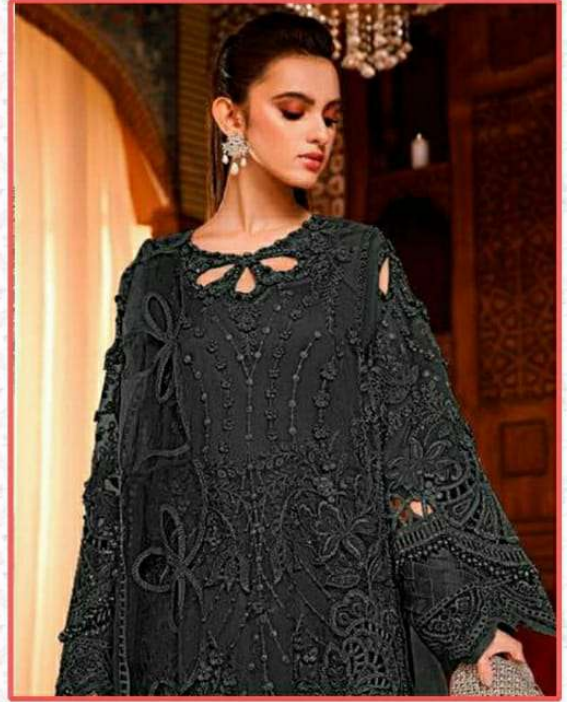


DIFFERENT IS BEAUTIFUL





D.no-177-B



-:TOP:-

**Organza Embroidery with applique
and pearl Work**

-:BOTTAM/INNER:-

Santoon

-:DUPATTA:-

Organza Embroidery.



D.NO.171-A



D.no-172-C



--:TOP:-

Fox Georgette

--:BOTTAM/INNER:-

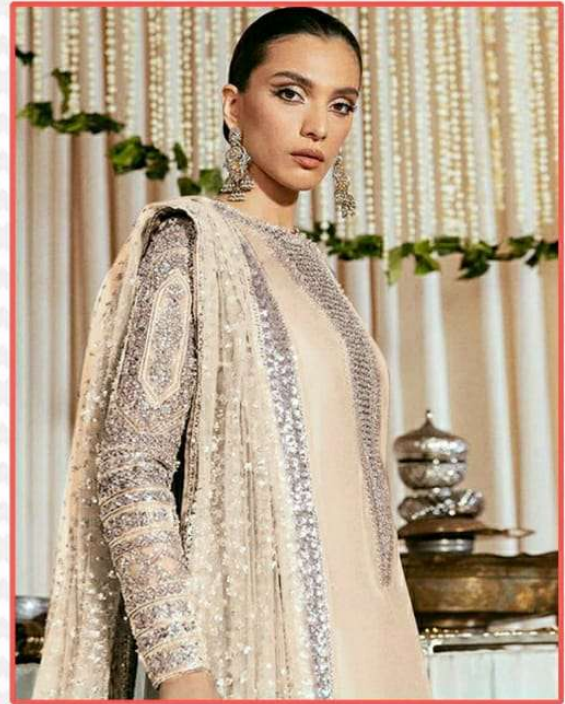
Santoon

--:DUPATTA:-

Net Embroidered.



D.no-184-D



-:TOP:-

Fox Georgette.

-:BOTTAM/INNER:-

Santoon.

-:DUPATTA:-

Net Embroidery.



D.no-175-A



TOP :-

HEAVY DULL ORAGNZA WITH HANDWORK

BOTTOM/INNER :-

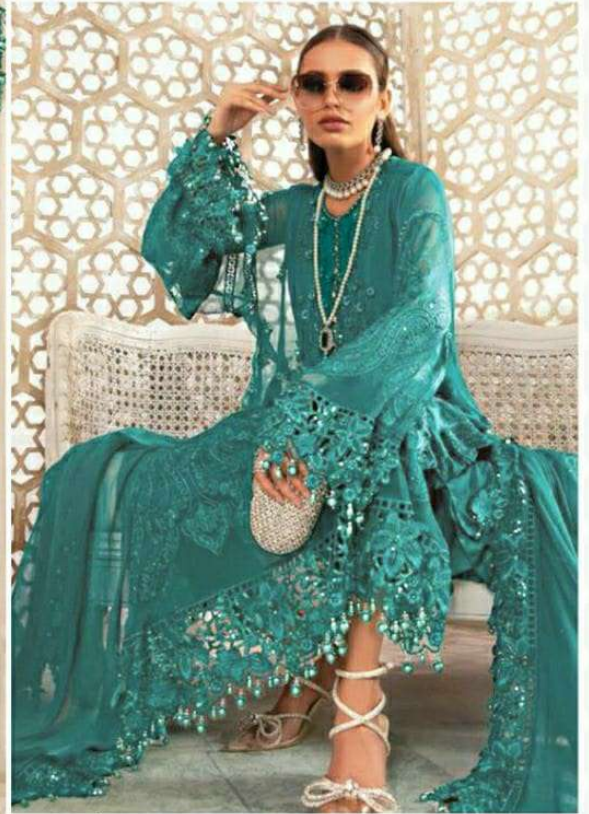
HEAVY SANTOON

DUPATTA :-

HEAVY DULL ORAGNZA EMBROIDERY



D.no-174-A

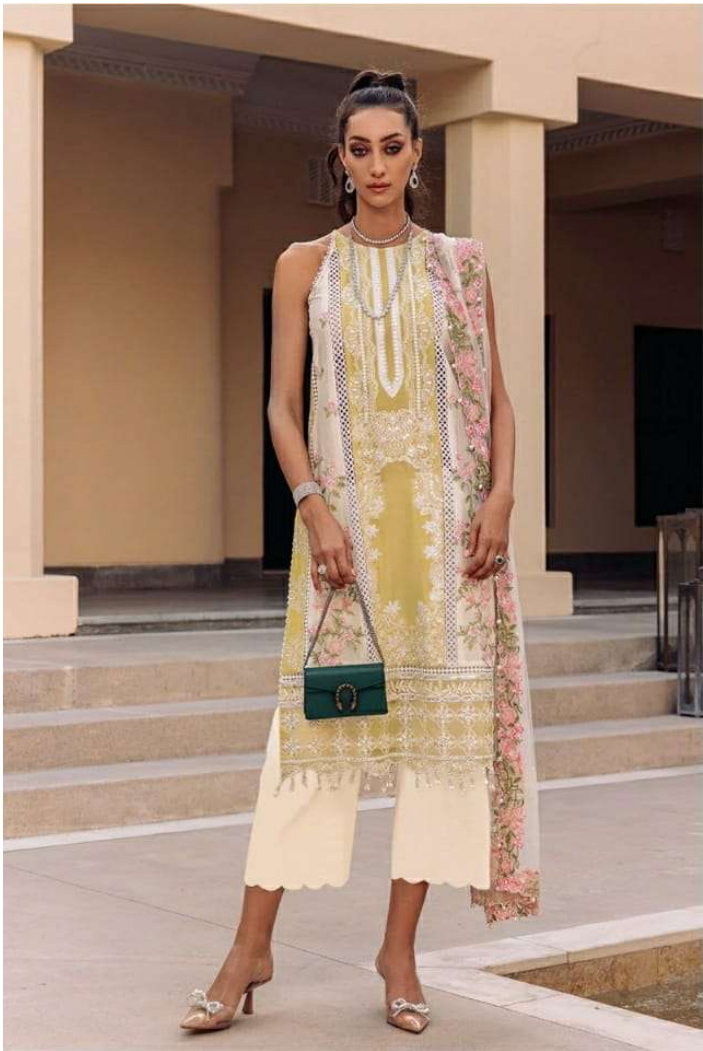


FABRIC DETAILS

TOP :- Fox Georgette

BOTTOM/INNER :- Santoon

DUPATTA :- Nazneen



201





DS-102-A

**TOP- FOX GEORGETTE
WITH EMBROIDERY
DUPATTA - NET EMBROIDERY
BOTTOM/INER - SANTOON**

WASHING INSTRUCTIONS
DO NOT USE HOT TIPS OF IRON FOR PRESSING OR REMOVAL
BEFORE CUTTING AND FINISHING, SHOULD BE DONE IN COLD OR WARM WATER
WASH COMPLETELY SEPARATELY FROM OTHERS
DO NOT USE AT HOME IN PARTS FROM IN ORDER TO AVOID COUP MARKS
WASH COLOURED AND WHITE FABRICS SEPARATELY
IRONING AND PRESSING IS TO BE DONE BY HAND IN BOUTIQUE SHOWUP
EXTRA CARE IN WASHING AND PRESSING IS REQUIRED





D.no-176-D



-:TOP:-

**Heavy Fox Georgette Embroidery
Work**

-:BOTTAM/INNER:-

Santoon

-:DUPATTA:-

Heavy Fox Georgette



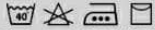
D.NO.224 B

TOP--PURE COTTON WITH HEAVY
SELF EMBROIDERY WITH FRILL

**BOTTOM /
INNER** -SEMI LAWN

DUPATTA-MUSHLEEN COTTON DUPATTA
WITH DIGITAL PRINT WITH FRILL

CARE INTRUCTIONS



- DRY CLEAN RECOMMENDED
- DO NOT OVEREXPOSE DAMP FABRIC TO STRONG SUNLIGHT
- DO NOT USE ANYTYPE OF BLEACH OR STAIN REMOVING CHEMICALS
- IRON AT MODERATE TEMPERATURE



