

RAJPATHTM
"The Secret of Style"

Anshikā
SILK







• T

The perfect matching accessory for your saree is not the jewelry but your smile.

RAJPATHTM
"The Secret of Style"



RAJATHTM
"The Secret of Style"



C
Colours
have
always
played an
in portent
role in our
culture this
bright en
semble
pays a
tribute to
our culture
240008





RAIPATHTM
"The Secret of Style"

The pallu, the
loose end
draped over
the shoulder,
becomes a
canvas for ar
tistic

240004



RAJATH™
"The Secret of Style"

G

It's a garment of grace and sophistication, typically six to nine yards long.

240006

RAJPATH™
"The Secret of Style"







RAJATHTM
"The Secret of Style"

F

Fusion saree styles blend modern elements with traditional aesthetics, adapting to changing fashion trends.

240007

RAPATHTM
"The Secret of Style"





C

India's rich cultural diversity is reflected in the variety of sarees, with each region showcasing unique styles.

240003

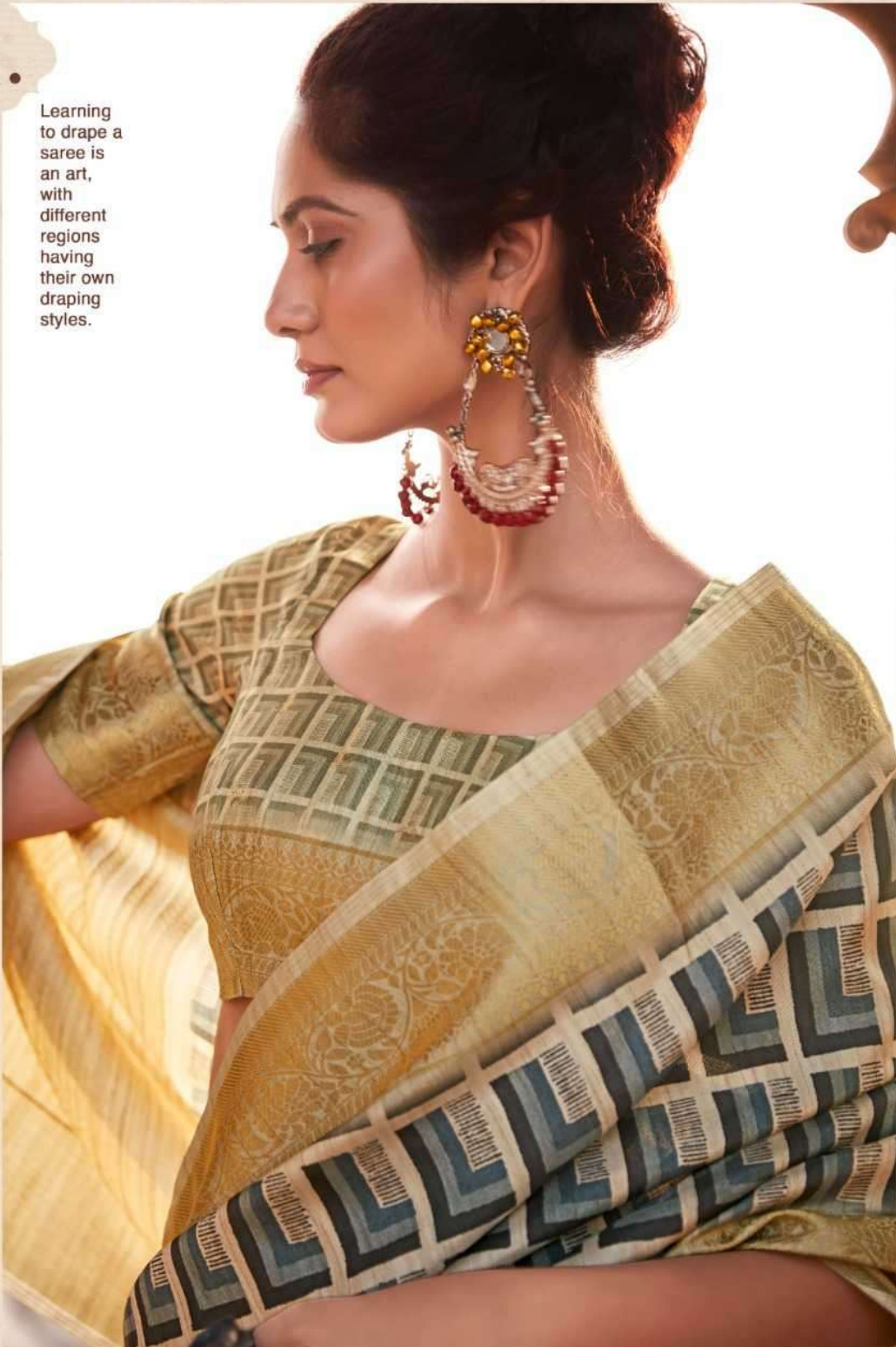




RAJPATHTM
"The Secret of Style"

l.

Learning to drape a saree is an art, with different regions having their own draping styles.



240004





S

Sarees
come in an
array of
colors,
materials,
and
intricate
designs.

240005

RAJPATHTM
"The Secret of Style"





RAJATH™
"The Secret of Style"



From classic to contemporary, sarees stand the test of time.



240002



A

The allure of the saree lies in its ability to tell stories without words, reflecting the cultural diversity of India.

RAJPATHTM
"The Secret of Style"



Stay CURIOUS Stay INSPIRED

RAJPATHTM
"The Secret of Style"

Anshikā
SILK





The saree is a traditional Indian garment, a symbol of elegance and culture.

240001

RAJPATH
"The Secret of Style"





||

Typically measuring six to nine yards in length, it's a canvas of colors, weaves, and motifs.

240002



240004



240008

RAJPATHTM
"The Secret of Style"

Anshikā
SILK



240001



240002



240003



240005



240006



240007