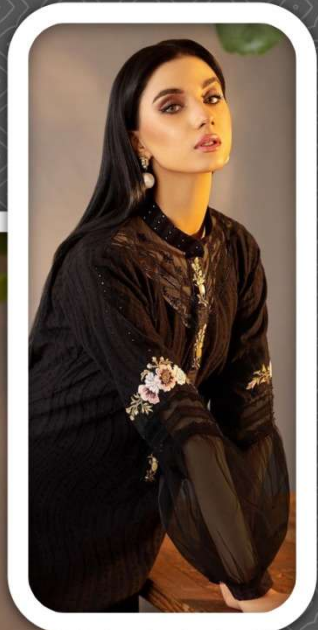


Luxuria
Trendz

#1308



Luxuria
Trendz
#1308







A woman with long dark hair is shown in a black ensemble. The top is a long-sleeved piece with a high lace collar and intricate floral embroidery in white and gold on the sleeves. The bottom piece is a textured knit. She is wearing large pearl earrings and looking upwards. The background is a soft-focus indoor setting with a wooden table and green foliage.

Luxuria
Trendz

#1308

Luxuria
Trendz

#1308



Luxuria
Trendz

#1308

