

 *Zulfat*<sup>®</sup>  
Designer Suits

# RIYANA



NEW ARRIVALS

"Fashion is part of the daily air and it changes all the time, with all the events. You can even see the approaching of a revolution in clothes. You can see and feel everything in clothes."



520 - 002





 **Zulfat**<sup>®</sup>  
Designed since 2000

# RIYANA

"What you wear is how you present yourself to the world, especially today, when human contacts are so quick. Fashion is instant language."



 *Zulfat*<sup>®</sup>  
Designer Suits

# RIYANA





Zulfat®  
Designer Suits



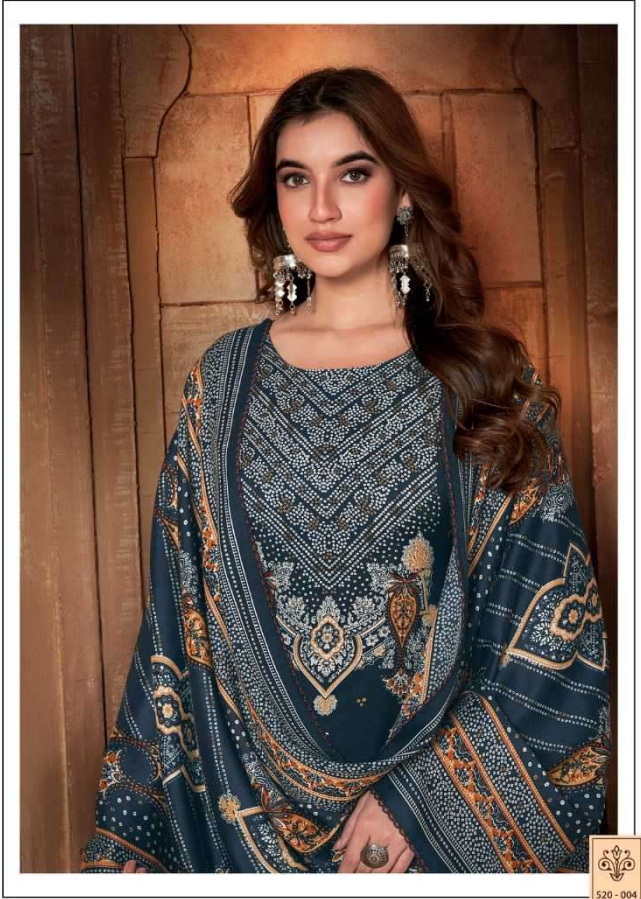
"Don't be into trends. Don't make fashion own you, but you  
decide what you are, what you want to express by the way you  
dress and the way to live."

520 - 005

Zulfat®  
Designs Suits



520-003





Zulfat®  
Designer Suits



"Don't be into trends. Don't make fashion own you, but you  
decide what you are, what you want to express by the way you  
dress and the way to live."

520 - 001





520 - 001



520 - 002



520 - 003



520 - 004



520 - 005



520 - 006



520 - 007



520 - 008





Zulfat®  
Designer Suits

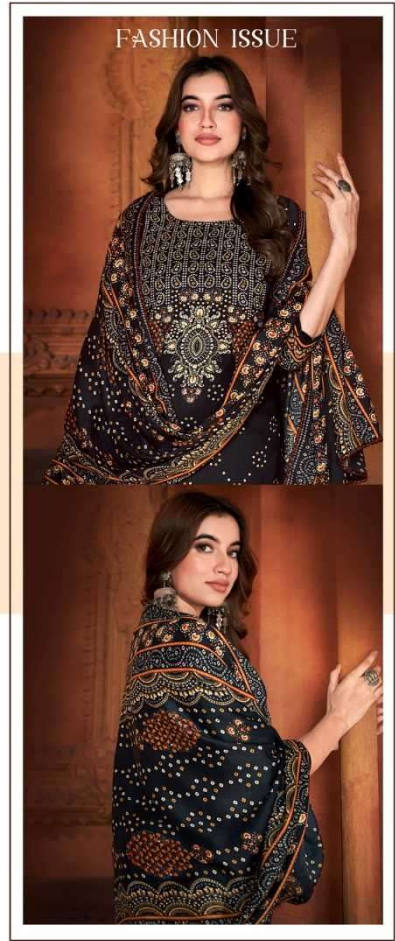
✦ MOOD OF WARMTH ✦

"Being well dressed hasn't much to do with having good clothes.  
It's a question of good balance and good common sense."



Zulfat®  
Designs Suits





TOP

100% PURE PREMIUM WOOLLEN PASHMINA. (2.50 MTR APX)

DUPATTA

100% PURE PREMIUM WOOLLEN PASHMINA SHAWL. (2.30 MTR APX)

BOTTOM

100% PURE PASHMINA SPUN. (3 MTR APX)

