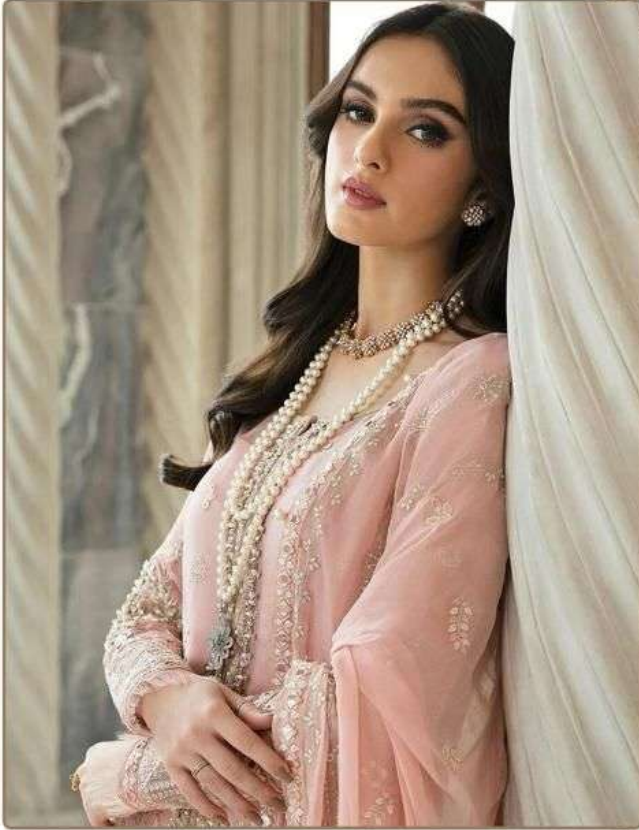



MAHNURTM
— FASHION —

D.NO.34002



TOP - FAUX GEORGATTE WITH EMBROIDERY SEQUENCE
DAIMOND WORK

DUPATTA - NAJMEEN WITH EMBROIDERY FANCY LESS

BOTTOM | INNER - HEAVY SANTOON

Ⓢ DRY CLEAN ONLY.
✗ DO NOT USE ANY BLEACH OR STAIN REMOVING CHEMICAL.
IRON THE FABRIC AT MODERATE TEMPERATURE.



MAHNUR
FASHION

D.NO.34002



TOP - FAUX GEORGETTE WITH EMBROIDERY SEQUENCE SHAMING WORK
DUPATTA - SALMEEN WITH EMBROIDERY FANCY LESS
BOTTOM | INNER - HEAVY SARTOON

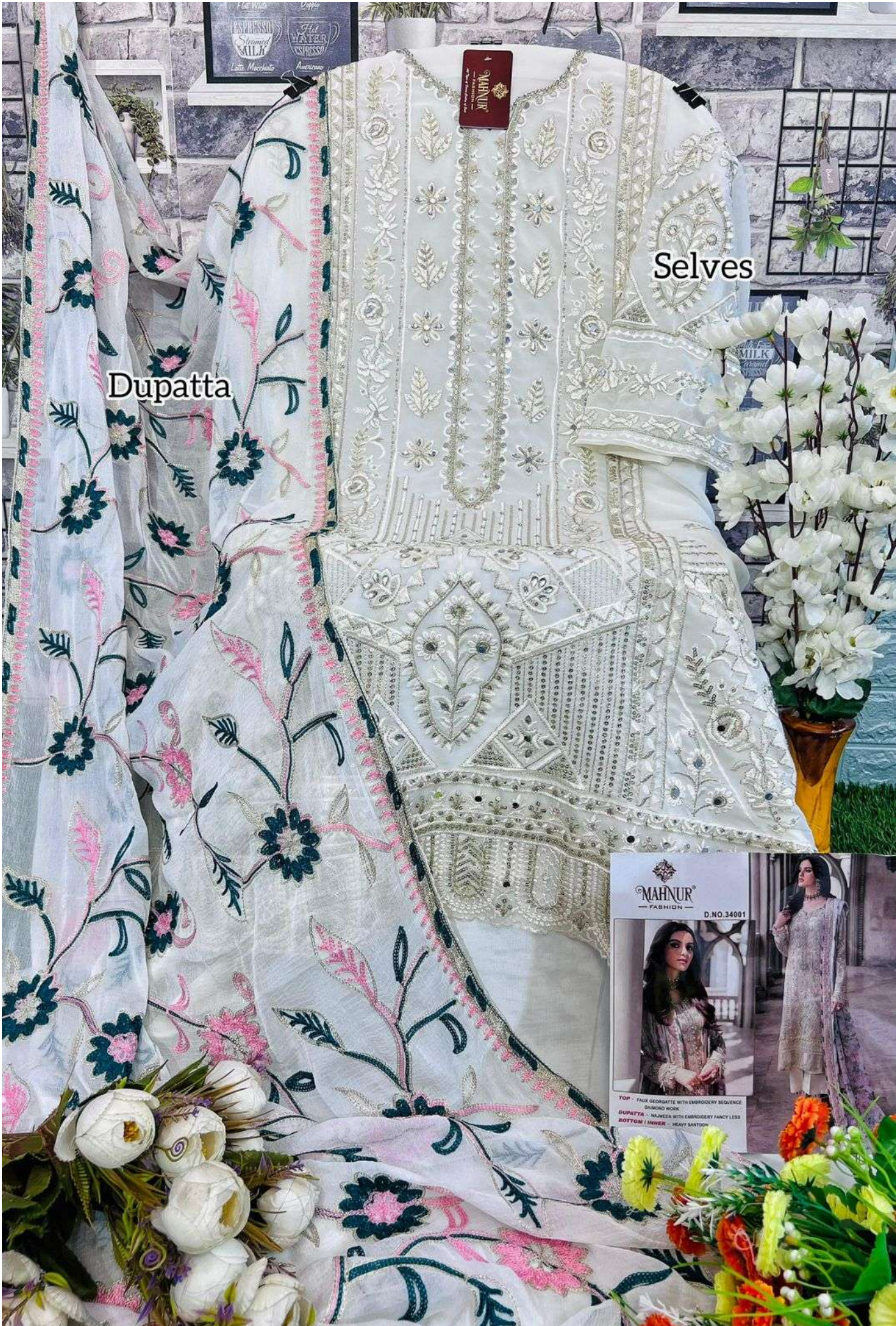
© 2017 CLEAN ONLY
* DO NOT USE ANY BLEACH OR STAIN REMOVING CHEMICAL
WASH THE FABRIC AT MODERATE TEMPERATURE.



MAHNUR
FASHION D.NO.34001



TOP - FAUX GEORGATTE WITH EMBROIDERY SEQUENCE
DIAMOND WORK
DUPATTA - SILK WITH EMBROIDERY FANCY LESS
BOTTOM / INNER - HEAVY SANTOON



Dupatta

Selves



MAHNUR
FASHION

D.NO.34001

TOP - FAUX GEORGETTE WITH EMBROIDERY SEQUINCE & DIAMOND WORK
DUPATTA - SILK WITH EMBROIDERY FANCY LESS
BOTTOM - INNER - HEAVY SANTON



Dupatta

Selves

MAHNUR
— FASHION —
D.NO.34002

TOP - PINK GEORGETTE WITH EMBROIDERY DESIGN
DIAMOND WORK
DUPATTA - NET WITH EMBROIDERY FANCY LACE
BOTTOM / INNER - HEAVY SANTON

DRY CLEAN ONLY
DO NOT USE ANY BLEACH OR STAIN REMOVING CHEMICAL.
WASH THE FABRIC AT MODERATE TEMPERATURE.

MAHNUR
FASHION

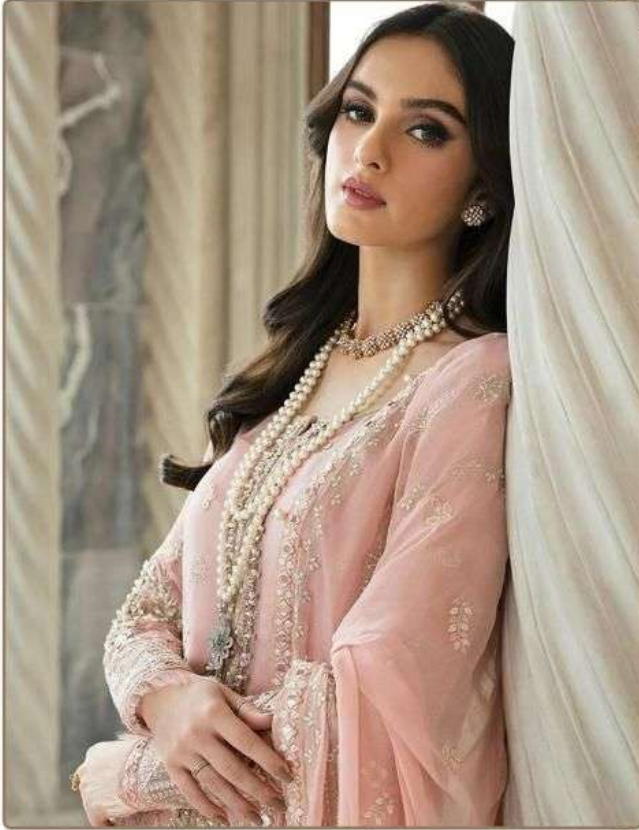


❖
34002




MAHNURTM
— FASHION —

D.NO.34002



TOP - FAUX GEORGATTE WITH EMBROIDERY SEQUENCE
DAIMOND WORK

DUPATTA - NAJMEEN WITH EMBROIDERY FANCY LESS

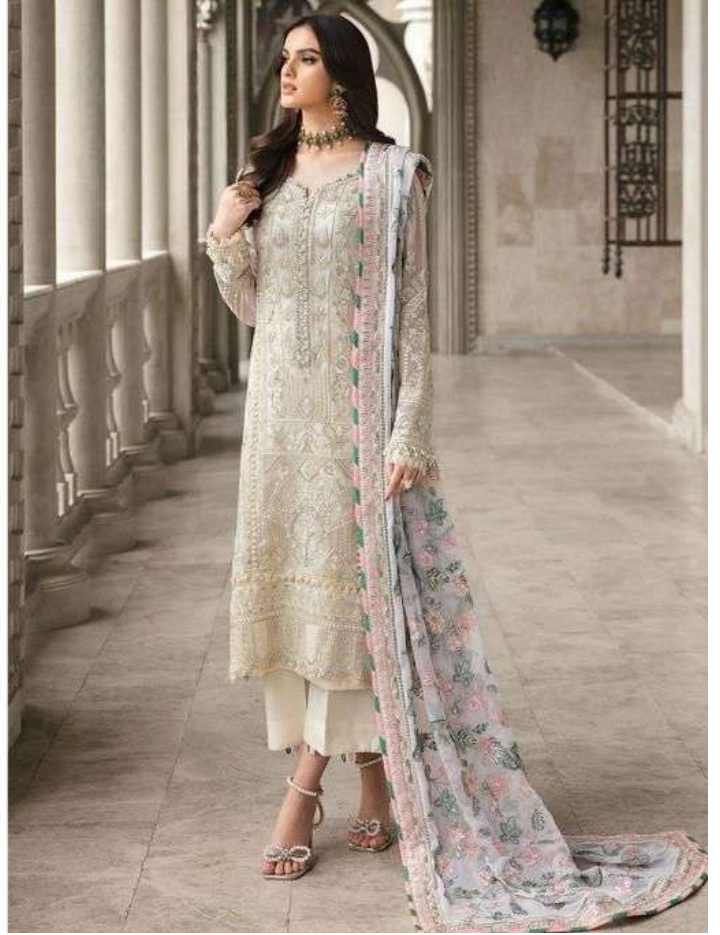
BOTTOM | INNER - HEAVY SANTOON

Ⓢ DRY CLEAN ONLY.
✗ DO NOT USE ANY BLEACH OR STAIN REMOVING CHEMICAL.
IRON THE FABRIC AT MODERATE TEMPERATURE.

MAHNUR
FASHION



❖
34001




MAHNURTM
— FASHION —

D.NO.34001



TOP - FAUX GEORGATTE WITH EMBROIDERY SEQUENCE
DAIMOND WORK

DUPATTA - NAJMEEN WITH EMBROIDERY FANCY LESS

BOTTOM | INNER - HEAVY SANTOON

Ⓢ DRY CLEAN ONLY.
✘ DO NOT USE ANY BLEACH OR STAIN REMOVING CHEMICAL.
IRON THE FABRIC AT MODERATE TEMPERATURE.

MAHNUR
VOL-34



MAHNUR
VOL-34



MAHNUR
VOL-34



D.No.34001



D.No.34002