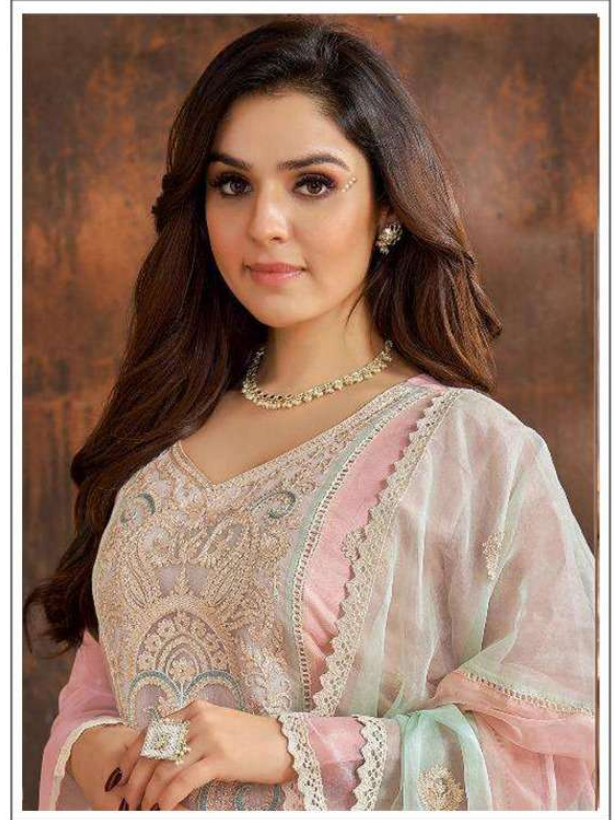




HOOR TEX



OR-23-A

TOP- DULL ORGANZA WITH HEAVY EMBROIDERY

BOTTOM/INNER- SANTOON

DUPATTA/NET- ORGANZA WITH WORK WITH 4 SIDE CUT WORK LACE

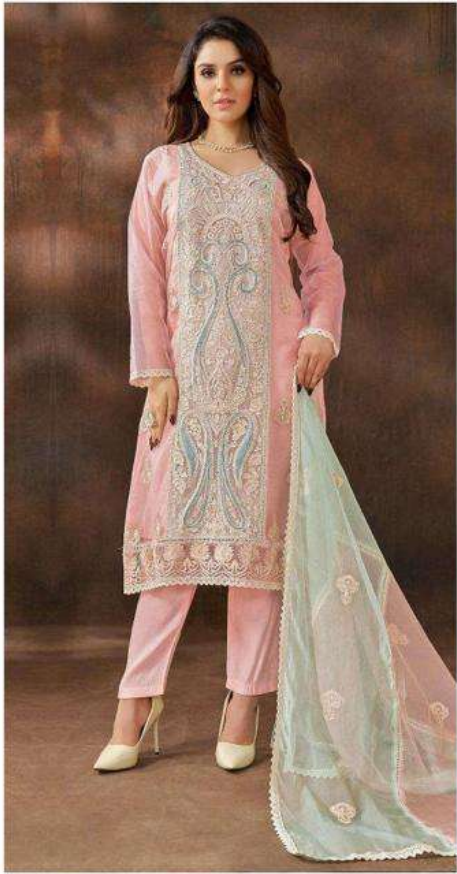
- ☉ DRY CLEAN ONLY.
- ☒ DO NOT USE ANY BLEACH OR STAIN REMOVING CHEMICAL.
- ☎ IRON THE FABRIC AT MODERATE TEMPERATURE.











OR-23 A



OR-23 B



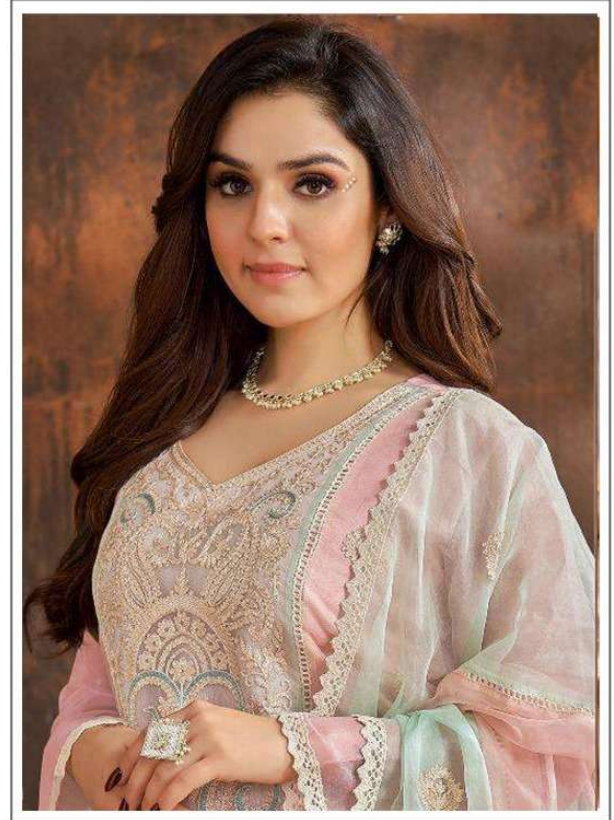
OR-23 C



HOOR TEX



HOOR TEX



OR-23-A

TOP- DULL ORGANZA WITH HEAVY EMBROIDERY

BOTTOM/INNER- SANTOON

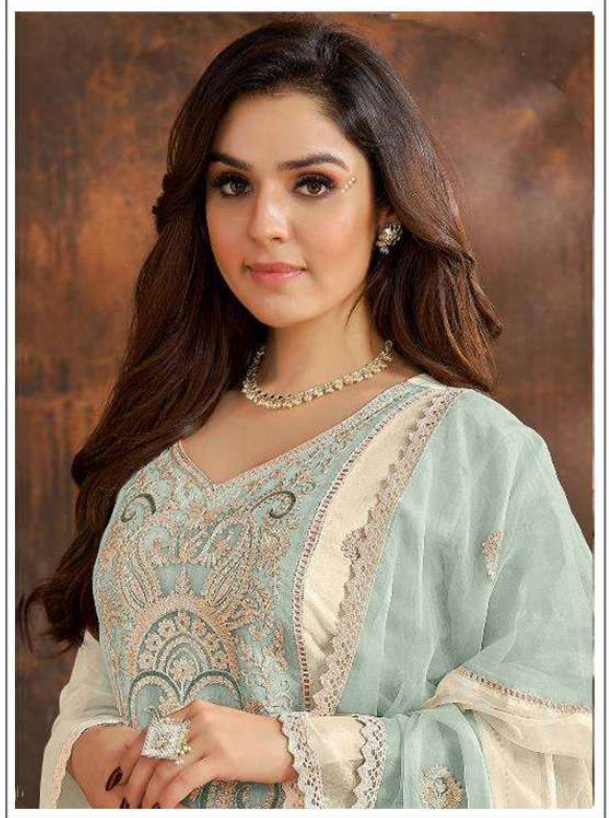
DUPATTA/NET- ORGANZA WITH WORK WITH 4 SIDE CUT WORK LACE

- ☉ DRY CLEAN ONLY.
- ⊗ DO NOT USE ANY BLEACH OR STAIN REMOVING CHEMICAL.
- ☎ IRON THE FABRIC AT MODERATE TEMPERATURE.





HOOR TEX



OR-23-C

TOP- DULL ORGANZA WITH HEAVY EMBROIDERY

BOTTOM/INNER- SANTOON

DUPATTA/NET- ORGANZA WITH WORK WITH 4 SIDE CUT WORK LACE

-  DRY CLEAN ONLY.
-  DO NOT USE ANY BLEACH OR STAIN REMOVING CHEMICAL.
-  IRON THE FABRIC AT MODERATE TEMPERATURE.





HOOR TEX



OR-23-B

TOP- DULL ORGANZA WITH HEAVY EMBROIDERY

BOTTOM/INNER- SANTOON

DUPATTA/NET- ORGANZA WITH WORK WITH 4 SIDE CUT WORK LACE

-  DRY CLEAN ONLY.
-  DO NOT USE ANY BLEACH OR STAIN REMOVING CHEMICAL.
-  IRON THE FABRIC AT MODERATE TEMPERATURE.

