

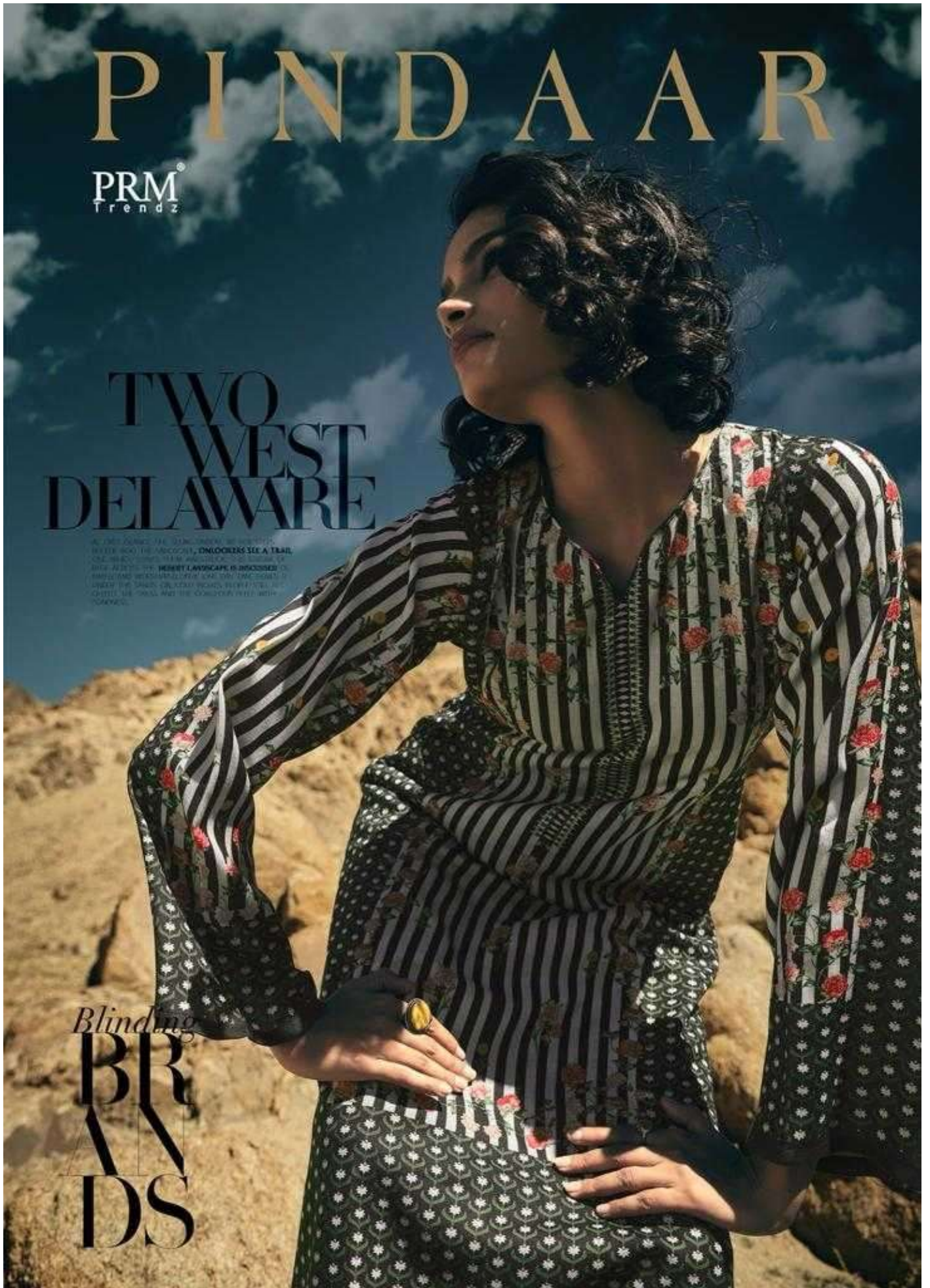
PINDAAR

PRM[®]
Trendz

TWO WEST DELAWARE

AT 1961 JAMES EARL RAY, DRIVEN BY AN UNUSUAL
MONEY HUNGER, UNCOVERS A TRAIL
THAT BRINGS HIM TO THE MOUNTAINS OF
WEST VIRGINIA. THE MOUNTAIN LANDSCAPE IS DISCUSSED IN
MAY 1962 AND DISCOVERED BY EARL AND DISCOVERED IN
UNDER THE SANDS COLLECTOR BEARS RESEMBLANCE TO
CHIEF THE TRAIL AND THE COLLECTOR WITH
TUNING.

Blinding
**BR
AN
DS**



PRM[®]
Trendz



5266



5267



5270



5271



5268



5269




5272



5273

PRM[®]
Trendz

A woman with dark hair, wearing a long, flowing yellow dress with intricate floral embroidery, stands on a large, weathered rock formation. She is looking towards the camera with a neutral expression. The background features a vast desert landscape with a line of green trees, a cemetery of white domed structures, and snow-capped mountains under a bright blue sky with scattered white clouds. The lighting is bright, suggesting a sunny day.

AT FIRST GLANCE, SHE SEEMS UNREAL. AS HER STEPS REcede INTO THE LANDSCAPE, **ONLOOKERS**
SEE A TRAIL, ONE WHICH LEAVES THEM AWESTRUCK. THIS STREAK OF BLUE ACROSS THE
DESERT LANDSCAPE IS DISCUSSED, DEBATED, AND WORSHIPPED, UNTIL ONE DAY, TIME BURIES IT
UNDER THE SANDS. ON COLD NIGHTS, PEOPLE STILL RECOLLECT THE DRESS AND THE GORGEOUS
BELLE WITH FONDNESS.



PRM[®]
Trendz

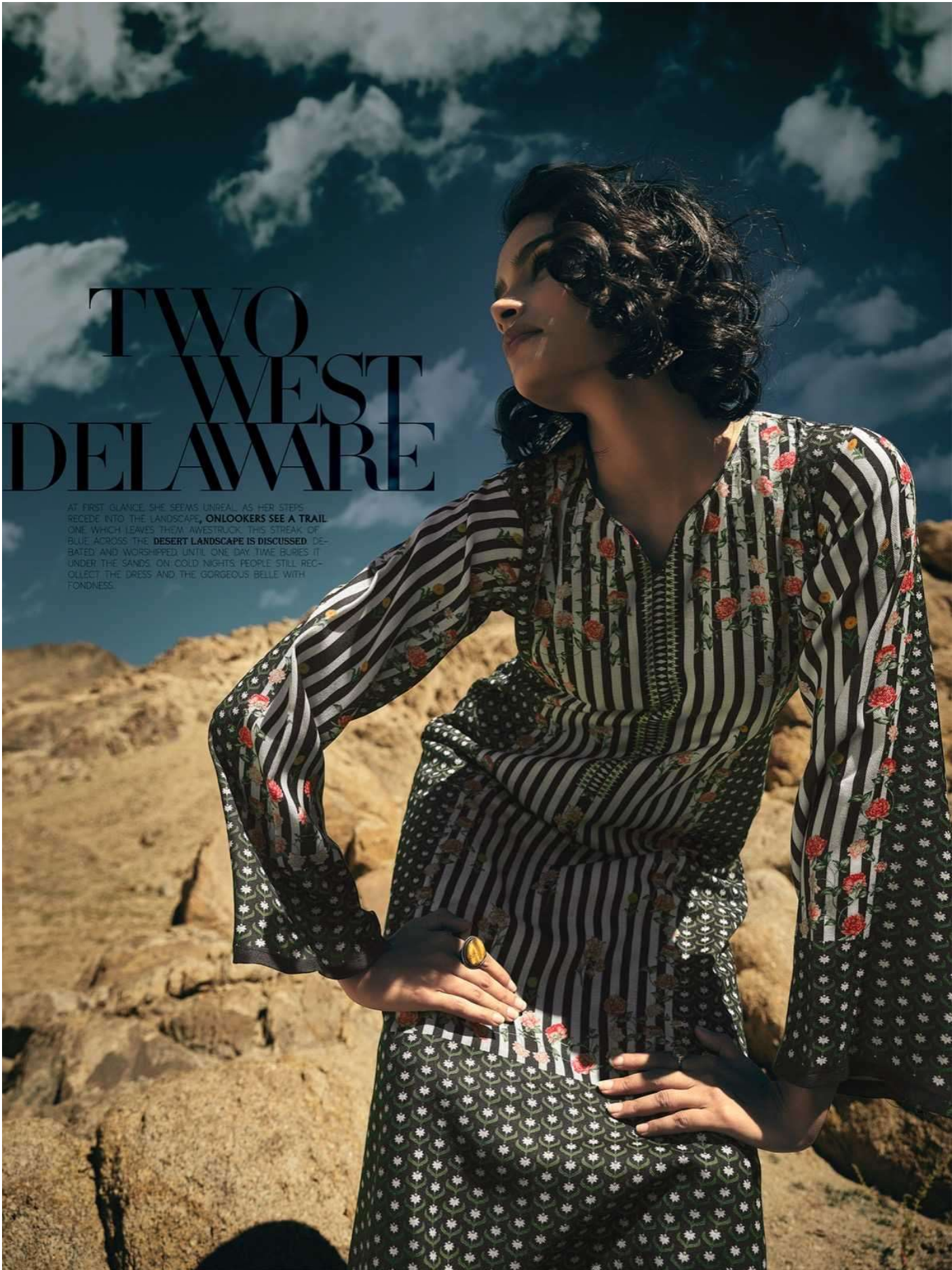


PRM[®]
Trendz



TWO WEST DELAWARE

AT FIRST GLANCE, SHE SEEMS UNREAL, AS HER STEPS REcede INTO THE LANDSCAPE, ONLOOKERS SEE A TRAIL ONE WHICH LEAVES THEM AWESTRUCK. THIS STREAK OF BLUE ACROSS THE DESERT LANDSCAPE IS DISCUSSED, DEBATED AND WORSHIPPED UNTIL ONE DAY TIME BLIES IT UNDER THE SANDS. ON COLD NIGHTS, PEOPLE STILL RECOLLECT THE DRESS AND THE GORGEOUS BELLE WITH FONDNESS.



PRM[®]
Trendz

Against the golden dreamscape of Rajasthan, she blends in like she was always meant to. Her attire is the colour of sand - an alloy of culture and untold history. Every step she takes is a story, whispered from bystander to bystander or...about a lady sublime.





PRM[®]
Trendz

SPELLBINDING MAGIC

CLAD IN THIS SALWAR KAMEEZ, YOU HAVE POWERS BEYOND THE ORDINARY.



PRM[®]
Trendz



PRM[®]
Trendz



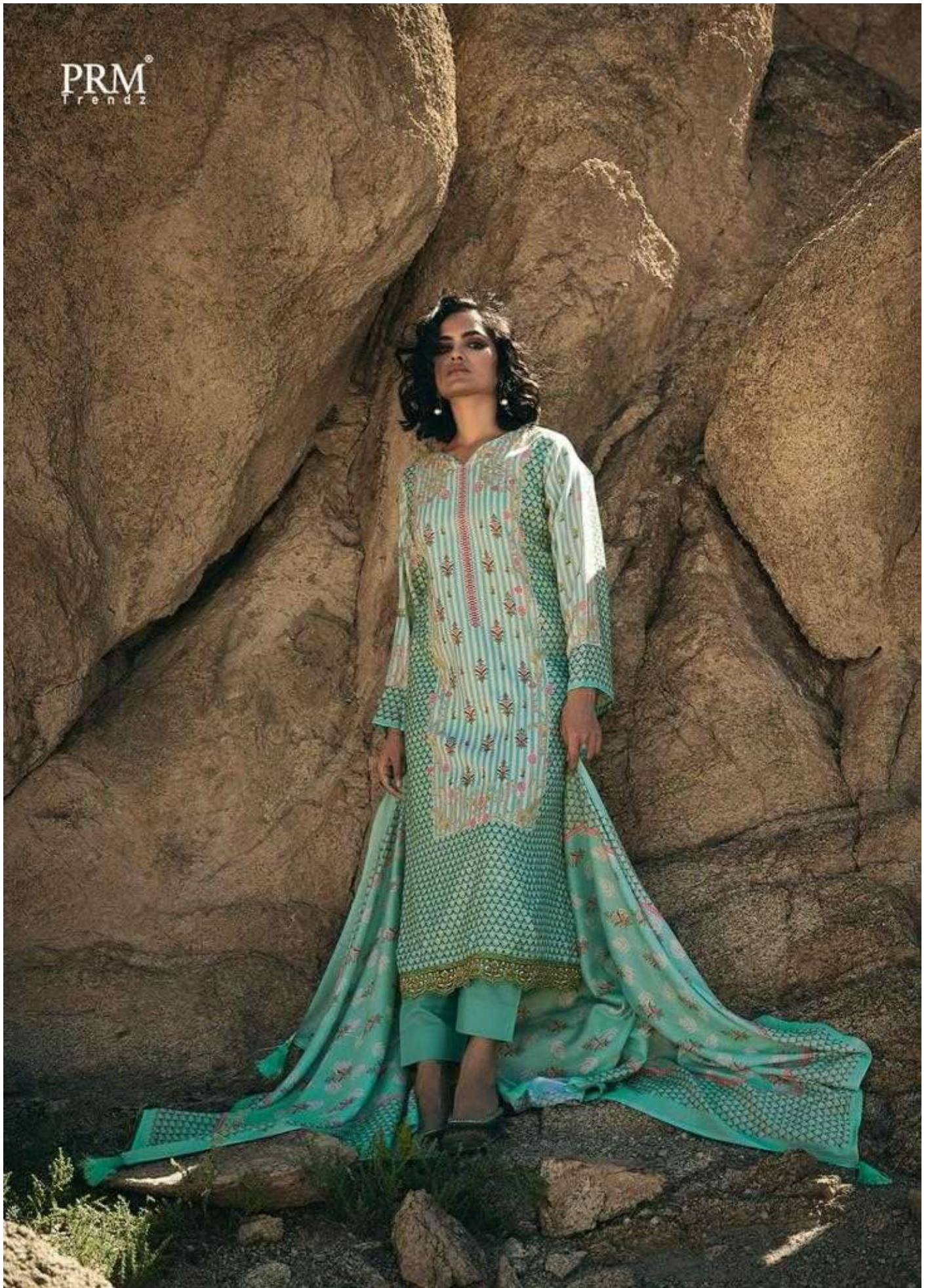
Against the golden dreamscapes of Rajasthan, she stands in like she was always meant to. **HER ATTIRE IS THE COLOUR OF** sand - an alloy of culture and untold history. Every step she takes is a story, whispered from bystander to bystander about a lady unknown.

PRM[®]
Trendz



beauty
Modern

PRM[®]
Trendz





SPELLBINDING MAGIC

CLAD IN TISSUE WAR KAMEEZ, YOU HAVE PICTURES BEYOND THE ORDINARY.



Against the golden shimmer of Rajasthan, she stands in life, she wears always
mind to, HER ATTIRE IS THE
COLOUR OF sand, an ally of cul-
ture and untold
history. Every step she takes is a story,
whispered from bystander to by-
stander, about a lady unknown.

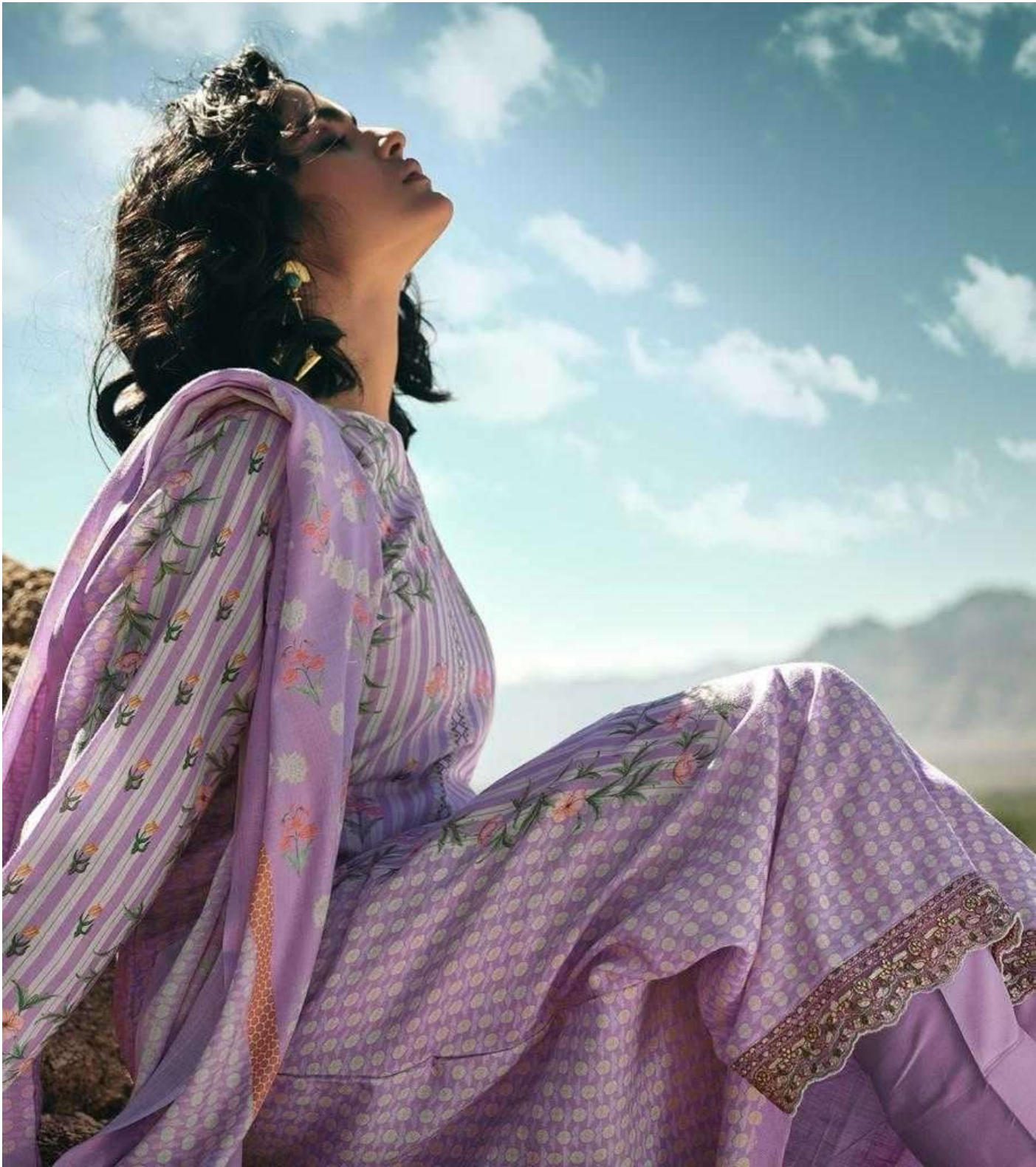
PRM[®]
Trendz



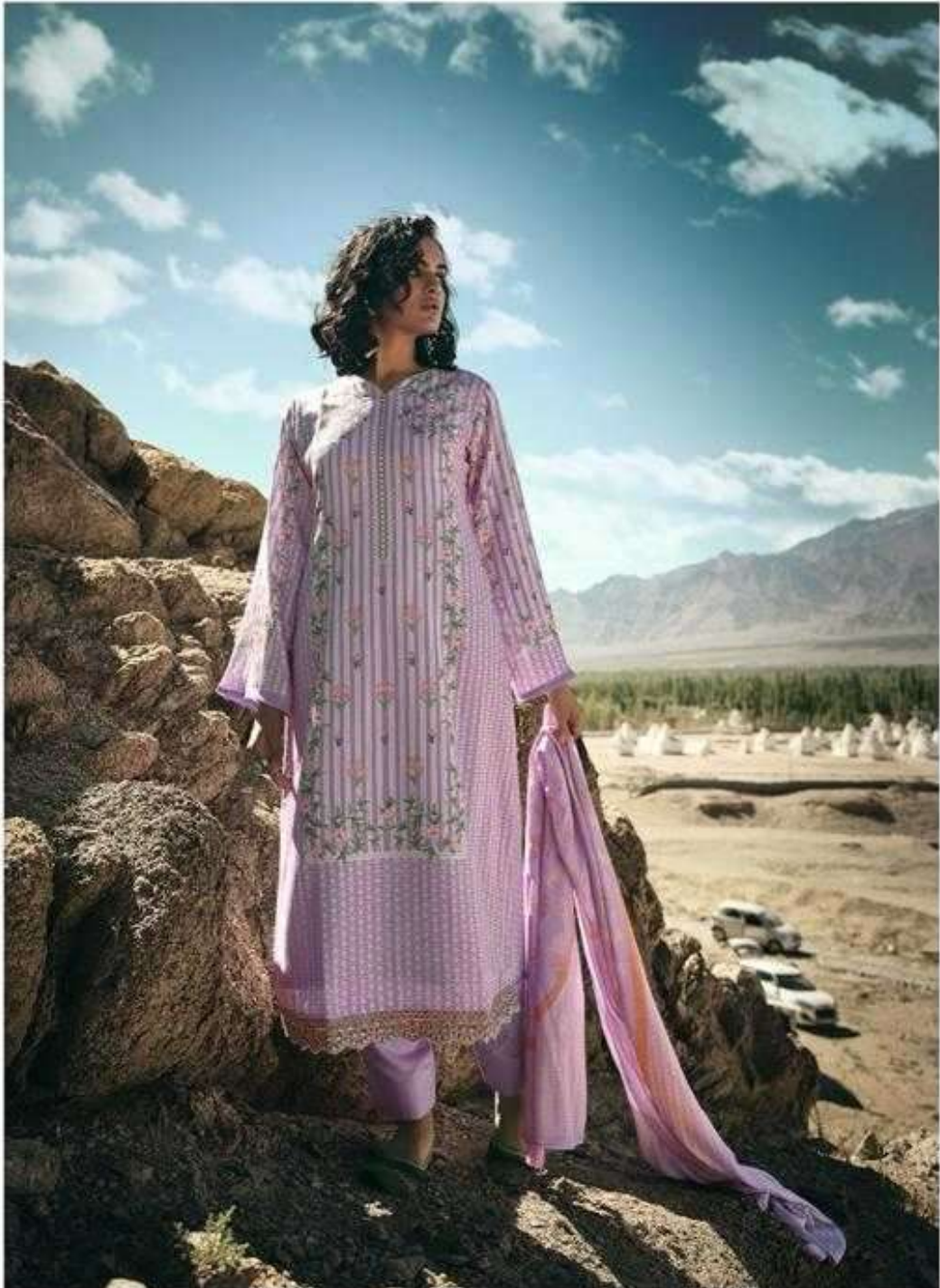
AT FIRST GLANCE SHE SEEMS UNREAL AS HER
STEPS MIRROR INTO THE LANDSCAPE, **ONLOOKERS**
SEE A TRAIL ONE WHICH LEADS THEIR ANTI-
STRESS THIS STRAIGHT UP HILLS ACROSS THE
DESERT LANDSCAPE IS DISCUSSED DENIED AND
WORLD-FREE LIFE ONE DAY THAT BLURS IT UNDER
THE SANDS ON COOL NIGHTS PEOPLE STILL REC-
OLLECT THE DRESS AND THE GORGEOUS BELLE
WITH FEMININE

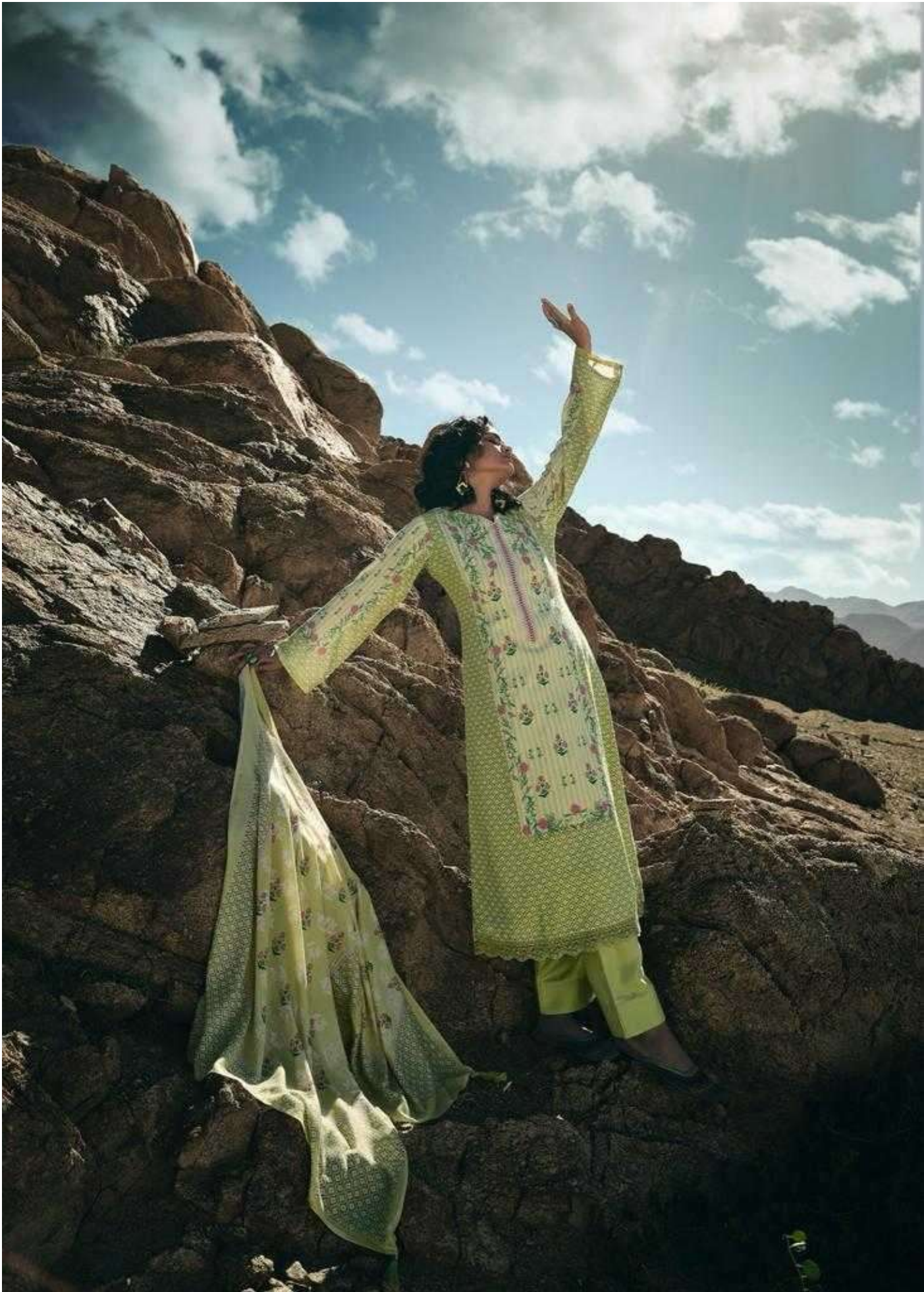
PRM[®]
Trendz





PRM[®]
Trendz



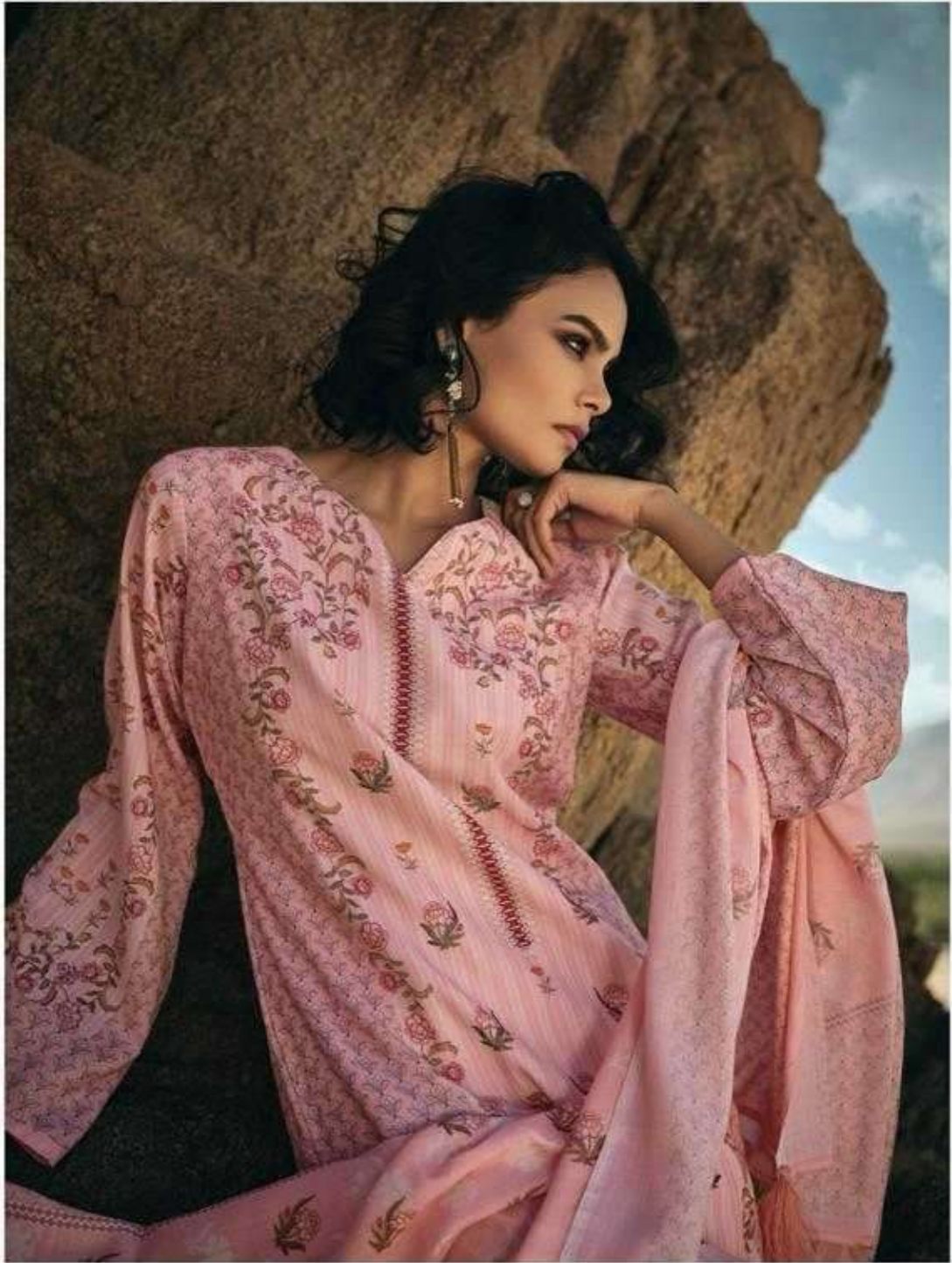


M A G I C A L C O B A L T



PRM[®]
Trendz





SPELLBINDING MAGIC

STYLING: TIPSAL WABEEMPTZ, MAKEUP: PUNJAB PUNJAB BY THE CHERRY

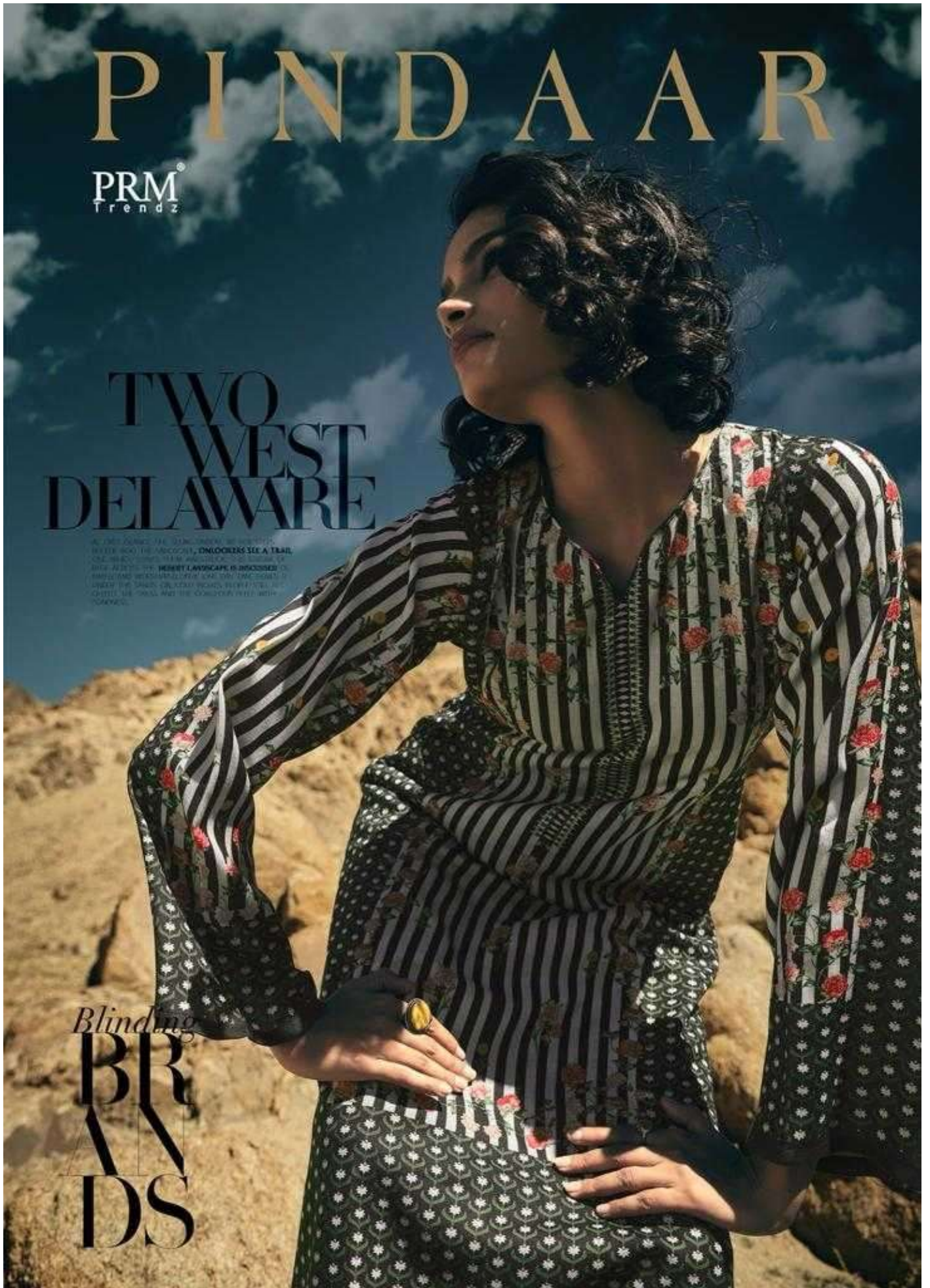
PINDAAR

PRM
Trendz

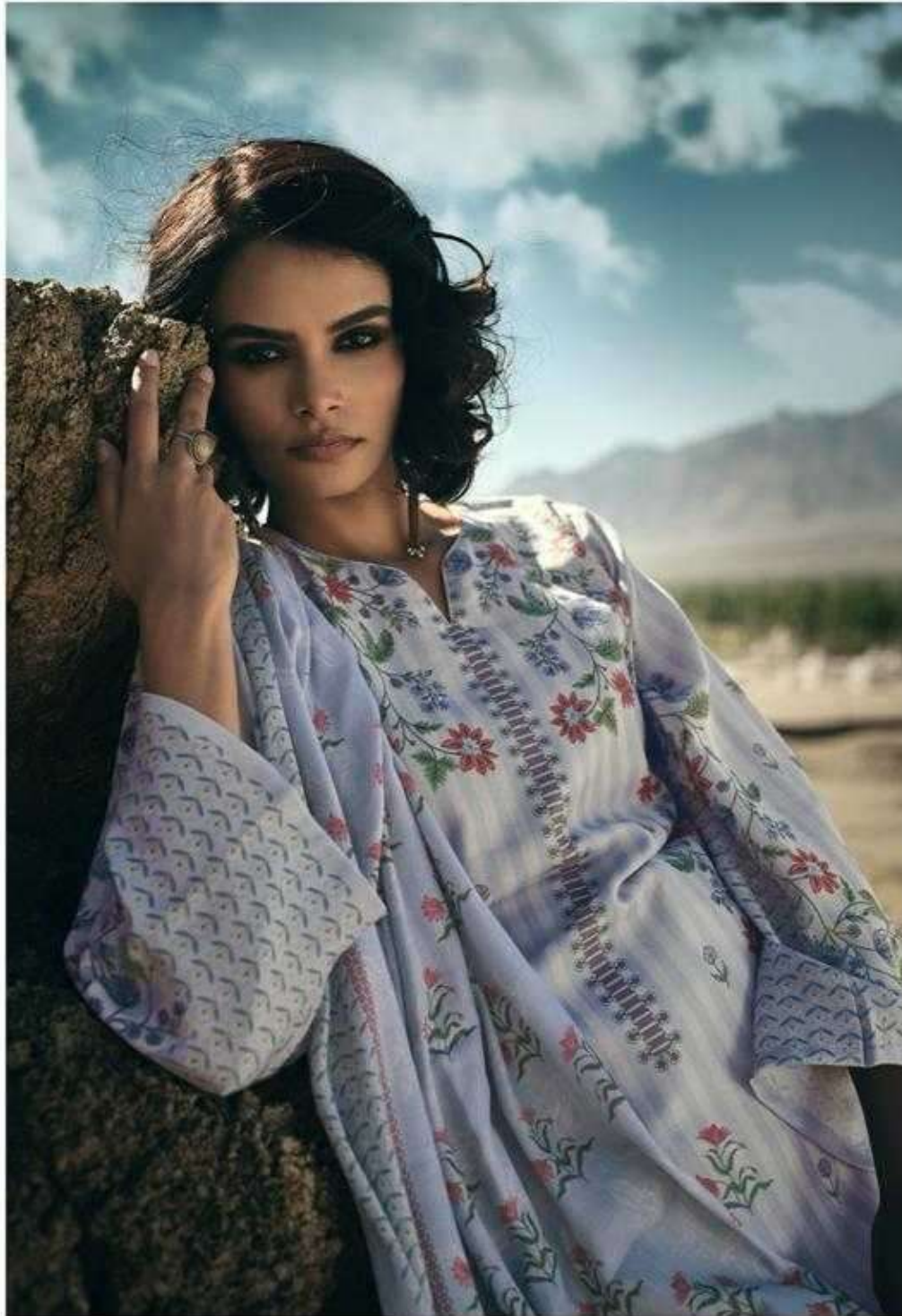
TWO WEST DELAWARE

AT 1961 JAMES EARL RAY, DRIVING AN IMPERIAL
WRECKED THE AIRCRAFT, ONLOOKERS SEE A TRAIL
OF BLOOD. THE FBI INVESTIGATES THE TRAIL OF
BLOOD. THE HERBERT LAWSHIP IS DISCOVERED IN
MAY 1962 AND INVESTIGATED BY THE FBI. THE
UNDER THE SANDS COLLECTOR BEARS BLOODSTAINS. THE
CLOTTED THE TRAIL AND THE COLLECTOR FEELS WITH
TERRORS.

Blinding
**BR
AN
DS**



PRM[®]
Trendz



Against the golden dreaminess of Rajasthan, she stands in life she was always meant to. HER ATTIRE IS THE COLOUR OF sand: an alloy of culture and untold history. Every step she takes is a story, whispered from bystander to bystander about a lady's journey.



Against the golden desamocage of Rajast
then, she stands in like she was always
meant to. HER ATTIRE IS THE
COLOR OF
sand, an alloy of
lace and silk.
History. Every step she takes is a story
whispered from bytander to by
stander, about a lady's culture.

