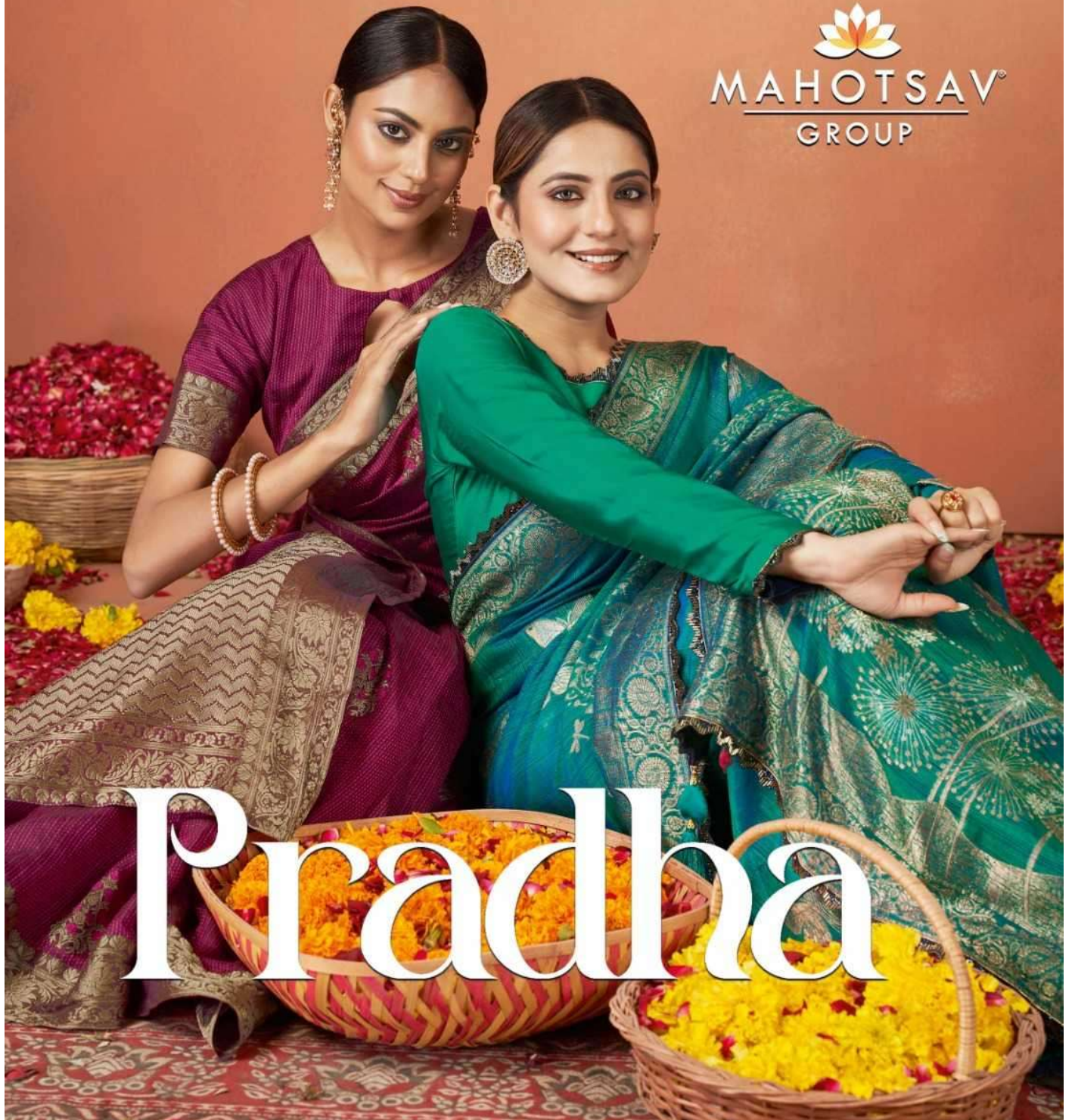


# NORRITA

Royal



MAHOTSAV<sup>®</sup>  
GROUP



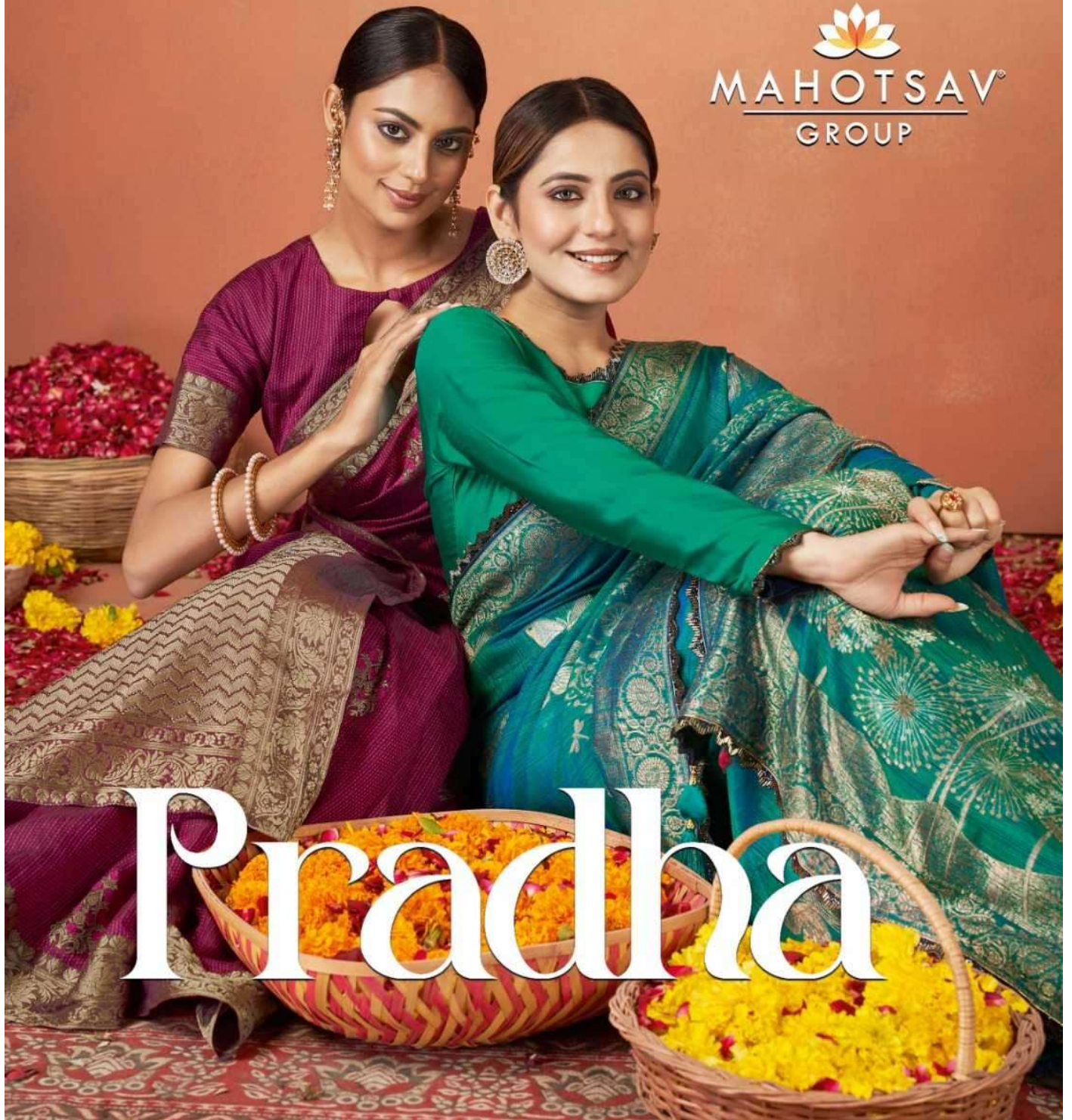
# Pradhha

# NORRITA

Royal



MAHOTSAV<sup>®</sup>  
GROUP



# Pradhha

SKU Code	Fabric		Length (m)		Work	Pattern	Blouse
	Saree	Blouse	Saree	Blouse	Printed/Embroidered		
43407	Kanjivaram two tone Silk	Malai Satin	5.5	0.8	Texture with readymade & hand work lace	Woven Design	unstitched Blouse Piece
43408	Organza Silk	Silk Crepe	5.5	0.8	Stone Work	Woven Design	unstitched Blouse Piece
43409	Organza Silk	Organza Silk	5.5	0.8	Sequence & Thread Work	Woven Design	unstitched Blouse Piece
43410	Tusser Silk	Silk Crepe	5.5	0.8	Stone Work	Woven Design	unstitched Blouse Piece
43411	Kanjivaram two tone Silk	Silk Crepe	5.5	0.8	readymade & hand work lace	Woven Design	unstitched Blouse Piece
43412	Tusser Silk	Tusser Silk	5.5	0.8	Floral Thread Embroidered	Woven Design	unstitched Blouse Piece
43413	Organza Silk	Silk Crepe	5.5	0.8	Sequence & Thread with cord Embroidered	Woven Design	unstitched Blouse Piece
43414	Tusser Silk	Silk Crepe	5.5	0.8	Sequence & Thread with cord Embroidered	Woven Design	unstitched Blouse Piece
43415	Kanjivaram two tone Silk	Silk Crepe	5.5	0.8	Sequence & Jari Work	Woven Design	unstitched Blouse Piece
43416	Tusser Satin Silk	Tusser Satin Silk	5.5	0.8	readymade & hand work lace	Woven Design	unstitched Blouse Piece
43417	Tusser Silk	Tusser Silk	5.5	0.8	Stone Work	Woven Design	unstitched Blouse Piece
43418	Crepe Silk	Taffeta	5.5	0.8	Embroidery, sequence, Zari and Stone	Woven Design	unstitched Blouse Piece
43419	Pure Viscose Weaved Silk	Brocade Silk	5.5	0.8	Resham , Zari and Cord embroidery	Woven Design	unstitched Blouse Piece



43418

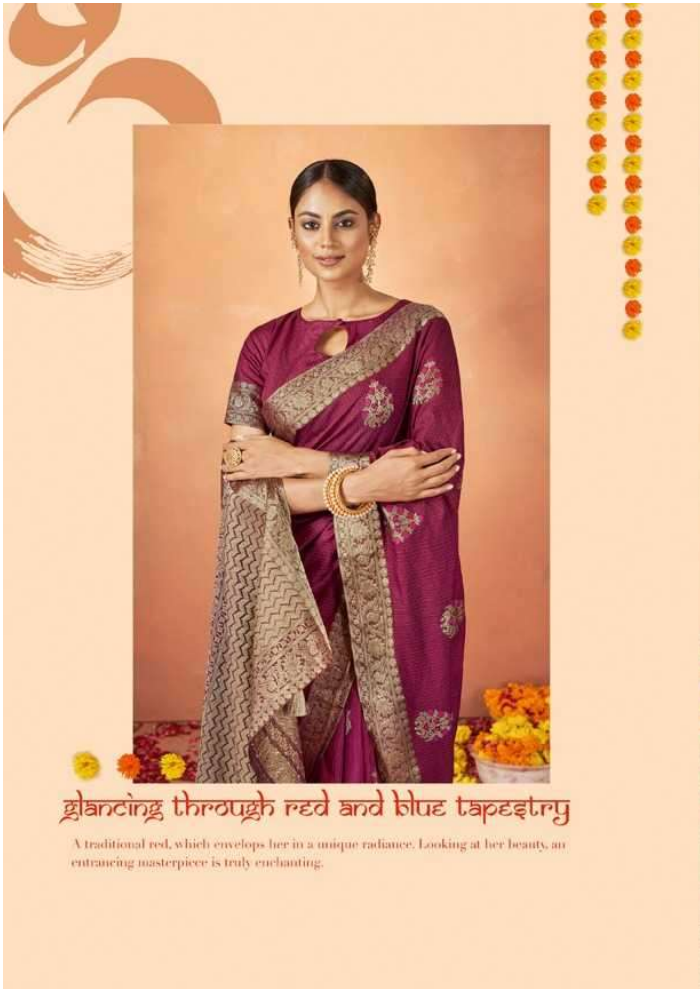
Fabric : Crepe Silk



43419

Fabric : Pure Viscose Silk





*glancing through red and blue tapestry*

A traditional red, which envelops her in a unique radiance. Looking at her beauty, an entrancing masterpiece is truly enchanting.




43417  
Fabric: Tussar Silk



**chartreuse grace and its elegant hues**  
This lively line mirrors a woman's fortitude, echoing her unwavering spirit. Each fold weaves a narrative of strength and allure, encapsulating the essence of her power.



43409  
Fabric - Organza Silk



ચાર્ટ્રેુઝ ગ્રાઉ અને તે દોઢગાંત નુદે

Make this Chartreuse Silk Saree to find femininity in bold expression.  
This vibrant hue mirrors a woman's strength, echoing her resolute spirit.

43409

Fabric : Organza Silk



## रिच टांगलडॉन डायनामिटे रिडेइ

The dynamics of rich crimson folds with Organza Silk Saree, makes your traditional wear with superb modernity. Classic patterns evolve into contemporary elegance, narrating a compelling story.

43408  
Fabric : Organza Silk





ಗೌಡೆ ಡಾಂಗೊಲೆಡಂಗ  
ವೆಪುನಾಲಿಂ ರಿವೆಡೆ



The Red Maroon Organza Silk Saree is a canvas where classic and modern artistry coalesce. Vintage motifs seamlessly evolve into the language of today.



43408  
Fabric: Organza Silk

## इहएएएए टोबॉल्ट ग्राएए

This Blue abode, a timeless legacy embraces modern vision. Classic motifs dance with contemporary flair, wrapping a woman in an artful portrayal of elegance and timeless relevance.



43407  
Fabric : Kanjivaram Two Tone Silk



## लौकिक श्रुति in वेदज्ञान weave

Adorned in this creation, she becomes a canvas of beauty, radiating a charisma that blends the warmth of light purple with the allure of emotions, creating a unique womanhood.



43413  
Fabric: Organza Silk



ಗೊಡ್ಡ ಸ್ವಾಭಾವಿಕತೆಗೆ ಇನ್ನೊಂದು ವರ್ಷ

Adorned in this creation, she becomes a canvas of beauty, radiating a charisma that blends the warmth of light purple with the allure of emotions, creating a unique womanhood



43413  
Fabric: Organza Silk



## इतनी प्यारी राख

With this yellow graceful saree, radiance takes center stage. This luminous hue embodies the essence of joy and positivity, casting a woman in a golden glow.



43412  
Fabric : Tussar Silk



**शौरांत वेपठ झुवट्ट**

When yellow meets charming red aura, a symphony of colors unfolds. The fusion of these vibrant hues creates timelessness amid innovation that mirrors a woman's vivacious personality.

© 2018 Saurant Wept Zuvatt. All rights reserved. Design: Saurant Wept Zuvatt. Photo: Saurant Wept Zuvatt.





### kanjivaramal इटालेट दोदकुण्टे

This beautiful saree in Kanjivaram Silk travels emotional depth within a woman. Every fold weaves a narrative of emotional allure, embodying a living testament to the depth of her emotional beauty.



43411

Fabric - Kanjivaram Two Tone Silk



**traditional indigo charol**

In the realm of the Blue Silk Saree, femininity blossoms boldly. With every graceful fold, a story of tenacity is spun, honouring the essence of her resilience.



43410  
Fabric : Tusser Silk





## પિહોતઠ ઠી ઠોપણ્ઠેઠ ઠઠઠે ઠઠોપઠઠ

The grace of Mixed Golden Yellow and Light Blue, transcends a woman into a tapestry of exquisite beauty.

43416  
Fabric : Tusser Satin Silk



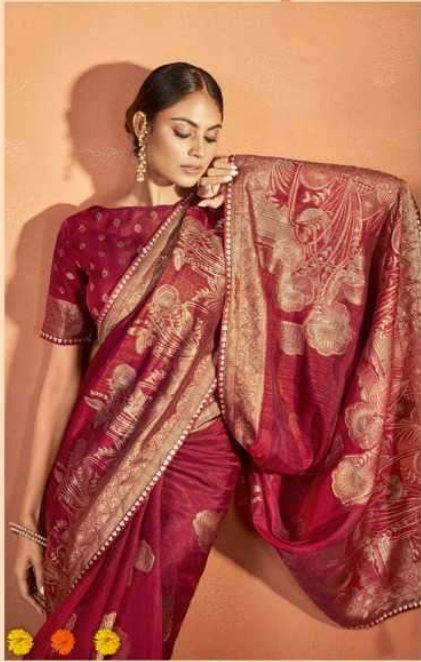
## fusion of thought and colour

The fusion of these vibrant hues illuminates her presence with a unique radiance. The union of these enchanting colors paints her in a vibrant light.



43416

Fabric: Fusser Saffin Silk



### તિલોલેટ્ટે રહે ડૉલ્કે ફારદે વેદેંગ

Within the aura of this traditional red saree, a woman's beauty blossoms with timeless elegance. Each drape embodies passion and grace, capturing the beauty, and making her radiant, inside and out.



43415

Fabric : Kanjivaram Two-Tone Silk

# પરવરના ભાઈ ટોલકાઈનાં કાદાં

With every fold, a statement is woven, embracing the power of her essence. The marriage of past with the present symbolizes the harmonious blend of heritage and modern allure.





43414  
Fabric : Tussar Silk

### ପଠ୍ୟବେଦର ଖିଲି ଚଢ଼େଇବାଲି ଖୁସି

The light blue colour, echoing the past's wisdom within contemporary threads, makes this saree a masterpiece, as she incarnates the elegant fusion of tradition and modernity.