



SAYURI<sup>®</sup>  
Designer

*Bunaai*







  
SAYURI®  
Designer  
*Bunaai*



SAYURI<sup>®</sup>  
Designer

*Bunaai*

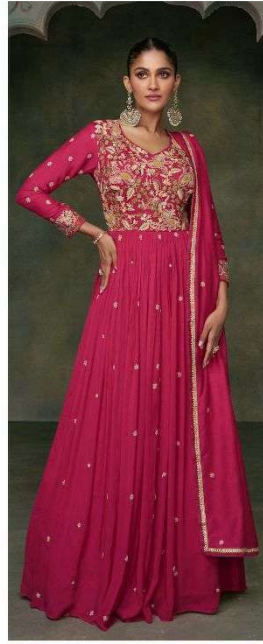




5326

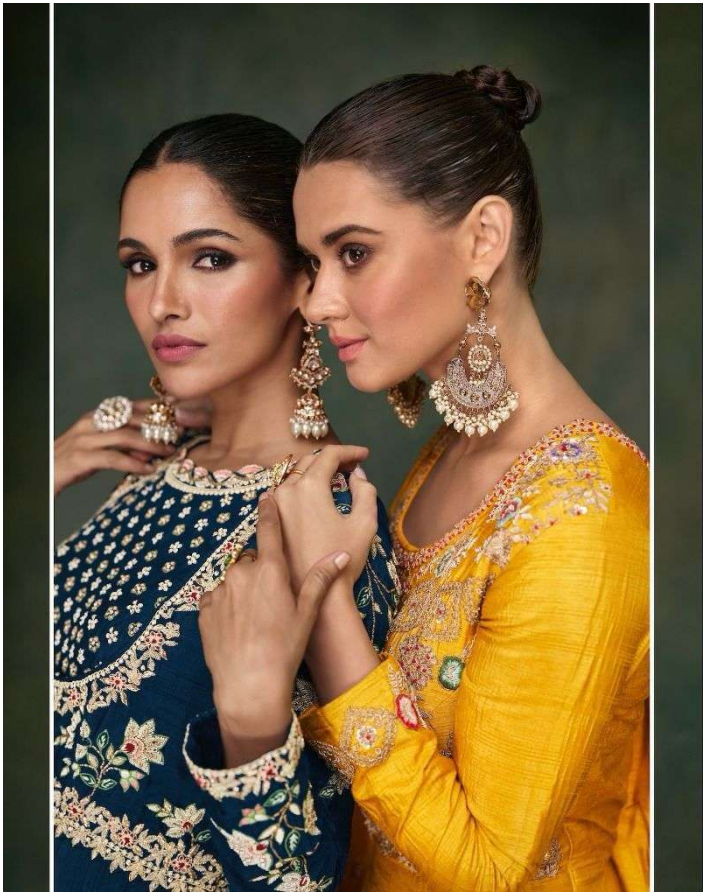


5327

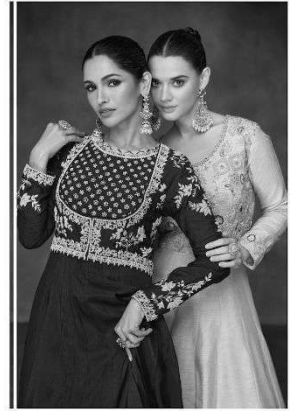


5328

  
SAYURI<sup>®</sup>  
—Designer—  
*Bunaai*

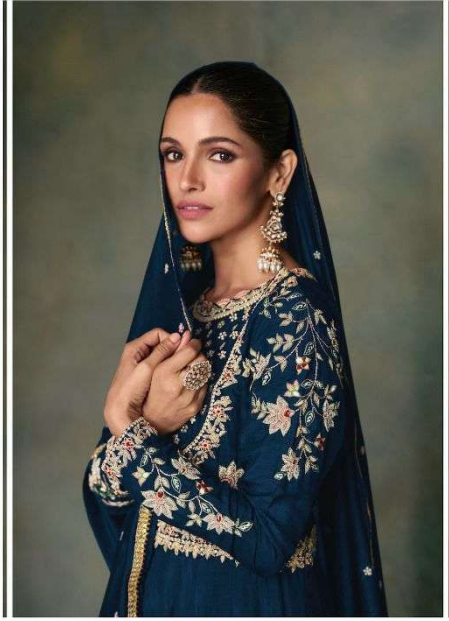


SAYURI®  
Designer



*The key is to contrast two elements so you don't end up over-  
doing the feminine quotient*

SAYURI<sup>®</sup>  
— Designer



5326



SAYURI®  
Designer



5327







5326

